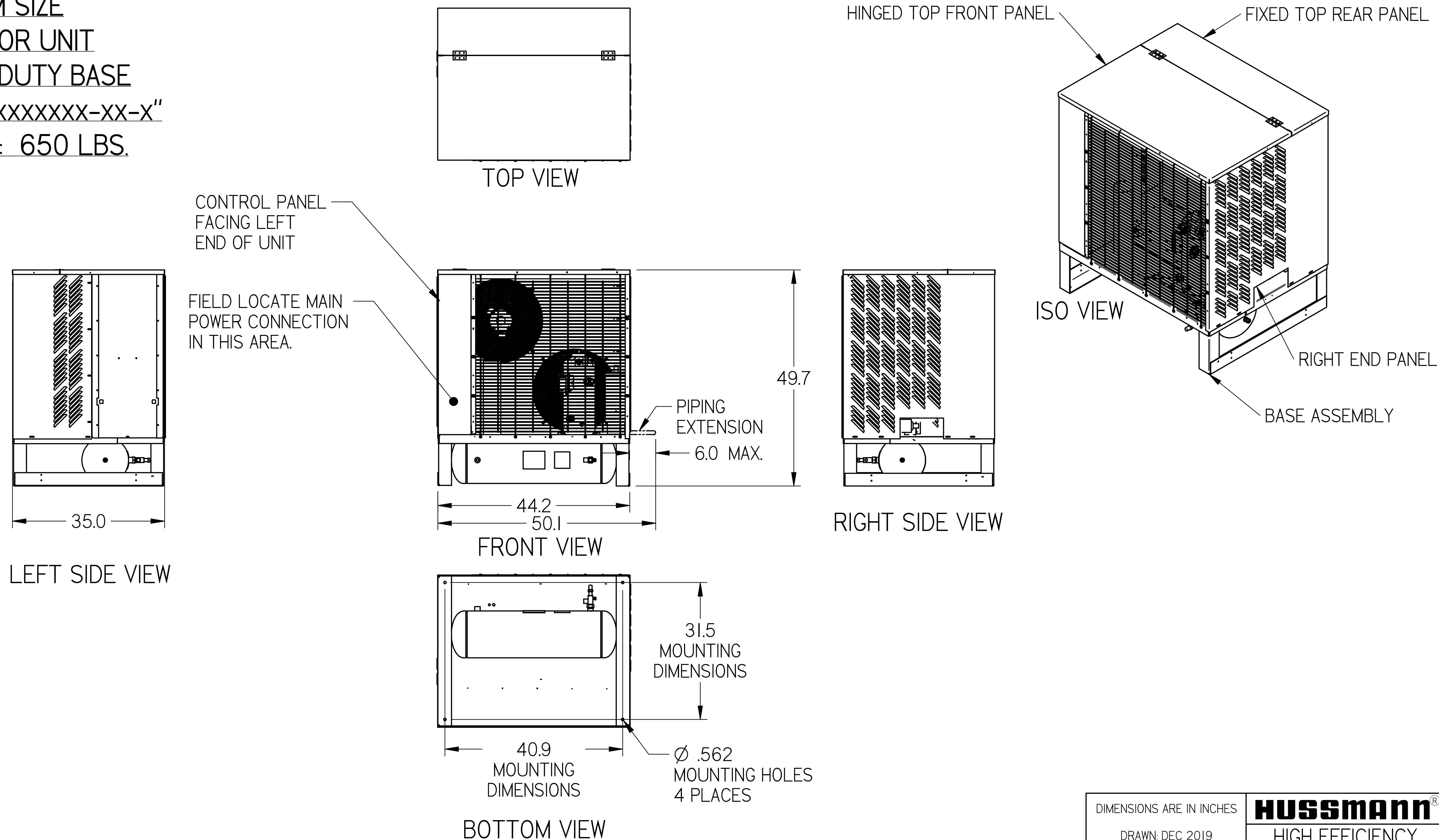
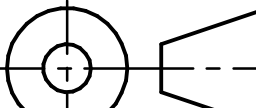


HIGH EFFICIENCY
H-SERIES
MEDIUM SIZE
OUTDOOR UNIT
HEAVY DUTY BASE
"HxHx-xxxxxxx-xx-x"
WEIGHT: 650 LBS.

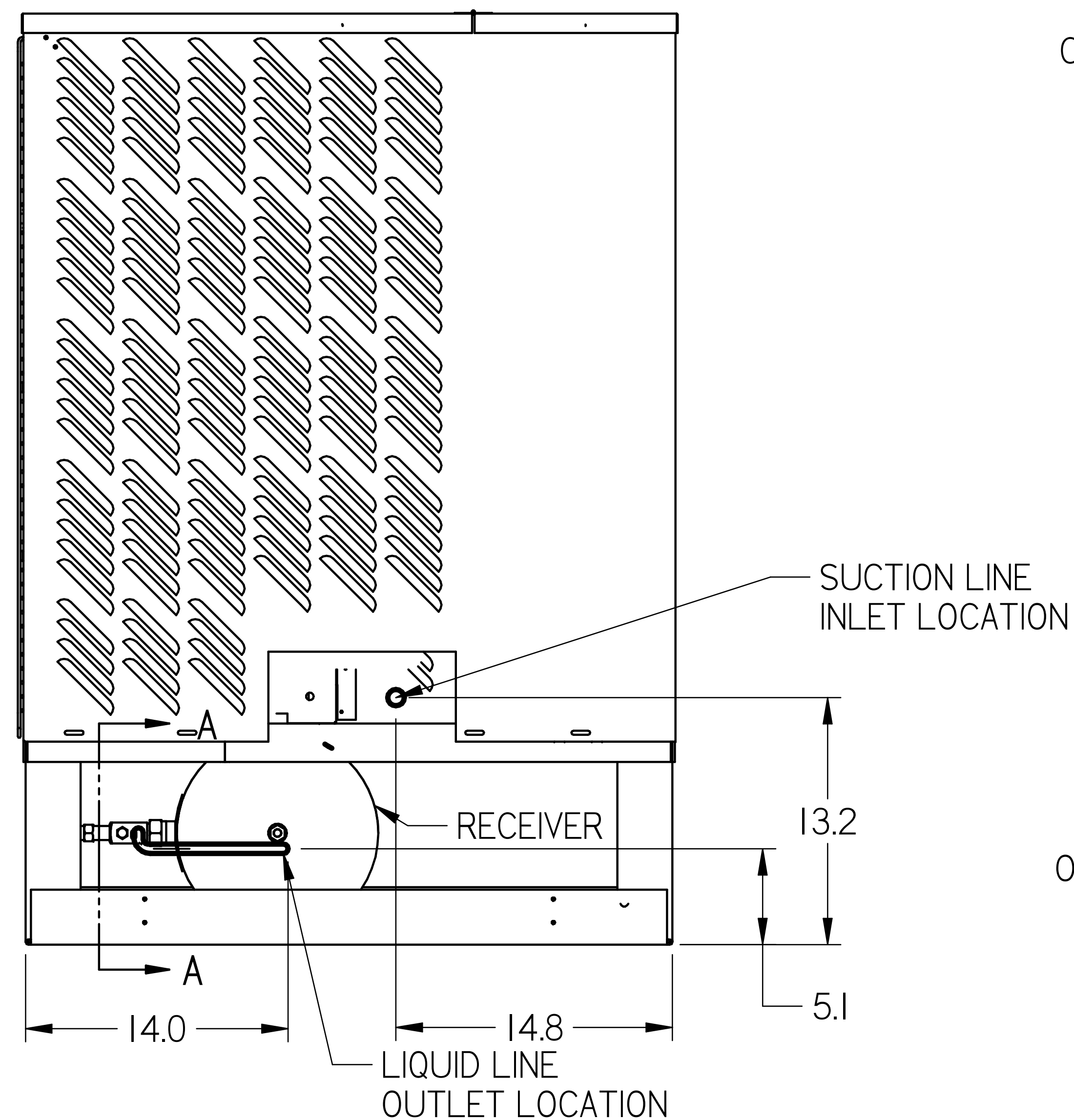


- NOTES:
1. IT IS THE RESPONSIBILITY OF THE INSTALLING CONTRACTOR TO ENSURE THAT THE FINAL EQUIPMENT INSTALLATION MEETS ALL APPLICABLE CODE REQUIREMENTS.
 2. ILLUSTRATION SHOWN IS FOR GENERAL REPRESENTATION ONLY. ACTUAL PRODUCT WILL VARY DEPENDENT UPON APPLICATION.
 3. OVERALL DIMENSIONS: 50.1 L X 35.0 W X 49.7 H.

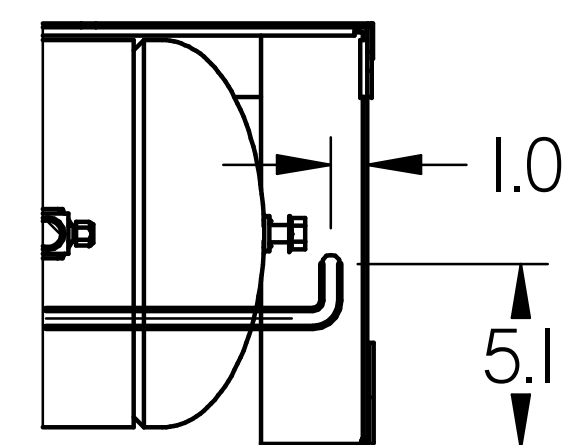
INFORMATION SUBJECT TO CHANGE

DIMENSIONS ARE IN INCHES		HUSSmann®	
DRAWN: DEC 2019		HIGH EFFICIENCY H-SERIES MEDIUM OUTDOOR HD BASE	
	THIRD ANGLE PROJECTION	DOC	REV
SHEET 1 OF 3		PD-000000018	E

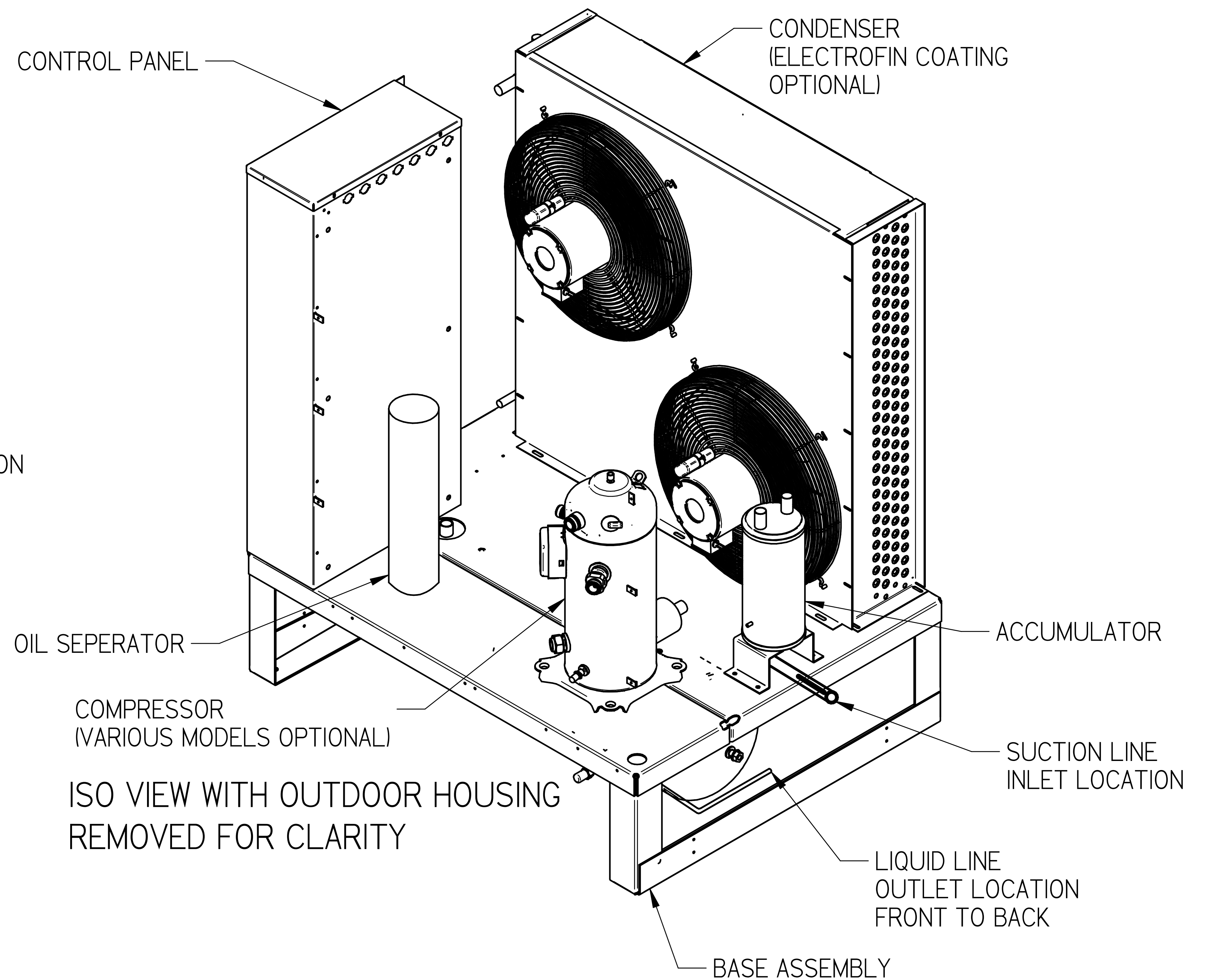
SWN 1.0 SUBMITTAL SHEET SIZE D



PIPING CONNECTION LOCATION
OUT RIGHT SIDE OF UNIT



SECTION A-A



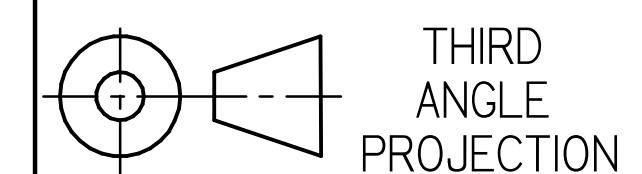
NOTES:

1. IT IS THE RESPONSIBILITY OF THE INSTALLING CONTRACTOR TO ENSURE THAT THE FINAL EQUIPMENT INSTALLATION MEETS ALL APPLICABLE CODE REQUIREMENTS.
2. ILLUSTRATION SHOWN IS FOR GENERAL REPRESENTATION ONLY. ACTUAL PRODUCT WILL VARY DEPENDENT UPON APPLICATION.
3. OVERALL DIMENSIONS: 50.1 L X 35.0 W X 49.7 H.

INFORMATION SUBJECT TO CHANGE

DIMENSIONS ARE IN INCHES

DRAWN: DEC 2019



SHEET 2 OF 3

HUSSmann®

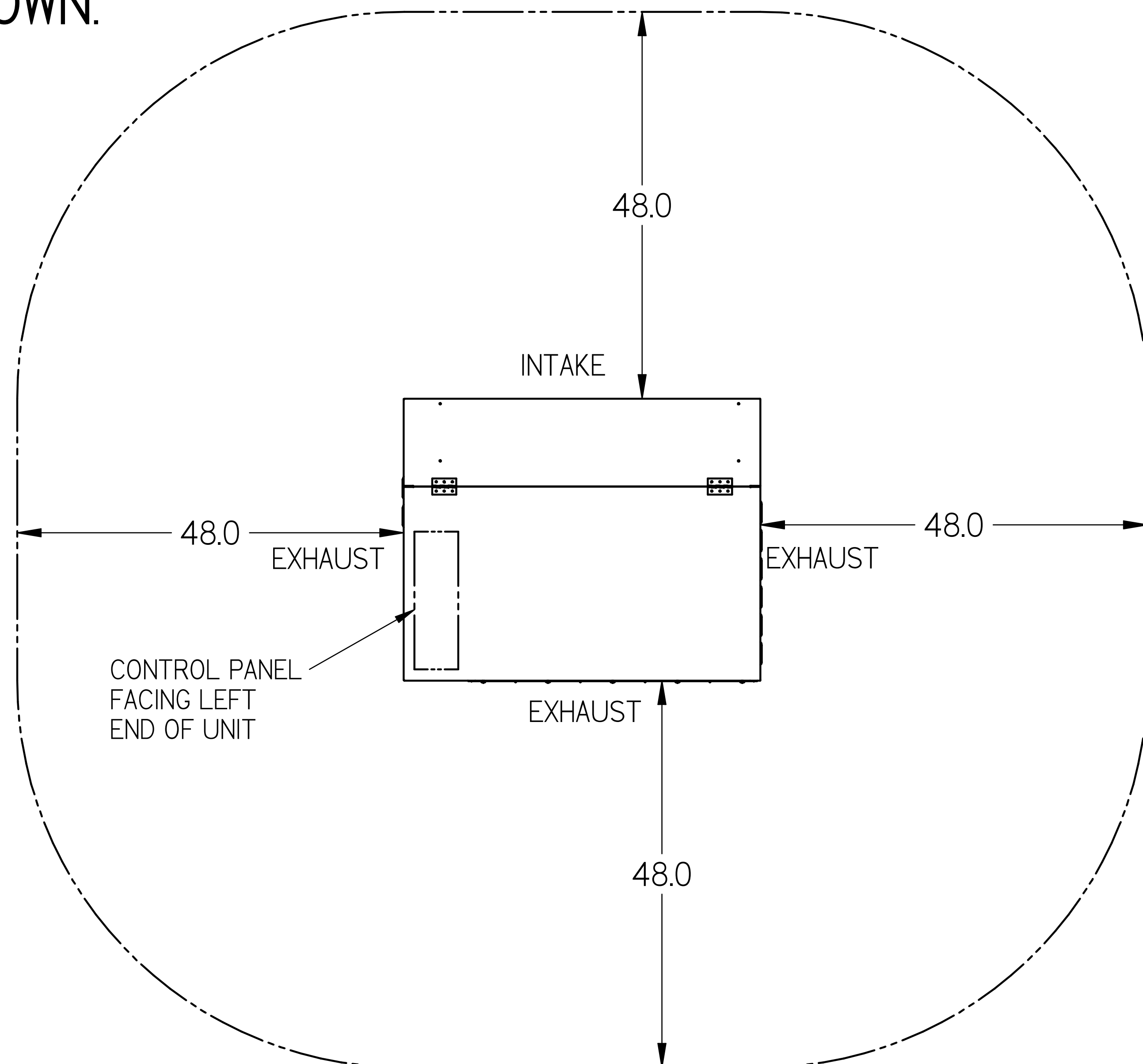
HIGH EFFICIENCY
H-SERIES MEDIUM
OUTDOOR HD BASE

DOC PD-000000018 REV E

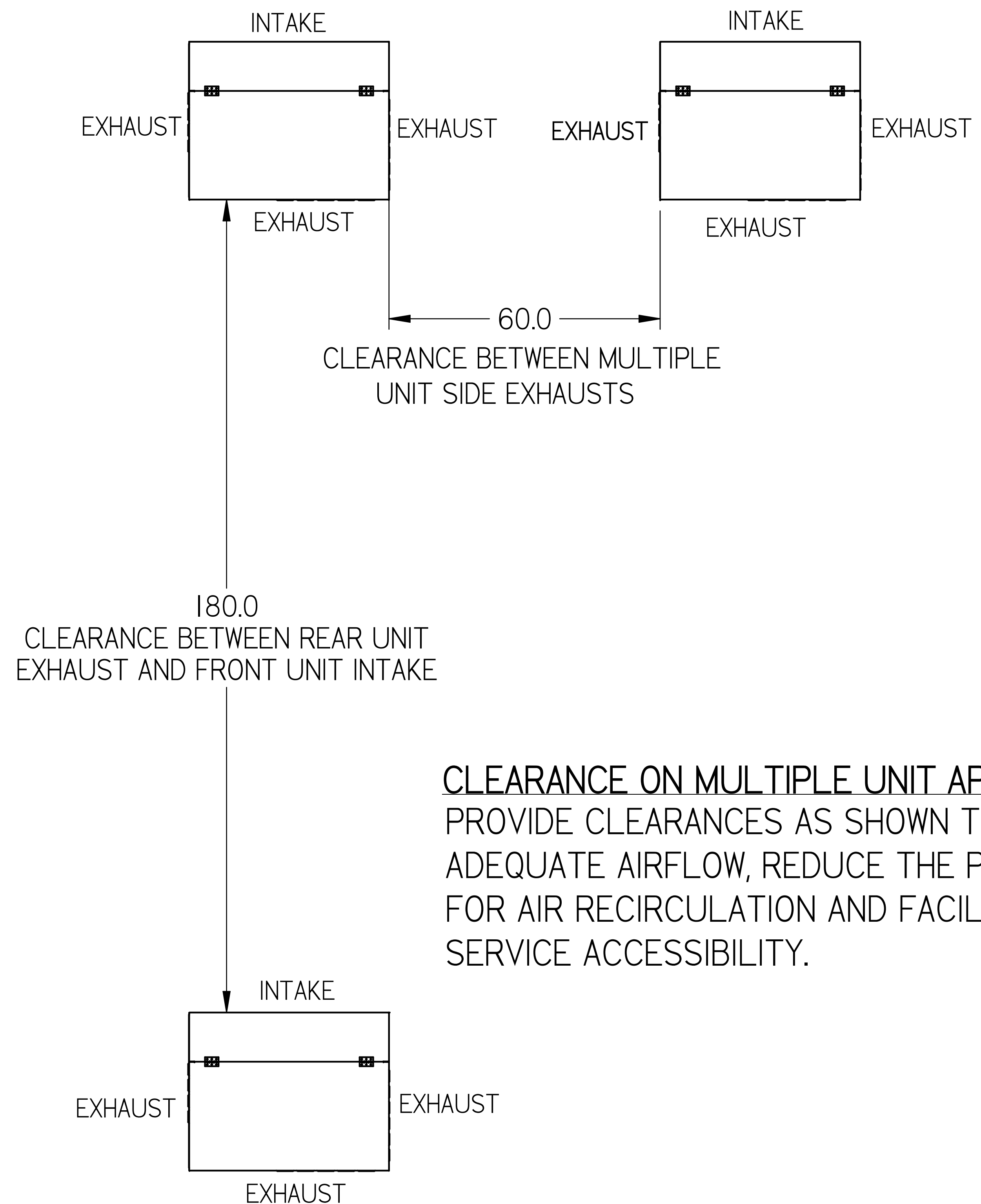
SWN 1.0 SUBMITTAL SHEET SIZE D

MINIMUM CLEARANCE REQUIREMENTS:

ACTUAL CLEARANCE REQUIREMENTS ARE DEPENDENT UPON AUTHORITY HAVING JURISDICTION, AND MAY EXCEED DIMENSIONS SHOWN.



CLEARANCE ON A SINGLE UNIT APPLICATION




CLEARANCE ON MULTIPLE UNIT APPLICATION
PROVIDE CLEARANCES AS SHOWN TO ENSURE ADEQUATE AIRFLOW, REDUCE THE POTENTIAL FOR AIR RECIRCULATION AND FACILITATE SERVICE ACCESSIBILITY.

NOTES:

1. IT IS THE RESPONSIBILITY OF THE INSTALLING CONTRACTOR TO ENSURE THAT THE FINAL EQUIPMENT INSTALLATION MEETS ALL APPLICABLE CODE REQUIREMENTS.
2. ILLUSTRATION SHOWN IS FOR GENERAL REPRESENTATION ONLY. ACTUAL PRODUCT WILL VARY DEPENDENT UPON APPLICATION.
3. OVERALL DIMENSIONS: 50.1 L X 35.0 W X 49.7 H.

INFORMATION SUBJECT TO CHANGE

DIMENSIONS ARE IN INCHES		HUSSmann®	
DRAWN: DEC 2019		HIGH EFFICIENCY H-SERIES MEDIUM OUTDOOR HD BASE	
	THIRD ANGLE PROJECTION	DOC	REV
		PD-000000018	E
SHEET 3 OF 3			

SWN 1.0 SUBMITTAL SHEET SIZE D