



DOE / NRCan Model Information Inside

KR Series

COMPACT UNIT COOLERS

Dataheet: 3240703 Rev. A



Products that provide lasting solutions.

KR Series Compact Unit Coolers

DOE Evaporator Compliant Matrix

	KR	
	DUAL SPEED MOTORS	VARIABLE SPEED MOTORS
DEFROST TYPE		
Air		
Glide Refrigerants*	X	X
Non-Glide Refrigerants (Including CO2)**	X	X
Electric		
Glide Refrigerants*		
Coolers	X	X
Freezers	X	X
Non-Glide Refrigerants (Including CO2)**		
Coolers	-	X
Freezers	-	X
Gas		
Glide Refrigerants*		
Coolers	X	X
Freezers	X	X
Non-Glide Refrigerants (Including CO2)**		
Coolers	-	X
Freezers	-	X
MOTOR VOLTAGES / PHASE (All 60 HZ)		
115/1	X	X
208-230/1	X	X
208-230/3	X	X
460/1	-	-
460/3	-	-
575/3	-	-

X - Available

* Glide Refrigerants (R-407A, R-407F, R-448A, R-449A, refer to I/O Manual for Others). Models in tables with '*' are not tied to this note.

** Non-Glide Refrigerants (R-404A, R-507A, refer to I/O Manual for Others)



DOE / NRCan -

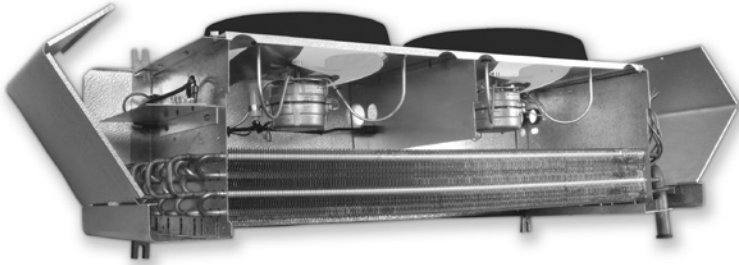
The KR Series is constructed for ease of maintenance with testing and options to meet efficiency required by DOE and NRCan regulations.



CO₂ products defined as "standard pressure" are rated for use up to 640 PSI (44.1 bar).
CO₂ products defined as "high pressure" are rated for use up to 1,305 PSI (90 bar).

KR Series Compact Unit Coolers

*Provides Excellent Design Innovations
That Enhance Overall Refrigeration Performance*



The KR Compact Unit Cooler is specifically designed with a low silhouette that fits flush to the ceiling utilizing less than 15 inches of headroom. This design gives you more usable storage space for every walk-in application.

Standard Features

- Swept Wing Fan Blade Design for quieter operation.
- Non-metallic fan guard eliminates possibility for corrosion.
- Front access to refrigeration components for easy service.
- Electrical panel with hinged cover for easy access to electrical wiring.
- Standard EC motors are dual speed 1/15 horsepower and multi-voltage operating on 100-240/1/50-60 power.
- Die-formed patterned aluminum cabinet and drain pan with easy-to-clean radius corners.
- Coil constructed of heavy-wall copper tube and rippled full collar aluminum fins.
- Optimized circuiting based on refrigerant type.
- Sealed and pressurized from the factory.
- Factory-wired fans and defrost controls to convenient terminal strips for field connections.
- Plug in motor leads for quick positive connection to wiring harness.

Optional Features and Accessories

- Electric defrost models with efficient coil face mounted heaters, drain pan heaters and adjustable defrost termination.
- Hot gas defrost models available with gas or electric pan heat.
- Coils circuited for CO₂ or fluids operating as a secondary coolant.
- Variable Speed EC fan motors requiring a 0-10 V signal for operation from full to half speed.
- Installed mechanical or electronic expansion valves.
- Installed liquid line solenoid valve.
- Painted white or black housing and drain pans to match cooler.
- Stainless-steel housing and drain pans in place of aluminum.
- Insulated drain pan to prevent drips from condensation.
- Copper fins or coil coating from Electrofin or Heresite.
- Wire fan guard.

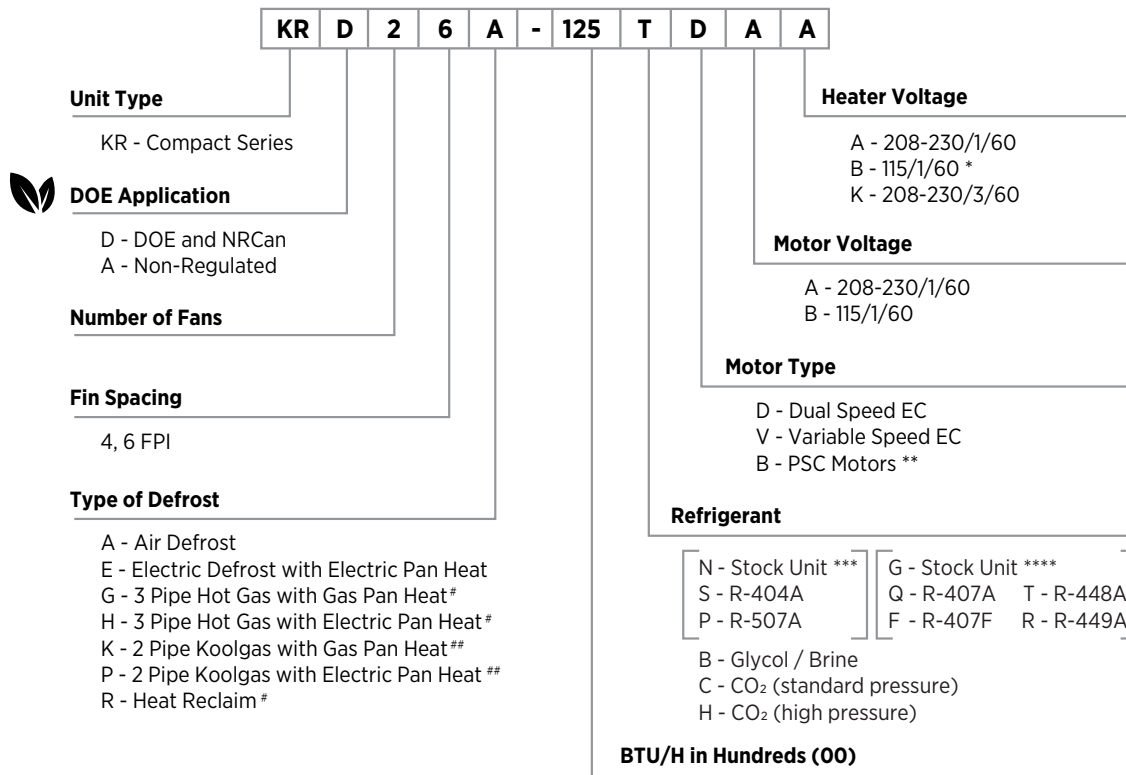
Ordering Information

(Specify when ordering all models)

- Complete model number including refrigerant
- Room temperature
- Saturated suction temperature
- Liquid refrigerant temperature
- Optional features
- Optional accessories

KR Series Compact Unit Coolers

Model Key



The KR Low Profile Evaporators are certified under NOM-012-ENER-2019 Standard: Energy efficiency of condenser and evaporator units for refrigeration application in Mexico.

- * Available on pan heaters for "H" and "P" defrost options only.
- ** PSC motors are not allowed in USA or Canada for any evaporator solution and few selected models in Mexico (check with your sales representative for the models).
- *** 'N' Stock Units are for non-glide or glide refrigerants (consult I/O manual for complete refrigerant listing).
- **** 'G' Stock Units are for glide refrigerants only (consult I/O manual for complete refrigerant listing).
- # G, H, R defrost types not available for CO₂ (C or H) refrigerant.
- ## K, P defrost types not available for C refrigerant, H refrigerant will be available soon.



DOE / NRCan -

Indicates evaporator models that have an AWEF rating published which meets the efficiency requirements of the US Department of Energy and Natural Resources Canada regulations. These specific regulations are for evaporators manufactured after July 10th, 2020, applied in refrigerated spaces 3000 square feet or less, and held at 55° F room temperature or colder. Not covered in this regulation are unit coolers using secondary refrigerant like glycol.

Hussmann / Krack will ship DOE / NRCan compliant evaporator coil units for regulated / covered applications to meet and adhere with government labeling requirements. **Please note that compliance is at the time of manufacture and responsibility of the OEM.**

The DOE / NRCan compliant evaporators will utilize Dual Speed or Variable Speed EC motors. Controls for these options may be factory installed or field supplied.

Both the Dual Speed and Variable Speed EC motors have default prevention programming. In the event of a control loss input (OV), the motors will run at full speed.

KR Series Compact Unit Coolers

Air Defrost Low Profile

MODEL	Cooler AWEF By Refrigerant and Motor				CAPACITY (BTU/H) @ 10° F TD +25° F EVAP	AIR FLOW (CFM)	REFRIGERATION CONNECTIONS		HANGERS	REF CHARGE (LBS)	DIMENSIONS (IN)			SHIP WGT (LBS)
	[G] Stock Unit**, [Q] R-407A, [F] R-407F, [T] R-448A, [R] R-449A		[N] Stock Unit***, [S] R-404A, [P] R-507A				LIQ	SUCT			L	W	H	
	{D}ual Speed	{V}ariable Speed	{D}ual Speed	{V}ariable Speed										
KR*16A-040[]{ }	9.00	9.00	9.00	9.00	4,000	845	1/2"	5/8"	4	1	29.13	15.32	15.90	55
KR*16A-060[]{ }	9.00	9.00	9.00	9.00	6,000	845	1/2"	5/8"	4	1	29.13	15.32	15.90	60
KR*26A-089[]{ }	9.00	9.00	9.00	9.00	8,900	1,690	1/2"	7/8"	4	2	47.13	15.32	15.90	100
KR*26A-125[]{ }	9.00	9.00	9.00	9.00	12,500	1,690	1/2"	7/8"	4	2	47.13	15.32	15.90	100
KR*36A-134[]{ }	9.00	9.00	9.00	9.00	13,400	2,535	1/2"	7/8"	4	3	65.13	15.32	15.90	120
KR*36A-170[]{ }	9.00	9.00	9.00	9.00	17,000	2,535	1/2"	1-1/8"	4	3	65.13	15.32	15.90	140
KR*46A-216[]{ }	9.00	9.00	9.00	9.00	21,600	3,380	1/2"	1-1/8"	6	3	83.13	15.32	15.90	180
KR*56A-242[]{ }	9.00	9.00	9.00	9.00	24,200	4,225	1/2"	1-1/8"	6	4	101.13	15.32	15.90	220
KR*66A-340[]{ }	9.00	9.00	9.00	9.00	34,000	5,070	1/2"	1-3/8"	6	5	119.13	15.32	15.90	265
KR*14A-058[]{ }	9.00	9.00	9.00	9.00	5,800	855	1/2"	5/8"	4	1	29.13	15.32	15.90	60
KR*24A-096[]{ }	9.00	9.00	9.00	9.00	9,600	1,750	1/2"	7/8"	4	2	47.13	15.32	15.90	90
KR*24A-117[]{ }	9.00	9.00	9.00	9.00	11,700	1,710	1/2"	7/8"	4	2	47.13	15.32	15.90	100
KR*34A-143[]{ }	9.00	9.00	9.00	9.00	14,300	2,625	1/2"	7/8"	4	3	65.13	15.32	15.90	125
KR*34A-173[]{ }	9.00	9.00	9.00	9.00	17,300	2,565	1/2"	1-1/8"	4	3	65.13	15.32	15.90	140
KR*44A-191[]{ }	9.00	9.00	9.00	9.00	19,100	3,500	1/2"	1-1/8"	6	3	83.13	15.32	15.90	165
KR*44A-232[]{ }	9.00	9.00	9.00	9.00	23,200	3,420	1/2"	1-1/8"	6	3	83.13	15.32	15.90	180
KR*54A-290[]{ }	9.00	9.00	9.00	9.00	29,000	4,275	1/2"	1-1/8"	6	4	101.13	15.32	15.90	225
KR*64A-348[]{ }	9.00	9.00	9.00	9.00	34,800	5,130	1/2"	1-1/8"	6	5	119.13	15.32	15.90	265

* All air defrost are DOE / NRCan compliant when applied with "D" for Dual Speed or "V" for Variable Speed EC motor codes and any HFC / HFO refrigerant.
[] Location for the refrigerant letter code. { } Include motor code as either "D" for Dual Speed or "V" for Variable Speed EC motor to be used.

** G Stock Units are for glide refrigerants only (consult I/O manual for complete refrigerant listing).

*** N Stock Units are for non-glide or glide refrigerants (consult I/O manual for complete refrigerant listing).

EXAMPLE FULL MODEL:

KRD16A-040SDA is DOE / NRCan with R-404A, Dual Speed EC motor and includes the additional letter A for 208 V single phase fan power.

Key Point -

Krack evaporator capacities shown are with **midpoint** evaporating temperature to offer a consistent capacity for selection when using different refrigerants and match other Krack and Hussmann equipment.

KR Series Compact Unit Coolers

Electric Defrost Low Profile

MODEL	AWEF by Refrigerant, Motor, and Application								CAPACITY (BTU/H) @ 10° F TD -20° F EVAP	CAPACITY (BTU/H) @ 10° F TD +20° F EVAP	AIR FLOW (CFM)	REFRIGERATION CONNECTIONS		HANGERS	REF CHARGE (LBS)	DIMENSIONS (IN)			SHIP WGT (LBS)
	[G] Stock Unit**, [Q] R-407A, [F] R-407F, [T] R-448A, [R] R-449A				[N] Stock Unit***, [S] R-404A, [P] R-507A							LIQ	SUCT			L	W	H	
	{D}ual Speed		{V}ariable Speed		{D}ual Speed		{V}ariable Speed												
	Freezer	Cooler	Freezer	Cooler	Freezer	Cooler	Freezer	Cooler											
KR*14E-037[] { }	4.15	9.00	4.15	9.00	NA	NA	4.15	9.00	3,700	5,000	875	1/2"	5/8"	4	1	29.13	15.32	15.90	55
KR*24E-074[] { }	4.15	9.00	4.15	9.00	NA	NA	4.15	9.00	7,400	9,990	1,750	1/2"	7/8"	4	2	47.13	15.32	15.90	90
KR*34E-111[] { }	4.15	9.00	4.15	9.00	NA	NA	4.15	9.00	11,100	14,990	2,625	1/2"	7/8"	4	3	65.13	15.32	15.90	125
KR*44E-148[] { }	4.15	9.00	4.15	9.00	NA	NA	4.15	9.00	14,800	19,850	3,500	1/2"	1-1/8"	6	3	83.13	15.32	15.90	165
KR*54E-185[] { }	4.15	9.00	4.15	9.00	NA	NA	4.15	9.00	18,500	24,980	4,375	1/2"	1-1/8"	6	4	101.10	15.32	15.90	200
KR*64E-220[] { }	4.15	9.00	4.15	9.00	NA	NA	4.15	9.00	22,000	29,700	5,250	1/2"	1-1/8"	6	5	119.10	15.32	15.90	240
KR*16E-035[] { }	4.15	9.00	4.15	9.00	NA	NA	4.15	9.00	3,500	4,730	845	1/2"	5/8"	4	1	29.13	15.32	15.90	55
KR*16E-045[] { }	4.15	9.00	4.15	9.00	NA	NA	4.15	9.00	4,500	6,080	845	1/2"	5/8"	4	1	29.13	15.32	15.90	60
KR*26E-090[] { }	4.15	9.00	4.15	9.00	NA	NA	4.15	9.00	9,000	12,150	1,690	1/2"	7/8"	4	2	47.13	15.32	15.90	100
KR*36E-135[] { }	4.15	9.00	4.15	9.00	NA	NA	4.15	9.00	13,500	18,230	2,535	1/2"	7/8"	4	3	65.13	15.32	15.90	140
KR*46E-180[] { }	4.15	9.00	4.15	9.00	NA	NA	4.15	9.00	18,000	24,300	3,380	1/2"	1-1/8"	6	4	83.13	15.32	15.90	180
KR*56E-192[] { }	4.15	9.00	4.15	9.00	NA	NA	4.15	9.00	19,200	25,920	4,225	1/2"	1-1/8"	6	4	101.10	15.32	15.90	220
KR*66E-270[] { }	4.15	9.00	4.15	9.00	NA	NA	4.15	9.00	27,000	36,450	5,070	1/2"	1-1/8"	6	5	119.10	15.32	15.90	265

* For motor code and refrigerant, use "D" when AWEF rating is shown and "A" for non-regulated applications or where AWEF is NA.
 De-rate capacity 12% for 50 Hertz operation with 3 phase motors only. [] Location for the refrigerant letter code.
 { } Include motor code as either "D" for Dual Speed or "V" for Variable Speed EC motor to be used.

** G Stock Units are for glide refrigerants only (consult I/O manual for complete refrigerant listing).

*** N Stock Units are for non-glide or glide refrigerants (consult I/O manual for complete refrigerant listing).

EXAMPLE FULL MODEL:

KRD16E-0350DAA is DOE / NRCan with R-407A, Dual Speed EC motor and includes the additional letters AA for 208 V single phase power.

Hot Gas Defrost Low Profile

MODEL	AWEF by Refrigerant, Motor, and Application								CAPACITY (BTU/H) @ 10° F TD -20° F EVAP	CAPACITY (BTU/H) @ 10° F TD +20° F EVAP	AIR FLOW (CFM)	REFRIGERATION CONNECTIONS			HANGERS	REF CHARGE (LBS)	DIMENSIONS (IN)			SHIP WGT (LBS)
	[G] Stock Unit**, [Q] R-407A, [F] R-407F, [T] R-448A, [R] R-449A				[N] Stock Unit***, [S] R-404A, [P] R-507A							LIQ	SUCT	HOT GAS			L	W	H	
	{D}ual Speed		{V}ariable Speed		{D}ual Speed		{V}ariable Speed													
	Freezer	Cooler	Freezer	Cooler	Freezer	Cooler	Freezer	Cooler												
KR*14(-)037[] { }	4.15	9.00	4.15	9.00	NA	NA	4.15	9.00	3,700	5,000	875	1/2"	5/8"	1/2"	4	1	29.13	15.32	15.90	55
KR*24(-)074[] { }	4.15	9.00	4.15	9.00	NA	NA	4.15	9.00	7,400	9,990	1,750	1/2"	7/8"	1/2"	4	2	47.13	15.32	15.90	90
KR*34(-)111[] { }	4.15	9.00	4.15	9.00	NA	NA	4.15	9.00	11,100	14,990	2,625	1/2"	7/8"	1/2"	4	3	65.13	15.32	15.90	125
KR*44(-)148[] { }	4.15	9.00	4.15	9.00	NA	NA	4.15	9.00	14,800	19,850	3,500	1/2"	1-1/8"	1/2"	6	3	83.13	15.32	15.90	165
KR*54(-)185[] { }	4.15	9.00	4.15	9.00	NA	NA	4.15	9.00	18,500	24,980	4,375	1/2"	1-1/8"	1/2"	6	4	101.10	15.32	15.90	200
KR*64(-)220[] { }	4.15	9.00	4.15	9.00	NA	NA	4.15	9.00	22,000	29,700	5,250	1/2"	1-1/8"	1/2"	6	5	119.10	15.32	15.90	240
KR*16(-)035[] { }	4.15	9.00	4.15	9.00	NA	NA	4.15	9.00	3,500	4,730	845	1/2"	5/8"	1/2"	4	1	29.13	15.32	15.90	55
KR*16(-)045[] { }	4.15	9.00	4.15	9.00	NA	NA	4.15	9.00	4,500	6,080	845	1/2"	5/8"	1/2"	4	1	29.13	15.32	15.90	60
KR*26(-)090[] { }	4.15	9.00	4.15	9.00	NA	NA	4.15	9.00	9,000	12,150	1,690	1/2"	7/8"	1/2"	4	2	47.13	15.32	15.90	100
KR*36(-)135[] { }	4.15	9.00	4.15	9.00	NA	NA	4.15	9.00	13,500	18,230	2,535	1/2"	7/8"	1/2"	4	3	65.13	15.32	15.90	140
KR*46(-)180[] { }	4.15	9.00	4.15	9.00	NA	NA	4.15	9.00	18,000	24,300	3,380	1/2"	1-1/8"	1/2"	6	4	83.13	15.32	15.90	180
KR*56(-)192[] { }	4.15	9.00	4.15	9.00	NA	NA	4.15	9.00	19,200	25,920	4,225	1/2"	1-1/8"	1/2"	6	4	101.10	15.32	15.90	220
KR*66(-)270[] { }	4.15	9.00	4.15	9.00	NA	NA	4.15	9.00	27,000	36,450	5,070	1/2"	1-1/8"	1/2"	6	5	119.10	15.32	15.90	265

* For motor code and refrigerant, use "D" when AWEF rating is shown and "A" for non-regulated applications or where AWEF is NA.
 [] Gas defrost type K, H, G, or P. See definition to the right. [] Location for the refrigerant letter code.
 { } Include motor code as either "D" for Dual Speed or "V" for Variable Speed EC motor to be used.

** G Stock Units are for glide refrigerants only (consult I/O manual for complete refrigerant listing).

*** N Stock Units are for non-glide or glide refrigerants (consult I/O manual for complete refrigerant listing).

Available Gas Defrost Types

- (K) - 2 Pipe Kool Gas with Gas Pan
- (P) - 2 Pipe Kool Gas with Electric Pan Heat
- (G) - 3 Pipe Hot Gas with Hot Gas Pan
- (H) - 3 Pipe Hot Gas with Electric Pan Heat

EXAMPLE FULL MODEL:

KRD24K-035PVA is DOE / NRCan with R-507A, Variable Speed EC motor and includes the additional letter A for 208 V single phase fan power.

Key Point -

Krack evaporator capacities shown are with **midpoint** evaporating temperature to offer a consistent capacity for selection when using different refrigerants and match other Krack and Hussmann equipment.

KR Series Compact Unit Coolers

Air Defrost Low Profile - CO₂ Refrigerant

AIR DEFROST - CO₂

MODEL	Cooler AWEF By Refrigerant and Motor		CAPACITY (BTU/H) @ 10° F TD +25° F EVAP	AIR FLOW (CFM)	REFRIGERATION CONNECTIONS				HANGERS	REF CHARGE (LB)	DIMENSIONS (IN)			SHIP WGT (LB)	
	C - CO ₂ (standard pressure) H - CO ₂ (high pressure)				C - CO ₂ (standard pressure)		H - CO ₂ (high pressure)				L	W	H	C - CO ₂ (std)	H - CO ₂ (high)
	{D}ual Speed	{V}ariable Speed			LIQ	SUCT	LIQ	SUCT							
KRD16A-040 [] { }	9.00	9.00	4,000	845	1/2"	5/8"	3/8"	5/8"	4	0.8	29.13	15.32	15.90	55	57
KRD16A-060 [] { }	9.00	9.00	6,000	845	1/2"	5/8"	3/8"	5/8"	4	0.8	29.13	15.32	15.90	60	64
KRD26A-089 [] { }	9.00	9.00	8,900	1,690	1/2"	7/8"	3/8"	5/8"	4	1.6	47.13	15.32	15.90	100	104
KRD26A-125 [] { }	9.00	9.00	12,500	1,690	1/2"	7/8"	3/8"	5/8"	4	1.6	47.13	15.32	15.90	100	106
KRD36A-134 [] { }	9.00	9.00	13,400	2,535	1/2"	7/8"	3/8"	5/8"	4	2.4	65.13	15.32	15.90	120	126
KRD36A-170 [] { }	9.00	9.00	17,000	2,535	1/2"	1-1/8"	3/8"	5/8"	4	2.4	65.13	15.32	15.90	140	149
KRD46A-216 [] { }	9.00	9.00	21,600	3,380	1/2"	1-1/8"	3/8"	5/8"	6	2.4	83.13	15.32	15.90	180	192
KRD56A-242 [] { }	9.00	9.00	24,200	4,225	1/2"	1-1/8"	3/8"	5/8"	6	3.2	101.13	15.32	15.90	220	235
KRD66A-340 [] { }	9.00	9.00	34,000	5,070	1/2"	1-1/8"	1/2"	5/8"	6	4.0	119.13	15.32	15.90	265	283
KRD14A-058 [] { }	9.00	9.00	5,800	855	1/2"	5/8"	3/8"	5/8"	4	0.8	29.13	15.32	15.90	60	65
KRD24A-096 [] { }	9.00	9.00	9,600	1,750	1/2"	7/8"	3/8"	5/8"	4	1.6	47.13	15.32	15.90	90	96
KRD24A-117 [] { }	9.00	9.00	11,700	1,710	1/2"	7/8"	3/8"	5/8"	4	1.6	47.13	15.32	15.90	100	109
KRD34A-143 [] { }	9.00	9.00	14,300	2,625	1/2"	7/8"	3/8"	5/8"	4	2.4	65.13	15.32	15.90	125	134
KRD34A-173 [] { }	9.00	9.00	17,300	2,565	1/2"	1-1/8"	3/8"	5/8"	4	2.4	65.13	15.32	15.90	140	152
KRD44A-191 [] { }	9.00	9.00	19,100	3,500	1/2"	1-1/8"	3/8"	5/8"	6	2.4	83.13	15.32	15.90	165	177
KRD44A-232 [] { }	9.00	9.00	23,200	3,420	1/2"	1-1/8"	3/8"	5/8"	6	2.4	83.13	15.32	15.90	180	196
KRD54A-290 [] { }	9.00	9.00	29,000	4,275	1/2"	1-1/8"	3/8"	5/8"	6	3.2	101.13	15.32	15.90	225	245
KRD64A-348 [] { }	9.00	9.00	34,800	5,130	1/2"	1-1/8"	1/2"	5/8"	6	4.0	119.13	15.32	15.90	265	288

{ } Include motor code as either "D" for Dual Speed or "V" for Variable Speed EC motor to be used.

[] Location for the refrigerant letter code.

EXAMPLE FULL MODEL:

KRD16A-040CDA is DOE / NRCan with CO₂ Dual Speed EC motor and includes the additional letter A for 208 V single phase fan power.

Electric Defrost Low Profile - CO₂ Refrigerant

ELECTRIC DEFROST - CO₂

MODEL	AWEF By Refrigerant, Motor and Application				CAPACITY (BTU/H) @ 10° F TD -20° F EVAP	CAPACITY (BTU/H) @ 10° F TD +20° F EVAP	AIR FLOW (CFM)	REFRIGERATION CONNECTIONS				HANGERS	REF CHARGE (LB)	DIMENSIONS (IN)			SHIP WGT (LB)	
	C - CO ₂ (standard pressure) H - CO ₂ (high pressure)							C - CO ₂ (standard pressure)		H - CO ₂ (high pressure)				L	W	H	C - CO ₂ (std)	H - CO ₂ (high)
	Freezer	Cooler	Freezer	Cooler				LIQ	SUCT	LIQ	SUCT							
KRD14E-037 [] { }	4.15	9.00	4.15	9.00	3,700	5,000	875	1/2"	5/8"	3/8"	5/8"	4	0.8	29.13	15.32	15.90	55	59
KRD24E-074 [] { }	4.15	9.00	4.15	9.00	7,400	9,990	1,750	1/2"	7/8"	3/8"	5/8"	4	1.6	47.13	15.32	15.90	90	96
KRD34E-111 [] { }	4.15	9.00	4.15	9.00	11,100	14,990	2,625	1/2"	7/8"	3/8"	5/8"	4	2.4	65.13	15.32	15.90	125	134
KRD44E-148 [] { }	4.15	9.00	4.15	9.00	14,800	19,850	3,500	1/2"	1-1/8"	3/8"	5/8"	6	2.4	83.13	15.32	15.90	165	177
KRD54E-185 [] { }	4.15	9.00	4.15	9.00	18,500	24,980	4,375	1/2"	1-1/8"	3/8"	5/8"	6	3.2	101.13	15.32	15.90	200	215
KRD64E-220 [] { }	4.15	9.00	4.15	9.00	22,000	29,700	5,250	1/2"	1-1/8"	1/2"	5/8"	6	4	119.13	15.32	15.90	240	258
KRD16E-035 [] { }	4.15	9.00	4.15	9.00	3,500	4,730	845	1/2"	5/8"	3/8"	5/8"	4	0.8	29.13	15.32	15.90	55	57
KRD16E-045 [] { }	4.15	9.00	4.15	9.00	4,500	6,080	845	1/2"	5/8"	3/8"	5/8"	4	0.8	29.13	15.32	15.90	60	64
KRD26E-090 [] { }	4.15	9.00	4.15	9.00	9,000	12,150	1,690	1/2"	7/8"	3/8"	5/8"	4	1.6	47.13	15.32	15.90	100	106
KRD36E-135 [] { }	4.15	9.00	4.15	9.00	13,500	18,230	2,535	1/2"	7/8"	3/8"	5/8"	4	2.4	65.13	15.32	15.90	140	149
KRD46E-180 [] { }	4.15	9.00	4.15	9.00	18,000	24,300	3,380	1/2"	1-1/8"	3/8"	5/8"	6	3.2	83.13	15.32	15.90	180	192
KRD56E-192 [] { }	4.15	9.00	4.15	9.00	19,200	25,920	4,225	1/2"	1-1/8"	3/8"	5/8"	6	3.2	101.13	15.32	15.90	220	235
KRD66E-270 [] { }	4.15	9.00	4.15	9.00	27,000	36,450	5,070	1/2"	1-1/8"	1/2"	5/8"	6	4	119.13	15.32	15.90	265	283

{ } Include motor code as either "D" for Dual Speed or "V" for Variable Speed EC motor to be used.

[] Location for the refrigerant letter code.

EXAMPLE FULL MODEL:

KRD16E-035CDA is DOE / NRCan with CO₂ Dual Speed EC motor and includes the additional letters AA for 208 V single phase power.



Krack evaporator capacities shown are with **midpoint** evaporating temperature to offer a consistent capacity for selection when using different refrigerants and match other Krack and Hussmann equipment.

KR Series Compact Unit Coolers

KR Fan Motor Data

MODEL	DUAL OR VARIABLE SPEED EC MOTORS				PSC MOTORS			
	115/1/60		208-230/1/60		115/1/60		208-230/1/60	
	AMPS	WATTS	AMPS	WATTS	AMPS	WATTS	AMPS	WATTS
1 FAN	0.9	46	0.6	45	0.6	64	0.3	58
2 FAN	1.8	92	1.2	90	1.2	128	0.6	116
3 FAN	2.7	138	1.8	135	1.8	192	0.9	174
4 FAN	3.6	184	2.4	180	2.4	256	1.2	232
5 FAN	4.5	230	3.0	225	3.0	320	1.5	290
6 FAN	5.4	276	3.6	270	3.6	384	1.8	348

Dual or Variable Speed EC Motors are motor codes "D" and "V". PSC motors are motor code "B". Refer to complete Model Key on page 3.

Key Point -

Dual Speed fan motors use a voltage input from the incoming fan power to a third connection on the motor to trigger low speed operation. Variable Speed EC need a 0-10 V signal with 10 V as minimum speed operation. Both motor types operate as a single speed EC motor without a control signal.

Electric Defrost Heater Data

MODEL	230/1/60		230/3/60	
	AMPS	WATTS	AMPS	WATTS
1 FAN - 037, 035, 045	4.3	1000	2.9	1000
2 FAN - 074, 090	8.7	2000	5.8	2000
3 FAN - 111, 135	13.0	3000	8.7	3000
4 FAN - 148, 180	17.4	4000	11.6	4000
5 FAN - 185, 192	21.7	5000	14.5	5000
6 FAN - 220, 270	26.1	6000	17.4	6000

Electrical information for defrost type "E". Refer to complete Model Key on page 3.

Hot Gas Defrost Drain Pan Heater Data

MODEL	115/1/60		230/1/60	
	AMPS	WATTS	AMPS	WATTS
1 FAN - 037, 035, 045	2.6	300	1.3	300
2 FAN - 074, 090	5.2	600	2.6	600
3 FAN - 111, 135	7.0	800	3.5	800
4 FAN - 148, 180	8.7	1000	4.4	1000
5 FAN - 185, 192	9.6	1100	4.8	1100
6 FAN - 220, 270	12.2	1400	6.1	1400

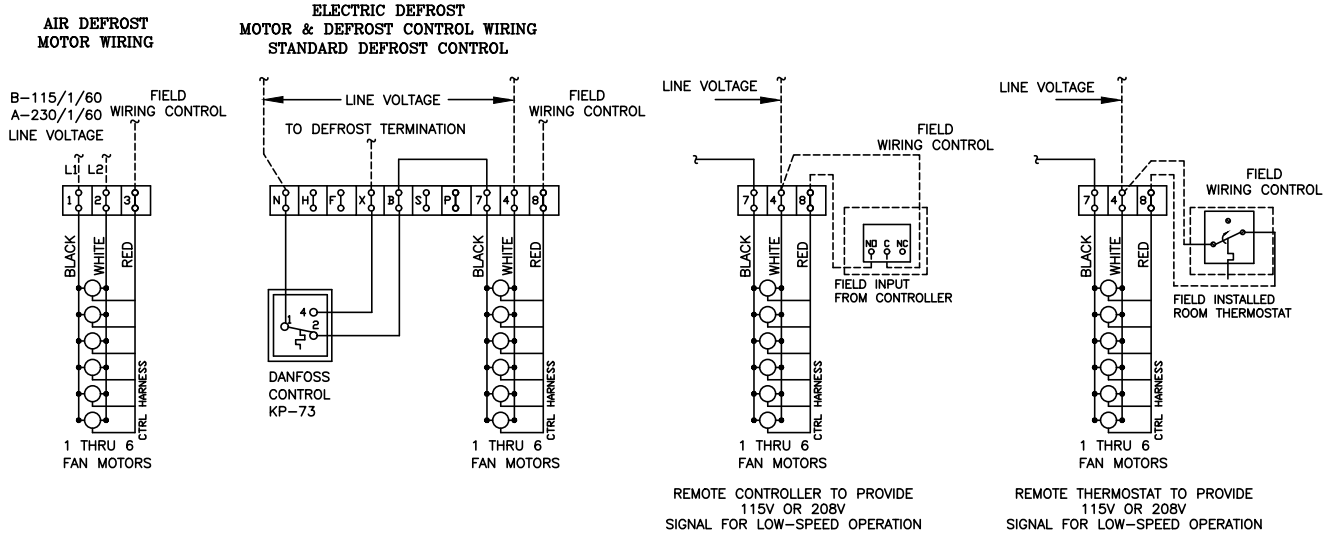
Electrical information for pan heaters on defrost type "P" or "H". Refer to complete Model Key on page 3.

KR Series Compact Unit Coolers

Wiring Diagrams

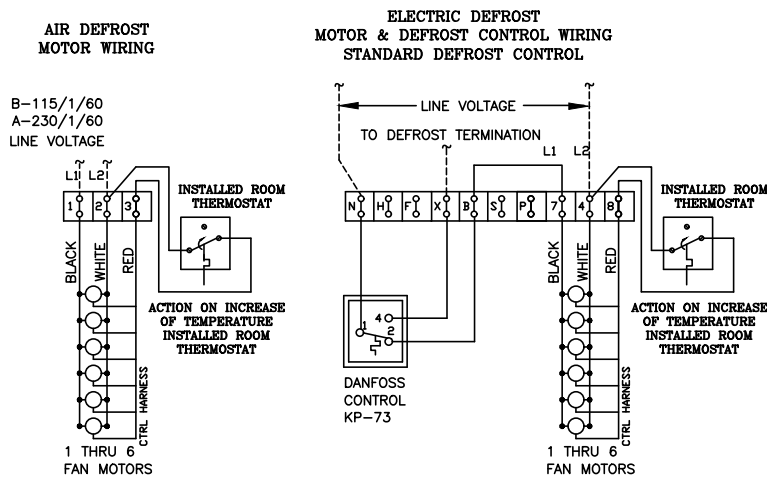
Dual Speed EC Motor Wiring - Motor Code D

Remote thermostat or controller would use incoming fan power as source for the 115 V or 208 V voltage signal for low speed operation.



Dual Speed EC Motor Wiring - Motor Code D

Factory-installed thermostat uses incoming fan power as voltage signal for low speed operation.



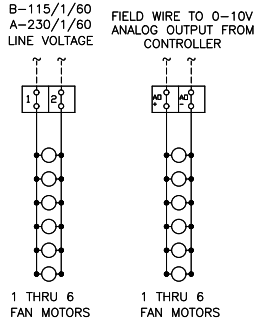
KR Series Compact Unit Coolers

Wiring Diagrams

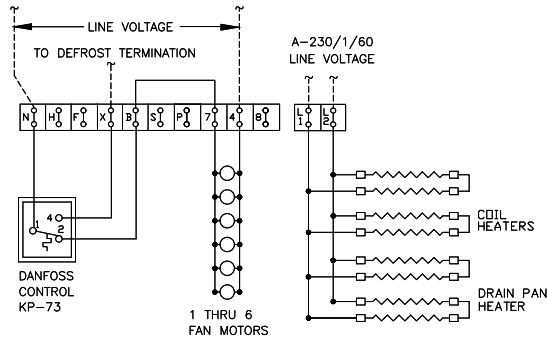
Variable Speed EC Motor Wiring - Motor Code V

Field supplied 0-10 V signal must provide 20 mA per motor or use amplifier on each evaporator. Default operation is full speed with 0V or no signal.

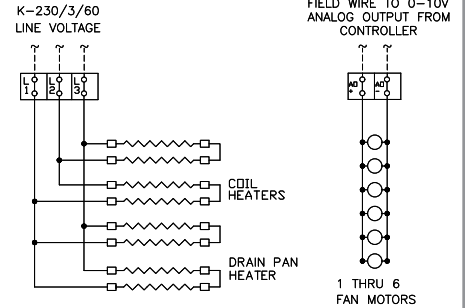
AIR DEFROST MOTOR WIRING



ELECTRIC DEFROST MOTOR & DEFROST CONTROL WIRING STANDARD DEFROST CONTROL



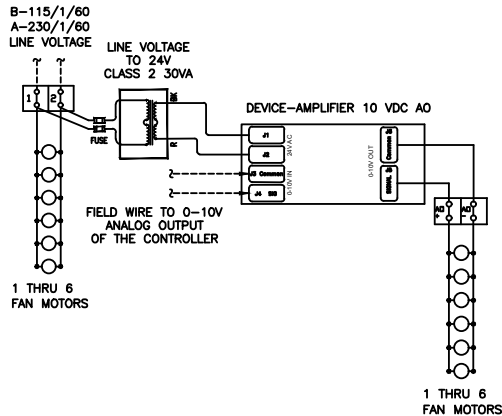
ELECTRIC DEFROST HEATER WIRING



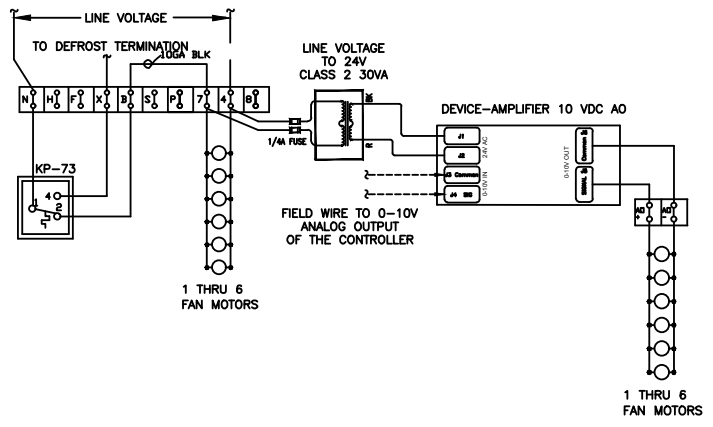
Variable Speed EC Motor Wiring - Motor Code V

Remote 0-10 V signal connected to signal amplifier in the panel enabling variable speed operation.

AIR DEFROST MOTOR WIRING



ELECTRIC DEFROST MOTOR & DEFROST CONTROL WIRING STANDARD DEFROST CONTROL



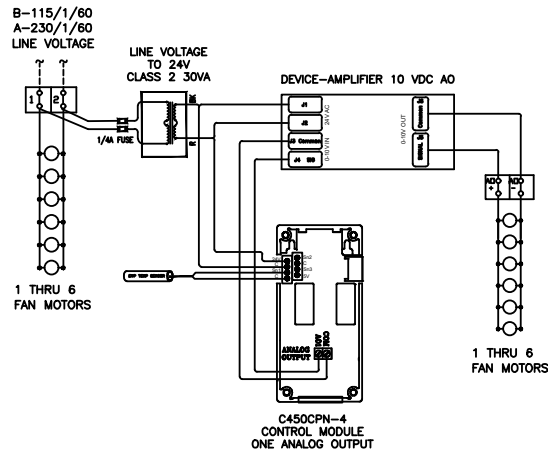
KR Series Compact Unit Coolers

Wiring Diagrams

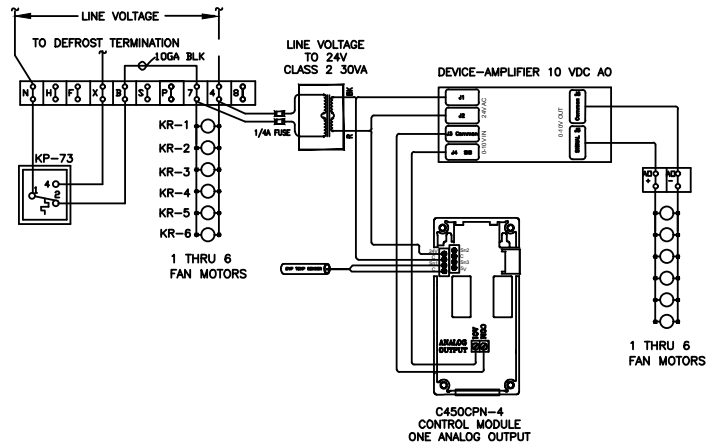
Variable Speed EC Motor Wiring - Motor Code V

Installed system 450 controller in the evaporator enabling variable speed operation.

AIR DEFROST MOTOR WIRING

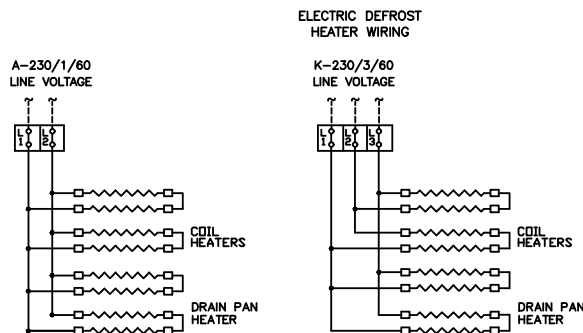


ELECTRIC DEFROST MOTOR & DEFROST CONTROL WIRING STANDARD DEFROST CONTROL



Heater Defrost Motor Wiring

Defrost coil and drain pan heater wiring.

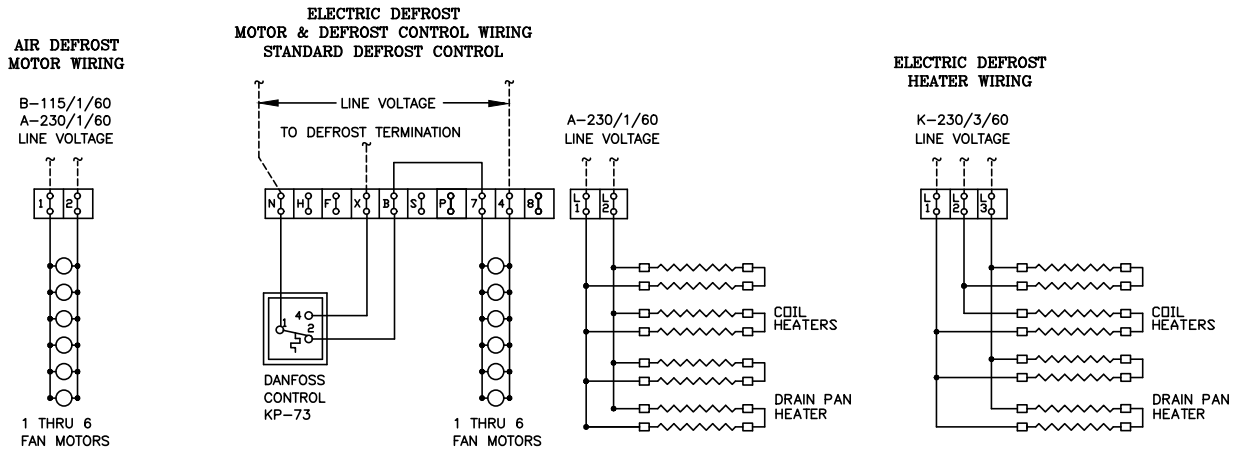


KR Series Compact Unit Coolers

Wiring Diagrams

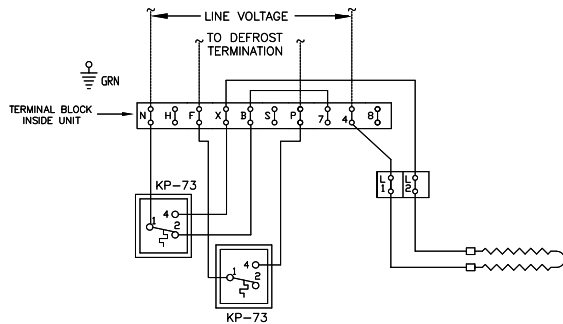
Single Speed PSC Motor Wiring - Motor Code B

Basic wiring with no speed control.

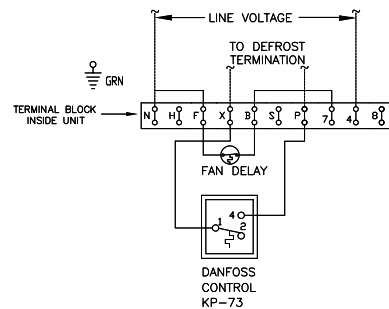


Gas Defrost Setup

H and P Defrost Control Wiring -
 Gas Defrost with Electric Drain Pan Heater



G and K Defrost Control Wiring -
 Gas Defrost with Gas Drain Pan Heater





Use your QR reader to
reference current document
version on www.krack.com.



Krack, a Hussmann Corporation brand

For all customers inquiries,
visit www.krack.com or call 800.922.1919.

www.krack.com
www.hussmann.com