



DOE / NRCAN Model Information Inside

LH and GH/GL Series

UNIT COOLERS

Datasheet: 3240715 Rev. A



Products that provide lasting solutions.

LH and GH/GL Series Unit Coolers

DOE Evaporator Compliant Matrix

	LH		GH / GL	
	DUAL SPEED MOTORS	VARIABLE SPEED MOTORS	DUAL SPEED MOTORS	VARIABLE SPEED MOTORS
DEFROST TYPE				
Air				
Glide Refrigerants*	X	X	X	X
Non-Glide Refrigerants (Including CO ₂)**	-	X	X (Except GL*56A and GL*14A)	X
Electric				
Glide Refrigerants*				
Coolers	X (Except LH*44E)	X	X	X
Freezers	X (Except LH*44E)	X	-	-
Non-Glide Refrigerants (Including CO₂)**				
Coolers	-	X	X (Except GL*56D and GL*14D)	X
Freezers	-	X	-	-
Gas				
Glide Refrigerants*				
Coolers	-	-	X	X
Freezers	-	-	-	-
Non-Glide Refrigerants (Including CO₂)**				
Coolers	-	-	X (Except GL*56() and GL*14())	X
Freezers	-	-	-	-
MOTOR VOLTAGES / PHASE (All 60 HZ)				
115/1	X	X	X	X
208-230/1	X	X	X	X
208-230/3	X	X	X	X
460/1	-	-	-	-
460/3	-	-	-	-
575/3	-	-	-	-

X - Available

* Glide Refrigerants (R-407A, R-407F, R-448A, R-449A, refer to I/O Manual for Others).
Models in tables with "*" are not tied to this note.

** Non-Glide Refrigerants (R-404A, R-507A, refer to I/O Manual for Others)



CO₂ products defined as "standard pressure" are rated for use up to 640 PSI (44.1 bar).
CO₂ products defined as "high pressure" are rated for use up to 1,305 PSI (90 bar).



DOE / NRCan -

The LH and GH/GL is constructed for ease of maintenance with testing and options to meet efficiency required by DOE and NRCan regulations.

LH Series Unit Coolers

Dual Discharge Center Mount - Low Height

At 9-1/4" maximum height, the LH Series is perfect for low clearance walk-in applications in convenience stores, restaurants, food service or other applications held at -20° F or warmer.

Standard Features

- Center mounted models are flush mounted to the ceiling to not interfere with shelving.
- Two-way air discharge provides smooth air movement keeps product fresh longer with less product shrink.
- Standard EC motors are dual speed 1/15 horsepower and multi-voltage operating on 100-240/1/50-60 power.
- Coil constructed of heavy-wall copper tube and rippled full collar aluminum fins.
- Optimized circuiting based on refrigerant type.
- Sealed and pressurized from the factory.
- Factory-wired fans and defrost controls to convenient terminal strips for field connections.
- Plug in motor leads for quick positive connection to wiring harness.

Optional Features and Accessories

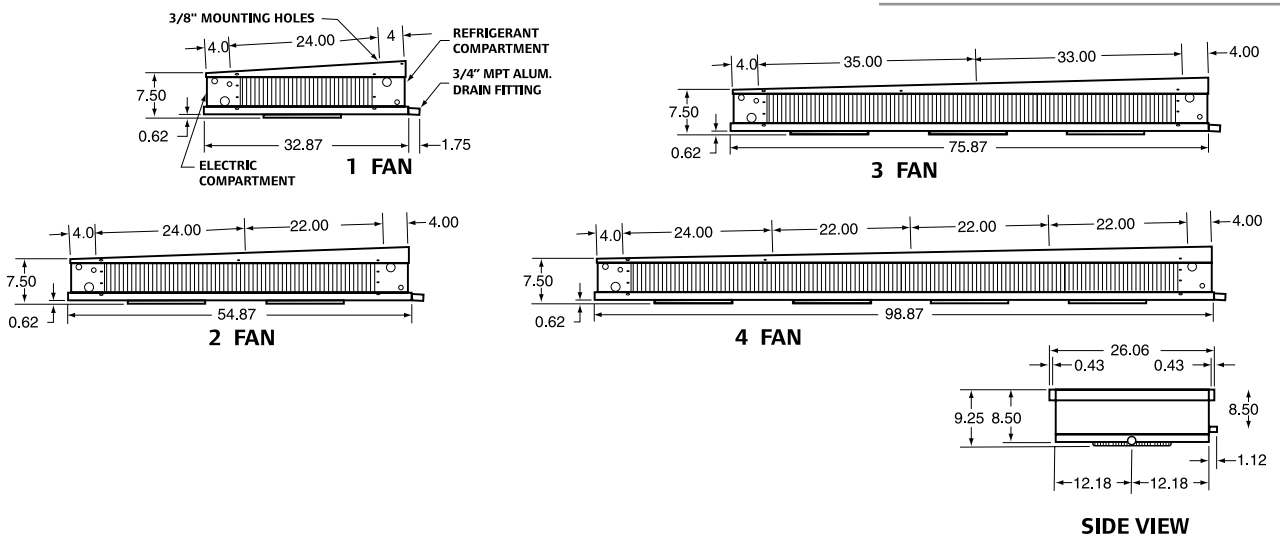
- Electric defrost models for rooms operating down to -20° F.
- Coils circuiting for CO₂ or fluids operating as a secondary coolant.
- Variable Speed EC fan motors requiring a 0-10 V signal for operation from full to minimum speed.
- Installed mechanical or electronic expansion valves.
- Liquid line solenoid valve and suction to liquid heat exchanger shipped loose.
- Painted white or black housing and drain pans to match cooler.
- Stainless-steel housing and drain pans.
- Insulated drain pan to prevent drips from condensation.
- Copper fins or coil coating with Electrofin or Heresite.

Ordering Information

(Specify when ordering all models)

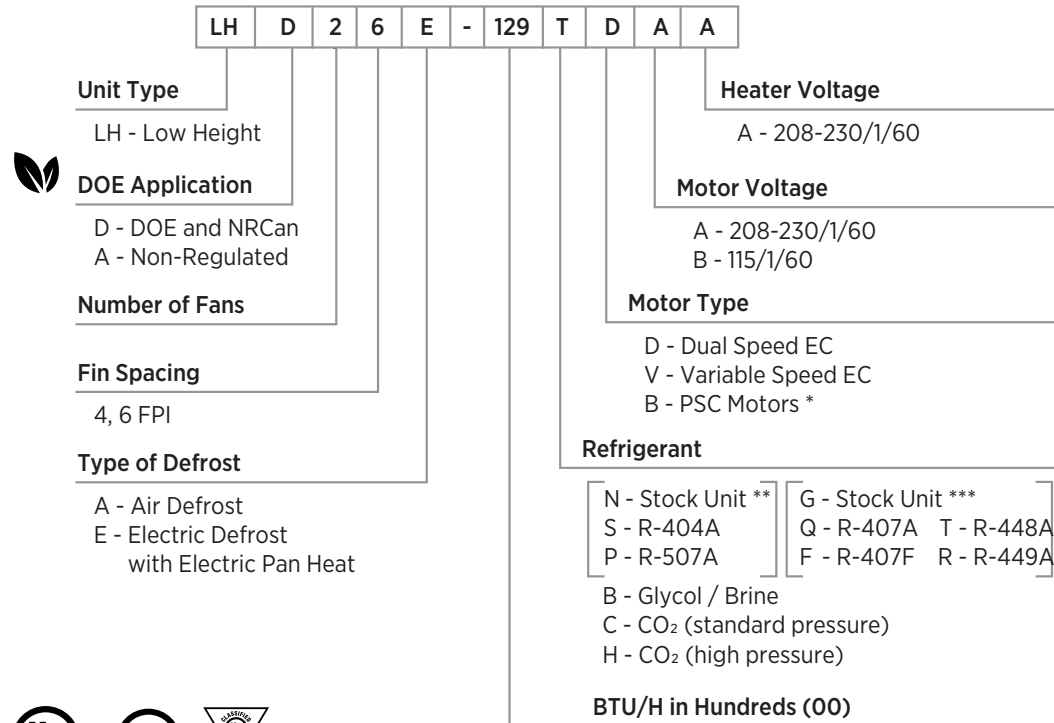
- Complete model number including refrigerant
- Room temperature
- Saturated suction temperature
- Liquid refrigerant temperature
- Optional features
- Optional accessories

Dimensional Data



LH Series Unit Coolers

Model Key



* PSC motors are not allowed in USA or Canada for any evaporator solution.
DOE / NRCan applications will require Dual Speed or Variable Speed fans.
** 'N' Stock Units are for non-glide or glide refrigerants (consult I/O manual for complete refrigerant listing).
*** 'G' Stock Units are for glide refrigerants only (consult I/O manual for complete refrigerant listing).

Wiring Diagrams

Reference typical wiring diagrams for air and electric defrost on page 11 of this bulletin.



DOE / NRCan -

Indicates evaporator models that have an AWEF rating published which meets the efficiency requirements of the US Department of Energy and Natural Resources Canada regulations. These specific regulations are for evaporators manufactured after July 10th, 2020, applied in refrigerated spaces 3000 square feet or less, and held at 55° F room temperature or colder. Not covered in this regulation are unit coolers using secondary refrigerant like glycol.

Hussmann / Krack will ship DOE / NRCan compliant evaporator coil units for regulated / covered applications to meet and adhere with government labeling requirements. **Please note that compliance is at the time of manufacture and responsibility of the OEM.**

The DOE / NRCan compliant evaporators will utilize Dual Speed or Variable Speed EC motors. Controls for these options may be factory installed or field supplied.

Both the Dual Speed and Variable Speed EC motors have default prevention programming. In the event of a control loss input (OV), the motors will run at full speed.

LH Series Unit Coolers

Air and Electric Defrost Specifications

AIR DEFROST

MODEL	Cooler AWEF by Refrigerant and Motor				CAPACITY (BTU/H) @ 10° F TD +25° F EVAP	AIR FLOW (CFM)	REFRIGERATION CONNECTIONS		REF CHARGE (LBS)	DIMENSIONS (IN)			SHIP WGT (LBS)
	[G] Stock Unit**, [Q] R-407A, [F] R-407F, [T] R-448A, [R] R-449A		[N] Stock Unit***, [S] R-404A, [P] R-507A				LIQ	SUCT		L	W	H	
	{D}ual Speed	{V}ariable Speed	{D}ual Speed	{V}ariable Speed									
LH*16A-047[]{ }	9.00	9.00	NA	9.00	4,700	650	1/2"	7/8"	2	32.88	26.06	9.25	42
LH*26A-094[]{ }	9.00	9.00	NA	9.00	9,400	1,300	1/2"	7/8"	3	54.88	26.06	9.25	70
LH*36A-140[]{ }	9.00	9.00	NA	9.00	14,000	1,950	1/2"	7/8"	4	76.88	26.06	9.25	123
LH*46A-187[]{ }	9.00	9.00	NA	9.00	18,700	2,600	1/2"	1-1/8"	5	98.88	26.06	9.25	164
LH*14A-036[]{ }	9.00	9.00	NA	9.00	3,600	680	1/2"	7/8"	2	32.88	26.06	9.25	38
LH*24A-073[]{ }	9.00	9.00	NA	9.00	7,300	1,370	1/2"	7/8"	3	54.88	26.06	9.25	64
LH*34A-109[]{ }	9.00	9.00	NA	9.00	10,900	2,050	1/2"	7/8"	4	76.88	26.06	9.25	105
LH*44A-145[]{ }	9.00	9.00	NA	9.00	14,500	2,730	1/2"	1-1/8"	5	98.88	26.06	9.25	146

* For motor code and refrigerant, use "D" when AWEF rating is shown and "A" for non-regulated applications or where AWEF is NA. [] Location for the refrigerant letter code. { } Include motor code as either "D" for Dual Speed or "V" for Variable Speed EC motor to be used.

** G Stock Units are for glide refrigerants only (consult I/O manual for complete refrigerant listing).

*** N Stock Units are for non-glide or glide refrigerants (consult I/O manual for complete refrigerant listing).

EXAMPLE FULL MODEL:
LHD16A-047QVA is DOE / NRCan with R-407A, Variable Speed EC motor and includes the additional letter A for 208 V single phase fan power.

ELECTRIC DEFROST

MODEL	AWEF by Refrigerant, Motor, and Application								CAPACITY (BTU/H) @ 10° F TD -20° F EVAP	CAPACITY (BTU/H) @ 10° F TD +20° F EVAP	AIR FLOW (CFM)	REFRIGERATION CONNECTIONS		REF CHARGE (LBS)	DIMENSIONS (IN)			SHIP WGT (LBS)
	[G] Stock Unit**, [Q] R-407A, [F] R-407F, [T] R-448A, [R] R-449A				[N] Stock Unit***, [S] R-404A, [P] R-507A							LIQ	SUCT		L	W	H	
	Freezer	Cooler	Freezer	Cooler	Freezer	Cooler	Freezer	Cooler										
LH*16E-043[]{ }	4.15	9.00	4.15	9.00	NA	NA	4.15	9.00	4,300	4,700	650	1/2"	7/8"	2	32.88	26.06	9.25	44
LH*26E-086[]{ }	4.15	9.00	4.15	9.00	NA	NA	4.15	9.00	8,600	9,400	1,300	1/2"	1-1/8"	3	54.88	26.06	9.25	73
LH*36E-129[]{ }	4.15	9.00	4.15	9.00	NA	NA	4.15	9.00	12,900	14,000	1,950	1/2"	1-1/8"	4	76.88	26.06	9.25	127
LH*46E-171[]{ }	4.15	9.00	4.15	9.00	NA	NA	4.15	9.00	17,100	18,700	2,600	1/2"	1-1/8"	5	98.88	26.06	9.25	169
LH*14E-033[]{ }	4.15	9.00	4.15	9.00	NA	NA	4.15	9.00	3,300	3,600	680	1/2"	7/8"	2	32.88	26.06	9.25	40
LH*24E-067[]{ }	4.15	9.00	4.15	9.00	NA	NA	4.15	9.00	6,700	7,300	1,370	1/2"	1-1/8"	3	54.88	26.06	9.25	67
LH*34E-100[]{ }	4.15	9.00	4.15	9.00	NA	NA	4.15	9.00	10,000	10,900	2,050	1/2"	1-1/8"	4	76.88	26.06	9.25	109
LH*44E-132[]{ }	NA	NA	4.15	9.00	NA	NA	4.15	9.00	13,200	14,500	2,730	1/2"	1-1/8"	5	98.88	26.06	9.25	150

* For motor code and refrigerant, use "D" when AWEF rating is shown and "A" for non-regulated applications or where AWEF is NA. [] Location for the refrigerant letter code. { } Include motor code as either "D" for Dual Speed or "V" for Variable Speed EC motor to be used.

** G Stock Units are for glide refrigerants only (consult I/O manual for complete refrigerant listing).

*** N Stock Units are for non-glide or glide refrigerants (consult I/O manual for complete refrigerant listing).

EXAMPLE FULL MODEL:
LHA36E-129SDAA is for non-regulated application with R-404A, Dual Speed EC motor and includes the additional letters AA for 208 V single phase fan and defrost power.

Key Point -

Krack evaporator capacities shown are with **midpoint** evaporating temperature to offer a consistent capacity for selection when using different refrigerants and match other Krack and Hussmann equipment.

Dual Speed fan motors use a voltage input from the incoming fan power to a third connection on the motor to trigger low speed operation. Variable Speed EC need a 0-10 V signal with 10 V as minimum speed operation. Both motor types operate as a single speed EC motor without a control signal.

LH Series Unit Coolers

Air and Electric Defrost Specifications - CO₂ Refrigerant

AIR DEFROST - CO₂

MODEL	AWEF By Refrigerant, Motor and Application		CAPACITY (BTU/H) @ 10° F TD +25° F EVAP	AIR FLOW (CFM)	REFRIGERATION CONNECTIONS				REF CHARGE (LB)	DIMENSIONS (IN)			SHIP WGT (LB)	
	C - CO ₂ (standard pressure) H - CO ₂ (high pressure)				C - CO ₂ (standard pressure)		H - CO ₂ (high pressure)			L	W	H	C - CO ₂ (std)	H - CO ₂ (high)
	{D}ual Speed	{V}ariable Speed			LIQ	SUCT	LIQ	SUCT						
LH*16A-047[]	N/A	9.00	4,700	650	1/2"	7/8"	3/8"	5/8"	1.6	32.88	26.06	9.25	42	47
LH*26A-094[]	N/A	9.00	9,400	1,300	1/2"	7/8"	3/8"	5/8"	2.4	54.88	26.06	9.25	70	79
LH*36A-140[]	N/A	9.00	14,000	1,950	1/2"	7/8"	3/8"	5/8"	3.2	76.88	26.06	9.25	123	136
LH*46A-187[]	N/A	9.00	18,700	2,600	1/2"	1-1/8"	3/8"	5/8"	4.0	98.88	26.06	9.25	164	182
LH*14A-036[]	N/A	9.00	3,600	680	1/2"	7/8"	3/8"	5/8"	1.6	32.88	26.06	9.25	38	43
LH*24A-073[]	N/A	9.00	7,300	1,370	1/2"	7/8"	3/8"	5/8"	2.4	54.88	26.06	9.25	64	73
LH*34A-109[]	N/A	9.00	10,900	2,050	1/2"	7/8"	3/8"	5/8"	3.2	76.88	26.06	9.25	105	118
LH*44A-145[]	N/A	9.00	14,500	2,730	1/2"	1-1/8"	3/8"	5/8"	4.0	98.88	26.06	9.25	146	164

ELECTRIC DEFROST - CO₂

MODEL	AWEF By Refrigerant, Motor and Application				CAPACITY (BTU/H) @ 10° F TD -20° F EVAP	CAPACITY (BTU/H) @ 10° F TD +20° F EVAP	AIR FLOW (CFM)	REFRIGERATION CONNECTIONS				REF CHARGE (LB)	DIMENSIONS (IN)			SHIP WGT (LB)	
	C - CO ₂ (standard pressure) H - CO ₂ (high pressure)							C - CO ₂ (standard pressure)		H - CO ₂ (high pressure)			L	W	H	C - CO ₂ (std)	H - CO ₂ (high)
	{D}ual Speed		{V}ariable Speed					LIQ	SUCT	LIQ	SUCT						
	Freezer	Cooler	Freezer	Cooler													
LH*16E-043[]	4.15	9.00	4.15	9.00	4,300	4,700	650	1/2"	7/8"	3/8"	5/8"	1.6	32.88	26.06	9.25	44	49
LH*26E-086[]	4.15	9.00	4.15	9.00	8,600	9,400	1,300	1/2"	1-1/8"	3/8"	5/8"	2.4	54.88	26.06	9.25	73	82
LH*36E-129[]	4.15	9.00	4.15	9.00	12,900	14,000	1,950	1/2"	1-1/8"	3/8"	5/8"	3.2	76.88	26.06	9.25	127	140
LH*46E-171[]	4.15	9.00	4.15	9.00	17,100	18,700	2,600	1/2"	1-1/8"	3/8"	5/8"	4.0	98.88	26.06	9.25	169	187
LH*14E-033[]	4.15	9.00	4.15	9.00	3,300	3,600	680	1/2"	7/8"	3/8"	5/8"	1.6	32.88	26.06	9.25	40	45
LH*24E-067[]	4.15	9.00	4.15	9.00	6,700	7,300	1,370	1/2"	1-1/8"	3/8"	5/8"	2.4	54.88	26.06	9.25	67	76
LH*34E-100[]	4.15	9.00	4.15	9.00	10,000	10,900	2,050	1/2"	1-1/8"	3/8"	5/8"	3.2	76.88	26.06	9.25	109	122
LH*44E-132[]	N/A	9.00	4.15	9.00	13,200	14,500	2,730	1/2"	1-1/8"	3/8"	5/8"	4.0	98.88	26.06	9.25	150	168

* For motor code and refrigerant, use "D" when AWEF rating is shown and "A" for non-regulated applications or where AWEF is NA.

{ } Include motor code as either "D" for Dual Speed or "V" for Variable Speed EC motor to be used.

[] Location for the refrigerant letter code.

EXAMPLE FULL MODEL:

LHD16A-047CVA is DOE / NRCan with CO₂, Variable Speed EC motor and includes the additional letter A for 208 V single phase fan power.

LHA36E-129CDA is for non-regulated application with CO₂, Dual Speed EC motor and includes the additional letters AA for 208 V single phase fan and defrost power.



Key Point -

Krack evaporator capacities shown are with **midpoint** evaporating temperature to offer a consistent capacity for selection when using different refrigerants and match other Krack and Hussmann equipment.

LH Series Unit Coolers

Fan Motor and Electric Defrost Data

ELECTRIC DEFROST AND PAN HEATER DATA										
MODEL	DUAL OR VARIABLE SPEED EC MOTORS				PSC MOTORS				ELECTRIC DEFROST	
	115/1/60		208-230/1/60		115/1/60		208-230/1/60		230/1/60	
	AMPS	WATTS	AMPS	WATTS	AMPS	WATTS	AMPS	WATTS	AMPS	WATTS
1 FAN	0.9	50	0.6	49	0.6	71	0.3	66	7.2	1500
2 FAN	1.8	100	1.2	97	1.2	142	0.6	132	12.0	2500
3 FAN	2.7	150	1.8	146	1.8	213	0.9	198	16.8	3500
4 FAN	3.6	200	2.4	194	2.4	284	1.2	264	21.6	4500

Dual or Variable Speed EC Motors are motor codes "D" and "V". PSC motors are motor code "B". Refer to complete Model Key on page 3.

 **Key Point -**

Krack evaporator capacities shown are with **midpoint** evaporating temperature to offer a consistent capacity for selection when using different refrigerants and match other Krack and Hussmann equipment.

Dual Speed fan motors use a voltage input from the incoming fan power to a third connection on the motor to trigger low speed operation. Variable Speed EC need a 0-10 V signal with 10 V as minimum speed operation. Both motor types operate as a single speed EC motor without a control signal.

GH/GL Series Unit Coolers

Standard Features

The GH/GL Air Series Unit coolers keep produce fresh by providing low velocity air distribution to both sides of system. Quiet operation provides a comfortable environment for employees.

Standard Features

- Low and high silhouette center mounted models will not interfere with shelving.
- Two-way air discharge provides smooth air movement, creating a low velocity “umbrella” style air distribution.
- Installation is level and flush to the ceiling with internal hanger rods for a clean appearance.
- Sound levels range from 53 dbA for a one fan to 60 dbA for a six-fan model measured six feet horizontally from the center of the unit.
- Standard EC motors are dual speed 1/15 horsepower and multi-voltage operating on 100-240/1/50-60 power.
- Coil constructed of heavy-wall copper tube and rippled full collar aluminum fins.
- Optimized circuiting based on refrigerant type.
- Sealed and pressurized from the factory.
- Factory-wired fans and defrost controls to convenient terminal strips for field connections.
- Plug in motor leads for quick positive connection to wiring harness

Optional Features and Accessories

- Air defrost for rooms +34° F and warmer.
- Electric defrost models for rooms operating down to +20° F.
- Gas defrost without pan heat operate down +32° F.
- Gas defrost models with pan heat operate down to +20° F.
- Coils circuited for CO₂ or fluids operating as a secondary coolant.
- Variable Speed EC fan motors requiring a 0-10 V signal for operation from full to minimum speed.
- Installed mechanical or electronic expansion valves.
- Liquid line solenoid valve and suction to liquid heat exchanger shipped loose.
- Painted white or black housing and drain pans to match cooler.
- Stainless-steel housing and drain pans.
- Insulated aluminum drain pan to prevent drips from condensation.
- Copper fins or coil coating with Electrofin or Heresite.
- Air filters with wire fan guard.
- Reverse air flow operation.


Ordering Information

(Specify when ordering all models)

- Complete model number including refrigerant
- Room temperature
- Saturated suction temperature
- Liquid refrigerant temperature
- Optional features
- Optional accessories

GH/GL Series Unit Coolers

Model Key

	GL	D	3	6	D	-	135	T	D	A	K						
Unit Type	GH & GL: Gentle Air																
 DOE Application	D - DOE and NRCan A - Non-Regulated																
Number of Fans	4, 6 FPI																
Fin Spacing	4, 6 FPI																
Type of Defrost	A - Air Defrost D - Electric Defrost w/ No Pan Heat F - 3 Pipe Hot Gas w/ No Pan Heat# H - 3 Pipe Hot Gas w/ Electric Pan Heat# M - 2 Pipe Koolgas w/ No Pan Heat## P - 2 Pipe Koolgas w/ Electric Pan Heat##																
Heater Type	A - 208-230/1/60 B - 115/1/60 * K - 208-230/3/60																
Motor Voltage	A - 208-230/1/60 B - 115/1/60																
Motor Type	D - Dual Speed EC V - Variable Speed EC B - PSC Motors **																
Refrigerant	<table border="1"> <tr> <td>N - Stock Unit ***</td> <td>G - Stock Unit ****</td> </tr> <tr> <td>S - R-404A</td> <td>Q - R-407A T - R-448A</td> </tr> <tr> <td>P - R-507A</td> <td>F - R-407F R - R-449A</td> </tr> </table> B - Glycol / Brine C - CO ₂ (standard pressure) H - CO ₂ (high pressure)											N - Stock Unit ***	G - Stock Unit ****	S - R-404A	Q - R-407A T - R-448A	P - R-507A	F - R-407F R - R-449A
N - Stock Unit ***	G - Stock Unit ****																
S - R-404A	Q - R-407A T - R-448A																
P - R-507A	F - R-407F R - R-449A																
BTU/H in Hundreds (00)																	



* Available on pan heaters for "H" and "P" defrost options only.

** PSC motors are not allowed in USA or Canada for any evaporator solution.

*** 'N' Stock Units are for non-glide or glide refrigerants (consult I/O manual for complete refrigerant listing).

**** 'G' Stock Units are for glide refrigerants only (consult I/O manual for complete refrigerant listing).

F and H defrost types not available for CO₂ (C or H) refrigerant.

M and P defrost types not available for C refrigerant, H refrigerant will be available soon.



DOE / NRCan -

Indicates evaporator models that have an AWEF rating published which meets the efficiency requirements of the US Department of Energy and Natural Resources Canada regulations. These specific regulations are for evaporators manufactured after July 10th, 2020, applied in refrigerated spaces 3000 square feet or less, and held at 55° F room temperature or colder. Not covered in this regulation are unit coolers using secondary refrigerant like glycol.

Hussmann / Krack will ship DOE / NRCan compliant evaporator coil units for regulated / covered applications to meet and adhere with government labeling requirements. **Please note that compliance is at the time of manufacture and responsibility of the OEM.**

The DOE / NRCan compliant evaporators will utilize Dual Speed or Variable Speed EC motors. Controls for these options may be factory installed or field supplied.

Both the Dual Speed and Variable Speed EC motors have default prevention programming. In the event of a control loss input (OV), the motors will run at full speed.

GH/GL Series Unit Coolers

Air Defrost Specifications

GENTLE AIR - 18" HIGH SILHOUETTE - MEDIUM TEMPERATURE

MODEL	Cooler AWEF by Refrigerant and Motor				CAPACITY (BTU/H) @ 10° F TD +25° F EVAP	AIR FLOW (CFM)	REFRIGERATION CONNECTIONS		REF CHARGE (LBS)	DIMENSIONS (IN)			SHIP WGT (LBS)
	[G] Stock Unit**, [Q] R-407A, [F] R-407F, [T] R-448A, [R] R-449A		[N] Stock Unit***, [S] R-404A, [P] R-507A				LIQ	SUCT		L	W	H	
	{D}ual Speed	{V}variable Speed	{D}ual Speed	{V}variable Speed									
GH*16A-060[]{ }	9.00	9.00	9.00	9.00	6,000	900	1/2"	7/8"	3	31.75	28.75	18.25	130
GH*26A-130[]{ }	9.00	9.00	9.00	9.00	13,000	1,800	1/2"	7/8"	4	49.75	28.75	18.25	180
GH*36A-198[]{ }	9.00	9.00	9.00	9.00	19,800	2,700	1/2"	1-1/8"	6	67.75	28.75	18.25	240
GH*46A-270[]{ }	9.00	9.00	9.00	9.00	27,000	3,600	1/2"	1-1/8"	8	85.75	28.75	18.25	320
GH*56A-340[]{ }	9.00	9.00	9.00	9.00	34,000	4,500	1/2"	1-3/8"	9	103.75	28.75	18.25	370
GH*66A-410[]{ }	9.00	9.00	9.00	9.00	41,000	5,400	1/2"	1-3/8"	11	121.75	28.75	18.25	420
GH*14A-050[]{ }	9.00	9.00	9.00	9.00	5,000	940	1/2"	7/8"	3	31.75	28.75	18.25	120
GH*24A-100[]{ }	9.00	9.00	9.00	9.00	10,000	1,880	1/2"	7/8"	4	49.75	28.75	18.25	170
GH*34A-150[]{ }	9.00	9.00	9.00	9.00	15,000	2,820	1/2"	1-1/8"	6	67.75	28.75	18.25	230
GH*44A-200[]{ }	9.00	9.00	9.00	9.00	20,000	3,760	1/2"	1-1/8"	8	85.75	28.75	18.25	310
GH*54A-250[]{ }	9.00	9.00	9.00	9.00	25,000	4,700	1/2"	1-3/8"	9	103.75	28.75	18.25	360
GH*64A-300[]{ }	9.00	9.00	9.00	9.00	30,000	5,640	1/2"	1-3/8"	11	121.75	28.75	18.25	410

GENTLE AIR - 12" LOW SILHOUETTE - MEDIUM TEMPERATURE

MODEL	Cooler AWEF by Refrigerant and Motor				CAPACITY (BTU/H) @ 10° F TD +25° F EVAP	AIR FLOW (CFM)	REFRIGERATION CONNECTIONS		REF CHARGE (LBS)	DIMENSIONS (IN)			SHIP WGT (LBS)
	[G] Stock Unit**, [Q] R-407A, [F] R-407F, [T] R-448A, [R] R-449A		[N] Stock Unit***, [S] R-404A, [P] R-507A				LIQ	SUCT		L	W	H	
	{D}ual Speed	{V}variable Speed	{D}ual Speed	{V}variable Speed									
GL*16A-045[]{ }	9.00	9.00	9.00	9.00	4,500	600	1/2"	5/8"	2	31.75	28.75	12.25	100
GL*26A-090[]{ }	9.00	9.00	9.00	9.00	9,000	1,200	1/2"	7/8"	3	49.75	28.75	12.25	140
GL*36A-135[]{ }	9.00	9.00	9.00	9.00	13,500	1,800	1/2"	1-1/8"	4	67.75	28.75	12.25	190
GL*46A-180[]{ }	9.00	9.00	9.00	9.00	18,000	2,400	1/2"	1-1/8"	5	85.75	28.75	12.25	250
GL*56A-225[]{ }	9.00	9.00	NA	9.00	22,500	3,000	1/2"	1-1/8"	5	103.75	28.75	12.25	290
GL*66A-268[]{ }	9.00	9.00	9.00	9.00	26,800	3,600	1/2"	1-1/8"	6	121.75	28.75	12.25	340
GL*14A-035[]{ }	9.00	9.00	NA	9.00	3,500	630	1/2"	5/8"	2	31.75	28.75	12.25	90
GL*24A-070[]{ }	9.00	9.00	9.00	9.00	7,000	1,260	1/2"	7/8"	3	49.75	28.75	12.25	130
GL*34A-105[]{ }	9.00	9.00	9.00	9.00	10,500	1,890	1/2"	1-1/8"	4	67.75	28.75	12.25	180
GL*44A-140[]{ }	9.00	9.00	9.00	9.00	14,000	2,520	1/2"	1-1/8"	5	85.75	28.75	12.25	240
GL*54A-175[]{ }	9.00	9.00	9.00	9.00	17,500	3,150	1/2"	1-1/8"	5	103.75	28.75	12.25	280
GL*64A-210[]{ }	9.00	9.00	9.00	9.00	21,000	3,780	1/2"	1-1/8"	6	121.75	28.75	12.25	330

* All air defrost are **DOE / NRCan** compliant when applied with "D" Dual Speed or "V" Variable Speed EC motor codes and refrigerants shown above.

[] Location for the refrigerant letter code.

{ } Include motor code as either "D" for Dual Speed or "V" for Variable Speed EC motor to be used.

** **G Stock Units** are for glide refrigerants only (consult I/O manual for complete refrigerant listing).

*** **N Stock Units** are for non-glide or glide refrigerants (consult I/O manual for complete refrigerant listing).

EXAMPLE FULL MODEL:

GH034A-150TDA is DOE / NRCan with R-404A, Dual Speed EC motor and includes the additional letter A for 208 V single phase.



Key Point -

Krack evaporator capacities shown are with **midpoint** evaporating temperature to offer a consistent capacity for selection when using different refrigerants and match other Krack and Hussmann equipment.

GH/GL Series Unit Coolers

Electric Defrost Specifications

GENTLE AIR - 18" HIGH SILHOUETTE - MEDIUM TEMPERATURE

MODEL	Cooler AWEF by Refrigerant and Motor				CAPACITY (BTU/H) @ 10° F TD +25° F EVAP	AIR FLOW (CFM)	REFRIGERATION CONNECTIONS		REF CHARGE (LBS)	DIMENSIONS (IN)			SHIP WGT (LBS)
	[G] Stock Unit**, [Q] R-407A, [F] R-407F, [T] R-448A, [R] R-449A		[N] Stock Unit***, [S] R-404A, [P] R-507A				LIQ	SUCT		L	W	H	
	{D}ual Speed	{V}ariable Speed	{D}ual Speed	{V}ariable Speed									
GH*16D-060[]{ }	9.00	9.00	9.00	9.00	6,000	900	1/2"	7/8"	3	31.75	28.75	18.25	130
GH*26D-130[]{ }	9.00	9.00	9.00	9.00	13,000	1,800	1/2"	7/8"	4	49.75	28.75	18.25	180
GH*36D-198[]{ }	9.00	9.00	9.00	9.00	19,800	2,700	1/2"	1-1/8"	6	67.75	28.75	18.25	240
GH*46D-270[]{ }	9.00	9.00	9.00	9.00	27,000	3,600	1/2"	1-1/8"	8	85.75	28.75	18.25	320
GH*56D-340[]{ }	9.00	9.00	9.00	9.00	34,000	4,500	1/2"	1-3/8"	9	103.75	28.75	18.25	370
GH*66D-410[]{ }	9.00	9.00	9.00	9.00	41,000	5,400	1/2"	1-3/8"	11	121.75	28.75	18.25	420
GH*14D-050[]{ }	9.00	9.00	9.00	9.00	5,000	940	1/2"	7/8"	3	31.75	28.75	18.25	120
GH*24D-100[]{ }	9.00	9.00	9.00	9.00	10,000	1,880	1/2"	7/8"	4	49.75	28.75	18.25	170
GH*34D-150[]{ }	9.00	9.00	9.00	9.00	15,000	2,820	1/2"	1-1/8"	6	67.75	28.75	18.25	230
GH*44D-200[]{ }	9.00	9.00	9.00	9.00	20,000	3,760	1/2"	1-1/8"	8	85.75	28.75	18.25	310
GH*54D-250[]{ }	9.00	9.00	9.00	9.00	25,000	4,700	1/2"	1-3/8"	9	103.75	28.75	18.25	360
GH*64D-300[]{ }	9.00	9.00	9.00	9.00	30,000	5,640	1/2"	1-3/8"	11	121.75	28.75	18.25	410

GENTLE AIR - 12" LOW SILHOUETTE - MEDIUM TEMPERATURE

MODEL	Cooler AWEF by Refrigerant and Motor				CAPACITY (BTU/H) @ 10° F TD +25° F EVAP	AIR FLOW (CFM)	REFRIGERATION CONNECTIONS		REF CHARGE (LBS)	DIMENSIONS (IN)			SHIP WGT (LBS)
	[G] Stock Unit**, [Q] R-407A, [F] R-407F, [T] R-448A, [R] R-449A		[N] Stock Unit***, [S] R-404A, [P] R-507A				LIQ	SUCT		L	W	H	
	{D}ual Speed	{V}ariable Speed	{D}ual Speed	{V}ariable Speed									
GL*16D-045[]{ }	9.00	9.00	9.00	9.00	4,500	600	1/2"	5/8"	2	31.75	28.75	12.25	100
GL*26D-090[]{ }	9.00	9.00	9.00	9.00	9,000	1,200	1/2"	7/8"	3	49.75	28.75	12.25	140
GL*36D-135[]{ }	9.00	9.00	9.00	9.00	13,500	1,800	1/2"	1-1/8"	4	67.75	28.75	12.25	190
GL*46D-180[]{ }	9.00	9.00	9.00	9.00	18,000	2,400	1/2"	1-1/8"	5	85.75	28.75	12.25	250
GL*56D-225[]{ }	9.00	9.00	NA	9.00	22,500	3,000	1/2"	1-1/8"	5	103.75	28.75	12.25	290
GL*66D-268[]{ }	9.00	9.00	9.00	9.00	26,800	3,600	1/2"	1-1/8"	6	121.75	28.75	12.25	340
GL*14D-035[]{ }	9.00	9.00	NA	9.00	3,500	630	1/2"	5/8"	2	31.75	28.75	12.25	90
GL*24D-070[]{ }	9.00	9.00	9.00	9.00	7,000	1,260	1/2"	7/8"	3	49.75	28.75	12.25	130
GL*34D-105[]{ }	9.00	9.00	9.00	9.00	10,500	1,890	1/2"	1-1/8"	4	67.75	28.75	12.25	180
GL*44D-140[]{ }	9.00	9.00	9.00	9.00	14,000	2,520	1/2"	1-1/8"	5	85.75	28.75	12.25	240
GL*54D-175[]{ }	9.00	9.00	9.00	9.00	17,500	3,150	1/2"	1-1/8"	5	103.75	28.75	12.25	280
GL*64D-210[]{ }	9.00	9.00	9.00	9.00	21,000	3,780	1/2"	1-1/8"	6	121.75	28.75	12.25	330

* All electric defrost are DOE / NRCan compliant when applied with "D" Dual Speed or "V" Variable Speed EC motor codes and refrigerants shown above.

[] Location for the refrigerant letter code.

{ } Include motor code as either "D" for Dual Speed or "V" for Variable Speed EC motor to be used.

** G Stock Units are for glide refrigerants only (consult I/O manual for complete refrigerant listing).

*** N Stock Units are for non-glide or glide refrigerants (consult I/O manual for complete refrigerant listing).

EXAMPLE FULL MODEL:

GH034D-105TDAA is DOE / NRCan with R-448A, Dual Speed EC motor and includes the additional letter A for 208 V single phase fan power and K for 208/3/60 defrost.

 Key Point -

Krack evaporator capacities shown are with **midpoint** evaporating temperature to offer a consistent capacity for selection when using different refrigerants and match other Krack and Hussmann equipment.

GH/GL Series Unit Coolers

Hot Gas Defrost Specifications

GAS - 18" HIGH SILHOUETTE - MEDIUM TEMPERATURE

MODEL	Cooler AWEF by Refrigerant and Motor				CAPACITY (BTU/H) @ 10° F TD +25° F EVAP	AIR FLOW (CFM)	REFRIGERATION CONNECTIONS		REF CHARGE (LBS)	DIMENSIONS (IN)			SHIP WGT (LBS)
	[G] Stock Unit**, [Q] R-407A, [F] R-407F, [T] R-448A, [R] R-449A		[N] Stock Unit***, [S] R-404A, [P] R-507A				LIQ	SUCT		L	W	H	
	{D}ual Speed	{V}variable Speed	{D}ual Speed	{V}variable Speed									
GH*16(-)060[] { }	9.00	9.00	9.00	9.00	6,000	900	1/2"	7/8"	3	31.75	28.75	18.25	130
GH*26(-)130[] { }	9.00	9.00	9.00	9.00	13,000	1,800	1/2"	7/8"	4	49.75	28.75	18.25	180
GH*36(-)198[] { }	9.00	9.00	9.00	9.00	19,800	2,700	1/2"	1-1/8"	6	67.75	28.75	18.25	240
GH*46(-)270[] { }	9.00	9.00	9.00	9.00	27,000	3,600	1/2"	1-1/8"	8	85.75	28.75	18.25	320
GH*56(-)340[] { }	9.00	9.00	9.00	9.00	34,000	4,500	1/2"	1-3/8"	9	103.75	28.75	18.25	370
GH*66(-)410[] { }	9.00	9.00	9.00	9.00	41,000	5,400	1/2"	1-3/8"	11	121.75	28.75	18.25	420
GH*14(-)050[] { }	9.00	9.00	9.00	9.00	5,000	940	1/2"	7/8"	3	31.75	28.75	18.25	120
GH*24(-)100[] { }	9.00	9.00	9.00	9.00	10,000	1,880	1/2"	7/8"	4	49.75	28.75	18.25	170
GH*34(-)150[] { }	9.00	9.00	9.00	9.00	15,000	2,820	1/2"	1-1/8"	6	67.75	28.75	18.25	230
GH*44(-)200[] { }	9.00	9.00	9.00	9.00	20,000	3,760	1/2"	1-1/8"	8	85.75	28.75	18.25	310
GH*54(-)250[] { }	9.00	9.00	9.00	9.00	25,000	4,700	1/2"	1-3/8"	9	103.75	28.75	18.25	360
GH*64(-)300[] { }	9.00	9.00	9.00	9.00	30,000	5,640	1/2"	1-3/8"	11	121.75	28.75	18.25	410

GAS - 12" LOW SILHOUETTE - MEDIUM TEMPERATURE

MODEL	Cooler AWEF by Refrigerant and Motor				CAPACITY (BTU/H) @ 10° F TD +25° F EVAP	AIR FLOW (CFM)	REFRIGERATION CONNECTIONS		REF CHARGE (LBS)	DIMENSIONS (IN)			SHIP WGT (LBS)
	[G] Stock Unit**, [Q] R-407A, [F] R-407F, [T] R-448A, [R] R-449A		[N] Stock Unit***, [S] R-404A, [P] R-507A				LIQ	SUCT		L	W	H	
	{D}ual Speed	{V}variable Speed	{D}ual Speed	{V}variable Speed									
GL*16(-)045[] { }	9.00	9.00	9.00	9.00	4,500	600	1/2"	7/8"	2	31.75	28.75	12.25	100
GL*26(-)090[] { }	9.00	9.00	9.00	9.00	9,000	1,200	1/2"	7/8"	3	49.75	28.75	12.25	140
GL*36(-)135[] { }	9.00	9.00	9.00	9.00	13,500	1,800	1/2"	7/8"	4	67.75	28.75	12.25	190
GL*46(-)180[] { }	9.00	9.00	9.00	9.00	18,000	2,400	1/2"	1-1/8"	5	85.75	28.75	12.25	250
GL*56(-)225[] { }	9.00	9.00	NA	9.00	22,500	3,000	1/2"	1-1/8"	5	103.75	28.75	12.25	290
GL*66(-)268[] { }	9.00	9.00	9.00	9.00	26,800	3,600	1/2"	1-1/8"	6	121.75	28.75	12.25	340
GL*14(-)035[] { }	9.00	9.00	NA	9.00	3,500	630	1/2"	7/8"	2	31.75	28.75	12.25	90
GL*24(-)070[] { }	9.00	9.00	9.00	9.00	7,000	1,260	1/2"	7/8"	3	49.75	28.75	12.25	130
GL*34(-)105[] { }	9.00	9.00	9.00	9.00	10,500	1,890	1/2"	7/8"	4	67.75	28.75	12.25	180
GL*44(-)140[] { }	9.00	9.00	9.00	9.00	14,000	2,520	1/2"	1-1/8"	5	85.75	28.75	12.25	240
GL*54(-)175[] { }	9.00	9.00	9.00	9.00	17,500	3,150	1/2"	1-1/8"	5	103.75	28.75	12.25	280
GL*64(-)210[] { }	9.00	9.00	9.00	9.00	21,000	3,780	1/2"	1-1/8"	6	121.75	28.75	12.25	330

* All gas defrost are **DOE / NRCan** when applied with "D" Dual Speed or "V" Variable Speed EC motors and refrigerants shown.

{ } Gas defrost type. [] Location for the refrigerant letter code.

{ } Include motor code as either "D" for Dual Speed or "V" for Variable Speed EC motor to be used.

** **G Stock Units** are for glide refrigerants only (consult I/O manual for complete refrigerant listing).

*** **N Stock Units** are for non-glide or glide refrigerants (consult I/O manual for complete refrigerant listing).

EXAMPLE FULL MODEL:

GHD34M-150TDA is DOE / NRCan with R-448A, Dual Speed EC motor and includes the additional letter A for 208 V single phase fan power.

Available Gas Defrost Types

(H) - HGE 3 Pipe Hot Gas with Electric Pan Heat

No defrost termination or fan delay, +20° F or warmer room temperature.

(F) - HG 3 Pipe Hot Gas with No Pan Heat,

No defrost termination or fan delay, +32° F or warmer room temperature.

(P) - KGE 2 Pipe Kool Gas with Electric Pan Heat,

+20° F or warmer room temperature.

(M) - KG 2 Pipe Kool Gas with No Pan Heat,

+32° F or warmer room temperature.

Key Point -

Krack evaporator capacities shown are with **midpoint** evaporating temperature to offer a consistent capacity for selection when using different refrigerants and match other Krack and Hussmann equipment.

GH/GL Series Unit Coolers

Air Defrost Specifications - CO₂ Refrigerant

GENTLE AIR - 18" HIGH SILHOUETTE - MEDIUM TEMPERATURE - CO₂

MODEL	Cooler AWEF By Refrigerant and Motor		CAPACITY (BTU/H) @ 10° F TD +25° F EVAP	AIR FLOW (CFM)	REFRIGERATION CONNECTIONS				REF CHARGE (LB)	DIMENSIONS (IN)			SHIP WGT (LB)	
	C - CO ₂ (standard pressure) H - CO ₂ (high pressure)				C - CO ₂ (standard pressure)		H - CO ₂ (high pressure)			L	W	H	C - CO ₂ (std)	H - CO ₂ (high)
	{D}ual Speed	{V}ariable Speed			LIQ	SUCT	LIQ	SUCT						
GHD16A-060[]{ }	9.00	9.00	6,000	900	1/2"	7/8"	3/8"	5/8"	2.4	31.75	28.75	18.25	130	140
GHD26A-130[]{ }	9.00	9.00	13,000	1,800	1/2"	7/8"	3/8"	5/8"	3.2	49.75	28.75	18.25	180	197
GHD36A-198[]{ }	9.00	9.00	19,800	2,700	1/2"	1-1/8"	3/8"	5/8"	4.8	67.75	28.75	18.25	240	265
GHD46A-270[]{ }	9.00	9.00	27,000	3,600	1/2"	1-1/8"	3/8"	5/8"	6.4	85.75	28.75	18.25	320	352
GHD56A-340[]{ }	9.00	9.00	34,000	4,500	1/2"	1-1/8"	3/8"	5/8"	7.2	103.75	28.75	18.25	370	409
GHD66A-410[]{ }	9.00	9.00	41,000	5,400	1/2"	1-1/8"	1/2"	5/8"	8.8	121.75	28.75	18.25	420	467
GHD14A-050[]{ }	9.00	9.00	5,000	940	1/2"	7/8"	3/8"	5/8"	2.4	31.75	28.75	18.25	120	130
GHD24A-100[]{ }	9.00	9.00	10,000	1,880	1/2"	7/8"	3/8"	5/8"	3.2	49.75	28.75	18.25	170	187
GHD34A-150[]{ }	9.00	9.00	15,000	2,820	1/2"	1-1/8"	3/8"	5/8"	4.8	67.75	28.75	18.25	230	255
GHD44A-200[]{ }	9.00	9.00	20,000	3,760	1/2"	1-1/8"	3/8"	5/8"	6.4	85.75	28.75	18.25	310	342
GHD54A-250[]{ }	9.00	9.00	25,000	4,700	1/2"	1-1/8"	3/8"	5/8"	7.2	103.75	28.75	18.25	360	399
GHD64A-300[]{ }	9.00	9.00	30,000	5,640	1/2"	1-1/8"	1/2"	5/8"	8.8	121.75	28.75	18.25	410	457

GENTLE AIR - 12" LOW SILHOUETTE - MEDIUM TEMPERATURE - CO₂

MODEL	Cooler AWEF By Refrigerant and Motor		CAPACITY (BTU/H) @ 10° F TD +25° F EVAP	AIR FLOW (CFM)	REFRIGERATION CONNECTIONS				REF CHARGE (LB)	DIMENSIONS (IN)			SHIP WGT (LB)	
	C - CO ₂ (standard pressure) H - CO ₂ (high pressure)				C - CO ₂ (standard pressure)		H - CO ₂ (high pressure)			L	W	H	C - CO ₂ (std)	H - CO ₂ (high)
	{D}ual Speed	{V}ariable Speed			LIQ	SUCT	LIQ	SUCT						
GLD16A-045[]{ }	9.00	9.00	4,500	600	1/2"	5/8"	3/8"	5/8"	1.6	31.75	28.75	12.25	100	105
GLD26A-090[]{ }	9.00	9.00	9,000	1,200	1/2"	7/8"	3/8"	5/8"	2.4	49.75	28.75	12.25	140	149
GLD36A-135[]{ }	9.00	9.00	13,500	1,800	1/2"	1-1/8"	3/8"	5/8"	3.2	67.75	28.75	12.25	190	203
GLD46A-180[]{ }	9.00	9.00	18,000	2,400	1/2"	1-1/8"	3/8"	5/8"	4	85.75	28.75	12.25	250	267
GLD56A-225[]{ }	9.00	9.00	22,500	3,000	1/2"	1-1/8"	3/8"	5/8"	4	103.75	28.75	12.25	290	312
GLD66A-268[]{ }	9.00	9.00	26,800	3,600	1/2"	1-1/8"	1/2"	5/8"	4.8	121.75	28.75	12.25	340	366
GLD14A-035[]{ }	9.00	9.00	3,500	630	1/2"	5/8"	3/8"	5/8"	1.6	31.75	28.75	12.25	90	95
GLD24A-070[]{ }	9.00	9.00	7,000	1,260	1/2"	7/8"	3/8"	5/8"	2.4	49.75	28.75	12.25	130	139
GLD34A-105[]{ }	9.00	9.00	10,500	1,890	1/2"	1-1/8"	3/8"	5/8"	3.2	67.75	28.75	12.25	180	193
GLD44A-140[]{ }	9.00	9.00	14,000	2,520	1/2"	1-1/8"	3/8"	5/8"	4	85.75	28.75	12.25	240	257
GLD54A-175[]{ }	9.00	9.00	17,500	3,150	1/2"	1-1/8"	3/8"	5/8"	4	103.75	28.75	12.25	280	302
GLD64A-210[]{ }	9.00	9.00	21,000	3,780	1/2"	1-1/8"	1/2"	5/8"	4.8	121.75	28.75	12.25	330	356

{ } Include motor code as either "D" for Dual Speed or "V" for Variable Speed EC motor to be used.
[] Location for the refrigerant letter code.

EXAMPLE FULL MODEL:

GHD34A-150CDA is DOE / NRCan with CO₂, Dual Speed EC motor and includes the additional letter A for 208 V single phase.



Krack evaporator capacities shown are with **midpoint** evaporating temperature to offer a consistent capacity for selection when using different refrigerants and match other Krack and Hussmann equipment.

GH/GL Series Unit Coolers

Electric Defrost Specifications - CO₂ Refrigerant

GENTLE AIR - 18" HIGH SILHOUETTE - MEDIUM TEMPERATURE - CO₂

MODEL	Cooler AWEF By Refrigerant and Motor		CAPACITY (BTU/H) @ 10° F TD +25° F EVAP	AIR FLOW (CFM)	REFRIGERATION CONNECTIONS				REF CHARGE (LB)	DIMENSIONS (IN)			SHIP WGT (LB)	
	Dual Speed	Variable Speed			C - CO ₂ (standard pressure)		H - CO ₂ (high pressure)			L	W	H	C - CO ₂ (std)	H - CO ₂ (high)
					LIQ	SUCT	LIQ	SUCT						
GHD16D-060[]	9.00	9.00	6,000	900	1/2"	7/8"	3/8"	5/8"	2.4	31.75	28.75	18.25	130	140
GHD26D-130[]	9.00	9.00	13,000	1,800	1/2"	7/8"	3/8"	5/8"	3.2	49.75	28.75	18.25	180	197
GHD36D-198[]	9.00	9.00	19,800	2,700	1/2"	1-1/8"	3/8"	5/8"	4.8	67.75	28.75	18.25	240	265
GHD46D-270[]	9.00	9.00	27,000	3,600	1/2"	1-1/8"	3/8"	5/8"	6.4	85.75	28.75	18.25	320	352
GHD56D-340[]	9.00	9.00	34,000	4,500	1/2"	1-1/8"	3/8"	5/8"	7.2	103.75	28.75	18.25	370	409
GHD66D-410[]	9.00	9.00	41,000	5,400	1/2"	1-1/8"	1/2"	5/8"	8.8	121.75	28.75	18.25	420	467
GHD14D-050[]	9.00	9.00	5,000	940	1/2"	7/8"	3/8"	5/8"	2.4	31.75	28.75	18.25	120	130
GHD24D-100[]	9.00	9.00	10,000	1,880	1/2"	7/8"	3/8"	5/8"	3.2	49.75	28.75	18.25	170	187
GHD34D-150[]	9.00	9.00	15,000	2,820	1/2"	1-1/8"	3/8"	5/8"	4.8	67.75	28.75	18.25	230	255
GHD44D-200[]	9.00	9.00	20,000	3,760	1/2"	1-1/8"	3/8"	5/8"	6.4	85.75	28.75	18.25	310	342
GHD54D-250[]	9.00	9.00	25,000	4,700	1/2"	1-1/8"	3/8"	5/8"	7.2	103.75	28.75	18.25	360	399
GHD64D-300[]	9.00	9.00	30,000	5,640	1/2"	1-1/8"	1/2"	5/8"	8.8	121.75	28.75	18.25	410	457

GENTLE AIR - 12" LOW SILHOUETTE - MEDIUM TEMPERATURE - CO₂

MODEL	Cooler AWEF By Refrigerant and Motor		CAPACITY (BTU/H) @ 10° F TD +25° F EVAP	AIR FLOW (CFM)	REFRIGERATION CONNECTIONS				REF CHARGE (LB)	DIMENSIONS (IN)			SHIP WGT (LB)	
	Dual Speed	Variable Speed			C - CO ₂ (standard pressure)		H - CO ₂ (high pressure)			L	W	H	C - CO ₂ (std)	H - CO ₂ (high)
					LIQ	SUCT	LIQ	SUCT						
GLD16D-045[]	9.00	9.00	4,500	600	1/2"	5/8"	3/8"	5/8"	1.6	31.75	28.75	12.25	100	105
GLD26D-090[]	9.00	9.00	9,000	1,200	1/2"	7/8"	3/8"	5/8"	2.4	49.75	28.75	12.25	140	149
GLD36D-135[]	9.00	9.00	13,500	1,800	1/2"	1-1/8"	3/8"	5/8"	3.2	67.75	28.75	12.25	190	203
GLD46D-180[]	9.00	9.00	18,000	2,400	1/2"	1-1/8"	3/8"	5/8"	4.0	85.75	28.75	12.25	250	267
GLD56D-225[]	9.00	9.00	22,500	3,000	1/2"	1-1/8"	3/8"	5/8"	4.0	103.75	28.75	12.25	290	312
GLD66D-268[]	9.00	9.00	26,800	3,600	1/2"	1-1/8"	1/2"	5/8"	4.8	121.75	28.75	12.25	340	366
GLD14D-035[]	9.00	9.00	3,500	630	1/2"	5/8"	3/8"	5/8"	1.6	31.75	28.75	12.25	90	95
GLD24D-070[]	9.00	9.00	7,000	1,260	1/2"	7/8"	3/8"	5/8"	2.4	49.75	28.75	12.25	130	139
GLD34D-105[]	9.00	9.00	10,500	1,890	1/2"	1-1/8"	3/8"	5/8"	3.2	67.75	28.75	12.25	180	193
GLD44D-140[]	9.00	9.00	14,000	2,520	1/2"	1-1/8"	3/8"	5/8"	4.0	85.75	28.75	12.25	240	257
GLD54D-175[]	9.00	9.00	17,500	3,150	1/2"	1-1/8"	3/8"	5/8"	4.0	103.75	28.75	12.25	280	302
GLD64D-210[]	9.00	9.00	21,000	3,780	1/2"	1-1/8"	1/2"	5/8"	4.8	121.75	28.75	12.25	330	356

{ } Include motor code as either "D" for Dual Speed or "V" for Variable Speed EC motor to be used.

[] Location for the refrigerant letter code.

E XAMPLE FULL MODEL:

GHD34D-105DAA is DDE / NRCan with CO₂, Dual Speed EC motor and includes the additional letter A for 208 V single phase fan power and K for 208/3/60 defrost.

Key Point -

Krack evaporator capacities shown are with **midpoint** evaporating temperature to offer a consistent capacity for selection when using different refrigerants and match other Krack and Hussmann equipment.

GH/GL Series Unit Coolers

Fan Motor Data

FAN MOTOR DATA								
GH MODEL	DUAL OR VARIABLE SPEED EC MOTORS				PSC MOTORS			
	115/1/60		208-230/1/60		115/1/60		208-230/1/60	
	AMPS	WATTS	AMPS	WATTS	AMPS	WATTS	AMPS	WATTS
1 FAN	0.9	52	0.6	48	0.6	67	0.3	66
2 FAN	1.8	104	1.2	96	1.2	134	0.6	132
3 FAN	2.7	156	1.8	144	1.8	201	0.9	198
4 FAN	3.6	208	2.4	192	2.4	268	1.2	264
5 FAN	4.5	260	3.0	240	3.0	335	1.5	330
6 FAN	5.4	312	3.6	288	3.6	402	1.8	396

GL MODEL	DUAL OR VARIABLE SPEED EC MOTORS				PSC MOTORS			
	115/1/60		208-230/1/60		115/1/60		208-230/1/60	
	AMPS	WATTS	AMPS	WATTS	AMPS	WATTS	AMPS	WATTS
1 FAN	0.9	18	0.6	19	0.6	43	0.3	41
2 FAN	1.8	36	1.2	38	1.2	86	0.6	82
3 FAN	2.7	54	1.8	57	1.8	129	0.9	123
4 FAN	3.6	72	2.4	76	2.4	172	1.2	164
5 FAN	4.5	90	3.0	95	3.0	215	1.5	205
6 FAN	5.4	108	3.6	114	3.6	258	1.8	246

Dual or Variable Speed EC Motors are motor codes "D" and "V". PSC Motors are motor code "B".
Refer to complete Model Key on page 8.

Key Point -

Dual Speed fan motors use a voltage input from the incoming fan power to a third connection on the motor to trigger low speed operation.
Variable Speed EC need a 0-10 V signal with 10 V as minimum speed operation. Both motor types operate as a single speed EC motor without a control signal.

Electric Defrost and Pan Heater Data

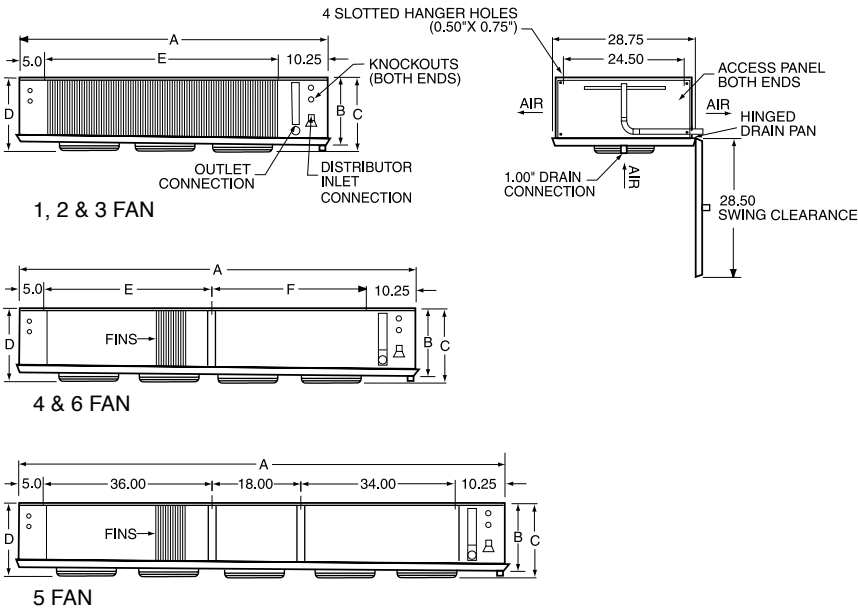
ELECTRIC DEFROST AND PAN HEATER DATA								
GH MODEL	ELECTRIC DEFROST				DRAIN PAN HEATER			
	230/1/60		230/3/60		115/1/60		230/1/60	
	AMPS	WATTS	AMPS	WATTS	AMPS	WATTS	AMPS	WATTS
1 FAN	7.0	1600	4.6	1600	3.5	400	1.7	400
2 FAN	13.9	3200	9.2	3200	5.2	600	2.6	600
3 FAN	20.9	4800	13.8	4800	7.0	800	3.5	800
4 FAN	27.8	6400	18.4	6400	8.7	1000	4.3	1000
5 FAN	34.8	8000	23.0	8000	10.4	1200	5.2	1200
6 FAN	41.7	9600	27.6	9600	12.2	1400	6.1	1400

GL MODEL	ELECTRIC DEFROST				DRAIN PAN HEATER			
	230/1/60		230/3/60		115/1/60		230/1/60	
	AMPS	WATTS	AMPS	WATTS	AMPS	WATTS	AMPS	WATTS
1 FAN	3.5	800	3.0	800	3.5	400	1.7	400
2 FAN	7.0	1600	6.0	1600	5.2	600	2.6	600
3 FAN	10.4	2400	9.0	2400	7.0	800	3.5	800
4 FAN	13.9	3200	12.0	3200	8.7	1000	4.3	1000
5 FAN	17.4	4000	15.1	4000	10.4	1200	5.2	1200
6 FAN	20.9	4800	18.1	4800	12.2	1400	6.1	1400

Electrical information for electric defrost type "D". Electrical information for pan heaters on defrost type "P" and "H".
Refer to complete Model Key on page 8.

GH/GL Series Unit Coolers

Dimensional Data



UNIT DIMENSIONS

SIZE	A	B	C	D	E	F
GH-1 FAN	31.75	16.50	18.25	17.38	16.00	-
GH-2 FAN	49.75	16.50	18.25	17.38	34.00	-
GH-3 FAN	67.75	16.50	18.25	17.38	52.00	-
GH-4 FAN	85.75	16.50	18.28	17.38	36.00	34.00
GH-5 FAN	103.75	16.50	18.25	17.38	-	-
GH-6 FAN	121.75	16.50	18.25	17.38	54.00	52.00
GL-1 FAN	31.75	10.50	12.25	11.38	16.00	-
GL-2 FAN	49.75	10.50	12.25	11.38	34.00	-
GL-3 FAN	67.75	10.50	12.25	11.38	52.00	-
GL-4 FAN	85.75	10.50	12.25	11.38	36.00	34.00
GL-5 FAN	103.75	10.50	12.25	11.38	-	-
GL-6 FAN	121.75	10.50	12.25	11.38	54.00	52.00

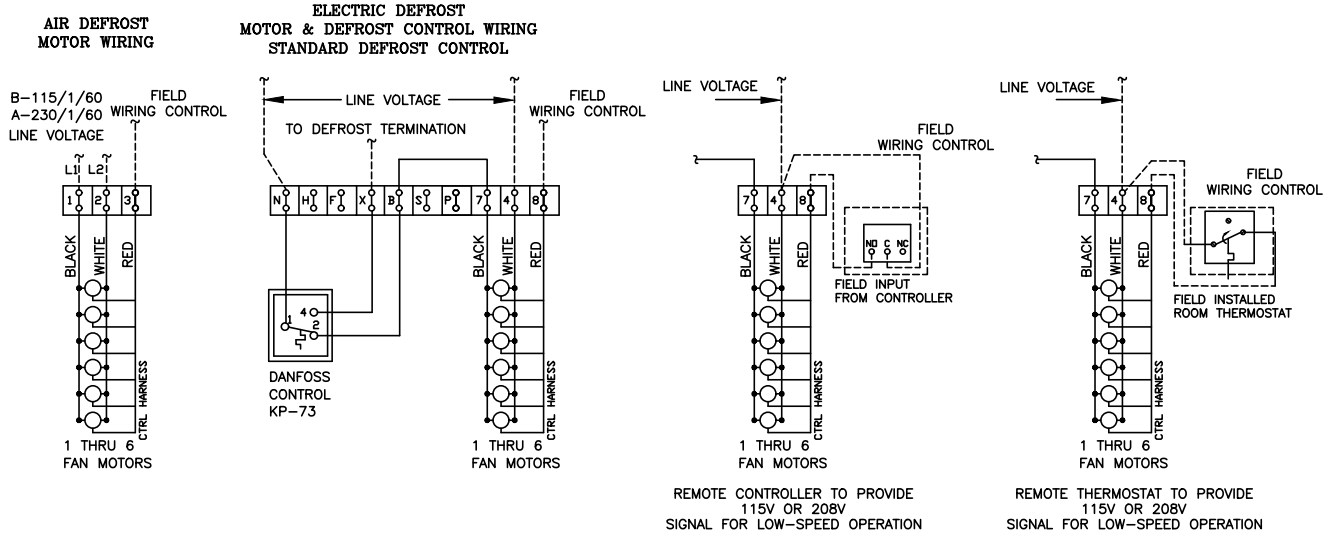
Note: Dimensions in inches.

LH and GH/GL Series Unit Coolers

Wiring Diagrams

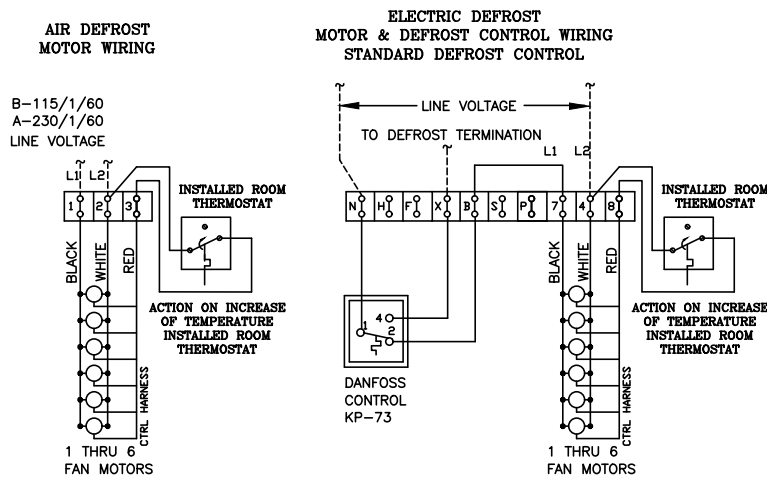
Dual Speed EC Motor Wiring - Motor Code D

Remote thermostat or controller would use incoming fan power as source for the 115 V or 208 V voltage signal for low speed operation.



Dual Speed EC Motor Wiring - Motor Code D

Factory-installed thermostat uses incoming fan power as voltage signal for low speed operation.

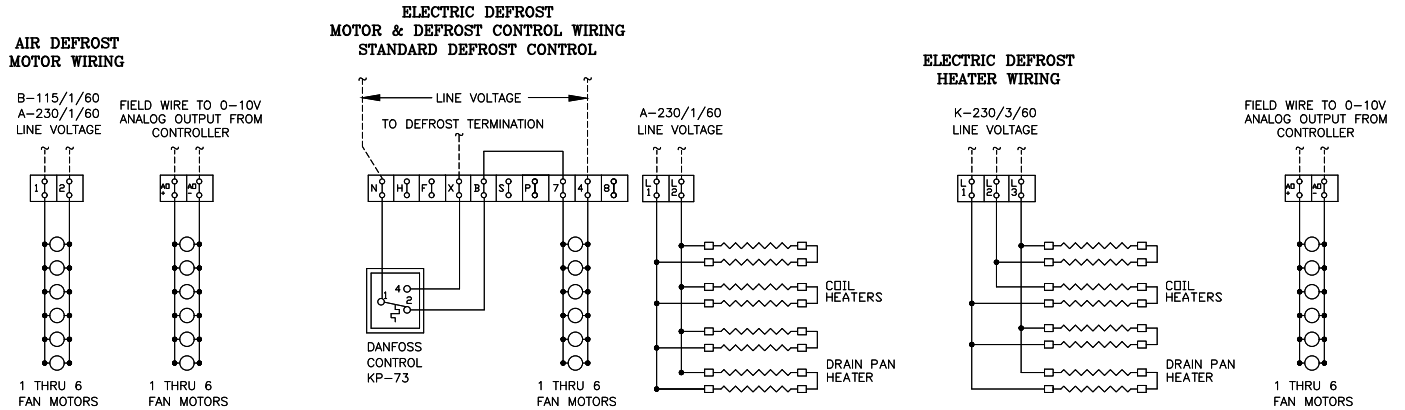


LH and GH/GL Series Unit Coolers

Wiring Diagrams

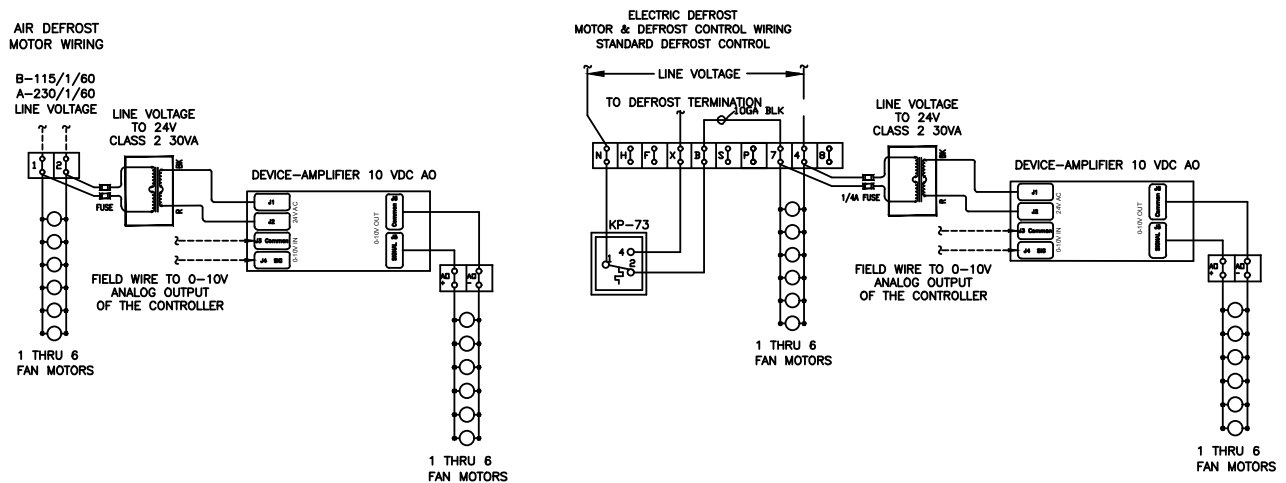
Variable Speed EC Motor Wiring - Motor Code V

Field supplied 0-10 V signal must provide 20 mA per motor or use amplifier on each evaporator. Default operation is full speed with 0V or no signal.



Variable Speed EC Motor Wiring - Motor Code V

Remote 0-10 V signal connected to signal amplifier in the panel enabling variable speed operation.



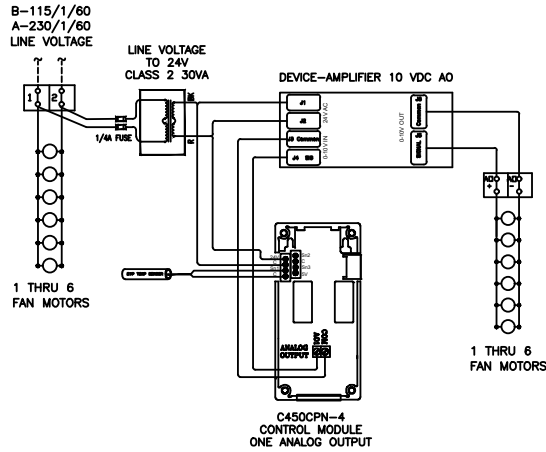
LH and GH/GL Series Unit Coolers

Wiring Diagrams

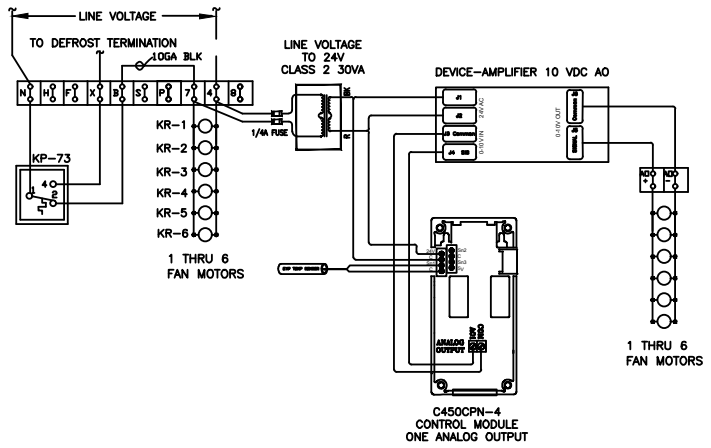
Variable Speed EC Motor Wiring - Motor Code V

Installed system 450 controller in the evaporator enabling variable speed operation.

AIR DEFROST MOTOR WIRING



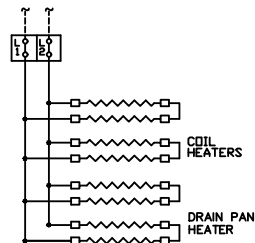
ELECTRIC DEFROST MOTOR & DEFROST CONTROL WIRING STANDARD DEFROST CONTROL



Heater Defrost Motor Wiring

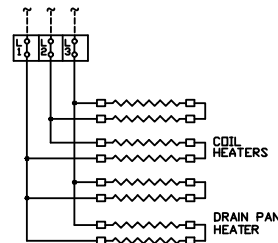
Defrost coil and drain pan heater wiring.

A-230/1/60 LINE VOLTAGE



ELECTRIC DEFROST HEATER WIRING

K-230/3/60 LINE VOLTAGE

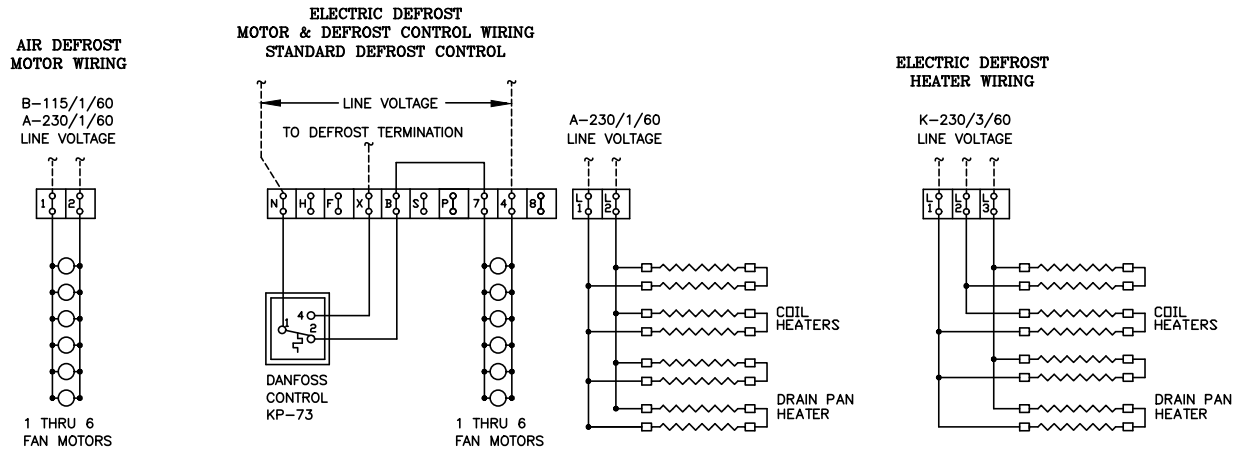


LH and GH/GL Series Unit Coolers

Wiring Diagrams

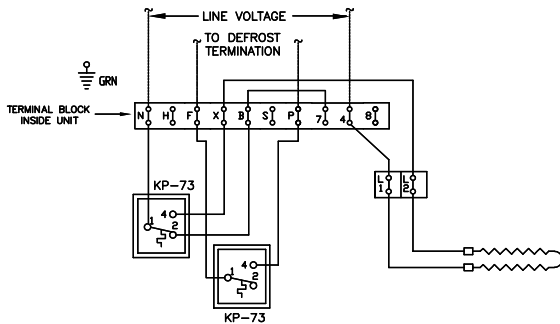
Single Speed PSC Motor Wiring - Motor Code B

Basic wiring with no speed control.

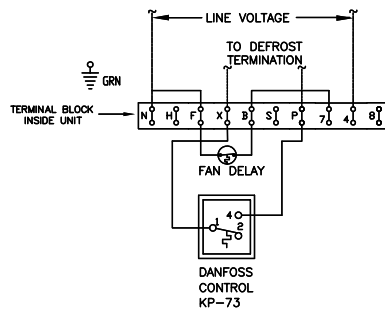


GH/GL Gas Defrost Setup

H and P Defrost Control Wiring - Gas Defrost with Electric Drain Pan Heater



F and M Defrost Control Wiring - Gas Defrost with No Drain Pan Heater





Use your QR reader to
reference current document
version on www.krack.com.



Krack, a Hussmann Corporation brand

For all customers inquiries,
visit www.krack.com or call 800.922.1919.

www.krack.com
www.hussmann.com