



OPTIMIZE YOUR STORE DESIGN

HE H-Series

WITH CAPACITY MODULATION

High Efficiency (HE) H-Series condensing units with capacity modulation technology provides energy efficiency with refrigeration load flexibility to optimize refrigeration designs. This unique solution allows variation in refrigeration loads and defrost schedules to be combined on one unit. Load matching from 20-100%, on-board diagnostics, and flood-back prevention with superheat alarm come standard.

Capacity Modulation Technology provides:

- Wide range of display case options utilizing a single condensing unit with either remote defrost panel or case controller (remote panel required for low temp if no case controller available)
- Multiple evaporator options for walk-in coolers and freezers
- Application solutions for refrigerated meat prep, aging areas, or walk-in boxes

Energy-efficient condensing unit solution designed with **adaptive technology** to refrigerate a variety of case and evaporator models.



Shown:
Excel **P4X-EP** Multi-Deck Merchandiser



Shown:
Excel **D5X** Multi-Deck Merchandisers



Shown:
KR Series Compact Unit Coolers

One system for combination of equipment solutions!

Capacity Modulation Technology is ideal for:

- Large Convenience Stores
- Supermarkets
- Restaurants
- Micro-Fulfillment Centers
- Market-Fulfillment Centers
- Light Industrial

Krack® HE H-Series with Capacity Modulation

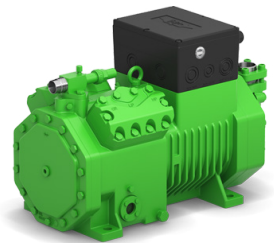
Capacity modulation provides a broad range of solutions for components including compressor options with Copeland digital scrolls (up to 15 HP - medium temp), digital discus (up to 15 HP medium temp; 22 HP low temp) as well as Bitzer ECOLINE vari-unloader compressors (up to 16 HP for medium and low temp). See solution guide below for available combinations.

Features and Benefits:

- Load matching from 20 to 100%
- Available with Copeland (Discus and Scroll) and Bitzer ECOLINE (Motor 1 and 2) compressors
- Multiple control options available including Hussmann's CoreLink™, Copeland's Dixell, and KE2 that control both the compressor and condenser fans
- Modules included based on motor type to control capacity
- Condenser EC fan motors
- Head pressure control and linear power reduction
- Communication to store and connectivity to facility management systems with alarm outputs
- Optional over / under voltage protection
- Digital fault code displays with Hussmann CoreLink
- Floodback prevention as superheat alarm is generated
- 208 or 460 voltage, 3-phase, and 60 Hz available



Shown:
Hussmann CoreLink™
Controller



Shown:
Bitzer ECOLINE Series
Compressor



Shown:
Hussmann CoreLink™
Control Interface

AVAILABLE SOLUTIONS	COMPRESSOR SOLUTIONS							
	COPELAND SCROLL		COPELAND DISCUS		BITZER RECIPROCATING (Motor 1) ²		BITZER RECIPROCATING (Motor 2) ²	
	MT	LT	MT	LT	MT	LT	MT	LT
Capacity Modulation	✓		✓	✓	✓		✓	✓
Compressor Type								
Fixed					✓ ○		✓ ○	✓ ○
Digital	✓ ●		✓	✓				
Variable								
Controls								
Hussmann CoreLink™	✓		✓	✓	✓		✓	✓
Dixell XCM25D	✓							
KE2	✓		✓	✓	✓		✓	✓
Modules Included								
Copeland IDCM	✓ *		✓	✓				
Copeland CoreSense™	✓ ●							
Bitzer CMRC-R (Motor 1)					✓ ○			
Bitzer CMRC-T (Motor 2)							✓ ○	✓ ○
Condenser EC Fans	✓		✓	✓	✓		✓	✓
Horsepower ¹	3, 4, 5, 6, 7.5, 10 ●, 15 ●		7.5, 10, 12, 15	6, 7.5, 9, 10, 15, 22	4, 5, 6, 6.5, 7, 9, 10		4, 5, 6, 6.5, 7, 9, 10, 12, 14, 16	4, 5, 6, 6.5, 7, 9, 10, 12, 14, 16
Electrical								
208V / 3 Ph / 60 Hz	✓		✓	✓	✓		✓	✓
460V / 3 Ph / 60 Hz	✓		✓	✓	✓		✓	✓

* Not required if paired with Dixell XCM25D controller.

- 10 and 15 HP K5E scrolls come equipped with a CoreSense diagnostic module which controls capacity modulation (IDCM module not required).
- Leveraging Bitzer CMRC-R and T modules converts Bitzer compressors from fixed to digital providing mechanical capacity control.

¹ Capacity ranges can be found through the standard upgradeable HE H-Series options in both the condensing unit technical bulletin and the Krack price sheet.

² The difference between Bitzer Motor 1 and 2 is Motor 1 has a higher suction temperature while Motor 2 has a lower suction temperature.



Scan the QR code to access technical data on krack.com.

NOTE: We reserve the right to change or revise specifications and product design in connection with any feature of our products. Such changes do not entitle the buyer to corresponding changes, improvements, additions, or replacements for equipment previously sold or shipped.



Krack, a Hussmann Corporation brand

For all customers inquiries, visit www.krack.com or call 800.922.1919

www.krack.com
www.hussmann.com