

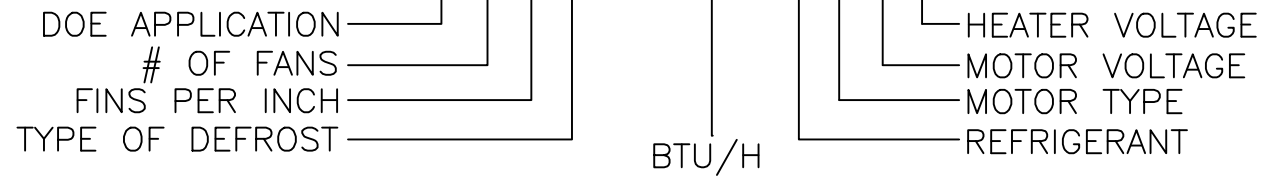
MOTOR TYPE & VOLTAGE AMP CHART

MODEL	D-EC MTR		V-EC MTR		B-PSC		MOP
	B VOLTAGE	A VOLTAGE	B VOLTAGE	A VOLTAGE	B VOLTAGE	A VOLTAGE	
	115/1/60	230/1/60	115/1/60	230/1/60	115/1/60	230/1/60	
	1/20 HP	1/20 HP	1/20 HP	1/20 HP	1/23 HP	1/23 HP	
	0.9 FLA	0.6 FLA	0.9 FLA	0.6 FLA	0.6 FLA	0.3 FLA	
MODEL	MCA	MCA	MCA	MCA	MCA	MCA	MOP
GH-1	1.13	0.75	1.13	0.75	0.75	0.38	15
GH-2	2.03	1.35	2.03	1.35	1.35	0.68	15
GH-3	2.93	1.95	2.93	1.95	1.95	0.98	15
GH-4	3.83	2.55	3.83	2.55	2.55	1.28	15
GH-5	4.73	3.15	4.73	3.15	3.15	1.58	15
GH-6	5.63	3.75	5.63	3.75	3.75	1.88	15

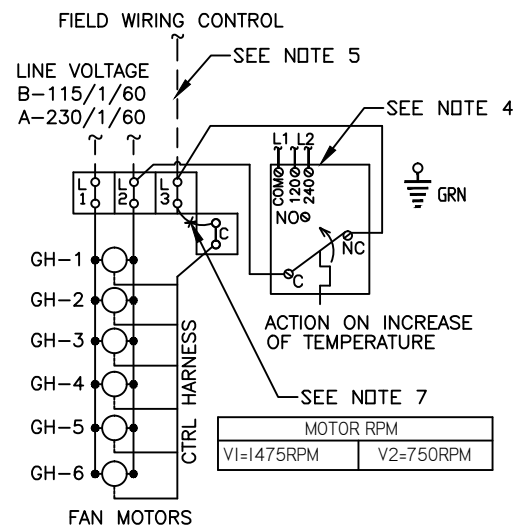
MCA = FLA * 1.25 + SUM OF REMAINING FLA'S

NOMENCLATURE LEGEND

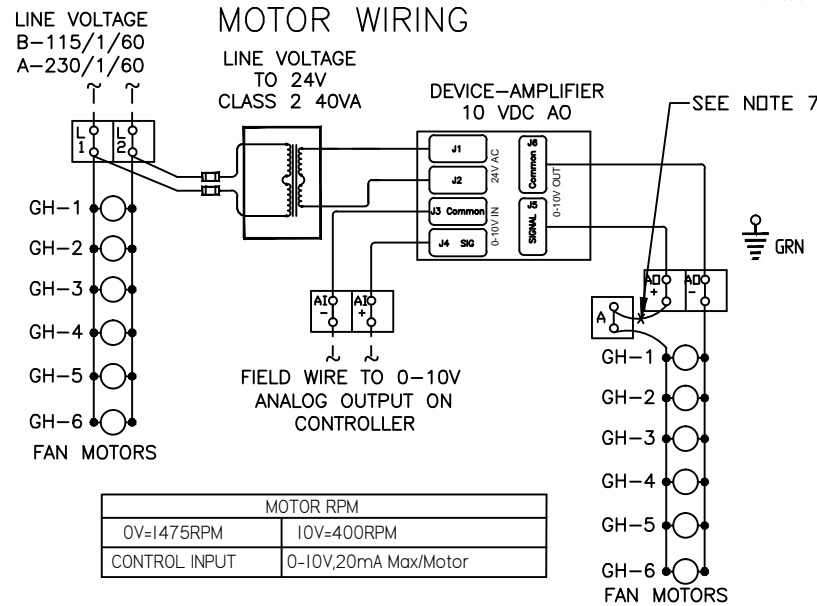
GHD66D-410SDAK



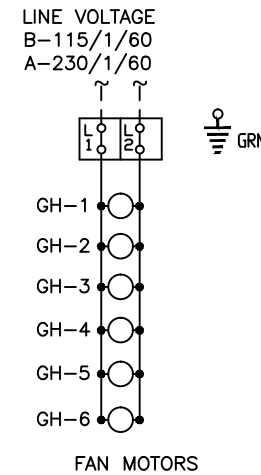
AIR DEFROST - D/2-SPEED MOTOR WIRING



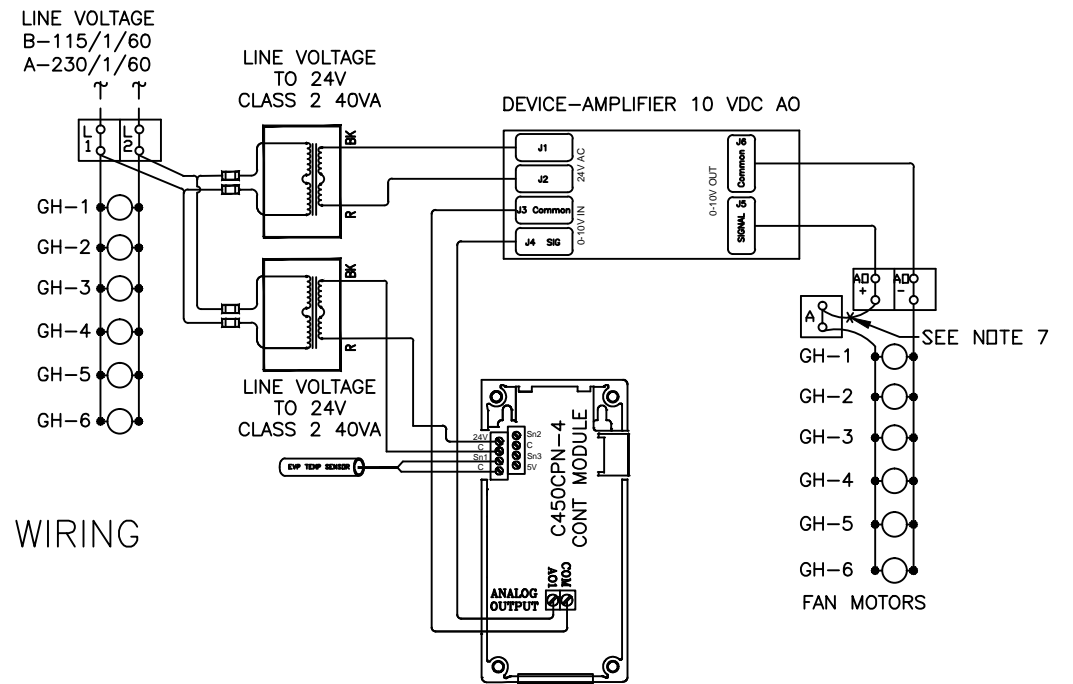
AIR DEFROST - V/VARIABLE SPEED MOTOR WIRING



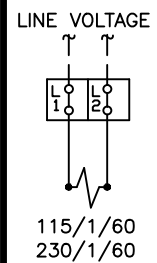
AIR DEFROST - B/PSC MOTOR WIRING



AIR DEFROST - V/VARIABLE SPEED MOTOR WITH SYSTEM 450 CONTROL

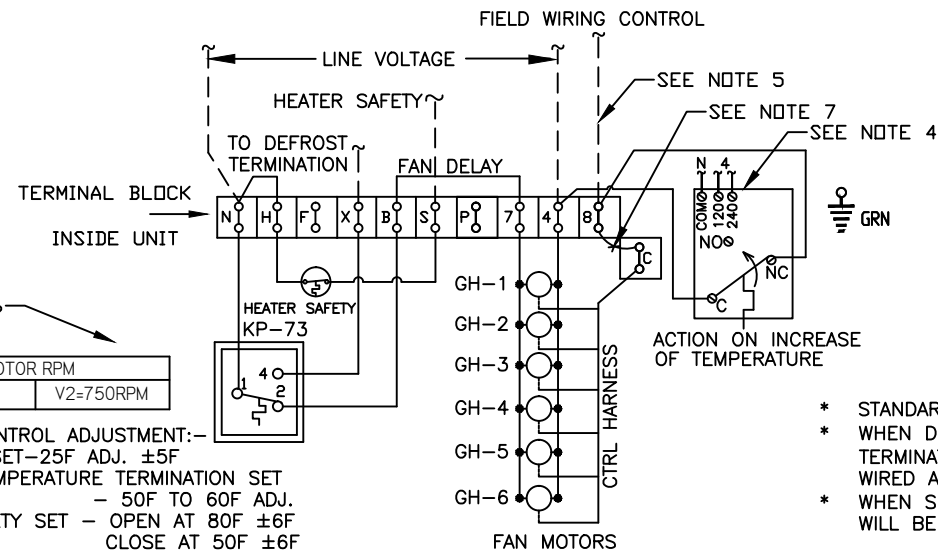


OPTIONAL MOUNTED SOLENOID



ELECTRIC DEFROST - D/2-SPEED MOTOR & DEFROST CONTROL WIRING

STANDARD DEFROST CONTROL



DEFROST CONTROL ADJUSTMENT:-
 FAN DELAY SET-25F ADJ. ±5F
 DEFROST TEMPERATURE TERMINATION SET - 50F TO 60F ADJ.
 HEATER SAFETY SET - OPEN AT 80F ±6F
 CLOSE AT 50F ±6F

- * STANDARD DEFROST TERMINATION SETUP IS SHOWN.
- * WHEN DRY CONTACT DEFROST TERMINATION CALLED IN KP73 (DEFROST TERMINATION), KLIXON (HEATER SAFETY) AND KLIXON (FAN DELAY) WILL BE WIRED AS SHOWN IN PAGE 3
- * WHEN SENSOR FOR DEFROST TERMINATION CALLED IN KLIXON(FAN DELAY) WILL BE WIRED AS SHOWN IN PAGE 3

C	UPDATED WITH SENSOR DEFROST TERMINATION	14/06/22	POORNA
B	ADDED VS & DUAL OPTION	09/11/20	POORNA
NO.	CHANGE DESCRIPTION	DATE	CK'D

JOB NO.:

CUSTOMER P.O.:

MODEL: GA SERIES UNIT COOLER

ITEM NO.: GH_DIAG

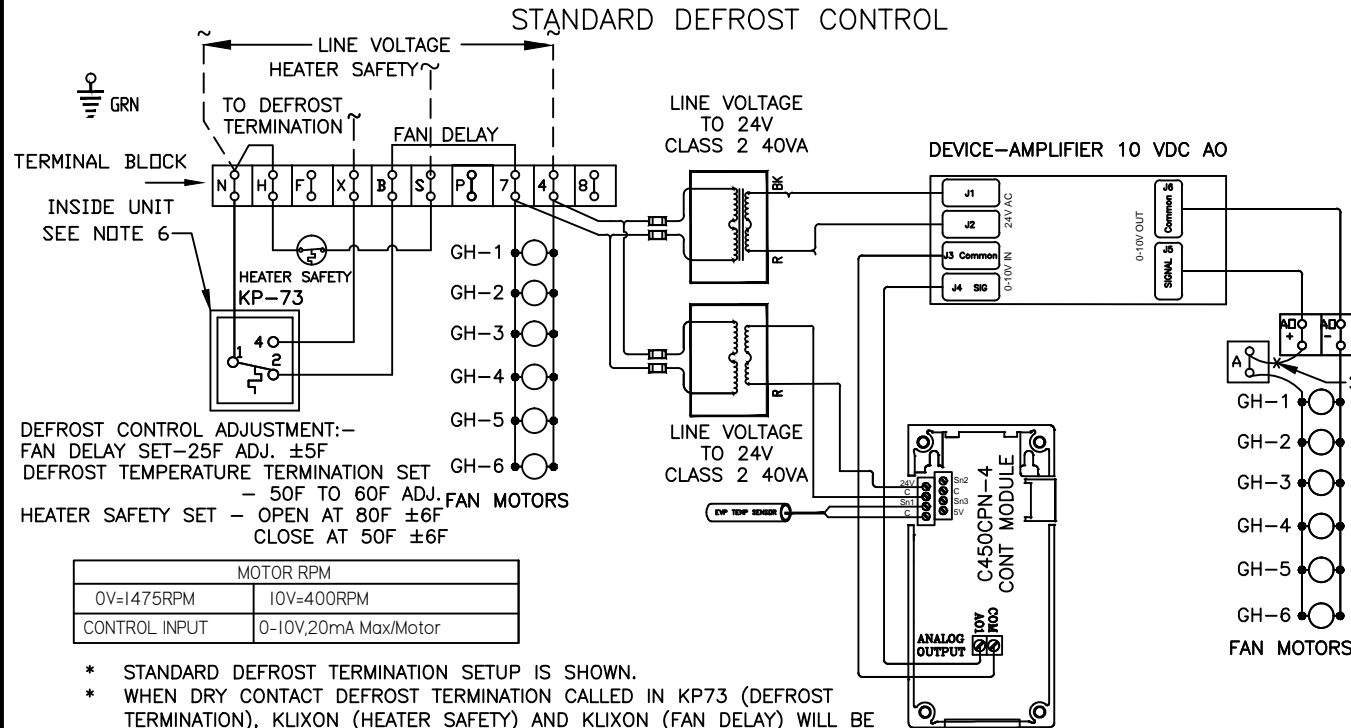
NO. REQ'D: SHEET 1 OF 4

TOLERANCE: ±

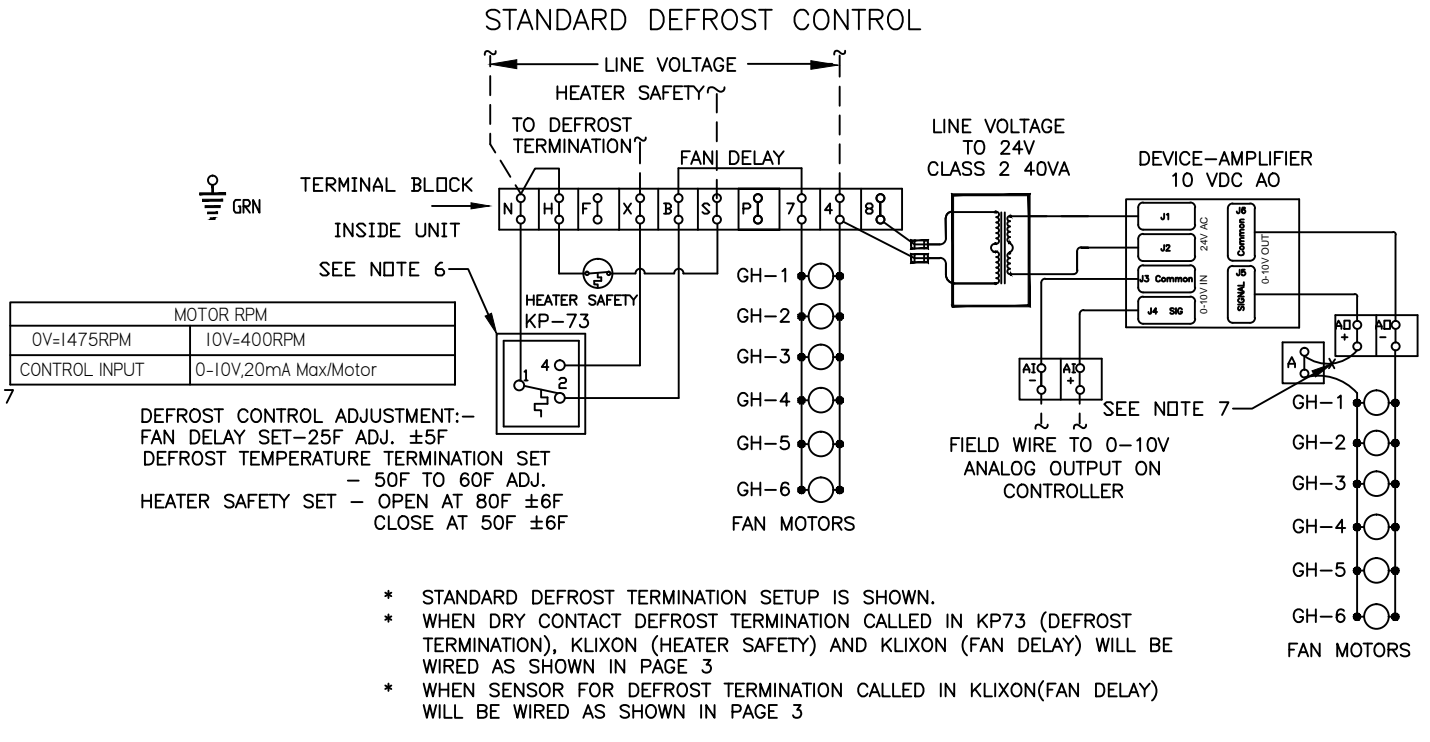
DATE: 04/22/2020

KRACK HUSSMANN CORPORATION

ELECTRIC DEFROST – V/VARIABLE SPEED MOTOR & DEFROST CONTROL WIRING WITH SYSTEM 450 CONTROL

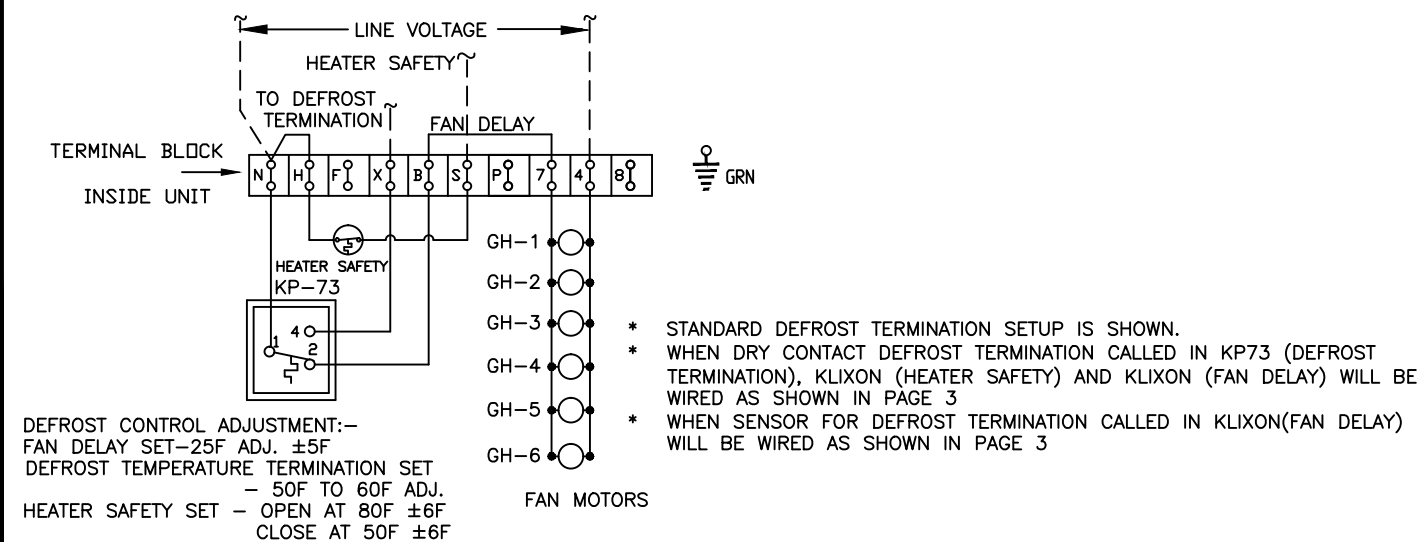


ELECTRIC DEFROST – V/VARIABLE SPEED MOTOR & DEFROST CONTROL WIRING WITH FIELD CONTROL



EVP COIL PARAMETER SETTING																
Output Relays		Sensor Type		Sensor Assignment		Setpoint Selection		End Point Selection		Output Signal Strength at Setpoint		Output Signal Strength at End Point		Sensor Failure Mode		
Output Relays	System 450 LCD Screen display.	Relay Description	Sensor Type LCD Screen display.	Sensor Type Setting	System 450 LCD Screen display.	Sensor Name	System 450 LCD Screen display.	Temp. Setting	System 450 LCD Screen display.	Temp. Setting	System 450 LCD Screen display.	Output Signal Strength	System 450 LCD Screen display.	Output Signal Strength	System 450 LCD Screen display.	Output relay Status
Analog Output #1	OUTA ¹	Evp Motor Analog Signal	Sn-1	*F	SENS ¹	Sn-1	SP ¹	BOX TEMP	EP ¹	BOX TEMP - 5	OSP ¹	0%	OEP ¹	100%	SNF ¹	OFF

ELECTRIC DEFROST – B/PSC MOTOR & DEFROST CONTROL WIRING

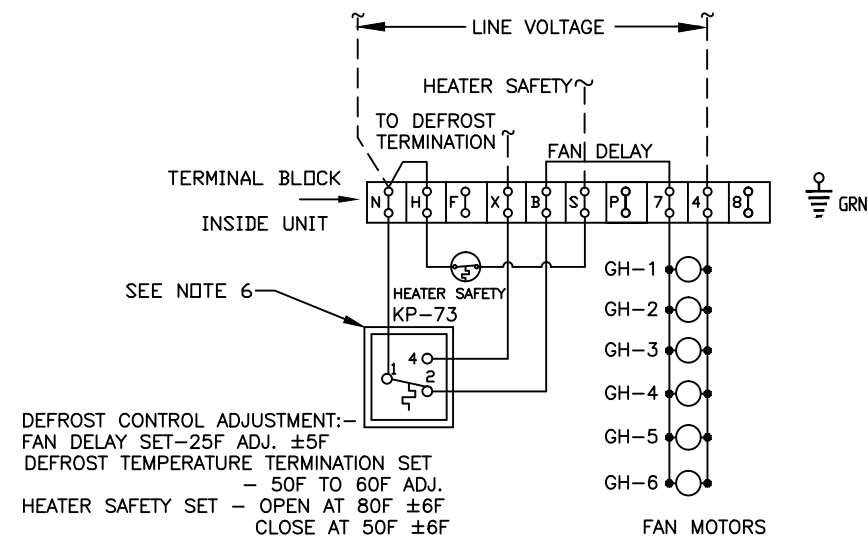


C	UPDATED WITH SENSOR DEFROST TERMINATION	14/06/22	POORNA
B	ADDED VS & DUAL OPTION	09/11/20	POORNA
NO.	CHANGE DESCRIPTION	DATE	CK'D

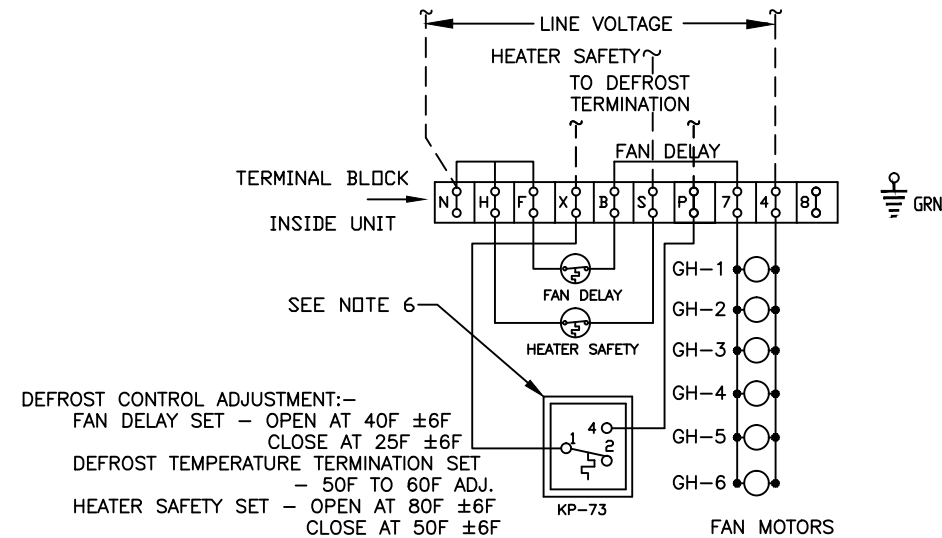
JOB NO.:
 CUSTOMER P.O.:
 MODEL: GA SERIES UNIT COOLER
 ITEM NO.: GH_DIAG
 NO. REQ'D: SHEET 2 OF 4 TOLERANCE: ±
 DATE: 04/22/2020
KRACK HUSSMANN CORPORATION

ELECTRIC DEFROST – DEFROST CONTROL WIRING

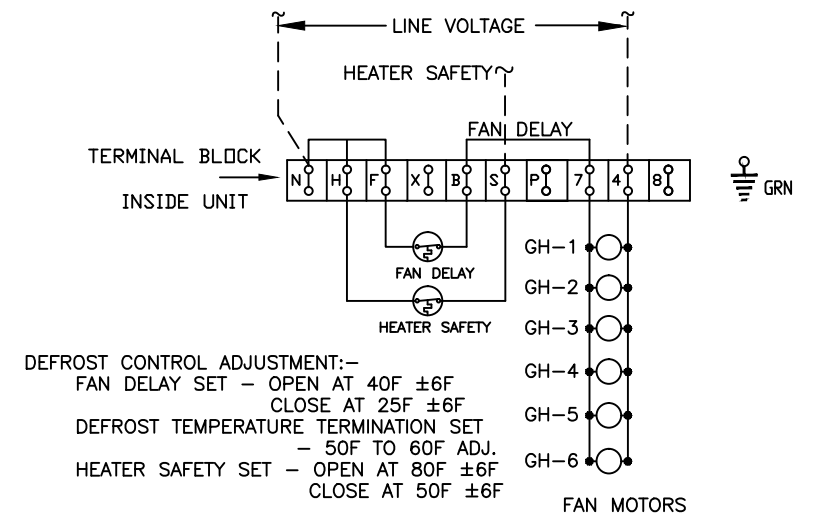
STANDARD DEFROST CONTROL



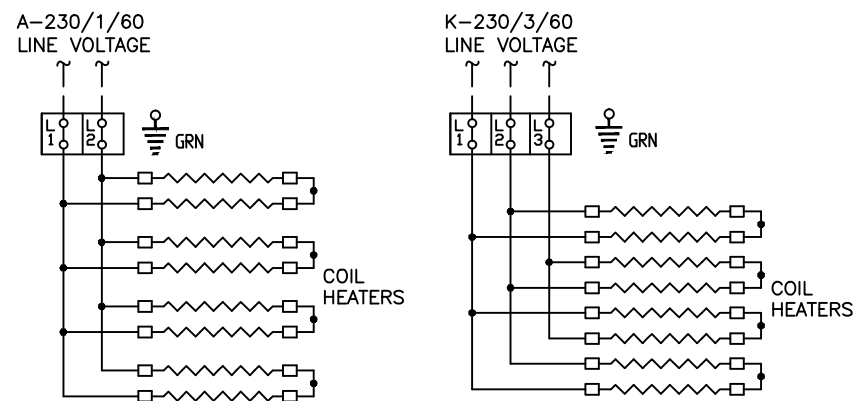
OPTIONAL DEFROST CONTROL DRY CONTACT DEFROST TERMINATION



OPTIONAL DEFROST CONTROL WITH DEFROST SENSOR TERMINATION



ELECTRIC DEFROST HEATER WIRING



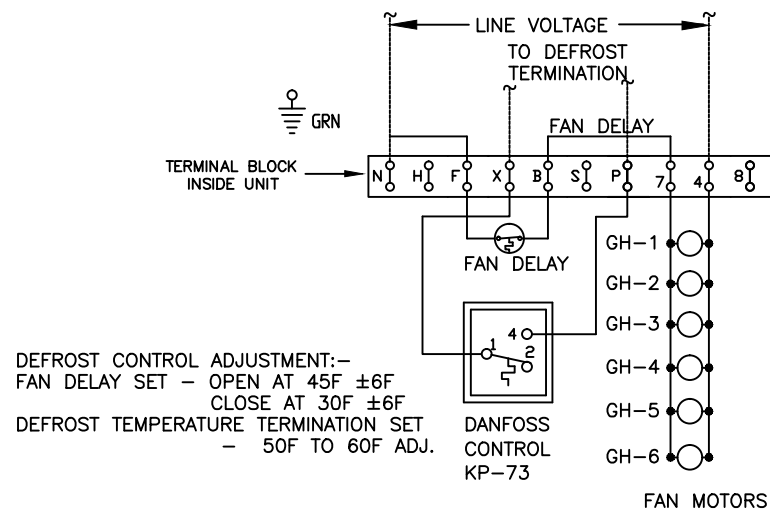
HEATER VOLTAGE AMP CHART

MODEL	WATTS	A VOLTAGE		K VOLTAGE	
		230/1/60	230/3/60	230/1/60	230/3/60
GH-1	1600	7.0	4.6	15	15
GH-2	3200	13.9	9.2	20	15
GH-3	4800	20.9	13.8	30	20
GH-4	6400	27.8	18.4	35	25
GH-5	8000	34.8	23.0	45	30
GH-6	9600	41.7	27.6	60	35

C	UPDATED WITH SENSOR DEFROST TERMINATION	14/06/22	POORNA
B	ADDED VS & DUAL OPTION	09/11/20	POORNA
NO.	CHANGE DESCRIPTION	DATE	CK'D

JOB NO.:
 CUSTOMER P.O.:
 MODEL: GA SERIES UNIT COOLER
 ITEM NO.: GH_DIAG
 NO. REQ'D: SHEET 3 OF 4 TOLERANCE: ±
 DATE: 04/22/2020
KRACK HUSSMANN CORPORATION

F & M DEFROST CONTROL WIRING – GAS DEFROST WITH NO DRAIN PAN HEATER

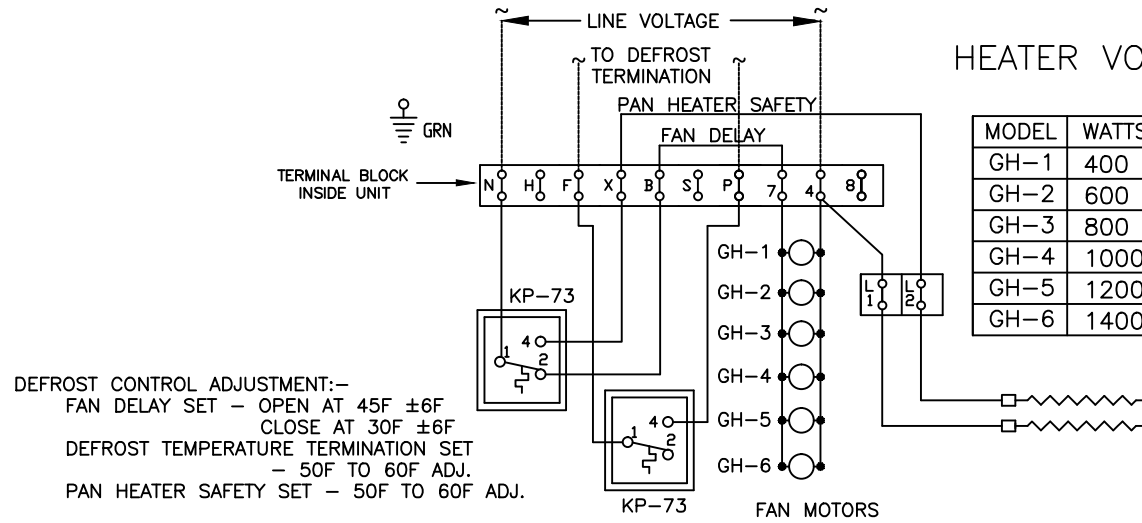


DEFROST CONTROL ADJUSTMENT:-
 FAN DELAY SET – OPEN AT 45F ±6F
 CLOSE AT 30F ±6F
 DEFROST TEMPERATURE TERMINATION SET
 – 50F TO 60F ADJ.

DANFOSS CONTROL KP-73

FAN MOTORS

H & P DEFROST CONTROL WIRING – GAS DEFROST WITH ELECTRIC DRAIN PAN HEATER



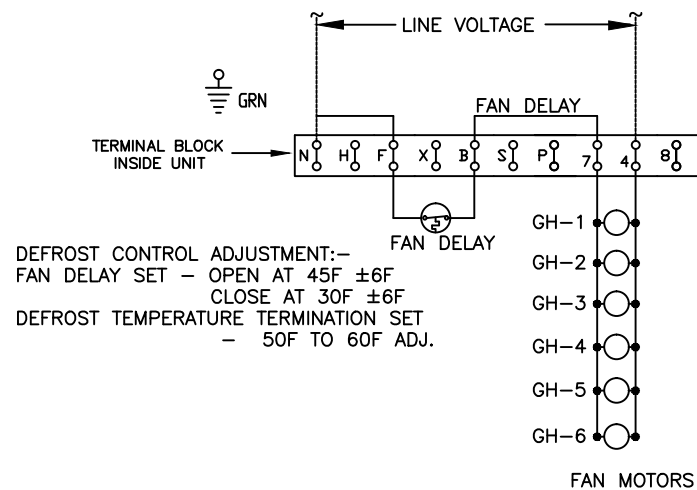
DEFROST CONTROL ADJUSTMENT:-
 FAN DELAY SET – OPEN AT 45F ±6F
 CLOSE AT 30F ±6F
 DEFROST TEMPERATURE TERMINATION SET
 – 50F TO 60F ADJ.
 PAN HEATER SAFETY SET – 50F TO 60F ADJ.

FAN MOTORS

HEATER VOLTAGE AMP CHART

MODEL	WATTS	A VOLTAGE		B VOLTAGE	
		230/1/60	115/1/60	230/1/60	115/1/60
GH-1	400	1.7	3.5	15	15
GH-2	600	2.6	5.2	15	15
GH-3	800	3.5	7.0	15	15
GH-4	1000	4.3	8.7	15	15
GH-5	1200	5.2	10.4	15	15
GH-6	1400	6.1	12.2	15	20

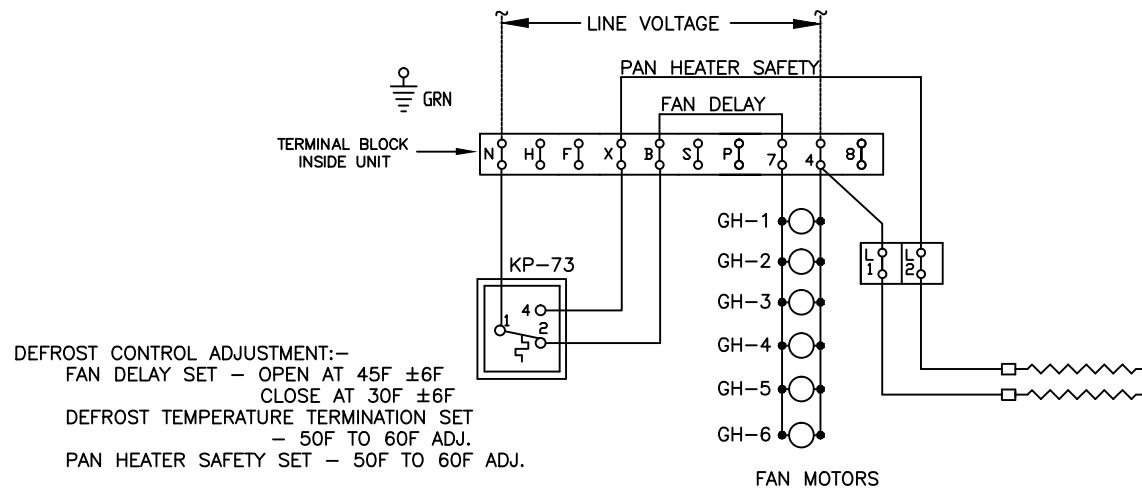
F & M DEFROST CONTROL WIRING – GAS DEFROST WITH NO DRAIN PAN HEATER WITH DEFROST SENSOR TERMINATION



DEFROST CONTROL ADJUSTMENT:-
 FAN DELAY SET – OPEN AT 45F ±6F
 CLOSE AT 30F ±6F
 DEFROST TEMPERATURE TERMINATION SET
 – 50F TO 60F ADJ.

FAN MOTORS

H & P DEFROST CONTROL WIRING – GAS DEFROST WITH ELECTRIC DRAIN PAN HEATER WITH DEFROST SENSOR



DEFROST CONTROL ADJUSTMENT:-
 FAN DELAY SET – OPEN AT 45F ±6F
 CLOSE AT 30F ±6F
 DEFROST TEMPERATURE TERMINATION SET
 – 50F TO 60F ADJ.
 PAN HEATER SAFETY SET – 50F TO 60F ADJ.

FAN MOTORS

NOTES::

- MOTORS IN COLD ROOMS MAY DRAW GREATER THAN NAMEPLATE AMPERAGE DUE TO HIGHER DENSITY OF COLD AIR.
- MOTORS HAVE AUTOMATIC RESET THERMAL OVERLOAD PROTECTION AND PRIMARY SINGLE PHASE PROTECTION.
- FIELD WIRING
 _____ FACTORY WIRING
- OPTIONAL FACTORY MOUNTED THERMOSTAT FOR 2 SPEED APPLICATION
- TERMINAL TO BE CONNECTED FOR 2 SPEED APPLICATION ONLY WHEN CONTROLLED BY FIELD CONTROLLER
- ALL DOE UNIT COME WITH KP73 DEFROST CONTROL MODULE
- WHEN USING THE COIL WITH SINGLE COMPRESSOR UNIT, REMOVE THE JUMPER AND WIRE FROM COMPRESSOR AUX CONTACT FROM CONDENSING UNIT

NOTE 4 :-
 DUAL SPEED THERMOSTAT SETPOINT CHART

STEP	ANNUNCIATOR	DESCRIPTION	DISPLAY
1	F OR C	FAHRENHEIT / CELSIUS SCALE	F
2	S1	SETPOINT TEMPERATURE	BOX TEMP
3	DIF 1	DIFFERENTIAL TEMPERATURE	5
4	C1/H1	COOLING OR HEATING MODE	C1
5	D1	COOLING DELAY	1

JOB NO.:			
CUSTOMER P.O.:			
MODEL:	GA SERIES UNIT COOLER		
ITEM NO.:	GH_DIAG		
NO. REQ'D:	4 OF 4	DATE:	04/22/2020
TOLERANCE:	±	KRACK HUSSMANN CORPORATION	

C	UPDATED WITH SENSOR DEFROST TERMINATION	14/06/22	POORNA
B	ADDED VS & DUAL OPTION	09/11/20	POORNA
NO.	CHANGE DESCRIPTION	DATE	CK'D