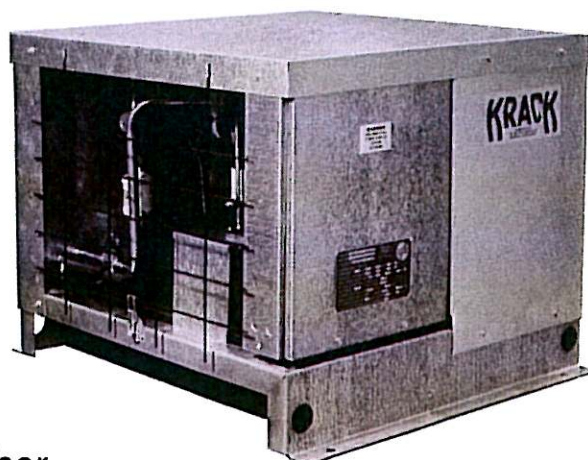
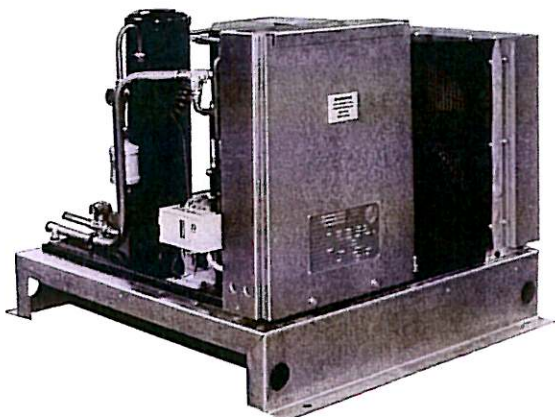


# KRACK

## HU/SU Air Cooled Condensing Units— $\frac{3}{4}$ to 5 HP



*Compact, Low Profile Indoor and Outdoor Condensing Units with  $\frac{3}{4}$  to 5 HP Semi-Hermetic and Hermetic Compressors for Medium R-22 and Low Temperature R-502 Applications.*

It's the kind of quality and dependability you expect from Krack for cooler and freezer applications in the food service industry. Our HU/SU Series air cooled condensers are available in semi-hermetic and hermetic models—all pre-assembled, pre-piped and factory wired for easy, low cost installation. Low profile design facilitates placement of the unit, intelligent piping arrangement provides easy access for service.

**Features:**

- Outdoor and indoor models with all-weather patterned aluminum housings
- Semi-hermetic or hermetic compressors
- High efficiency staggered tube copper/aluminum condenser

- Suction/discharge vibration eliminators (semi-hermetic)
- Compressor contactor
- Oversized receiver with liquid shut off valve, fusible plug, charging port
- High-low pressure control
- Crankcase heater
- Adjustable modulating by-pass valve
- Liquid line sight glass and dryer
- Suction line filter
- U.L. Listed

**Optional Accessories**

- Fused disconnect switch
- Defrost clock, heater contactor
- Room temperature control



*Specifications subject to change without notice*

# SPECIFICATIONS & DIMENSIONS

## 3/4 to 2 HP

### HERMETIC MEDIUM TEMPERATURE

| KRACK MODEL   | COMPRESSOR    | POWER SUPPLY | ELECTRICAL DATA |     |          |      | RECEIVER @ 90% | CONNECTIONS |         |       | CAPACITY BTUH @ 95° AMBIENT |       |       |       |      |      |      |      |      |      |
|---------------|---------------|--------------|-----------------|-----|----------|------|----------------|-------------|---------|-------|-----------------------------|-------|-------|-------|------|------|------|------|------|------|
|               |               |              | RLA             | LRA | MAX FUSE | MCA  |                | LIQUID      | SUCTION | +50   | +40                         | +30   | +20   | +10   | 0    | -5   | -10  | -15  | -20  | -25  |
| HU-0075-A ML5 | RSN5-0075-IAV | 208/230-1    | 8.8             | 45  | 15       | 13.3 | 12.0           | 3/8         | 7/8     | —     | —                           | —     | 8630  | 7200  | 5870 | 5250 | 4650 | 4070 | 3500 | 2950 |
| HU-0100-A ML5 | RSL5-0101-CAV | 208/230-1    | 10.4            | 51  | 20       | 15.3 | 12.0           | 3/8         | 7/8     | —     | —                           | —     | 11900 | 9850  | 7510 | 6430 | 5580 | 4970 | 4470 | 3630 |
| HU-0100-K ML5 | RSL5-0101-TF5 | 208/230-3    | 5.7             | 35  | 15       | 9.4  | 12.0           | 3/8         | 7/8     | —     | —                           | —     | 11900 | 9850  | 7510 | 6430 | 5580 | 4970 | 4470 | 3630 |
| HU-0125-A H2  | REK3-0125-PFV | 208/230-1    | 7.0             | 34  | 15       | 11.1 | 12.0           | 3/8         | 7/8     | 16400 | 13500                       | 10900 | 8520  | 6340  | 4380 | —    | —    | —    | —    | —    |
| HU-0150-A H2  | CRA1-0150-PFV | 208/230-1    | 10.8            | 48  | 20       | 15.8 | 19.2           | 1/2         | 7/8     | 20800 | 17300                       | 14100 | 11100 | 8380  | 5930 | —    | —    | —    | —    | —    |
| HU-0150-K H2  | CRA1-0150-TF5 | 208/230-3    | 9.3             | 58  | 20       | 13.9 | 19.2           | 1/2         | 7/8     | 20800 | 17300                       | 14100 | 11100 | 8380  | 5930 | —    | —    | —    | —    | —    |
| HU-0150-A M5  | CRA1-0150-PFV | 208/230-1    | 10.8            | 48  | 20       | 15.8 | 19.6           | 1/2         | 7/8     | —     | —                           | 14900 | 12100 | 9500  | 7160 | 6090 | 5110 | —    | —    | —    |
| HU-0150-K M5  | CRA1-0150-TF5 | 208/230-3    | 9.3             | 58  | 20       | 13.9 | 19.6           | 1/2         | 7/8     | —     | —                           | 14900 | 12100 | 9500  | 7160 | 6090 | 5110 | —    | —    | —    |
| HU-0200-A H2  | CRD1-0200-PFV | 208/230-1    | 13.4            | 59  | 30       | 19.1 | 19.2           | 1/2         | 7/8     | 26400 | 22300                       | 18200 | 14300 | 10900 | 7890 | —    | —    | —    | —    | —    |
| HU-0200-K H2  | CRD1-0200-TF5 | 208/230-3    | 8.7             | 50  | 15       | 13.2 | 19.2           | 1/2         | 7/8     | 26400 | 22300                       | 18200 | 14300 | 10900 | 7890 | —    | —    | —    | —    | —    |
| HU-0200-A M5  | CRD1-0200-PFV | 208/230-1    | 13.4            | 59  | 30       | 19.1 | 19.6           | 1/2         | 7/8     | —     | —                           | 18500 | 15100 | 11900 | 9080 | 7800 | 6610 | —    | —    | —    |
| HU-0200-K M5  | CRD1-0200-TF5 | 208/230-3    | 8.7             | 50  | 15       | 13.2 | 19.6           | 1/2         | 7/8     | —     | —                           | 18500 | 15100 | 11900 | 9080 | 7800 | 6610 | —    | —    | —    |

### SEMI-HERMETIC LOW TEMPERATURE

| KRACK MODEL  | COMPRESSOR    | POWER SUPPLY | ELECTRICAL DATA |      |          |      | RECEIVER @ 90% | CONNECTIONS |         |       | CAPACITY BTUH @ 95° AMBIENT |       |       |      |      |      |      |      |  |  |
|--------------|---------------|--------------|-----------------|------|----------|------|----------------|-------------|---------|-------|-----------------------------|-------|-------|------|------|------|------|------|--|--|
|              |               |              | RLA             | LRA  | MAX FUSE | MCA  |                | LIQUID      | SUCTION | 0     | -5                          | -10   | -15   | -20  | -25  | -30  | -35  | -40  |  |  |
| SU-0075-A L5 | KAM2-0075-CAV | 208/230-1    | 5.6             | 36.0 | 15       | 9.3  | 12.0           | 3/8         | 7/8     | 6310  | 5550                        | 4890  | 4280  | 3730 | 3210 | 2740 | 2330 | 1990 |  |  |
| SU-0075-K L5 | KAM1-0075-TAC | 208/230-3    | 2.7             | 19.9 | 15       | 5.7  | 12.0           | 3/8         | 7/8     | 6310  | 5550                        | 4890  | 4280  | 3739 | 3210 | 2740 | 2330 | 1990 |  |  |
| SU-0100-A L5 | KAJ3-0100-CAV | 208/230-1    | 6.9             | 40.0 | 15       | 10.9 | 12.0           | 3/8         | 7/8     | 8270  | 7280                        | 6430  | 5670  | 4970 | 4320 | 3710 | 3130 | 2600 |  |  |
| SU-0100-K L5 | KAJ3-0100-TAC | 208/230-3    | 3.4             | 25.0 | 15       | 6.6  | 12.0           | 3/8         | 7/8     | 8270  | 7280                        | 6430  | 5670  | 4970 | 4320 | 3710 | 3130 | 2600 |  |  |
| SU-0150-A L5 | KALA-0150-CAV | 208/230-1    | 9.9             | 55.0 | 20       | 14.7 | 19.2           | 3/8         | 7/8     | 9860  | 9510                        | 8760  | 7810  | 6820 | 5900 | 5100 | 4450 | 3920 |  |  |
| SU-0150-K L5 | KALA-0150-TAC | 208/230-3    | 5.4             | 35.5 | 15       | 9.1  | 19.2           | 3/8         | 7/8     | 9860  | 9510                        | 8760  | 7810  | 6820 | 5900 | 5100 | 4450 | 3920 |  |  |
| SU-0200-A L5 | EAV2-0200-CAB | 230-1        | 10.0            | 58.0 | 20       | 14.8 | 19.2           | 3/8         | 7/8     | 14700 | 13500                       | 12200 | 10800 | 9570 | 8430 | 7410 | 6450 | 5410 |  |  |
| SU-0200-K L5 | EAV1-0200-TAC | 208/230-3    | 6.6             | 46.0 | 15       | 10.6 | 19.2           | 3/8         | 7/8     | 14700 | 13500                       | 12200 | 10800 | 9570 | 8430 | 7410 | 6450 | 5410 |  |  |

### SEMI-HERMETIC MEDIUM TEMPERATURE

| KRACK MODEL  | COMPRESSOR    | POWER SUPPLY | ELECTRICAL DATA |      |          |      | RECEIVER @ 90% | CONNECTIONS |         |       | CAPACITY BTUH @ 95° AMBIENT |       |       |       |       |      |  |
|--------------|---------------|--------------|-----------------|------|----------|------|----------------|-------------|---------|-------|-----------------------------|-------|-------|-------|-------|------|--|
|              |               |              | RLA             | LRA  | MAX FUSE | MCA  |                | LIQUID      | SUCTION | 25    | 20                          | 15    | 10    | 5     | 0     | -5   |  |
| SU-0075-A M2 | KAE2-0075-CAV | 208/230-1    | 5.4             | 36   | 15       | 9.1  | 12.0           | 3/8         | 7/8     | 8110  | 7180                        | 6460  | 5870  | 5320  | 4720  | 3990 |  |
| SU-0075-K M2 | KAE2-0075-TAC | 208/230-3    | 3.4             | 19.9 | 15       | 5.7  | 12.0           | 3/8         | 7/8     | 8110  | 7180                        | 6460  | 5870  | 5320  | 4720  | 3990 |  |
| SU-0100-A M2 | KAM2-0100-CAV | 208/230-1    | 7.5             | 40.0 | 15       | 11.7 | 12.0           | 3/8         | 7/8     | 11000 | 9930                        | 8880  | 7900  | 6990  | 6170  | 5430 |  |
| SU-0100-K M2 | KAM2-0100-TAC | 208/230-3    | 4.5             | 27.0 | 15       | 6.6  | 12.0           | 3/8         | 7/8     | 11000 | 9930                        | 8880  | 7900  | 6990  | 6170  | 5430 |  |
| SU-0150-A M2 | KAMB-0200-CAV | 208/230-1    | 10.6            | 55.0 | 20       | 15.6 | 19.2           | 3/8         | 7/8     | 15300 | 13800                       | 12500 | 11300 | 10100 | 9010  | 7990 |  |
| SU-0150-K M2 | KAKA-0200-TAV | 208/230-3    | 6.8             | 50.0 | 15       | 10.8 | 19.2           | 3/8         | 7/8     | 15300 | 13800                       | 12500 | 11300 | 10100 | 9010  | 7990 |  |
| SU-0200-A M2 | ERV2-0202-CAB | 230-1        | 10.9            | 58.0 | 20       | 15.9 | 19.2           | 3/8         | 7/8     | 18700 | 16700                       | 15100 | 13600 | 12200 | 10700 | 9090 |  |
| SU-0200-K M2 | ERC1-0202-TAC | 208/230-3    | 6.8             | 46.0 | 15       | 10.8 | 19.2           | 3/8         | 7/8     | 18700 | 16700                       | 15100 | 13600 | 12220 | 10700 | 9090 |  |

**M2 = R-22 MEDIUM TEMP +25 THRU -5 F**  
**L5 = R-502 LOW TEMP +0 THRU -40 F**  
**H2 = R-22 HIGH TEMP +50 THRU +0 F**  
**M5 = R-502 MEDIUM TEMP +30 THRU -10 F**  
**ML5 = R-502 MED/LOW +25 THRU -25 F**

# 3, 4, and 5 HP

## HERMETIC HIGH AND MEDIUM TEMPERATURE

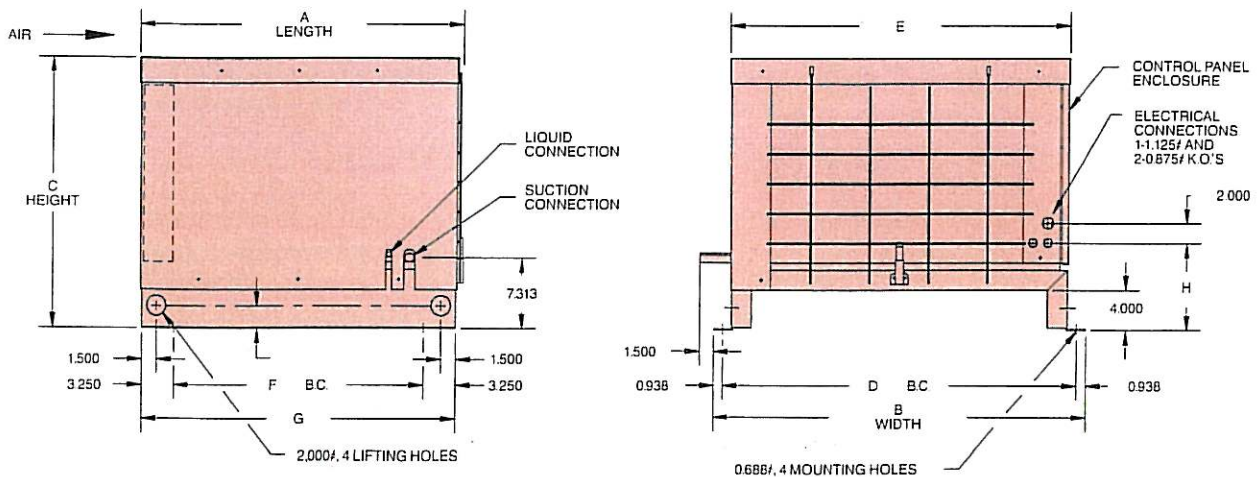
| KRACK MODEL  | COMPRESSOR    | POWER SUPPLY | ELECTRICAL DATA |     |          |      | RECEIVER @ 90% | CONNECTIONS |         | CAPACITY BTUH @ 95° AMBIENT |       |       |       |       |       |       |
|--------------|---------------|--------------|-----------------|-----|----------|------|----------------|-------------|---------|-----------------------------|-------|-------|-------|-------|-------|-------|
|              |               |              | RLA             | LRA | MAX FUSE | MCA  |                | LIQUID      | SUCTION | +40                         | +30   | +20   | +10   | 0     | -5    | -10   |
| HU-0300-A H2 | CRJ1-0300-PFV | 208/230-1    | 22.5            | 93  | 50       | 31.7 | 19.2           | 1/2         | 1 1/8   | 37700                       | 30400 | 23800 | 18000 | 12800 | —     | —     |
| HU-0300-K H2 | CRJ1-0300-TF5 | 208/230-3    | 14.3            | 74  | 30       | 21.5 | 19.2           | 1/2         | 1 1/8   | 37700                       | 30400 | 23800 | 18000 | 12800 | —     | —     |
| HU-0300-A M5 | CRJ1-0300-PFV | 208/230-1    | 22.5            | 93  | 50       | 31.7 | 19.2           | 1/2         | 1 1/8   | —                           | 33000 | 26500 | 20600 | 15800 | 13700 | 11700 |
| HU-0300-K M5 | CRJ1-0300-TF5 | 208/230-3    | 14.3            | 74  | 30       | 21.5 | 19.2           | 1/2         | 1 1/8   | —                           | 33000 | 26500 | 20600 | 15800 | 13700 | 11700 |
| HU-0400-A H2 | CRM1-0400-PFV | 208/230-1    | 30.7            | 125 | 60       | 42.0 | 30.2           | 5/8         | 1 1/8   | 49800                       | 41100 | 32900 | 25100 | 17500 | —     | —     |
| HU-0400-K H2 | CRM1-0400-TF5 | 208/230-3    | 17.9            | 90  | 40       | 26.0 | 30.2           | 5/8         | 1 1/8   | 49800                       | 41100 | 32900 | 25100 | 17500 | —     | —     |
| HU-0400-A M5 | CRM1-0400-PFV | 208/230-1    | 30.7            | 125 | 60       | 42.0 | 30.2           | 5/8         | 1 1/8   | —                           | 42800 | 35600 | 29000 | 22700 | 19100 | 16700 |
| HU-0400-K M5 | CRM1-0400-TF5 | 208/230-3    | 17.9            | 90  | 40       | 26.0 | 30.2           | 5/8         | 1 1/8   | —                           | 42800 | 35600 | 29000 | 22700 | 19100 | 16700 |
| HU-0500-A H2 | CRN1-0500-PFV | 208/230-1    | 34.3            | 142 | 70       | 46.5 | 30.2           | 5/8         | 1 1/8   | 57500                       | 47400 | 38300 | 29900 | 22000 | —     | —     |
| HU-0500-K H2 | CRN1-0500-TF5 | 208/230-3    | 21.4            | 130 | 45       | 30.4 | 30.2           | 5/8         | 1 1/8   | 57500                       | 47400 | 38300 | 29900 | 22000 | —     | —     |
| HU-0500-A M5 | CRN1-0500-PFV | 208/230-1    | 34.3            | 142 | 70       | 46.5 | 30.2           | 5/8         | 1 1/8   | —                           | 48700 | 40400 | 32800 | 25800 | 22500 | 19400 |
| HU-0500-K M5 | CRN1-0500-TF5 | 208/230-3    | 21.4            | 130 | 45       | 30.4 | 30.2           | 5/8         | 1 1/8   | —                           | 48700 | 40400 | 32800 | 25800 | 22500 | 19400 |

## SEMI-HERMETIC MEDIUM TEMPERATURE

| KRACK MODEL  | COMPRESSOR    | POWER SUPPLY | ELECTRICAL DATA |     |          |      | RECEIVER @ 90% | CONNECTIONS |         | CAPACITY BTUH @ 95° AMBIENT |       |       |       |       |       |       |       |       |
|--------------|---------------|--------------|-----------------|-----|----------|------|----------------|-------------|---------|-----------------------------|-------|-------|-------|-------|-------|-------|-------|-------|
|              |               |              | RLA             | LRA | MAX FUSE | MCA  |                | LIQUID      | SUCTION | +30                         | +25   | +20   | +15   | +10   | +5    | 0     | -5    | -10   |
| SU-0300-A M2 | 3RA1-0311-CAB | 230-1        | 17.8            | 86  | 40       | 25.9 | 19.2           | 1/2         | 1 1/8   | —                           | 34300 | 31100 | 28000 | 25100 | 22400 | 20000 | 17900 | —     |
| SU-0300-K M2 | 3RA1-0311-CAB | 208/230-3    | 14.2            | 82  | 30       | 21.4 | 19.2           | 1/2         | 1 1/8   | —                           | 34300 | 31100 | 28000 | 25100 | 22400 | 20000 | 17900 | —     |
| SU-0500-K M2 | 2DC3-0500-TFC | 208/230-3    | 22.3            | 120 | 50       | 31.5 | 30.2           | 5/8         | 1 1/8   | 48900                       | 44300 | 38900 | 35600 | 31500 | 27800 | 24200 | 20900 | 17600 |

## SEMI-HERMETIC LOW TEMPERATURE

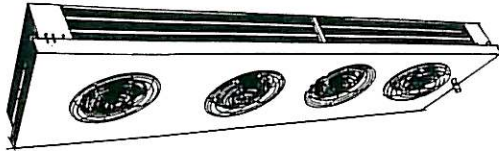
| KRACK MODEL  | COMPRESSOR    | POWER SUPPLY | ELECTRICAL DATA |     |          |      | RECEIVER @ 90% | CONNECTIONS |         | CAPACITY BTUH @ 95° AMBIENT |       |       |       |       |       |       |       |       |
|--------------|---------------|--------------|-----------------|-----|----------|------|----------------|-------------|---------|-----------------------------|-------|-------|-------|-------|-------|-------|-------|-------|
|              |               |              | RLA             | LRA | MAX FUSE | MCA  |                | LIQUID      | SUCTION | 0                           | -5    | -10   | -15   | -20   | -25   | -30   | -35   | -40   |
| SU-0300-A L5 | 2DF3-0300-CFB | 230-1        | 25.8            | 125 | 50       | 35.9 | 19.2           | 1/2         | 1 1/8   | 27800                       | 28500 | 26700 | 23700 | 20500 | 17700 | 15300 | 13200 | 10000 |
| SU-0300-K L5 | 2DF3-0300-TFC | 208/230-3    | 16.8            | 102 | 35       | 24.6 | 19.2           | 1/2         | 1 1/8   | 27800                       | 28500 | 26700 | 23700 | 20500 | 17700 | 15300 | 13200 | 10000 |
| SU-0400-K L5 | 2DL3-0400-TFC | 208/230-3    | 26.3            | 161 | 50       | 36.5 | 30.2           | 5/8         | 1 1/8   | 37700                       | 33800 | 30200 | 27000 | 24000 | 21200 | 18600 | 16200 | 13900 |
| SU-0500-K L5 | 2DA3-0600-TFC | 208/230-3    | 28.8            | 161 | 60       | 39.6 | 30.2           | 5/8         | 1 1/8   | 42800                       | 38700 | 34700 | 30900 | 27500 | 24400 | 21600 | 19000 | 16400 |



| COMPRESSOR HORSEPOWER | DIMENSIONS—INCHES |      |      |      |      |      |      |     |
|-----------------------|-------------------|------|------|------|------|------|------|-----|
|                       | A                 | B    | C    | D    | E    | F    | G    | H   |
| 3/4-2 HP              | 33                | 37.8 | 27.5 | 35.9 | 34.4 | 25.5 | 32   | 8.8 |
| 3-5 HP                | 38.5              | 47.8 | 34.1 | 45.9 | 44.5 | 30.6 | 37.6 | 9.5 |

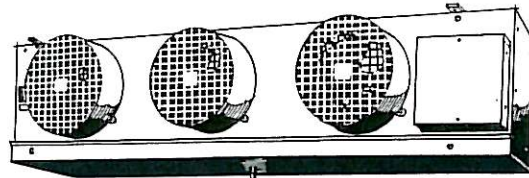
*Commercial  
Refrigeration  
Equipment*

GENTLE AIR



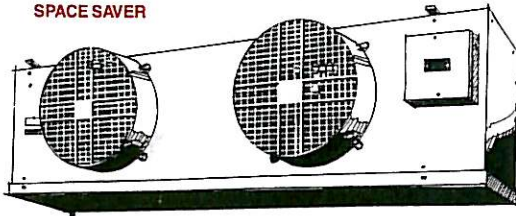
12 Low Silhouette Models 3500  
to 27,000 BTUH  
12 High Silhouette Models 5000  
to 41,000 BTUH  
Air, Electric or Hot Gas Defrost

HITE-SAVER



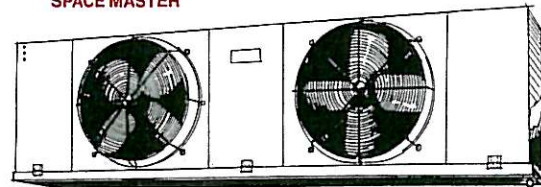
Thirty-five Models 3400  
to 31,200 BTUH  
Air, Electric, or Hot Gas Defrost  
Low Silhouette—Long Air Throw  
Ideal For Walk-In Coolers and Freezers

SPACE SAVER



48 Models 8500 to 65,500 BTUH  
Air, Electric or Hot Gas Defrost  
Compact—Energy Efficient—Long  
Air Throw  
Ideal for Medium Size Coolers  
and Freezers

SPACE MASTER



Ceiling Mounted Draw Thru Models  
37,800 to 182,400 BTUH  
Air, Electric or Hot Gas Defrost  
Compact, Serviceable Design  
with Long Air Throw  
Ideal for Large Cooler  
and Freezer Applications



**Krack Corporation**

401 S. Rohlwing Road • Addison, Illinois 60101  
Phone: (708) 629-7500 • FAX (708) 629-0168