



**HUSSMANN**

**AIR COOLED  
CONDENSING  
UNIT  
CATALOG**

PRELIMINARY VERSION – JULY 2003

## HUSSMANN Air Cooled Condensing Units

### Choose from the following Compressor Types:

H##B Series with Bitzer Octagon & Standard Semi-Hermetic Compressors.

H##H Series with Copeland Hermetic Compressors.

H##S Series with Copeland Semi-Hermetic Compressors.

H##D Series with Copeland Discus Compressors.

H##Z Series with Copeland Scroll Compressors.

### Compressor

Factory balanced and rigid mounted to reduce risk of line failure. All safety switches are pre-piped.

Internal motor overheat protection.

Crankcase heater standard on outdoor units.

Oil level sight glass (Bitzer/Semi-Hermetic/Discus).

Back-seating suction and discharge valves.

Automatic reset low suction pressure switch.

Manual reset high pressure control.

Single and three phase electrical service availability.

### Condenser Coil

Constructed with rifled copper tube with plate type, die formed aluminum fin stock. Fins have full self-spacing collars which completely cover the copper tube and are mechanically bonded and spaced a maximum of 10 fins per inch for increased efficiency.

A separate sub-cooling circuit is available for all base types to ensure gas free liquid to the expansion valve and minimize refrigerant charge.

Fixed head pressure flooding valve for low ambient operation.

New steel support clamp for condenser connections.

### Construction Features

Rugged base constructed of heavy gauge galvanized steel. Optional heavy duty base with receiver mounted under base.

Weather resistant enclosure constructed of galvanized steel with quick removing top panel for easy service.

### Receiver

Amply sized to allow for evaporator pump out and condenser flooding charges. A fusible plug and back seating service valves are included. Relief valve is optional.

## **Control Panel**

Fully enclosed and weatherproof.

Includes system pump down switch, compressor contactor, low pressure control, oil safety, power terminal block and control circuit block.

## **Fans**

All fans have a 16" diameter blade with a ½ hp electric motor (60Hz/50Hz). Each fan has a heavy gauge, corrosion resistant close mesh fan guard.

## **Optional Features**

Suction accumulator minimizes compressor failure caused by liquid flood back and oil slugging.

Adjustable head pressure control.

Oil separator with oil return line to the compressor crankcase assures oil level under all operating conditions.

Optional condenser fin material (vinyl, heresite – backed phenolic, electrofin, copper, gray baked enamel).

Fused or breaker disconnects.

Electrical control panel with all necessary controls to run the electric defrost evaporators, including the time clock, heater, and evaporator motor contactors.

Oversized receivers available for long refrigerant lines.

Pressure relief valve to meet local codes.

Heated and insulated receivers.

Heavy duty bases available for unit stacking and supermarket application.

Spring mounting as well as discharge and suction vibration eliminator for noise and stability.

Adjustable fan cycling.

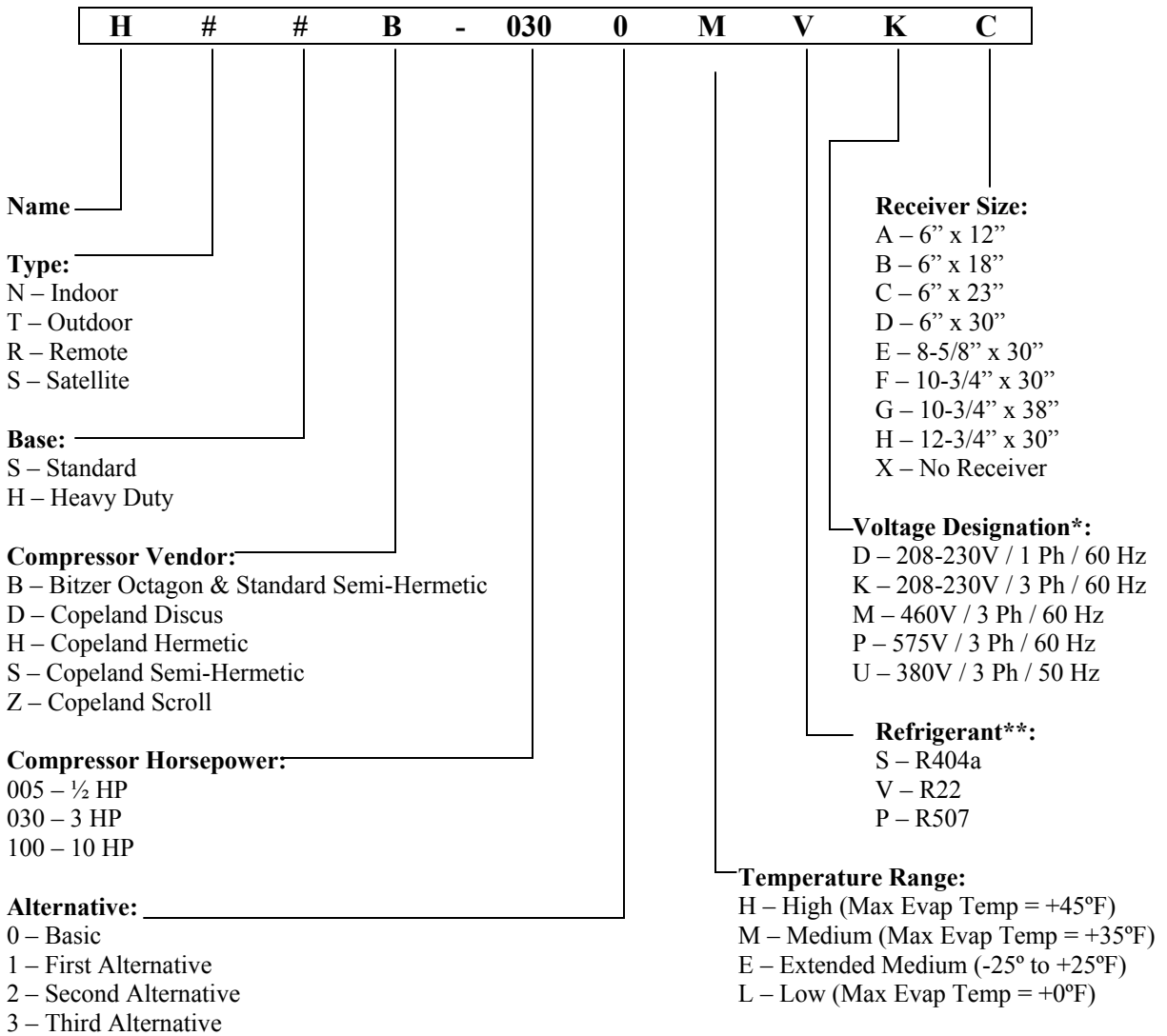
Crankcase heater is available on indoor unit (Standard on outdoor units).

Liquid line solenoid valve shipped loose.

Thermostat shipped loose.

Phase loss / low voltage monitor.

# MODEL NUMBERING SYSTEM



\* Control Voltage is always 208V.

\*\* Consult factory for other refrigerants.

# SUMMARY

## PERFORMANCE DATA – AIR COOLED CONDENSING UNITS

• BITZER OCTAGON & STD SEMI-HERM. / MEDIUM TEMP. – R22	6
• BITZER OCTAGON & STD SEMI-HERM. / MEDIUM TEMP. – R404A	7
• BITZER OCTAGON & STD SEMI-HERM. / LOW TEMP. – R22	8
• BITZER OCTAGON & STD SEMI-HERM. / LOW TEMP. – R404A	9
• COPELAND HERMETIC / HIGH TEMP. – R22	10
• COPELAND HERMETIC / EXTENDED MEDIUM TEMP. – R404A	11
• COPELAND SEMI-HERMETIC / MEDIUM TEMP. – R22	12
• COPELAND DISCUS / HIGH TEMP. – R22	13
• COPELAND SEMI-HERMETIC / MEDIUM TEMP. – R404A	14
• COPELAND DISCUS / HIGH TEMP. – R404A	15
• COPELAND SEMI-HERMETIC / LOW TEMP. – R22	16
• COPELAND DISCUS / LOW TEMP. – R22	17
• COPELAND SEMI-HERMETIC / LOW TEMP. – R404A	18
• COPELAND DISCUS / LOW TEMP. – R404A	19
• COPELAND SCROLL / MEDIUM TEMP. – R22	20
• COPELAND SCROLL / MEDIUM TEMP. – R404A	21
• COPELAND SCROLL / LOW TEMP. – R22	22
• COPELAND SCROLL / LOW TEMP. – R404A	23
RECEIVER STANDARD AND OPTIONS	24
DEFROST KITS	25
DIMENSIONS	26

**PERFORMANCE DATA -Air Cooled  
BITZER / Medium Temperature R-22**

H#B-0050MV	2KC-05.2	AMB	-5°F	SST	0°F	SST	5°F	SST	10°F	SST	15°F	SST	20°F	SST	25°F	SST	30°F	SST	35°F	SST	40°F	SST		
		°F	MBH	KW	MBH	KW	MBH	KW	MBH	KW	MBH	KW	MBH	KW	MBH	KW	MBH	KW	MBH	KW	MBH	KW	MBH	KW
		90	4.3	0.8	5.1	0.8	5.9	0.9	6.9	0.9	7.9	1.0	9.0	1.0	10.1	1.1	11.3	1.1	12.6	1.2	14.1	1.2	15.6	1.3
		95	4.0	0.8	4.8	0.8	5.7	0.9	6.6	1.0	7.5	1.0	8.6	1.1	9.7	1.1	10.9	1.2	12.1	1.2	13.5	1.3	15.0	1.4
		105	3.6	0.8	4.3	0.9	5.1	0.9	5.9	1.0	6.9	1.1	7.8	1.1	8.9	1.2	10.0	1.3	11.2	1.3	12.5	1.4	14.0	1.5

\* MIN CONTROL BREAKER IS 15 A  
CUSTOMER MUST SUPPLY 2 LINE VOLTAGES (CONTROL LINE IS 208 V/3/60)

UNIT MODEL	COMPRESSOR MODEL	208V/3/60				380V/3/50				460V/3/60*				575V/3/60*			
		COMP	FAN	MCA	MIN BRKR	COMP	FAN	MCA	MIN BRKR	COMP	COMP BRKR	FAN	CONT. MCA	COMP	COMP BRKR	FAN	CONT. MCA
		RLA	FLA	A	A	RLA	FLA	A	A	RLA	BRKR A	FLA	A	RLA	BRKR A	FLA	A
H#B-0050MV	2KC-05.2	6.0	2.5	13.0	15	2.7	2.5	8.9	15	2.7	15	2.5	6.1	2.2	15	2.5	6.1
H#B-0070MV	2JC-07.2	7.7	2.5	15.1	20	3.5	2.5	9.9	15	3.5	15	2.5	6.1	2.8	15	2.5	6.1
H#B-0200MV	2HC-2.2	9.5	2.5	17.4	20	4.3	2.5	10.9	15	4.3	15	2.5	6.1	3.4	15	2.5	6.1
H#B-0201MV	2GC-2.2	10.4	2.5	18.5	20	4.7	2.5	11.4	15	4.7	15	2.5	6.1	3.8	15	2.5	6.1
H#B-0300MV	2FC-3.2	12.8	2.5	21.5	25	5.8	2.5	12.8	15	5.8	15	2.5	6.1	4.6	15	2.5	6.1
H#B-0301MV	2EC-3.2	15.3	2.5	24.6	25	6.9	2.5	14.1	15	6.9	15	2.5	6.1	5.5	15	2.5	6.1
H#B-0302MV	2DC-3.2	17.3	5.0	29.6	30	7.8	5.0	17.8	20	7.8	15	5.0	8.6	6.2	15	5.0	8.6
H#B-0400MV	2CC-4.2	20.8	5.0	34.0	40	9.4	5.0	19.8	20	9.4	15	5.0	8.6	7.5	15	5.0	8.6
H#B-0500MV	4FC-5.2	23.9	5.0	37.9	40	10.8	5.0	21.5	25	10.8	15	5.0	8.6	8.6	15	5.0	8.6
H#B-0600MV	4EC-6.2	29.4	5.0	44.8	50	13.3	5.0	24.6	25	13.3	20	5.0	8.6	10.6	15	5.0	8.6
H#B-0700MV	4DC-7.2	35.2	10.0	57.0	60	15.9	10.0	32.9	40	15.9	20	10.0	13.6	12.7	20	10.0	13.6
H#B-1000MV	4V-10.2	46.4	10.0	71.0	80	21.0	10.0	39.3	40	21.0	30	10.0	13.6	16.8	25	10.0	13.6
H#B-1200MV	4T-12.2	53.1	10.0	79.4	80	24.0	10.0	43.0	50	24.0	40	10.0	13.6	19.2	25	10.0	13.6
H#B-1500MV	4P-15.2	68.6	10.0	98.8	100	31.0	10.0	51.8	60	31.0	40	10.0	13.6	24.8	40	10.0	13.6

UNIT MODEL	COMPRESSOR MODEL	REF. LINE CONNECTIONS		RCVR STD DIAxHGT	RCVR CAP R-22 LBS.	EST. SHIP WGT. [LBS]	CABINET SIZE
		LIQ OD	SUCT OD				
H#B-0050MV	2KC-05.2	3/8	1/2	6x12	12.8	283	SMALL
H#B-0070MV	2JC-07.2	3/8	1/2	6x12	12.8	283	SMALL
H#B-0200MV	2HC-2.2	1/2	5/8	6x18	19.2	288	SMALL
H#B-0201MV	2GC-2.2	1/2	5/8	6x18	19.2	288	SMALL
H#B-0300MV	2FC-3.2	1/2	5/8	6x23	24.6	402	MEDIUM
H#B-0301MV	2EC-3.2	1/2	7/8	6x23	24.6	460	MEDIUM
H#B-0302MV	2DC-3.2	5/8	7/8	6x30	32.0	510	MEDIUM
H#B-0400MV	2CC-4.2	5/8	7/8	6x30	32.0	509	MEDIUM
H#B-0500MV	4FC-5.2	5/8	7/8	8-5/8x30	62.0	590	MEDIUM
H#B-0600MV	4EC-6.2	5/8	1-1/8	8-5/8x30	62.0	603	MEDIUM
H#B-0700MV	4DC-7.2	5/8	1-1/8	10-3/4x30	94.6	1,079	LARGE
H#B-1000MV	4V-10.2	7/8	1-3/8	10-3/4x30	94.6	1,214	LARGE
H#B-1200MV	4T-12.2	7/8	1-3/8	12x30	115.0	1,175	LARGE
H#B-1500MV	4P-15.2	7/8	1-3/8	12x30	115.0	1,295	LARGE



**PERFORMANCE DATA -Air Cooled  
BITZER / Low Temperature R-22**

H#B-0050LV	2KC-05.2	AMB	-40°F	SST	-35°F	SST	-30°F	SST	-25°F	SST	-20°F	SST	-15°F	SST	-10°F	SST	-5°F	SST	0°F	SST
		°F	MBH	KW	MBH	KW	MBH	KW	MBH	KW	MBH	KW	MBH	KW	MBH	KW	MBH	KW	MBH	KW
		90	1.5	0.4	1.8	0.4	2.3	0.5	2.7	0.6	3.3	0.6	3.8	0.7	4.5	0.7	4.3	0.8	5.1	0.8
		95	1.4	0.4	1.7	0.4	2.1	0.5	2.6	0.6	3.1	0.6	3.7	0.7	4.3	0.8	4.0	0.8	4.8	0.8
		105	1.2	0.4	1.5	0.4	1.9	0.5	2.3	0.6	2.8	0.6	3.3	0.7	3.9	0.8	3.6	0.8	4.3	0.9

\* MIN CONTROL BREAKER IS 15 A  
CUSTOMER MUST SUPPLY 2 LINE VOLTAGES (CONTROL LINE IS 208 V/3/60)

UNIT MODEL	COMPRESSOR MODEL	208V/3/60				380V/3/50				460V/3/60*				575V/3/60*			
		COMP RLA	FAN FLA	MCA A	MIN BRKR A	COMP RLA	FAN FLA	MCA A	MIN BRKR A	COMP RLA	FAN FLA	CONT. MCA A	COMP RLA	FAN FLA	CONT. MCA A		
H#B-0050LV	2KC-05.2	6.0	2.5	13.0	15	2.7	2.5	8.9	15	2.7	15	2.5	6.1	2.2	15	2.5	6.1

UNIT MODEL	COMPRESSOR MODEL	REF. LINE CONNECTIONS LIQ OD	RCVR STD DIAxHGT	RCVR CAP R-22 LBS.	EST. SHIP WGT. (LBS)	CABINET SIZE
H#B-0050LV	2KC-05.2	3/8 1/2	6x12	12.8	283	SMALL
H#B-0070LV	2JC-07.2	3/8 1/2	6x12	12.8	283	SMALL
H#B-0100LV	2HC-1.2	3/8 5/8	6x12	12.8	281	SMALL
H#B-0200LV	2GC-2.2	1/2 5/8	6x18	19.2	288	SMALL
H#B-0201LV	2FC-2.2	1/2 5/8	6x18	19.2	288	SMALL
H#B-0202LV	2EC-2.2	1/2 7/8	6x18	19.2	345	SMALL
H#B-0203LV	2DC-2.2	1/2 7/8	6x18	19.2	345	SMALL
H#B-0300LV	2CC-3.2	1/2 7/8	6x23	24.6	459	MEDIUM
H#B-0301LV	4FC-3.2	1/2 7/8	6x23	24.6	486	MEDIUM
H#B-0400LV	4EC-4.2	1/2 1-1/8	6x23	24.6	501	MEDIUM
H#B-0500LV	4DC-5.2	5/8 1-1/8	6x30	32.0	555	MEDIUM
H#B-0600LV	4V-6.2	5/8 1-1/8	6x30	32.0	569	MEDIUM
H#B-0800LV	4T-8.2	5/8 1-3/8	8-5/8x30	62.0	957	LARGE
H#B-1000LV	4P-10.2	5/8 1-3/8	10-3/4x30	94.6	1,217	LARGE
H#B-1200LV	4N-12.2	5/8 1-5/8	10-3/4x30	94.6	1,227	LARGE
H#B-1300LV	4J-13.2	7/8 1-5/8	10-3/4x30	94.6	1,305	LARGE
H#B-1500LV	4H-15.2	7/8 2-1/8	12x30	115.0	1,281	LARGE
H#B-2000LV	4G-20.2	7/8 2-1/8	12x30	115.0	1,301	LARGE



**PERFORMANCE DATA -Air Cooled  
BITZER / Low Temperature R-404A**

H#	B#	Model	AMB °F		-40°F		-35°F		-30°F		-25°F		-20°F		-15°F		-10°F		-5°F		0°F		
			°F	MBH	KW	MBH	KW	MBH	KW	MBH	KW	MBH	KW	MBH	KW	MBH	KW	MBH	KW	MBH	KW	MBH	KW
H#B-0050LS	2KC-05.2Y	90	1.4	0.5	1.8	0.5	2.2	0.6	2.7	0.7	3.3	0.7	3.8	0.8	4.5	0.8	5.2	0.9	5.9	1.0			
		95	1.2	0.5	1.6	0.5	2.0	0.6	2.5	0.7	3.0	0.7	3.5	0.8	4.2	0.8	4.8	0.9	5.5	1.0			
		105	1.0	0.4	1.3	0.5	1.7	0.6	2.1	0.6	2.6	0.7	3.0	0.8	3.5	0.8	4.2	0.9	4.8	1.0			

\* MIN CONTROL BREAKER IS 15 A  
CUSTOMER MUST SUPPLY 2 LINE VOLTAGES (CONTROL LINE IS 208 V/3/60)

UNIT MODEL	COMPRESSOR MODEL	208V/3/60				380V/3/50				460V/3/60*				575V/3/60*			
		COMP RLA	FAN FLA	MCA A	MIN BRKR A	COMP RLA	FAN FLA	MCA A	MIN BRKR A	COMP RLA	FAN FLA	MCA A	MIN BRKR A	COMP RLA	FAN FLA	MCA A	MIN BRKR A
H#B-0050LS	2KC-05.2Y	6.0	2.5	13.0	15	2.7	2.5	8.9	15	2.7	15	2.5	6.1	2.2	15	2.5	6.1

UNIT MODEL	COMPRESSOR MODEL	REF. LINE CONNECTIONS		RCVR STD DIAxHGT	RCVR CAP R-404A LBS.	EST. SHIP WGT. (LBS)	CABINET SIZE
		LIQ OD	SUCT OD				
H#B-0050LS	2KC-05.2Y	3/8	1/2	6x12	11.1	283	SMALL
H#B-0070LS	2JC-07.2Y	3/8	1/2	6x12	11.1	283	SMALL
H#B-0100LS	2HC-1.2Y	3/8	5/8	6x12	11.1	281	SMALL
H#B-0200LS	2GC-2.2Y	1/2	5/8	6x18	16.7	288	SMALL
H#B-0201LS	2FC-2.2Y	1/2	5/8	6x18	16.7	288	SMALL
H#B-0202LS	2EC-2.2Y	1/2	7/8	6x18	16.7	345	SMALL
H#B-0203LS	2DC-2.2Y	1/2	7/8	6x18	16.7	345	SMALL
H#B-0300LS	2CC-3.2Y	1/2	7/8	6x23	21.4	459	MEDIUM
H#B-0301LS	4FC-3.2Y	1/2	7/8	6x23	21.4	486	MEDIUM
H#B-0400LS	4EC-4.2Y	1/2	1-1/8	6x23	21.4	501	MEDIUM
H#B-0500LS	4DC-5.2Y	5/8	1-1/8	6x30	27.9	555	MEDIUM
H#B-0600LS	4V-6.2Y	5/8	1-1/8	6x30	27.9	569	MEDIUM
H#B-0800LS	4T-8.2Y	5/8	1-3/8	8-5/8x30	53.9	957	LARGE
H#B-1000LS	4P-10.2Y	5/8	1-3/8	10-3/4x30	82.3	1,217	LARGE
H#B-1200LS	4N-12.2Y	5/8	1-5/8	10-3/4x30	82.3	1,227	LARGE
H#B-1300LS	4J-13.2Y	7/8	1-5/8	10-3/4x30	82.3	1,305	LARGE
H#B-1500LS	4H-15.2Y	7/8	2-1/8	12x30	100.1	1,281	LARGE
H#B-2000LS	4G-20.2Y	7/8	2-1/8	12x30	100.1	1,301	LARGE

**PERFORMANCE DATA -Air Cooled  
Copeland Hermetic / High Temperature R-22**

UNIT MODEL	COMPRESSOR MODEL	AMB	-5°F	SST	0°F	SST	5°F	SST	10°F	SST	15°F	SST	20°F	SST	25°F	SST	30°F	SST	35°F	SST	40°F	SST		
		*F	MBH	KW	MBH	KW	MBH	KW	MBH	KW	MBH	KW	MBH	KW	MBH	KW	MBH	KW	MBH	KW	MBH	KW	MBH	KW
H##H-0050HV	ART-82C1	90	-	-	3.1	0.5	3.6	0.6	4.0	0.6	4.5	0.6	5.1	0.6	5.7	0.7	6.4	0.7	-	-	-	-	-	-
		95	-	-	3.0	0.5	3.4	0.6	3.8	0.6	4.3	0.6	4.8	0.7	5.4	0.7	6.1	0.7	-	-	-	-	-	-
		105	-	-	2.7	0.5	3.1	0.6	3.5	0.6	3.9	0.7	4.4	0.7	4.9	0.7	5.6	0.7	-	-	-	-	-	-
H##H-0070HV	RS64C2	90	-	-	4.7	1.0	5.4	1.0	6.1	1.1	6.9	1.1	7.9	1.2	8.8	1.2	9.9	1.3	11.0	1.3	12.2	1.4	13.9	1.4
		95	-	-	4.5	1.0	5.1	1.1	5.9	1.1	6.7	1.2	7.5	1.2	8.5	1.3	9.5	1.3	10.6	1.4	11.8	1.4	13.3	1.2
		105	-	-	4.1	1.0	4.7	1.1	5.4	1.2	6.2	1.2	7.0	1.3	7.9	1.3	8.8	1.4	9.8	1.4	10.9	1.5	12.2	1.4
H##H-0100HV	RS70C1	90	-	-	5.1	0.7	6.1	0.8	7.0	0.9	8.0	0.9	9.1	1.0	10.2	1.0	11.4	1.1	12.6	1.1	13.9	1.2	15.9	1.2
		95	-	-	4.7	0.7	5.7	0.8	6.6	0.9	7.6	0.9	8.6	1.0	9.7	1.1	10.9	1.1	12.1	1.1	13.3	1.2	15.1	1.2
		105	-	-	4.0	0.7	4.9	0.8	5.8	0.9	6.8	1.0	7.8	1.0	8.8	1.1	9.9	1.1	10.9	1.2	12.1	1.3	13.9	1.3
H##H-0150HV	CR18KQ	90	3.4	0.7	5.0	0.8	6.5	0.9	7.9	1.0	9.6	1.1	11.2	1.2	12.8	1.3	14.7	1.4	16.5	1.5	18.4	1.5	21.4	1.6
		95	2.7	0.6	4.2	0.8	5.8	0.9	7.3	1.0	8.8	1.1	10.5	1.2	12.2	1.3	13.8	1.4	15.8	1.5	17.6	1.6	20.1	1.6
		105	1.3	0.5	2.8	0.7	4.3	0.8	5.8	1.0	7.5	1.1	9.1	1.2	10.7	1.3	12.5	1.4	14.1	1.5	15.9	1.6	18.4	1.6
H##H-0200HV	CR24KQ	90	-	-	8.4	1.2	9.6	1.3	11.2	1.4	12.7	1.5	14.4	1.6	16.2	1.7	18.1	1.8	20.2	2.0	22.3	2.1	25.4	2.1
		95	-	-	7.8	1.2	9.1	1.3	10.5	1.4	12.1	1.5	13.7	1.7	15.4	1.8	17.3	1.9	19.3	2.0	21.4	2.1	24.5	2.1
		105	-	-	6.8	1.2	8.0	1.3	9.2	1.4	10.7	1.6	12.1	1.7	13.7	1.8	15.5	1.9	17.3	2.1	19.3	2.2	22.3	2.2
H##H-0300HV	CR37KQ	90	11.0	1.6	13.0	1.8	15.4	2.0	17.7	2.2	20.2	2.3	23.0	2.5	25.8	2.7	28.7	2.8	31.7	3.0	34.9	3.1	38.6	3.2
		95	10.0	1.6	12.2	1.8	14.3	2.0	16.8	2.2	19.2	2.4	21.8	2.5	24.5	2.7	27.5	2.9	30.5	3.0	33.6	3.2	37.1	3.2
		105	8.3	1.6	10.4	1.8	12.5	2.0	14.9	2.2	17.1	2.4	19.6	2.6	22.3	2.8	25.0	3.0	27.8	3.1	30.6	3.3	34.1	3.3
H##H-0400HV	CR53KQ	90	-	-	18.3	2.7	21.4	3.0	24.6	3.3	27.5	3.5	30.9	3.8	34.5	4.0	38.0	4.3	42.1	4.5	46.1	4.8	50.5	5.1
		95	-	-	16.9	2.7	20.0	3.0	23.1	3.3	26.3	3.6	29.6	3.8	33.0	4.1	36.4	4.3	40.3	4.6	44.2	4.9	48.6	5.1
		105	-	-	14.9	2.7	17.9	3.0	20.6	3.3	23.6	3.6	26.6	3.9	29.8	4.2	33.2	4.5	36.5	4.8	40.4	5.1	45.1	5.1
H##H-0500HV	CRN5-0500	90	-	-	20.9	3.2	24.5	3.6	28.1	3.9	32.2	4.3	36.0	4.6	39.9	5.0	43.9	5.3	48.5	5.6	52.9	6.0	58.1	6.1
		95	-	-	19.3	3.2	23.2	3.6	26.8	4.0	30.5	4.3	34.5	4.7	38.3	5.0	42.3	5.4	46.3	5.8	50.5	6.1	55.9	6.1
		105	-	-	16.6	3.2	20.1	3.6	24.0	4.0	27.6	4.4	31.1	4.8	34.8	5.2	38.9	5.6	42.7	6.0	46.6	6.4	52.9	6.4

\* MIN CONTROL BREAKER IS 15 A  
CUSTOMER MUST SUPPLY 2 LINE VOLTAGES (CONTROL LINE IS 208 V/3/60)

UNIT MODEL	COMPRESSOR MODEL	208V/1/60				208V/3/60				380V/3/50				460V/3/60*				575V/3/60*				
		COMP RLA	FAN FLA	MCA A	MIN BRKR A	COMP RLA	FAN FLA	MCA A	MIN BRKR A	COMP RLA	FAN FLA	MCA A	MIN BRKR A	COMP RLA	COMP BRKR A	FAN FLA	CONT. MCA A	COMP RLA	COMP BRKR A	FAN FLA	CONT. MCA A	
H##H-0050HV	ART82C1	5.9	2.5	12.9	15	-	-	-	-	-	-	-	-	-	-	-	-	-	-	-	-	-
H##H-0070HV	RS64C2	7.7	2.5	15.1	20	-	-	-	-	-	-	-	-	-	-	-	-	-	-	-	-	-
H##H-0100HV	RS70C1	7.0	2.5	14.3	15	4.7	2.5	11.4	15	2.6	2.5	8.8	15	2.6	15	2.5	6.1	-	-	-	-	-
H##H-0150HV	CR18KQ	9.0	2.5	16.8	20	5.5	2.5	12.4	15	-	-	-	-	-	-	-	-	-	-	-	-	-
H##H-0200HV	CR24KQ	13.5	2.5	22.4	25	7.5	2.5	14.9	15	3.7	2.5	10.1	15	3.7	15	2.5	6.1	-	-	-	-	-
H##H-0300HV	CR37KQ	18.5	2.5	28.6	30	11.1	2.5	19.4	20	5.6	2.5	12.5	15	5.6	15	2.5	6.1	-	-	-	-	-
H##H-0400HV	CR53KQ	29.0	2.5	41.8	50	18.0	2.5	28.0	30	9.1	2.5	16.9	20	9.1	15	2.5	6.1	-	-	-	-	-
H##H-0500HV	CRN5-0500	34.3	2.5	48.4	50	21.4	2.5	32.3	40	9.6	2.5	17.5	20	9.6	15	2.5	6.1	7.9	15	2.5	6.1	

UNIT MODEL	COMPRESSOR MODEL	REF. LINE CONNECTIONS		RCVR STD DIAxHGT	RCVR CAP R-22 LBS.	EST. SHIP WGT. [LBS]	CABINET SIZE
		LIQ OD	SUCT OD				
H##H-0050HV	ART82C1	3/8	1/2	6x12	12.8	229	SMALL
H##H-0070HV	RS64C2	3/8	1/2	6x12	12.8	240	SMALL
H##H-0100HV	RS70C1	3/8	1/2	6x12	12.8	242	SMALL
H##H-0150HV	CR18KQ	1/2	7/8	6x18	19.2	256	SMALL
H##H-0200HV	CR24KQ	1/2	7/8	6x18	19.2	258	SMALL
H##H-0300HV	CR37KQ	1/2	1-1/8	6x23	24.6	384	MEDIUM
H##H-0400HV	CR53KQ	1/2	1-1/8	6x23	24.6	392	MEDIUM
H##H-0500HV	CRN5-0500	1/2	1-1/8	6x23	24.6	406	MEDIUM

**PERFORMANCE DATA -Air Cooled  
Copeland Hermetic / Extended Medium Temperature R-404A**

UNIT MODEL	COMPRESSOR MODEL	-25°F		SST		-20°F		SST		-15°F		SST		-10°F		SST		-5°F		SST		0°F		SST		5°F		SST		10°F		SST		15°F		SST		20°F		SST		25°F		SST																										
		AMB °F	MBH	MBH	KW	MBH	KW	MBH	KW	MBH	KW	MBH	KW	MBH	KW	MBH	KW	MBH	KW	MBH	KW	MBH	KW	MBH	KW	MBH	KW	MBH	KW	MBH	KW	MBH	KW	MBH	KW	MBH	KW	MBH	KW	MBH	KW	MBH	KW	MBH	KW																									
H##H-0050ES	RS43C2E	90	1.3	0.5	1.7	0.5	2.1	0.6	2.5	0.6	3.0	0.6	3.5	0.7	4.0	0.7	4.7	0.8	5.3	0.8	6.0	0.9	6.9	0.9	9.5	1.2	0.5	1.6	0.5	1.9	0.6	2.3	0.6	2.7	0.6	3.2	0.7	3.7	0.7	4.3	0.8	5.0	0.8	5.7	0.9	6.5	0.9	105	1.2	0.5	1.4	0.5	1.7	0.6	2.0	0.6	2.3	0.7	2.7	0.7	3.2	0.8	3.6	0.8	4.3	0.9	4.9	0.9	5.6	1.0
		90	2.4	0.8	2.9	0.9	3.5	0.9	4.1	1.0	4.6	1.0	5.3	1.1	6.0	1.1	6.7	1.2	7.4	1.2	8.2	1.3	9.0	1.3	9.5	2.2	0.8	2.7	0.9	3.2	0.9	3.8	1.0	4.4	1.0	4.9	1.1	5.6	1.1	6.3	1.2	7.0	1.3	7.8	1.3	8.6	1.4	105	1.8	0.8	2.3	0.9	2.8	0.9	3.3	1.0	3.8	1.0	4.4	1.1	4.9	1.2	5.6	1.2	6.2	1.3	6.9	1.3	7.5	1.4
		90	2.9	1.0	3.8	1.0	4.6	1.1	5.4	1.2	6.3	1.3	7.3	1.4	8.3	1.5	9.3	1.6	10.4	1.7	11.6	1.8	12.9	1.9	95	2.6	0.9	3.4	1.0	4.2	1.1	5.0	1.2	5.9	1.3	6.8	1.4	7.8	1.5	8.8	1.6	9.9	1.7	10.9	1.8	12.1	1.9	105	2.0	0.9	2.7	1.0	3.6	1.1	4.4	1.2	5.2	1.3	6.0	1.5	6.9	1.6	7.8	1.7	8.7	1.8	9.6	1.9	10.6	2.0
H##H-0180ES	CS12K6E	90	3.3	0.9	4.2	1.0	5.2	1.1	6.4	1.2	7.6	1.3	8.8	1.4	10.2	1.5	11.7	1.6	13.0	1.7	14.7	1.8	16.1	1.9	95	3.0	0.8	3.9	1.0	4.8	1.1	5.8	1.2	6.9	1.3	8.2	1.4	9.5	1.5	10.8	1.6	12.2	1.7	13.6	1.8	15.2	1.9	105	2.2	0.8	3.1	0.9	3.9	1.0	4.7	1.1	5.8	1.3	6.9	1.4	8.1	1.5	9.1	1.6	10.5	1.7	11.8	1.9	13.0	2.0
		90	4.4	1.1	5.4	1.2	6.5	1.3	7.6	1.4	9.0	1.5	10.3	1.7	11.8	1.8	13.2	1.9	14.9	2.0	16.3	2.1	18.0	2.3	95	4.0	1.0	4.9	1.2	6.0	1.3	7.2	1.4	8.3	1.5	9.7	1.7	11.1	1.8	12.5	1.9	14.0	2.1	15.4	2.2	16.7	2.3	105	3.3	1.0	4.1	1.1	5.0	1.3	6.1	1.4	7.1	1.5	8.3	1.7	9.6	1.8	10.7	1.9	12.1	2.1	13.4	2.2	14.6	2.3
		90	5.6	1.4	7.1	1.6	8.6	1.8	10.3	1.9	11.8	2.1	13.4	2.3	15.1	2.4	17.0	2.6	19.0	2.8	21.3	3.0	23.4	3.2	95	4.9	1.4	6.4	1.6	7.9	1.7	9.5	1.9	10.9	2.1	12.4	2.3	14.0	2.4	15.7	2.6	17.6	2.8	19.8	3.0	22.2	3.2	105	3.4	1.2	5.0	1.4	6.3	1.6	7.6	1.8	9.1	2.0	10.4	2.2	11.8	2.4	13.3	2.6	15.0	2.8	16.8	3.0	18.9	3.3
H##H-0400ES	CS27K3E	90	8.8	2.1	9.8	2.2	11.3	2.4	13.2	2.6	15.3	2.8	17.9	3.0	20.5	3.3	23.4	3.6	26.5	3.9	29.7	4.2	33.1	4.5	95	8.5	2.1	9.2	2.2	10.4	2.4	12.1	2.6	14.2	2.8	16.4	3.1	19.2	3.3	21.9	3.6	24.8	3.9	27.9	4.3	31.1	4.6	105	8.0	2.2	8.3	2.3	9.1	2.4	10.3	2.6	11.9	2.8	14.0	3.0	16.1	3.3	18.4	3.6	21.0	4.0	23.7	4.3	26.6	4.7
		90	9.7	2.2	11.8	2.4	14.2	2.8	16.4	3.1	18.8	3.4	21.6	3.8	24.4	4.1	27.3	4.5	30.0	4.8	33.4	5.1	37.1	5.5	95	9.0	2.1	10.9	2.4	13.1	2.7	15.2	3.1	17.4	3.4	19.7	3.8	22.3	4.1	25.0	4.5	28.0	4.8	31.2	5.2	34.7	5.5	105	7.3	2.0	8.9	2.3	10.8	2.6	12.5	3.0	14.7	3.3	16.7	3.7	18.9	4.1	21.3	4.5	23.9	4.9	26.7	5.3	29.8	5.6
		90	9.7	2.2	11.8	2.4	14.2	2.8	16.4	3.1	18.8	3.4	21.6	3.8	24.4	4.1	27.3	4.5	30.0	4.8	33.4	5.1	37.1	5.5	95	9.0	2.1	10.9	2.4	13.1	2.7	15.2	3.1	17.4	3.4	19.7	3.8	22.3	4.1	25.0	4.5	28.0	4.8	31.2	5.2	34.7	5.5	105	7.3	2.0	8.9	2.3	10.8	2.6	12.5	3.0	14.7	3.3	16.7	3.7	18.9	4.1	21.3	4.5	23.9	4.9	26.7	5.3	29.8	5.6

\* MIN CONTROL BREAKER IS 15 A  
CUSTOMER MUST SUPPLY 2 LINE VOLTAGES (CONTROL LINE IS 208 V/3/60)

UNIT MODEL	COMPRESSOR MODEL	208V/1/60				208V/3/60				380V/3/50				460V/3/60*									
		COMP		FAN		MCA		MIN BRKR		COMP		FAN		MCA		MIN BRKR		COMP		FAN		CONT. MCA	
		RLA	FLA	A	A	RLA	FLA	A	A	RLA	FLA	A	A	RLA	FLA	A	A	RLA	FLA	A	A	A	
H##H-0050ES	RS43C1E	5.4	2.5	12.3	15	-	-	-	-	-	-	-	-	-	-	-	-	-	-	-	-	-	
H##H-0070ES	RS64C2	7.7	2.5	15.1	20	-	-	-	-	-	-	-	-	-	-	-	-	-	-	-	-	-	
H##H-0130ES	RS97C1E	11.0	2.5	19.3	20	-	-	-	-	-	-	-	-	-	-	-	-	-	-	-	-	-	
H##H-0180ES	CS12K6E	10.9	2.5	19.1	20	7.5	2.5	14.9	15	-	-	-	-	-	-	-	-	-	-	-	-	-	
H##H-0200ES	CS14K6E	12.4	2.5	21.0	25	9.1	2.5	16.9	20	4.7	2.5	11.4	15	4.7	15	2.5	6.1	-	-	-	-	-	
H##H-0300ES	CS20K6E	18.6	2.5	28.8	30	11.4	2.5	19.8	20	5.1	2.5	11.9	15	5.1	15	2.5	6.1	-	-	-	-	-	
H##H-0400ES	CS27K6E	23.9	2.5	35.4	40	15.6	2.5	25.0	30	8.5	2.5	16.1	20	8.5	15	2.5	6.1	-	-	-	-	-	
H##H-0500ES	CS33K6E	30.7	2.5	43.9	50	20.7	2.5	31.4	40	9.9	2.5	17.9	20	9.9	15	2.5	6.1	-	-	-	-	-	

UNIT MODEL	COMPRESSOR MODEL	REF. LINE CONNECTIONS LIQ OD	REF. LINE CONNECTIONS SUCT OD	RCVR STD DIAxHGT	RCVR CAP R-404A LBS.	EST. SHIP WGT. [LBS]	CABINET SIZE
H##H-0050ES	RS43C1E	3/8	1/2	6x12	11.1	240	SMALL
H##H-0070ES	RS64C2	3/8	1/2	6x12	11.1	240	SMALL
H##H-0130ES	RS97C1E	3/8	7/8	6x12	11.1	249	SMALL
H##H-0180ES	CS12K6E	1/2	7/8	6x18	16.7	266	SMALL
H##H-0200ES	CS14K6E	1/2	7/8	6x18	16.7	267	SMALL
H##H-0300ES	CS20K6E	1/2	7/8	6x18	16.7	271	SMALL
H##H-0400ES	CS27K6E	1/2	1-1/8	6x23	21.4	391	MEDIUM
H##H-0500ES	CS33K6E	1/2	1-1/8	6x23	21.4	395	MEDIUM

**PERFORMANCE DATA -Air Cooled  
Copeland Semi-Hermetic / Medium Temperature R-22**

UNIT MODEL	COMPRESSOR MODEL	AMB	5°F	SST	0°F	SST	5°F	SST	10°F	SST	15°F	SST	20°F	SST	25°F	SST	30°F	SST	35°F	SST	40°F	SST		
		*F	MBH	KW	MBH	KW	MBH	KW	MBH	KW	MBH	KW	MBH	KW	MBH	KW	MBH	KW	MBH	KW	MBH	KW	MBH	KW
H#S-0050MV	HAJ#-005E	90	2.4	0.4	2.8	0.4	3.2	0.4	3.6	0.5	4.1	0.5	4.6	0.5	5.2	0.5	-	-	-	-	-	-	-	-
		95	2.3	0.4	2.7	0.4	3.1	0.4	3.5	0.5	3.9	0.5	4.4	0.5	5.0	0.5	-	-	-	-	-	-	-	-
		105	2.1	0.4	2.4	0.4	2.8	0.5	3.2	0.5	3.6	0.5	4.0	0.5	4.6	0.6	-	-	-	-	-	-	-	-
H#S-0070MV	KAN#-007E	90	-	-	3.5	0.5	4.0	0.6	4.7	0.6	5.4	0.6	6.1	0.6	6.9	0.7	7.8	0.7	8.7	0.7	9.8	0.7	9.8	0.7
		95	-	-	3.3	0.6	3.9	0.6	4.5	0.6	5.1	0.6	5.9	0.6	6.6	0.7	7.5	0.7	8.4	0.7	9.4	0.7	9.4	0.7
		105	-	-	2.8	0.6	3.4	0.6	4.0	0.6	4.7	0.6	5.4	0.7	6.1	0.7	6.9	0.7	7.8	0.8	8.7	0.8	8.7	0.8
H#S-0071MV	KAE#-007E	90	3.9	0.6	4.5	0.7	5.1	0.7	5.8	0.8	6.5	0.8	7.3	0.8	8.1	0.9	-	-	-	-	-	-	-	-
		95	3.8	0.7	4.3	0.7	4.9	0.7	5.5	0.8	6.3	0.8	7.0	0.9	7.8	0.9	-	-	-	-	-	-	-	-
		105	3.4	0.7	3.9	0.7	4.4	0.8	5.1	0.8	5.7	0.9	6.4	0.9	7.2	1.0	-	-	-	-	-	-	-	-
H#S-0100MV	KAR#-010E	90	-	-	5.2	0.8	5.9	0.9	6.7	0.9	7.5	1.0	8.4	1.1	9.4	1.1	10.4	1.2	11.6	1.2	12.8	1.3	12.8	1.3
		95	-	-	5.0	0.8	5.7	0.9	6.4	1.0	7.2	1.0	8.1	1.1	9.0	1.1	10.0	1.2	11.1	1.3	12.3	1.3	12.3	1.3
		105	-	-	4.6	0.9	5.2	0.9	5.9	1.0	6.7	1.0	7.5	1.1	8.3	1.2	9.3	1.3	10.3	1.3	11.4	1.4	11.4	1.4
H#S-0200MV	KAK#-020E	90	-	-	8.2	1.3	9.6	1.4	11.1	1.4	12.6	1.5	14.2	1.6	15.8	1.7	17.4	1.8	19.2	1.8	21.2	1.9	21.2	1.9
		95	-	-	7.8	1.3	9.2	1.4	10.7	1.5	12.1	1.6	13.7	1.6	15.2	1.7	16.9	1.8	18.7	1.9	20.5	2.0	20.5	2.0
		105	-	-	7.0	1.4	8.5	1.5	9.9	1.6	11.3	1.6	12.7	1.7	14.2	1.8	15.7	1.9	17.3	2.0	19.2	2.1	19.2	2.1
H#S-0201MV	ERC#-020E	90	8.2	1.4	9.5	1.5	10.8	1.6	12.4	1.7	14.1	1.8	15.9	1.9	17.9	2.0	-	-	-	-	-	-	-	-
		95	7.9	1.4	9.1	1.5	10.5	1.6	11.9	1.7	13.5	1.9	15.3	2.0	17.2	2.1	-	-	-	-	-	-	-	-
		105	7.1	1.4	8.3	1.5	9.5	1.7	10.9	1.8	12.4	1.9	13.9	2.1	15.6	2.2	-	-	-	-	-	-	-	-
H#S-0300MV	ERF#-031E	90	-	-	15.0	2.3	17.1	2.4	19.3	2.5	21.5	2.7	24.1	2.8	26.6	3.0	29.3	3.1	32.2	3.2	35.6	3.4	35.6	3.4
		95	-	-	14.5	2.3	16.4	2.5	18.5	2.6	20.7	2.8	23.1	2.9	25.6	3.1	28.5	3.2	31.3	3.3	34.3	3.5	34.3	3.5
		105	-	-	13.1	2.4	15.0	2.5	17.1	2.7	19.1	2.9	21.5	3.0	23.8	3.2	26.3	3.4	29.1	3.5	31.9	3.7	31.9	3.7
H#S-0301MV	3RAA-031E	90	15.2	2.6	17.4	2.8	19.8	3.1	22.4	3.3	25.0	3.5	27.7	3.7	30.5	3.9	-	-	-	-	-	-	-	-
		95	14.4	2.6	16.5	2.9	19.0	3.1	21.3	3.3	23.8	3.6	26.7	3.7	29.5	4.0	-	-	-	-	-	-	-	-
		105	12.9	2.6	14.8	2.9	17.1	3.2	19.4	3.5	21.7	3.7	24.3	4.0	27.0	4.2	-	-	-	-	-	-	-	-

\* MIN CONTROL BREAKER IS 15 A  
CUSTOMER MUST SUPPLY 2 LINE VOLTAGES (CONTROL LINE IS 208 V/3/60)

UNIT MODEL	COMPRESSOR MODEL	208V/11/60				208V/3/60				380V/3/50				460V/3/60*			
		COMP RLA	FAN FLA	MCA A	MIN BRKR A	COMP RLA	FAN FLA	MCA A	MIN BRKR A	COMP RLA	FAN FLA	MCA A	MIN BRKR A	COMP RLA	COMP BRKR A	FAN FLA	CONT. MCA A
H#S-0050MV	HAJ#-005E	3.7	2.5	10.1	15	2.2	2.5	8.3	15	-	-	-	-	-	-	-	-
H#S-0070MV	KAN#-007E	5.4	2.5	12.3	15	-	-	-	-	-	-	-	-	-	-	-	-
H#S-0071MV	KAE#-007E	5.4	2.5	12.3	15	3.4	2.5	9.8	15	-	-	-	-	-	-	-	-
H#S-0100MV	KAR#-010E	7.4	2.5	14.8	15	4.3	2.5	10.9	15	2.0	2.5	8.0	15	2.0	15	2.5	6.1
H#S-0200MV	KAK#-021E	10.6	2.5	18.8	20	6.8	2.5	14.0	15	-	-	-	-	-	-	-	-
H#S-0201MV	ERC#-021E	-	-	-	-	8.8	2.5	16.5	20	3.5	2.5	9.9	15	3.5	15	2.5	6.1
H#S-0300MV	ERF#-031E	17.0	5.0	29.3	30	12.4	5.0	23.5	25	5.8	5.0	15.3	20	5.8	15	5.0	8.6
H#S-0301MV	3RAA-031E	-	-	-	-	14.2	5.0	25.8	30	6.3	5.0	15.9	20	6.3	15	5.0	8.6

UNIT MODEL	COMPRESSOR MODEL	REF. LIQ	LINE CONNECTIONS OD	RCVR STD DIAxHGT	RCVR CAP R-22 LBS.	EST. SHIP WTG. [LBS]	CABINET SIZE
H#S-0050MV	HAJ#-005E	3/8	7/8	6x12	12.8	261	SMALL
H#S-0070MV	KAN#-007E	3/8	7/8	6x12	12.8	280	SMALL
H#S-0071MV	KAE#-007E	3/8	7/8	6x12	12.8	280	SMALL
H#S-0100MV	KAR#-010E	3/8	7/8	6x12	12.8	282	SMALL
H#S-0200MV	KAK#-021E	1/2	7/8	6x18	19.2	294	SMALL
H#S-0201MV	ERC#-021E	1/2	7/8	6x18	19.2	356	SMALL
H#S-0300MV	ERF#-031E	1/2	1-1/8	6x23	24.6	493	MEDIUM
H#S-0301MV	3RAA-031E	1/2	1-1/8	6x23	24.6	493	MEDIUM

**PERFORMANCE DATA -Air Cooled  
Copeland Discus/ High Temperature-R22**

	AMB °F	-5°F MBH	SST KW	0°F MBH	SST KW	5°F MBH	SST KW	10°F MBH	SST KW	15°F MBH	SST KW	20°F MBH	SST KW	25°F MBH	SST KW	30°F MBH	SST KW	35°F MBH	SST KW	40°F MBH	SST KW	
																						UNIT
H#D-0500HV	2DC3-050E	90	18.7	2.8	21.8	3.0	25.1	3.3	28.6	3.5	32.3	3.7	35.9	4.0	40.1	4.2	44.1	4.5	48.4	4.7	52.9	5.0
		95	17.7	2.8	20.8	3.0	24.0	3.3	27.4	3.5	30.7	3.8	34.6	4.1	38.3	4.3	42.5	4.6	46.7	4.8	51.0	5.1
		105	15.6	2.8	18.5	3.1	21.6	3.4	24.8	3.6	28.0	3.9	31.6	4.2	35.4	4.5	39.0	4.8	42.9	5.1	47.3	5.4
H#D-0501HV	2DD3-050E	90	23.2	3.2	26.8	3.5	30.6	3.8	34.7	4.0	39.0	4.3	43.6	4.5	48.5	4.8	53.7	5.0	59.2	5.3	64.5	5.6
		95	21.9	3.3	25.4	3.6	29.5	3.8	33.4	4.1	37.6	4.4	42.1	4.6	46.9	4.9	51.5	5.2	56.8	5.5	62.4	5.7
		105	19.6	3.3	23.0	3.6	26.6	4.0	30.6	4.2	34.6	4.5	38.8	4.9	43.3	5.2	48.0	5.5	52.5	5.8	57.8	6.1
H#D-0750HV	2DL3-075E	90	29.8	4.0	34.4	4.4	39.3	4.7	44.4	5.1	49.8	5.4	55.4	5.7	61.4	6.0	67.7	6.3	74.5	6.6	81.0	7.0
		95	28.4	4.1	32.9	4.5	37.7	4.8	42.6	5.2	48.2	5.5	53.7	5.9	59.5	6.2	65.1	6.6	71.6	6.9	78.5	7.2
		105	25.9	4.2	30.2	4.6	34.7	5.0	39.4	5.4	44.2	5.8	49.3	6.2	54.7	6.6	60.4	7.0	66.4	7.3	72.9	7.7
H#D-0751HV	2DA3-075E	90	32.3	4.5	37.8	5.0	43.5	5.4	49.4	5.9	55.5	6.3	61.4	6.7	68.1	7.1	75.0	7.5	81.7	7.9	89.3	8.2
		95	30.6	4.5	36.1	5.0	41.3	5.5	47.1	6.0	53.2	6.4	59.4	6.9	65.9	7.3	72.1	7.7	79.1	8.1	85.7	8.5
		105	26.7	4.6	32.2	5.1	37.8	5.7	43.0	6.2	48.8	6.7	54.8	7.2	60.9	7.6	66.7	8.1	73.2	8.6	80.0	9.0
H#D-0752HV	3DA3A-075E	90	44.5	6.1	50.5	6.5	56.5	6.9	63.4	7.2	70.3	7.6	77.8	8.0	85.7	8.3	94.8	8.6	103.8	9.0	113.4	9.3
		95	42.7	6.3	48.5	6.6	54.3	7.0	61.1	7.4	67.8	7.8	75.6	8.2	83.3	8.6	91.5	9.0	100.2	9.3	109.5	9.7
		105	39.5	6.5	44.7	6.9	50.6	7.3	56.5	7.8	63.3	8.2	70.1	8.7	77.9	9.1	85.7	9.5	93.9	10.0	102.6	10.4
H#D-1000HV	3DB3A-100E	90	53.2	7.4	59.9	7.9	66.8	8.3	74.1	8.8	82.6	9.2	91.0	9.6	100.0	10.1	108.9	10.6	119.0	11.1	129.8	11.5
		95	51.5	7.6	57.8	8.0	64.4	8.5	72.0	9.0	79.7	9.5	87.8	9.9	96.5	10.4	105.8	10.9	115.7	11.4	125.2	12.0
		105	47.5	7.9	53.7	8.4	60.0	8.9	66.7	9.4	74.4	9.9	82.0	10.5	90.1	11.1	98.8	11.6	108.0	12.2	116.8	12.8
H#D-1200HV	3DF3A120E	90	62.3	8.7	69.6	9.3	78.1	9.8	86.9	10.4	96.4	10.9	107.4	11.5	118.3	12.1	129.9	12.7	141.1	13.4	153.9	14.0
		95	60.1	9.0	67.1	9.6	75.4	10.1	83.9	10.7	93.7	11.2	103.6	11.9	114.1	12.5	125.3	13.1	137.1	13.8	149.4	14.4
		105	55.8	9.5	62.7	10.0	70.5	10.6	78.3	11.2	86.9	11.9	96.8	12.5	106.6	13.2	117.0	13.9	128.0	14.6	139.6	15.3
H#D-1500HV	3DS3A150E	90	69.7	9.9	78.5	10.6	88.3	11.2	98.3	11.9	108.8	12.6	119.9	13.3	131.7	13.9	143.3	14.7	156.4	15.4	170.4	16.0
		95	67.6	10.2	76.1	10.9	85.6	11.6	95.2	12.3	105.3	13.0	116.0	13.7	127.4	14.4	139.4	15.1	152.2	15.8	164.5	16.6
		105	63.8	10.7	72.2	11.4	80.7	12.2	89.6	13.0	99.5	13.7	109.5	14.5	120.0	15.3	131.1	16.1	141.8	17.0	154.1	17.7

\* MIN CONTROL BREAKER IS 15 A  
CUSTOMER MUST SUPPLY 2 LINE VOLTAGES (CONTROL LINE IS 208 V/3/60)

UNIT MODEL	COMPRESSOR MODEL	208V/3/60						380V/3/50						460V/3/60*						575V/3/60*			
		COMP RLA	FAN FLA	MCA A	MIN BRKR A	COMP RLA	FAN FLA	MCA A	MIN BRKR A	COMP RLA	COMP BRKR A	FAN FLA	MIN BRKR A	COMP RLA	COMP BRKR A	FAN FLA	CONT. MCA A						
H#D-0500HV	2DC3-050E	22.3	2.5	33.4	4.0	10.4	2.5	18.5	2.0	10.4	1.5	2.5	6.1	7.7	1.5	2.5	6.1						
H#D-0501HV	2DD3-050E	22.3	5.0	35.9	4.0	10.5	5.0	21.1	2.5	10.5	1.5	5.0	8.6	7.9	1.5	5.0	8.6						
H#D-0750HV	2DL3-075E	31.6	5.0	47.5	5.0	13.8	5.0	25.3	3.0	13.8	2.0	5.0	8.6	13.2	2.0	5.0	8.6						
H#D-0751HV	2DA3-075E	32.0	10.0	53.0	6.0	14.1	10.0	30.6	4.0	14.1	2.0	10.0	13.6	13.3	2.0	10.0	13.6						
H#D-0752HV	3DA3-075E	41.0	10.0	64.3	7.0	20.0	10.0	38.0	4.0	20.0	3.0	10.0	13.6	16.5	2.5	10.0	13.6						
H#D-1000HV	3DB3-100E	43.6	10.0	67.5	7.0	20.0	10.0	38.0	4.0	20.0	3.0	10.0	13.6	16.5	2.5	10.0	13.6						
H#D-1200HV	3DF3-120E	48.2	10.0	73.3	8.0	23.6	10.0	42.5	5.0	23.6	3.0	10.0	13.6	-	-	-	-						
H#D-1500HV	3DS3-150E	59.6	10.0	87.5	9.0	29.0	10.0	49.3	5.0	29.0	4.0	10.0	13.6	23.6	3.0	10.0	13.6						

UNIT MODEL	COMPRESSOR MODEL	REF. LINE CONNECTIONS LIQ OD SUCT OD	RCVR STD DIAxHGT	RCVR CAP R-22 LBS.	EST. SHIP WGT. [LBS]	CABINET SIZE
H#D-0500HV	2DC3-050E	1/2 1-1/8	6x23	24.6	606	MEDIUM
H#D-0501HV	2DD3-050E	5/8 1-1/8	6x30	32.0	656	MEDIUM
H#D-0750HV	2DL3-075E	5/8 1-3/8	8-5/8x30	62.0	720	MEDIUM
H#D-0751HV	2DA3-075E	5/8 1-3/8	8-5/8x30	62.0	954	MEDIUM
H#D-0752HV	3DA3-075E	5/8 1-3/8	10-3/4x30	94.6	1,242	LARGE
H#D-1000HV	3DB3-100E	7/8 1-3/8	10-3/4x30	94.6	1,246	LARGE
H#D-1200HV	3DF3-120E	7/8 1-3/8	12x30	115.0	1,210	LARGE
H#D-1500HV	3DS3-150E	7/8 1-5/8	12x30	115.0	1,215	LARGE

**PERFORMANCE DATA -Air Cooled  
Copeland Semi-Hermetic / Medium Temperature R-404A**

UNIT MODEL	COMPRESSOR MODEL	AMB	-5°F	SST	0°F	SST	5°F	SST	10°F	SST	15°F	SST	20°F	SST	25°F	SST	30°F	SST	35°F	SST	40°F	SST	
		*F	MBH	KW	MBH	KW	MBH	KW	MBH	KW	MBH	KW	MBH	KW	MBH	KW	MBH	KW	MBH	KW	MBH	KW	
H#S-0050MS	HAJ#-005E	90	2.7	0.5	3.2	0.5	3.5	0.5	4.0	0.6	4.4	0.6	5.0	0.6	5.6	0.6	-	-	-	-	-	-	-
		95	2.6	0.5	3.0	0.5	3.3	0.5	3.7	0.6	4.2	0.6	4.7	0.6	5.2	0.6	-	-	-	-	-	-	-
		105	2.2	0.5	2.6	0.5	2.9	0.6	3.3	0.6	3.7	0.6	4.1	0.6	4.6	0.7	-	-	-	-	-	-	-
H#S-0100MS	KAR#-010E	90	5.2	0.9	5.9	1.0	6.6	1.0	7.3	1.1	8.2	1.1	9.1	1.2	10.2	1.2	-	-	-	-	-	-	-
		95	4.9	0.9	5.6	1.0	6.3	1.0	7.0	1.1	7.8	1.2	8.6	1.2	9.6	1.3	-	-	-	-	-	-	-
		105	4.2	0.9	4.9	1.0	5.5	1.1	6.2	1.1	6.9	1.2	7.7	1.3	8.7	1.3	-	-	-	-	-	-	-
H#S-0101MS	KAG#-010E	90	6.1	1.0	7.0	1.0	7.8	1.1	8.7	1.1	9.7	1.2	10.8	1.2	12.0	1.3	-	-	-	-	-	-	-
		95	5.8	1.0	6.6	1.0	7.4	1.1	8.3	1.1	9.2	1.2	10.3	1.3	11.5	1.3	-	-	-	-	-	-	-
		105	5.1	1.0	5.8	1.1	6.5	1.1	7.3	1.2	8.1	1.3	9.0	1.3	10.1	1.4	-	-	-	-	-	-	-
H#S-0200MS	KAK#-020E	90	8.2	1.4	9.0	1.4	10.1	1.5	11.4	1.6	12.8	1.7	14.1	1.7	15.4	1.8	-	-	-	-	-	-	-
		95	7.7	1.4	8.6	1.4	9.7	1.5	10.8	1.6	12.1	1.7	13.4	1.8	14.6	1.8	-	-	-	-	-	-	-
		105	6.9	1.4	7.6	1.5	8.5	1.6	9.6	1.7	10.8	1.8	11.9	1.8	12.9	1.9	-	-	-	-	-	-	-
H#S-0201MS	ERC#-021E	90	9.9	1.8	11.2	1.9	12.7	2.0	14.0	2.1	15.6	2.3	17.1	2.4	18.8	2.5	-	-	-	-	-	-	-
		95	9.2	1.8	10.6	1.9	11.8	2.0	13.3	2.2	14.6	2.3	16.3	2.4	17.8	2.6	-	-	-	-	-	-	-
		105	8.0	1.8	9.3	2.0	10.4	2.1	11.6	2.2	12.8	2.4	14.3	2.5	15.7	2.7	-	-	-	-	-	-	-
H#S-0300MS	ERF#-031E	90	14.8	2.5	16.8	2.6	18.9	2.8	20.9	3.0	23.3	3.1	25.6	3.3	28.4	3.4	-	-	-	-	-	-	-
		95	13.9	2.5	15.8	2.7	17.8	2.8	19.9	3.0	21.9	3.2	24.4	3.4	26.7	3.5	-	-	-	-	-	-	-
		105	12.2	2.6	14.0	2.7	15.8	2.9	17.7	3.1	19.5	3.3	21.7	3.5	24.1	3.7	-	-	-	-	-	-	-
H#S-0301MS	3RAA-031E	90	16.3	3.0	18.8	3.2	21.2	3.4	24.0	3.6	26.7	3.9	29.5	4.1	32.5	4.3	-	-	-	-	-	-	-
		95	15.4	3.0	17.5	3.2	20.0	3.4	22.4	3.7	25.2	3.9	27.9	4.2	30.7	4.4	-	-	-	-	-	-	-
		105	13.2	3.0	15.1	3.3	17.3	3.5	19.4	3.8	21.9	4.0	24.2	4.3	27.0	4.6	-	-	-	-	-	-	-
H#S-0400MS	NRB2-040E	90	18.2	3.4	20.8	3.7	23.4	3.9	26.2	4.2	29.5	4.4	32.6	4.7	35.9	4.9	-	-	-	-	-	-	-
		95	16.9	3.4	19.6	3.7	22.1	4.0	24.7	4.2	27.5	4.5	30.4	4.8	33.4	5.0	-	-	-	-	-	-	-
		105	14.8	3.4	17.0	3.7	19.3	4.0	21.9	4.3	24.3	4.6	26.9	4.8	29.5	5.1	-	-	-	-	-	-	-

\* MIN CONTROL BREAKER IS 15 A  
CUSTOMER MUST SUPPLY 2 LINE VOLTAGES (CONTROL LINE IS 208 V/3/60)

UNIT MODEL	COMPRESSOR MODEL	208V/1/60				208V/3/60				380V/3/50				460V/3/60*			
		COMP RLA	FAN FLA	MCA A	MIN BRKR A	COMP RLA	FAN FLA	MCA A	MIN BRKR A	COMP RLA	FAN FLA	MCA A	MIN BRKR A	COMP RLA	FAN FLA	MCA A	CONT. MCA A
H#S-0050MS	HAJ#-005E	3.7	2.5	10.1	15	2.2	2.5	8.3	15	-	-	-	-	-	-	-	-
H#S-0100MS	KAR#-010E	7.4	2.5	14.8	15	4.3	2.5	10.9	15	2.0	2.5	8.0	15	2.0	15	2.5	6.1
H#S-0101MS	KAG#-010E	-	-	-	-	4.3	2.5	10.9	15	2.2	2.5	8.3	15	2.2	15	2.5	6.1
H#S-0200MS	KAK#-021E	10.6	2.5	18.8	20	6.8	2.5	14.0	15	-	-	-	-	-	-	-	-
H#S-0201MS	ERC#-021E	-	-	-	-	8.8	2.5	16.5	20	3.5	2.5	9.9	15	3.5	15	2.5	6.1
H#S-0300MS	ERF#-031E	17.0	5.0	29.3	30	12.4	5.0	23.5	25	5.8	5.0	15.3	20	5.8	15	5.0	8.6
H#S-0301MS	3RAA#-031E	-	-	-	-	14.2	5.0	25.8	30	6.3	5.0	15.9	20	6.3	15	5.0	8.6
H#S-0400MS	NRB#-040E	-	-	-	-	21.8	5.0	35.3	40	11.3	5.0	22.1	25	11.3	15	5.0	8.6

UNIT MODEL	COMPRESSOR MODEL	REF. LINE CONNECTIONS LIQ OD	REF. LINE CONNECTIONS SUCT OD	RCVR STD DIAxHGT	RCVR CAP R-404A LBS.	EST. SHIP WGT. [LBS]	CABINET SIZE
H#S-0050MS	HAJ#-005E	3/8	7/8	6x12	11.1	281	SMALL
H#S-0100MS	KAR#-010E	3/8	7/8	6x12	11.1	282	SMALL
H#S-0101MS	KAG#-010E	3/8	7/8	6x12	11.1	282	SMALL
H#S-0200MS	KAK#-021E	1/2	7/8	6x18	16.7	294	SMALL
H#S-0201MS	ERC#-021E	1/2	7/8	6x18	16.7	356	SMALL
H#S-0300MS	ERF#-031E	1/2	1-1/8	6x23	21.4	493	MEDIUM
H#S-0301MS	3RAA#-031E	1/2	1-1/8	6x23	21.4	493	MEDIUM
H#S-0400MS	NRB#-040E	1/2	1-1/8	6x23	21.4	547	MEDIUM

**PERFORMANCE DATA -Air Cooled  
Copeland Discus/ High Temperature-R404A**

H#	D#	AMB °F	-5°F MBH	SST KW	0°F MBH	SST KW	5°F MBH	SST KW	10°F MBH	SST KW	15°F MBH	SST KW	20°F MBH	SST KW	25°F MBH	SST KW	30°F MBH	SST KW	35°F MBH	SST KW	40°F MBH	SST KW
H#D-0500HS	2DC3-050E	90	21.4	3.3	24.0	3.5	26.8	3.7	29.8	3.9	33.0	4.2	36.4	4.4	39.9	4.6	43.6	4.8	47.5	5.1	50.8	5.3
		95	20.2	3.3	22.6	3.5	25.5	3.8	28.4	4.0	31.4	4.2	34.6	4.5	37.9	4.7	41.4	5.0	45.0	5.2	-	-
		105	18.0	3.4	20.1	3.6	22.7	3.9	25.2	4.1	27.9	4.4	31.0	4.6	34.0	4.9	-	-	-	-	-	-
H#D-0501HS	2DD3-050E	90	26.7	3.8	29.8	4.1	33.6	4.3	37.4	4.6	41.4	4.8	45.6	5.1	50.7	5.3	55.3	5.6	60.2	5.8	65.2	6.1
		95	25.3	3.9	28.6	4.1	31.8	4.4	35.7	4.7	39.5	4.9	43.5	5.2	47.7	5.5	52.0	5.8	57.2	6.0	61.9	6.3
		105	22.9	4.0	25.4	4.3	28.6	4.6	32.0	4.8	35.3	5.1	38.8	5.4	42.9	5.7	46.7	6.0	50.6	6.3	-	-
H#D-0750HS	2DL3-075E	90	33.5	4.8	37.3	5.1	41.9	5.4	46.3	5.7	51.6	6.0	56.7	6.3	62.1	6.6	67.7	7.0	73.6	7.3	79.6	7.6
		95	31.8	4.9	35.8	5.2	39.7	5.5	44.4	5.8	48.9	6.1	53.6	6.5	59.3	6.8	64.8	7.1	70.1	7.5	75.8	7.8
		105	28.8	5.1	32.4	5.4	35.9	5.7	40.0	6.0	44.0	6.4	48.7	6.7	53.1	7.1	57.7	7.5	63.3	7.8	-	-
H#D-0751HS	2DA3-075E	90	38.8	5.6	43.5	6.0	47.9	6.3	53.2	6.7	58.3	7.0	63.7	7.4	69.3	7.8	75.2	8.1	81.4	8.5	87.9	8.9
		95	37.2	5.7	41.2	6.1	45.9	6.4	50.4	6.8	55.2	7.2	60.8	7.5	66.1	7.9	71.7	8.3	77.5	8.7	83.6	9.1
		105	33.4	5.9	37.0	6.3	41.3	6.6	45.3	7.0	50.1	7.4	54.5	7.9	59.1	8.3	64.7	8.7	-	-	-	-
H#D-0752HS	3DA3A-075E	90	46.9	6.6	52.5	7.0	58.2	7.4	64.8	7.8	71.2	8.2	78.7	8.6	85.9	8.9	94.4	9.3	102.3	9.6	110.5	10.0
		95	44.9	6.8	50.3	7.2	56.2	7.6	61.9	8.0	68.5	8.4	74.9	8.8	82.5	9.2	89.5	9.6	97.9	9.9	105.6	10.3
		105	41.5	7.0	45.9	7.5	51.2	8.0	56.7	8.4	62.7	8.8	68.2	9.3	74.9	9.7	81.0	10.2	88.3	10.5	94.8	11.0
H#D-1000HS	3DB3A-100E	90	55.3	8.1	61.9	8.6	68.2	9.1	75.7	9.6	82.8	10.1	90.3	10.6	99.2	11.1	107.5	11.6	116.2	12.1	125.4	12.5
		95	53.2	8.3	59.0	8.8	65.7	9.3	72.0	9.9	79.5	10.4	86.6	10.9	94.0	11.4	102.9	11.9	111.0	12.4	119.6	12.9
		105	48.0	8.6	53.8	9.2	59.8	9.7	65.4	10.3	72.1	10.9	78.2	11.5	85.6	12.0	92.4	12.6	-	-	-	-
H#D-1200HS	3DF3A120E	90	69.1	10.1	77.2	10.7	85.1	11.3	94.4	11.9	103.3	12.6	112.8	13.3	124.0	13.8	134.5	14.5	145.5	15.2	157.0	15.9
		95	66.0	10.3	73.6	11.0	81.9	11.6	89.8	12.3	99.2	12.9	108.1	13.6	117.4	14.3	128.6	14.9	138.9	15.6	149.6	16.4
		105	60.3	10.7	67.2	11.4	73.8	12.1	81.6	12.8	89.9	13.5	97.7	14.2	107.0	14.9	115.4	15.7	-	-	-	-
H#D-1500HS	3DS3A150E	90	75.9	11.3	83.9	12.0	93.3	12.6	102.5	13.4	112.1	14.1	122.3	14.9	134.4	15.5	145.7	16.3	157.5	17.1	167.7	18.0
		95	72.3	11.5	80.7	12.2	88.9	12.9	97.4	13.7	107.6	14.4	117.1	15.2	127.1	16.0	137.5	16.8	148.4	17.6	159.6	18.5
		105	66.0	11.9	72.9	12.7	80.9	13.5	88.4	14.3	97.3	15.1	105.6	15.9	115.6	16.7	-	-	-	-	-	-

\* MIN CONTROL BREAKER IS 15 A  
CUSTOMER MUST SUPPLY 2 LINE VOLTAGES (CONTROL LINE IS 208 V/3/60)  
460V/3/60\*

UNIT MODEL	COMPRESSOR MODEL	208V/3/60				380V/3/60				460V/3/60*				575V/3/60*			
		COMP RLA	FAN FLA	MCA A	MIN BRKR A	COMP RLA	FAN FLA	MCA A	MIN BRKR A	COMP RLA	COMP BRKR A	FAN FLA	CONT. MCA A	COMP RLA	COMP BRKR A	FAN FLA	CONT. MCA A
H#D-0500HS	2DC3-050E	22.3	2.5	33.4	40	10.4	2.6	18.6	20	10.4	15	2.5	6.1	7.7	15	2.5	6.1
H#D-0501HS	2DD3-050E	22.3	5.0	35.9	40	10.5	5.0	21.1	25	10.5	15	5.0	8.6	7.9	15	5.0	8.6
H#D-0750HS	2DL3-075E	31.6	5.0	47.5	50	13.8	5.0	25.3	30	13.8	20	5.0	8.6	13.2	20	5.0	8.6
H#D-0751HS	2DA3-075E	32.0	10.0	53.0	60	14.1	10.0	30.6	40	14.1	20	10.0	13.6	13.3	20	10.0	13.6
H#D-0752HS	3DA3-075E	41.0	10.0	64.3	70	20.0	10.0	38.0	40	20.0	30	10.0	13.6	16.5	25	10.0	13.6
H#D-1000HS	3DB3-100E	43.6	10.0	67.5	70	20.0	10.0	38.0	40	20.0	30	10.0	13.6	16.5	25	10.0	13.6
H#D-1200HS	3DF3-120E	48.2	10.0	73.3	80	23.6	10.0	42.5	50	23.6	30	10.0	13.6	-	-	-	-
H#D-1500HS	3DS3-150E	59.6	10.0	87.5	90	29.0	10.0	49.3	50	29.0	40	10.0	13.6	23.6	30	10.0	13.6

UNIT MODEL	COMPRESSOR MODEL	REF. LINE CONNECTIONS		RCVR STD DIAxHGT	RCVR CAP R-404A LBS.	EST. SHIP WGT. [LBS]	CABINET SIZE
		LIQ	OD SUCT OD				
H#D-0500HS	2DC3-050E	1/2	1-1/8	6x23	21.4	606	MEDIUM
H#D-0501HS	2DD3-050E	5/8	1-1/8	6x30	27.9	656	MEDIUM
H#D-0750HS	2DL3-075E	5/8	1-3/8	8-5/8x30	53.9	720	MEDIUM
H#D-0751HS	2DA3-075E	5/8	1-3/8	8-5/8x30	53.9	954	MEDIUM
H#D-0752HS	3DA3-075E	5/8	1-3/8	10-3/4x30	82.3	1,242	LARGE
H#D-1000HS	3DB3-100E	7/8	1-3/8	10-3/4x30	82.3	1,246	LARGE
H#D-1200HS	3DF3-120E	7/8	1-3/8	12x30	100.1	1,210	LARGE
H#D-1500HS	3DS3-150E	7/8	1-5/8	12x30	100.1	1,215	LARGE

**PERFORMANCE DATA -Air Cooled  
Copeland Semi-Hermetic / Low Temperature R-22**

H#S-0070LV	KAM#-007E	AMB	-40°F	SST	-35°F	SST	-30°F	SST	-25°F	SST	-20°F	SST	-15°F	SST	-10°F	SST	-5°F	SST	0°F	SST
		*F	MBH	KW	MBH	KW	MBH	KW	MBH	KW	MBH	KW	MBH	KW	MBH	KW	MBH	KW	MBH	KW
		90	1.6	0.5	1.9	0.5	2.4	0.5	2.8	0.6	3.3	0.6	3.8	0.7	4.4	0.7	5.1	0.8	5.8	0.8
		95	1.5	0.4	1.8	0.5	2.2	0.5	2.6	0.6	3.1	0.6	3.6	0.7	4.2	0.7	4.9	0.8	5.5	0.8
		105	1.2	0.4	1.6	0.5	1.9	0.5	2.4	0.6	2.8	0.6	3.3	0.7	3.8	0.8	4.4	0.8	5.1	0.9
H#S-0100LV	KAJ#-010E	90	2.2	0.6	2.7	0.7	3.2	0.7	3.7	0.8	4.3	0.8	5.0	0.9	5.8	1.0	6.6	1.0	7.5	1.1
		95	2.1	0.6	2.5	0.7	3.0	0.7	3.5	0.8	4.1	0.9	4.8	0.9	5.6	1.0	6.4	1.0	7.2	1.1
		105	1.8	0.6	2.2	0.7	2.6	0.7	3.1	0.8	3.7	0.9	4.4	0.9	5.0	1.0	5.8	1.1	6.6	1.2
H#S-0200LV	KAK#-020E	90	2.4	0.7	3.0	0.8	3.6	0.8	4.2	0.9	4.9	1.0	5.7	1.0	6.6	1.1	7.6	1.2	8.6	1.3
		95	2.3	0.7	2.8	0.8	3.4	0.8	4.0	0.9	4.7	1.0	5.4	1.0	6.3	1.1	7.2	1.2	8.3	1.3
		105	2.0	0.7	2.5	0.8	2.9	0.8	3.5	0.9	4.1	1.0	4.8	1.1	5.6	1.2	6.5	1.2	7.5	1.3
H#S-0201LV	EAD#-020E	90	3.5	0.9	4.3	1.0	5.1	1.2	6.1	1.3	7.1	1.4	8.3	1.5	9.5	1.6	10.8	1.8	12.2	1.9
		95	3.2	0.9	4.0	1.0	4.8	1.2	5.8	1.3	6.7	1.4	7.8	1.5	9.1	1.7	10.3	1.8	11.8	1.9
		105	2.8	0.9	3.5	1.0	4.2	1.2	5.1	1.3	6.0	1.4	7.1	1.6	8.1	1.7	9.4	1.8	10.6	2.0
H#S-0202LV	EAV#-021E	90	3.1	1.4	3.8	1.4	4.6	1.4	5.6	1.5	6.8	1.5	8.1	1.6	9.4	1.7	10.9	1.7	12.4	1.8
		95	3.0	1.4	3.6	1.4	4.4	1.5	5.3	1.5	6.4	1.6	7.7	1.7	9.0	1.7	10.4	1.8	11.9	1.8
		105	2.6	1.5	3.1	1.5	3.9	1.5	4.8	1.6	5.8	1.6	6.9	1.7	8.1	1.8	9.5	1.8	10.9	1.9
H#S-0250LV	LAH#-032E	90	5.6	1.5	6.7	1.7	8.1	1.9	9.8	2.1	11.7	2.3	13.8	2.6	16.0	2.9	18.1	3.1	20.5	3.4
		95	5.3	1.5	6.4	1.7	7.7	1.9	9.4	2.1	11.2	2.3	13.2	2.6	15.3	2.9	17.4	3.2	19.4	3.4
		105	4.6	1.5	5.6	1.6	6.8	1.8	8.3	2.1	10.0	2.3	11.9	2.6	13.6	2.9	15.6	3.1	17.3	3.4

\* MIN CONTROL BREAKER IS 15 A  
CUSTOMER MUST SUPPLY 2 LINE VOLTAGES (CONTROL LINE IS 208 V/3/60)

UNIT MODEL	COMPRESSOR MODEL	208V/1/60				208V/3/60				380V/3/50				460V/3/60*				
		COMP	FAN	MCA	MIN BRKR	COMP	FAN	MCA	MIN BRKR	COMP	FAN	MCA	MIN BRKR	COMP	COMP	FAN	CONT.	
		RLA	FLA	A	A	RLA	FLA	A	A	RLA	FLA	A	A	RLA	BRKR	A	FLA	MCA
H#S-0070LV	KAM#-007E	5.4	2.5	12.3	15	3.4	2.5	9.8	15	-	-	-	-	-	-	-	-	-
H#S-0100LV	KAJ#-010E	6.9	2.5	14.1	15	4.6	2.5	11.3	15	2.1	2.5	8.1	15	2.1	15	2.5	6.1	
H#S-0200LV	KAK#-021E	10.6	2.5	18.8	20	6.8	2.5	14.0	15	-	-	-	-	-	-	-	-	
H#S-0201LV	EAD#-021E	10.0	2.5	18.0	20	6.8	2.5	14.0	15	-	-	-	-	-	-	-	-	
H#S-0202LV	EAV#-021E	14.7	2.5	23.9	25	7.4	2.5	14.8	15	3.9	2.5	10.4	15	3.9	15	2.5	6.1	
H#S-0250LV	LAH#-032E	16.7	2.5	26.4	30	12.8	2.5	21.5	25	6.0	2.5	13.0	15	6.0	15	2.5	6.1	

UNIT MODEL	COMPRESSOR MODEL	REF. LINE CONNECTIONS LIQ OD	REF. LINE CONNECTIONS SUCT OD	RCVR STD DIAxHGT	RCVR CAP R-22 LBS.	EST. SHIP WGT. [LBS]	CABINET SIZE
H#S-0070LV	KAM#-007E	3/8	7/8	6x12	12.8	280	SMALL
H#S-0100LV	KAJ#-010E	3/8	7/8	6x12	12.8	282	SMALL
H#S-0200LV	KAK#-021E	1/2	7/8	6x18	19.2	294	SMALL
H#S-0201LV	EAD#-021E	1/2	7/8	6x18	19.2	351	SMALL
H#S-0202LV	EAV#-021E	1/2	7/8	6x18	19.2	356	SMALL
H#S-0250LV	LAH#-032E	1/2	1-1/8	6x18	19.2	502	SMALL



**PERFORMANCE DATA -Air Cooled  
Copeland Discus/ Low Temperature-R22**

H#	D#	AMB °F	-40°F	SST	-35°F	SST	-30°F	SST	-25°F	SST	-20°F	SST	-15°F	SST	-10°F	SST	-5°F	SST	0°F	SST
			MBH	KW	MBH	KW	MBH	KW	MBH	KW	MBH	KW	MBH	KW	MBH	KW	MBH	KW	MBH	KW
H#D-0300LV	2DF3-030E	90	8.1	2.0	9.8	2.3	11.8	2.5	13.8	2.8	16.1	3.0	18.6	3.2	21.4	3.5	24.6	3.7	27.9	4.0
		95	7.4	2.0	9.1	2.3	11.0	2.5	13.1	2.8	15.2	3.0	17.6	3.3	20.3	3.5	23.3	3.8	26.8	4.1
		105	6.1	1.9	7.8	2.2	9.6	2.5	11.4	2.8	13.6	3.1	15.8	3.3	18.3	3.6	21.1	3.9	24.3	4.2
H#D-0400LV	2DL3-040E	90	9.3	2.4	11.4	2.7	13.6	3.0	16.1	3.3	18.9	3.5	21.9	3.8	25.2	4.1	28.4	4.5	32.1	4.8
		95	8.7	2.4	10.6	2.7	12.8	3.0	15.2	3.3	17.8	3.6	20.7	3.9	23.9	4.2	27.2	4.5	30.5	4.9
		105	7.4	2.4	9.2	2.7	11.2	3.0	13.4	3.3	15.8	3.6	18.5	4.0	21.5	4.3	24.6	4.6	27.9	5.0
H#D-0600LV	2DA3-060E	90	11.2	2.9	13.5	3.2	16.4	3.5	19.3	3.8	22.8	4.1	26.3	4.4	30.1	4.8	34.3	5.1	38.8	5.4
		95	10.5	2.9	12.9	3.2	15.4	3.6	18.4	3.9	21.5	4.2	24.9	4.5	28.9	4.8	33.0	5.2	37.3	5.5
		105	9.0	2.9	11.1	3.3	13.5	3.6	16.1	3.9	19.2	4.3	22.3	4.6	25.7	5.0	29.8	5.3	33.9	5.7
H#D-0601LV	3DA3A-060E	90	14.4	3.5	17.1	3.9	20.3	4.3	23.9	4.6	27.6	5.0	32.0	5.3	36.5	5.7	41.5	6.1	47.0	6.5
		95	13.4	3.5	16.2	3.9	19.2	4.3	22.7	4.7	26.3	5.1	30.5	5.5	34.9	5.9	39.8	6.3	45.1	6.7
		105	11.5	3.5	14.0	3.9	17.1	4.4	20.4	4.8	23.8	5.2	27.5	5.7	32.0	6.1	36.5	6.5	41.4	7.0
H#D-0750LV	3DB3A-075E	90	18.1	4.2	21.4	4.7	25.2	5.1	29.0	5.6	33.2	6.0	38.1	6.5	43.2	7.0	48.4	7.5	54.5	8.0
		95	16.8	4.3	20.2	4.7	23.7	5.2	27.7	5.6	31.8	6.1	36.3	6.6	41.2	7.1	46.7	7.6	52.8	8.2
		105	14.3	4.3	17.3	4.8	20.9	5.3	24.5	5.8	28.7	6.3	33.1	6.8	37.8	7.4	43.1	7.9	48.6	8.5
H#D-0900LV	3DF3A-090E	90	21.3	5.2	25.6	5.7	30.5	6.1	35.5	6.7	41.5	7.2	47.5	7.8	54.6	8.3	61.6	8.9	69.2	9.5
		95	20.0	5.3	24.1	5.8	28.8	6.2	34.0	6.8	39.4	7.3	45.8	7.9	52.2	8.5	59.2	9.1	66.6	9.7
		105	17.7	5.4	21.4	5.9	25.4	6.4	30.3	7.0	35.7	7.6	41.4	8.2	47.5	8.8	54.7	9.5	61.9	10.1
H#D-1000LV	3DS3A-100E	90	22.7	5.8	27.6	6.3	32.8	6.8	38.2	7.4	44.5	8.0	50.9	8.6	57.9	9.2	65.5	9.9	73.8	10.6
		95	21.5	5.9	26.1	6.4	31.2	7.0	36.4	7.6	42.5	8.1	48.7	8.8	56.0	9.4	63.4	10.1	71.5	10.8
		105	19.2	6.1	23.5	6.6	27.8	7.2	33.0	7.8	38.7	8.4	44.5	9.1	50.8	9.8	57.8	10.5	65.4	11.3
H#D-1500LV	4DL3-150E	90	31.8	8.1	38.2	9.0	45.5	9.8	52.8	10.6	60.8	11.5	70.1	12.3	79.5	13.2	89.8	14.2	101.0	15.1
		95	29.5	8.3	35.7	9.1	42.9	10.0	50.0	10.9	58.4	11.7	66.8	12.6	76.0	13.6	86.0	14.6	96.9	15.6
		105	24.9	8.4	31.2	9.3	38.0	10.2	44.7	11.2	52.0	12.2	60.6	13.1	69.3	14.2	78.8	15.3	89.2	16.4
H#D-2200LV	4DT3-220E	90	37.6	9.7	45.5	10.8	53.4	11.8	62.0	12.7	70.7	13.7	80.2	14.6	90.9	15.7	102.2	16.9	115.9	18.2
		95	35.5	9.8	43.3	11.0	51.5	12.0	59.4	13.0	67.8	14.0	77.0	15.0	87.3	16.1	98.9	17.3	111.3	18.7
		105	31.6	10.0	39.0	11.2	46.3	12.4	53.6	13.5	62.0	14.5	70.5	15.6	80.0	16.8	90.7	18.0	101.9	19.5

\* MIN CONTROL BREAKER IS 15 A  
CUSTOMER MUST SUPPLY 2 LINE VOLTAGES (CONTROL LINE IS 208 V/3/60)

UNIT MODEL	COMPRESSOR MODEL	208V/1/60				208V/3/60				380V/3/50				460V/3/60*				575V/3/60*			
		COMP	FAN	MCA	MIN BRKR	COMP	FAN	MCA	MIN BRKR	COMP	FAN	MCA	MIN BRKR	COMP	COMP	FAN	CONT. MCA	COMP	COMP	FAN	CONT. MCA
		RLA	FLA	A	A	RLA	FLA	A	A	RLA	FLA	A	A	RLA	BRKR	FLA	A	RLA	BRKR	FLA	A
H#D-0300LV	2DF3-030E	25.8	2.5	37.8	40	16.8	2.5	26.5	30	8.1	2.5	15.6	20	8.1	15	2.5	6.1	6.7	15	2.5	6.1
H#D-0400LV	2DL3-040E	-	-	-	-	26.3	2.5	38.4	40	10.2	2.5	18.3	20	10.2	15	2.5	6.1	7.7	15	2.5	6.1
H#D-0600LV	2DB3-060E	-	-	-	-	28.2	5.0	43.3	50	13.3	5.0	24.6	25	13.3	20	5.0	8.6	9.6	15	5.0	8.6
H#D-0601LV	3DA3-060E	-	-	-	-	30.3	5.0	45.9	50	13.7	5.0	25.1	30	13.7	20	5.0	8.6	10.5	15	5.0	8.6
H#D-0750LV	3DB3-075E	-	-	-	-	31.5	5.0	47.4	50	16.1	5.0	28.1	30	16.1	25	5.0	8.6	11.0	15	5.0	8.6
H#D-0900LV	3DF3-090E	-	-	-	-	39.0	10.0	61.8	70	16.9	10.0	34.1	40	16.9	25	10.0	13.6	16.5	25	10.0	13.6
H#D-1000LV	3DS3-100E	-	-	-	-	42.0	10.0	65.5	70	18.6	10.0	36.3	40	18.6	25	10.0	13.6	16.8	25	10.0	13.6
H#D-1500LV	4DL3-150E	-	-	-	-	52.6	10.0	78.8	80	26.3	10.0	45.9	50	26.3	40	10.0	13.6	20.9	30	10.0	13.6
H#D-2200LV	4DT3-220E	-	-	-	-	66.0	10.0	95.5	100	33.0	10.0	54.3	60	33.0	50	10.0	13.6	24.2	40	10.0	13.6

UNIT MODEL	COMPRESSOR MODEL	REF. LINE CONNECTIONS		RCVR STD DIAxHGT	RCVR CAP R-22 LBS.	EST. SHIP WT. [LBS]	CABINET SIZE
		LIQ OD	SUCT OD				
H#D-0300LV	2DF3-030E	1/2	1-1/8	6x23	24.6	596	MEDIUM
H#D-0400LV	2DL3-040E	5/8	1-1/8	6x23	24.6	596	MEDIUM
H#D-0600LV	2DB3-060E	5/8	1-1/8	6x30	32.0	688	MEDIUM
H#D-0601LV	3DA3-060E	5/8	1-3/8	8-5/8x30	62.0	765	MEDIUM
H#D-0750LV	3DB3-075E	5/8	1-3/8	8-5/8x30	62.0	765	MEDIUM
H#D-0900LV	3DF3-090E	5/8	1-3/8	10-3/4x30	94.6	1,242	LARGE
H#D-1000LV	3DS3-100E	5/8	1-5/8	10-3/4x30	94.6	1,273	LARGE
H#D-1500LV	4DL3-150E	7/8	2-1/8	12x30	115.0	1,282	LARGE
H#D-2200LV	4DT3-220E	7/8	2-1/8	12x30	115.0	1,290	LARGE

**PERFORMANCE DATA -Air Cooled  
Copeland Semi-Hermetic / Low Temperature R-404A**

H#S-0050LS	KAN#-006E	AMB	-40°F	SST	-35°F	SST	-30°F	SST	-25°F	SST	-20°F	SST	-15°F	SST	-10°F	SST	-5°F	SST	0°F	SST
		*F	MBH	KW	MBH	KW	MBH	KW	MBH	KW	MBH	KW	MBH	KW	MBH	KW	MBH	KW	MBH	KW
		90	0.9	0.3	1.2	0.4	1.4	0.4	1.8	0.4	2.1	0.5	2.5	0.5	3.0	0.5	3.5	0.6	4.0	0.6
		95	0.8	0.3	1.0	0.3	1.3	0.4	1.6	0.4	2.0	0.5	2.3	0.5	2.8	0.5	3.2	0.6	3.7	0.6
		105	0.6	0.3	0.8	0.3	1.0	0.4	1.3	0.4	1.6	0.5	2.0	0.5	2.4	0.5	2.8	0.6	3.2	0.6
H#S-0070LS	KAM#-007E	90	1.8	0.5	2.1	0.6	2.6	0.6	3.0	0.7	3.6	0.7	4.1	0.8	4.7	0.8	5.5	0.9	6.1	0.9
		95	1.6	0.5	2.0	0.6	2.4	0.6	2.8	0.7	3.4	0.7	3.9	0.8	4.5	0.8	5.1	0.9	5.8	1.0
		105	1.3	0.5	1.6	0.6	2.0	0.6	2.5	0.7	2.9	0.7	3.4	0.8	3.9	0.9	4.5	0.9	5.1	1.0
H#S-0100LS	KAJ#-011E	90	2.5	0.7	3.0	0.8	3.6	0.8	4.2	0.9	4.8	1.0	5.5	1.0	6.3	1.1	7.1	1.2	8.0	1.3
		95	2.3	0.7	2.8	0.8	3.3	0.9	3.9	0.9	4.5	1.0	5.2	1.1	6.0	1.1	6.8	1.2	7.6	1.3
		105	2.0	0.7	2.4	0.8	2.9	0.9	3.4	0.9	3.9	1.0	4.6	1.1	5.2	1.2	5.9	1.3	6.7	1.3
H#S-0150LS	KAL#-016E	90	3.6	1.0	4.4	1.1	5.2	1.2	6.1	1.3	6.9	1.4	7.9	1.5	8.9	1.6	10.0	1.7	11.2	1.8
		95	3.3	1.0	4.1	1.1	4.9	1.2	5.7	1.3	6.5	1.4	7.4	1.5	8.4	1.6	9.4	1.7	10.5	1.8
		105	2.6	0.9	3.4	1.1	4.2	1.2	5.0	1.3	5.7	1.4	6.5	1.5	7.4	1.7	8.3	1.8	9.3	1.9
H#S-0200LS	EAV#-021E	90	4.3	1.2	5.2	1.3	6.2	1.5	7.4	1.6	8.8	1.8	10.1	1.9	11.5	2.1	13.2	2.3	14.7	2.5
		95	4.0	1.2	4.8	1.3	5.8	1.5	6.9	1.6	8.1	1.8	9.4	1.9	10.9	2.1	12.3	2.3	13.8	2.5
		105	3.4	1.2	4.2	1.3	5.0	1.5	6.0	1.6	7.1	1.8	8.2	2.0	9.5	2.1	10.8	2.3	12.2	2.5
H#S-0250LS	LAH#-032E	90	6.3	1.8	7.7	2.0	9.3	2.2	11.0	2.4	12.9	2.7	14.7	3.0	16.8	3.2	18.8	3.5	21.1	3.8
		95	5.7	1.7	7.0	1.9	8.6	2.2	10.3	2.4	11.9	2.7	13.8	2.9	15.8	3.2	17.6	3.5	19.9	3.8
		105	4.4	1.6	5.7	1.9	7.0	2.1	8.5	2.3	10.1	2.6	11.8	2.9	13.6	3.2	15.3	3.5	17.3	3.8

\* MIN CONTROL BREAKER IS 15 A  
CUSTOMER MUST SUPPLY 2 LINE VOLTAGES (CONTROL LINE IS 208 V/3/60)

UNIT MODEL	COMPRESSOR MODEL	208V/1/60				208V/3/60				380V/3/50				460V/3/60*				
		COMP	FAN	MCA	MIN BRKR	COMP	FAN	MCA	MIN BRKR	COMP	FAN	MCA	MIN BRKR	COMP	FAN	CONT.	MCA	
		RLA	FLA	A	A	RLA	FLA	A	A	RLA	FLA	A	A	RLA	BRKR	A	FLA	A
H#S-0050LS	KAN#-005E	3.6	2.5	10.0	15	2.2	2.5	8.3	15	-	-	-	-	-	-	-	-	-
H#S-0070LS	KAM#-007E	5.4	2.5	12.3	15	3.4	2.5	9.8	15	-	-	-	-	-	-	-	-	-
H#S-0100LS	KAJ#-010E	6.9	2.5	14.1	15	4.6	2.5	11.3	15	2.1	2.5	8.1	15	2.1	15	2.5	6.1	
H#S-0150LS	KAL#-015E	9.9	2.5	17.9	20	6.6	2.5	13.8	15	3.4	2.5	9.8	15	3.4	15	2.5	6.1	
H#S-0200LS	EAV#-021E	14.7	2.5	23.9	25	7.4	2.5	14.8	15	3.9	2.5	10.4	15	3.9	15	2.5	6.1	
H#S-0250LS	LAH#-032E	16.7	2.5	28.4	30	12.8	2.5	21.5	25	4.1	2.5	10.6	15	4.1	15	2.5	6.1	

UNIT MODEL	COMPRESSOR MODEL	REF. LINE CONNECTIONS		RCVR STD	RCVR CAP	EST. SHIP	CABINET
		LIQ OD	SUCT OD	DIAxHGT	R-404A LBS.	WT. [LBS]	SIZE
H#S-0050LS	KAN#-005E	3/8	7/8	6x12	11.1	280	SMALL
H#S-0070LS	KAM#-007E	3/8	7/8	6x12	11.1	280	SMALL
H#S-0100LS	KAJ#-010E	3/8	7/8	6x12	11.1	282	SMALL
H#S-0150LS	KAL#-015E	1/2	7/8	6x18	16.7	294	SMALL
H#S-0200LS	EAV#-021E	1/2	7/8	6x18	16.7	356	SMALL
H#S-0250LS	LAH#-032E	1/2	1-1/8	6x18	16.7	502	SMALL

**PERFORMANCE DATA -Air Cooled  
Copeland Discus/ Low Temperature-R404A**

H#D-0300LS	2DF3-030E	AMB	-40°F	SST	-35°F	SST	-30°F	SST	-25°F	SST	-20°F	SST	-15°F	SST	-10°F	SST	0°F	SST		
		*F	MBH	KW	MBH	KW	MBH	KW	MBH	KW	MBH	KW	MBH	KW	MBH	KW	MBH	KW		
		90	10.4	2.5	12.3	2.8	14.2	3.1	16.5	3.4	18.8	3.6	21.3	3.9	24.2	4.1	27.0	4.4	29.9	4.7
		95	9.7	2.5	11.5	2.8	13.5	3.1	15.6	3.4	18.0	3.7	20.3	3.9	22.8	4.2	25.4	4.5	28.5	4.7
		105	8.0	2.4	9.9	2.7	11.9	3.1	13.8	3.4	15.8	3.7	18.1	4.0	20.3	4.3	23.0	4.6	25.4	4.9
H#D-0400LS	2DL3-040E	90	12.4	2.9	14.7	3.2	17.0	3.5	19.4	3.8	22.3	4.1	25.1	4.5	28.1	4.8	31.3	5.1	34.3	5.5
		95	11.7	2.9	13.7	3.2	16.1	3.5	18.5	3.8	21.0	4.2	23.7	4.5	26.5	4.8	29.5	5.2	32.6	5.5
		105	10.1	2.8	12.0	3.2	14.2	3.5	16.4	3.9	18.6	4.2	21.0	4.6	23.9	4.9	26.5	5.3	29.3	5.7
H#D-0600LS	2DA3-060E	90	15.1	3.3	17.7	3.7	20.6	4.0	23.4	4.4	26.6	4.7	29.8	5.1	33.2	5.4	37.3	5.8	41.2	6.2
		95	14.3	3.3	16.7	3.7	19.4	4.1	22.1	4.4	25.2	4.8	28.2	5.2	31.8	5.5	35.3	5.9	38.9	6.3
		105	12.3	3.3	14.7	3.7	17.3	4.1	19.8	4.5	22.6	4.9	25.4	5.3	28.6	5.6	31.7	6.1	35.4	6.5
H#D-0601LS	3DA3A-060E	90	18.5	4.1	21.4	4.5	24.7	4.9	28.3	5.3	32.0	5.7	36.2	6.1	40.5	6.5	44.9	7.0	50.1	7.4
		95	17.6	4.1	20.5	4.5	23.5	5.0	27.0	5.4	30.8	5.8	34.5	6.2	38.9	6.6	43.2	7.1	47.7	7.6
		105	15.2	4.1	18.0	4.5	21.1	5.0	24.4	5.5	27.6	5.9	31.3	6.4	35.0	6.9	39.2	7.4	43.2	7.9
H#D-0750LS	3DB3A-075E	90	21.6	4.8	25.3	5.3	28.9	5.8	32.7	6.3	37.2	6.8	41.7	7.3	46.4	7.9	51.5	8.4	56.9	9.0
		95	20.4	4.9	24.0	5.4	27.5	5.9	31.5	6.4	35.5	6.9	39.7	7.5	44.7	8.0	49.5	8.6	54.6	9.2
		105	18.0	4.8	21.2	5.4	24.8	6.0	28.3	6.6	32.3	7.1	36.2	7.7	40.3	8.3	45.0	8.9	49.5	9.6
H#D-0900LS	3DF3A-090E	90	26.9	5.8	31.3	6.3	36.1	6.9	41.0	7.5	46.7	8.1	52.9	8.7	59.1	9.4	65.7	10.0	73.4	10.7
		95	25.5	5.8	29.7	6.4	34.4	7.0	39.5	7.6	44.6	8.3	50.5	8.9	56.4	9.6	63.3	10.2	70.0	10.9
		105	22.8	5.9	26.9	6.5	31.0	7.2	35.7	7.9	40.8	8.5	45.8	9.3	51.6	10.0	57.2	10.7	63.8	11.4
H#D-1000LS	3DS3A-100E	90	30.4	6.5	35.3	7.2	40.3	7.9	46.1	8.5	51.9	9.3	58.5	10.0	65.0	10.7	71.8	11.4	79.7	12.1
		95	28.7	6.6	33.5	7.2	38.7	7.9	43.9	8.7	49.9	9.4	55.7	10.1	61.9	10.9	69.0	11.6	75.8	12.4
		105	25.5	6.6	30.0	7.3	34.5	8.1	39.7	8.9	44.8	9.7	50.6	10.4	56.2	11.3	62.7	12.0	68.8	12.8
H#D-1001LS	4DA3-101E	90	31.3	6.8	37.1	7.6	43.0	8.3	48.6	9.0	55.0	9.6	61.9	10.3	69.5	10.9	77.0	11.6	86.2	12.3
		95	29.1	6.8	35.0	7.6	40.8	8.4	46.7	9.1	53.0	9.8	59.1	10.5	66.3	11.2	74.2	11.9	82.1	12.7
		105	24.8	6.5	30.8	7.5	36.1	8.4	41.8	9.3	47.7	10.1	53.9	10.9	60.5	11.7	66.9	12.5	74.6	13.2
H#D-1500LS	4DL3-150E	90	41.4	9.2	48.8	10.1	55.7	11.1	63.2	11.9	71.1	12.8	78.9	13.7	87.1	14.6	97.0	15.4	106.9	16.4
		95	39.8	9.3	46.5	10.3	53.7	11.2	60.4	12.1	68.0	13.0	75.3	14.0	84.0	14.9	92.6	15.9	102.0	16.9
		105	35.3	9.2	42.0	10.3	48.2	11.4	54.9	12.4	61.9	13.4	68.5	14.5	76.5	15.5	84.2	16.5	92.7	17.7
H#D-2200LS	4DT3-220E	90	48.3	10.5	56.4	11.7	64.7	12.9	74.0	14.0	82.7	15.2	91.8	16.3	101.3	17.5	111.2	18.6	121.5	19.9
		95	44.9	10.5	53.5	11.7	61.6	13.0	69.8	14.2	78.3	15.4	87.0	16.6	97.0	17.7	106.5	19.0	116.5	20.2
		105	38.3	10.2	46.8	11.6	54.5	13.0	62.3	14.4	70.2	15.7	78.4	17.0	87.8	18.3	96.6	19.6	105.8	21.0

\* MIN CONTROL BREAKER IS 15 A  
CUSTOMER MUST SUPPLY 2 LINE VOLTAGES (CONTROL LINE IS 208 V/3/60)

UNIT MODEL	COMPRESSOR MODEL	208V/1/60				208V/3/60				380V/3/50				460V/3/60*				575V/3/60*			
		COMP RLA	FAN FLA	MCA A	MIN BRKR A	COMP RLA	FAN FLA	MCA A	MIN BRKR A	COMP RLA	FAN FLA	MCA A	MIN BRKR A	COMP RLA	COMP BRKR A	FAN FLA	CONT. MCA A	COMP RLA	COMP BRKR A	FAN FLA	CONT. MCA A
H#D-0300LS	2DF3-030E	25.8	2.5	37.8	40	16.8	2.5	26.5	30	8.1	2.5	15.6	20	8.1	15	2.5	6.1	6.7	15	2.5	6.1
H#D-0400LS	2DL3-040E	-	-	-	-	26.3	2.5	38.4	40	10.2	2.5	18.3	20	10.2	15	2.5	6.1	7.7	15	2.5	6.1
H#D-0600LS	2DB3-060E	-	-	-	-	28.2	3.0	43.3	50	13.3	3.0	24.6	25	13.3	20	5.0	8.6	9.6	15	5.0	8.6
H#D-0601LS	3DA3-060E	-	-	-	-	30.3	3.0	45.9	50	13.7	3.0	25.1	30	13.7	20	5.0	8.6	10.5	15	5.0	8.6
H#D-0750LS	3DB3-075E	-	-	-	-	31.5	3.0	47.4	50	16.1	3.0	28.1	30	16.1	25	5.0	8.6	11.0	15	5.0	8.6
H#D-0900LS	3DF3-090E	-	-	-	-	39.0	4.0	61.8	70	16.9	4.0	34.1	40	16.9	25	10.0	13.6	16.5	25	10.0	13.6
H#D-1000LS	3DS3-100E	-	-	-	-	42.0	4.0	65.5	70	18.6	4.0	36.3	40	18.6	25	10.0	13.6	16.8	25	10.0	13.6
H#D-1001LS	4DA3-101E	-	-	-	-	45.2	4.0	69.5	70	22.6	4.0	41.3	50	22.6	30	10.0	13.6	17.5	25	10.0	13.6
H#D-1500LS	4DL3-150E	-	-	-	-	52.6	5.0	78.8	80	26.3	5.0	45.9	50	26.3	40	10.0	13.6	20.9	30	10.0	13.6
H#D-2200LS	4DT3-220E	-	-	-	-	66.0	5.0	95.5	100	33.0	5.0	54.3	60	33.0	50	10.0	13.6	24.2	40	10.0	13.6

UNIT MODEL	COMPRESSOR MODEL	REF. LINE CONNECTIONS LIQ OD	SUCT OD	RCVR STD DIAxHGT	RCVR CAP R-404A LBS.	EST. SHIP WGT. [LBS]	CABINET SIZE
H#D-0300LS	2DF3-030E	1/2	1-1/8	6x23	21.4	598	MEDIUM
H#D-0400LS	2DL3-040E	5/8	1-1/8	6x23	21.4	596	MEDIUM
H#D-0600LS	2DB3-060E	5/8	1-1/8	6x30	27.9	655	MEDIUM
H#D-0601LS	3DA3-060E	5/8	1-3/8	8-5/8x30	53.9	765	MEDIUM
H#D-0750LS	3DB3-075E	5/8	1-3/8	8-5/8x30	53.9	765	MEDIUM
H#D-0900LS	3DF3-090E	5/8	1-3/8	10-3/4x30	82.3	1,242	LARGE
H#D-1000LS	3DS3-100E	5/8	1-5/8	10-3/4x30	82.3	1,273	LARGE
H#D-1001LS	4DA3-101E	7/8	2-1/8	12x30	100.1	1,278	LARGE
H#D-1500LS	4DL3-150E	7/8	2-1/8	12x30	100.1	1,282	LARGE
H#D-2200LS	4DT3-220E	7/8	2-1/8	12x30	100.1	1,290	LARGE

**PERFORMANCE DATA -Air Cooled  
Copeland Scroll/ Medium Temperature-R22**

UNIT MODEL	COMPRESSOR MODEL	AMB	5°F	SST	0°F	SST	5°F	SST	10°F	SST	15°F	SST	20°F	SST	25°F	SST	30°F	SST	35°F	SST	40°F	SST
		*F	MBH	KW	MBH	KW	MBH	KW	MBH	KW	MBH	KW	MBH	KW	MBH	KW	MBH	KW	MBH	KW	MBH	KW
H#Z-0200MV	ZS15K4E	90	9.6	1.6	10.7	1.6	11.8	1.7	13.0	1.8	14.4	1.8	15.8	1.9	17.4	2.0	19.0	2.1	20.7	2.2	22.5	2.3
		95	9.3	1.6	10.4	1.7	11.5	1.8	12.7	1.8	14.0	1.9	15.4	2.0	16.9	2.1	18.5	2.2	20.1	2.3	21.8	2.4
		105	8.8	1.8	9.8	1.9	10.8	1.9	12.0	2.0	13.3	2.1	14.6	2.2	16.0	2.3	17.4	2.4	19.1	2.5	20.7	2.6
H#Z-0250MV	ZS19K4E	90	12.1	1.9	13.5	2.0	15.0	2.0	16.6	2.1	18.3	2.2	20.2	2.3	22.1	2.4	24.3	2.5	26.6	2.6	28.9	2.8
		95	11.8	2.0	13.1	2.1	14.6	2.1	16.2	2.2	17.9	2.3	19.7	2.4	21.5	2.5	23.6	2.6	25.9	2.7	28.1	2.9
		105	11.2	2.2	12.5	2.2	13.8	2.3	15.3	2.4	16.9	2.5	18.6	2.6	20.5	2.7	22.3	2.8	24.5	2.9	26.7	3.1
H#Z-0300MV	ZS21K4E	90	13.5	1.9	15.0	2.0	16.7	2.0	18.5	2.1	20.4	2.2	22.4	2.3	24.6	2.4	27.0	2.5	29.5	2.7	32.0	2.8
		95	13.1	2.0	14.6	2.1	16.3	2.1	18.0	2.2	19.9	2.3	21.9	2.4	24.0	2.5	26.3	2.6	28.7	2.8	31.4	2.9
		105	12.5	2.2	13.9	2.3	15.4	2.3	17.0	2.4	18.8	2.5	20.7	2.6	22.8	2.7	24.9	2.8	27.2	2.9	29.6	3.1
H#Z-0350MV	ZS26K4E	90	16.5	2.4	18.3	2.5	20.3	2.6	22.4	2.7	24.7	2.9	27.2	3.0	29.8	3.1	32.5	3.3	35.3	3.5	38.4	3.7
		95	16.2	2.5	17.9	2.6	19.8	2.7	21.9	2.9	24.0	3.0	26.5	3.1	28.9	3.3	31.8	3.4	34.6	3.6	37.5	3.8
		105	15.7	2.8	17.2	2.9	18.9	3.0	20.8	3.1	22.7	3.3	25.0	3.4	27.4	3.5	29.9	3.7	32.5	3.8	35.3	4.0
H#Z-0400MV	ZS30K4E	90	19.2	2.7	21.3	2.8	23.8	2.9	26.4	3.0	29.2	3.1	32.1	3.3	35.3	3.5	38.5	3.6	42.1	3.8	45.6	4.0
		95	18.8	2.8	20.8	2.9	23.1	3.0	25.7	3.1	28.4	3.3	31.2	3.4	34.4	3.6	37.7	3.8	41.0	3.9	44.7	4.1
		105	18.4	3.1	20.1	3.2	22.1	3.3	24.4	3.4	26.9	3.6	29.6	3.7	32.4	3.9	35.5	4.1	38.9	4.2	42.2	4.4
H#Z-0500MV	ZS38K4E	90	23.4	3.3	26.0	3.5	28.9	3.6	32.0	3.8	35.1	3.9	38.7	4.1	42.3	4.4	46.1	4.6	50.2	4.9	54.5	5.1
		95	22.9	3.5	25.4	3.6	28.1	3.8	31.1	3.9	34.2	4.1	37.7	4.3	41.1	4.5	45.1	4.7	49.1	5.0	53.3	5.3
		105	22.0	3.9	24.3	4.1	26.8	4.2	29.5	4.3	32.5	4.5	35.5	4.7	39.0	4.9	42.4	5.1	46.1	5.4	50.4	5.6
H#Z-0600MV	ZS45K4E	90	28.0	4.1	31.3	4.2	34.8	4.4	38.4	4.6	42.5	4.8	46.9	5.0	51.4	5.2	56.1	5.5	61.2	5.8	66.5	6.1
		95	27.3	4.3	30.5	4.4	33.9	4.6	37.4	4.8	41.4	5.0	45.7	5.2	50.0	5.4	54.6	5.7	59.8	6.0	65.0	6.3
		105	26.0	4.8	28.9	4.9	32.1	5.1	35.6	5.3	39.1	5.5	43.1	5.7	47.1	5.9	51.7	6.2	56.3	6.4	61.2	6.8
H#Z-0750MV	ZS56K4E	90	32.9	5.4	36.8	5.6	40.8	5.9	45.3	6.1	49.9	6.4	54.8	6.7	60.0	7.0	65.6	7.3	71.5	7.7	77.8	8.0
		95	32.0	5.5	35.9	5.8	39.7	6.1	44.1	6.4	48.5	6.7	53.6	6.9	58.7	7.2	64.1	7.6	69.8	7.9	75.9	8.2
		105	30.5	5.8	33.9	6.2	37.8	6.5	41.7	6.8	46.1	7.1	50.5	7.5	55.2	7.8	60.2	8.1	65.5	8.5	71.2	8.9
H#Z-1000MV	ZS75K4E	90	47.2	7.5	52.9	7.8	59.0	8.1	65.3	8.5	72.3	8.8	79.3	9.3	86.5	9.7	94.4	10.1	102.0	10.6	109.8	11.2
		95	46.1	7.8	51.2	8.2	57.2	8.5	63.3	8.9	70.3	9.2	77.2	9.6	84.9	10.0	92.3	10.5	100.0	11.0	107.9	11.5
		105	42.7	8.6	47.3	9.0	52.9	9.3	59.2	9.6	65.5	10.1	72.7	10.4	79.8	10.8	87.2	11.3	94.9	11.8	103.4	12.2
H#Z-1300MV	ZS92K4E	90	57.3	9.1	64.0	9.5	71.4	9.9	79.0	10.4	87.1	10.9	96.4	11.3	105.7	11.8	115.5	12.3	125.9	12.9	136.0	13.6
		95	56.2	9.4	62.4	9.9	69.5	10.3	76.8	10.8	85.2	11.2	93.6	11.7	102.6	12.3	112.1	12.8	122.1	13.4	132.6	14.0
		105	53.3	10.1	59.0	10.7	65.6	11.2	72.4	11.7	80.2	12.2	88.0	12.7	96.3	13.3	105.8	13.8	115.1	14.4	124.8	15.1
H#Z-1500MV	ZS11M4E	90	65.9	11.5	73.2	12.1	81.6	12.6	90.3	13.1	99.6	13.8	110.2	14.3	120.8	14.9	132.1	15.6	143.9	16.3	155.4	17.2
		95	64.3	11.9	71.3	12.5	79.5	13.0	87.8	13.7	97.4	14.2	107.1	14.8	117.3	15.5	128.2	16.2	139.6	17.0	151.5	17.7
		105	61.0	12.8	67.5	13.5	75.0	14.1	82.8	14.8	91.6	15.4	100.6	16.1	110.0	16.9	120.0	17.6	130.5	18.4	141.5	19.2

\* MIN CONTROL BREAKER IS 15 A  
CUSTOMER MUST SUPPLY 2 LINE VOLTAGES (CONTROL LINE IS 208 V/3/60)

UNIT MODEL	COMPRESSOR MODEL	208V/1/60				208V/3/60				380V/3/50				460V/3/60*				575V/3/60*			
		COMP	FAN	MCA	MIN BRKR	COMP	FAN	MCA	MIN BRKR	COMP	FAN	MCA	MIN BRKR	COMP	BRKR	FAN	MCA	COMP	BRKR	FAN	CONT. MCA
H#Z-0200MV	ZS15K4E	13.6	2.5	22.5	25	9.3	2.5	17.1	20	4.3	2.5	10.9	15	4.3	15	2.5	6.1	-	-	-	-
H#Z-0250MV	ZS19K4E	16.4	2.5	26.0	30	9.7	2.5	17.6	20	5.0	2.5	11.8	15	5.0	15	2.5	6.1	-	-	-	-
H#Z-0300MV	ZS21K4E	16.4	2.5	26.0	30	11.1	2.5	19.4	20	5.7	2.5	12.6	15	5.7	15	2.5	6.1	4.3	15	2.5	6.1
H#Z-0350MV	ZS26K4E	20.7	2.5	31.4	40	13.6	2.5	22.5	25	7.1	2.5	14.4	15	7.1	15	2.5	6.1	5.0	15	2.5	6.1
H#Z-0400MV	ZS30K4E	26.8	5.0	41.5	50	15.0	5.0	26.8	30	8.2	5.0	18.3	20	8.2	15	5.0	8.6	6.8	15	5.0	8.6
H#Z-0500MV	ZS38K4E	31.8	5.0	47.8	50	21.4	5.0	34.8	40	9.6	5.0	20.0	25	9.6	15	5.0	8.6	7.9	15	5.0	8.6
H#Z-0600MV	ZS45K4E	-	-	-	-	23.9	5.0	37.9	40	9.3	5.0	19.6	20	9.3	15	5.0	8.6	7.9	15	5.0	8.6
H#Z-0750MV	ZS56K4E	-	-	-	-	30.9	5.0	46.6	50	16.2	5.0	28.3	30	16.2	25	5.0	8.6	11.8	15	5.0	8.6
H#Z-1000MV	ZS75K4E	-	-	-	-	44.9	10.0	69.1	70	21.7	10.0	40.1	50	21.7	30	10.0	13.6	16.6	25	10.0	13.6
H#Z-1300MV	ZS92K4E	-	-	-	-	54.4	10.0	81.0	90	25.8	10.0	45.3	50	25.8	40	10.0	13.6	20.6	30	10.0	13.6
H#Z-1500MV	ZS11M4E	-	-	-	-	60.0	10.0	88.0	90	28.2	10.0	48.3	50	28.2	40	10.0	13.6	22.5	30	10.0	13.6

UNIT MODEL	COMPRESSOR MODEL	REF. LINE CONNECTIONS		RCVR STD DIAxHGT	RCVR CAP R-22 LBS.	EST. SHIP WGT. [LBS]	CABINET SIZE
		LIQ OD	SUCT OD				
H#Z-0200MV	ZS15K4E	1/2	1-1/8	6x18	19.2	263	SMALL
H#Z-0250MV	ZS19K4E	1/2	1-1/8	6x23	24.6	381	MEDIUM
H#Z-0300MV	ZS21K4E	1/2	1-1/8	6x23	24.6	381	MEDIUM
H#Z-0350MV	ZS26K4E	1/2	1-1/8	6x23	24.6	384	MEDIUM
H#Z-0400MV	ZS30K4E	5/8	1-1/8	6x30	32.0	450	MEDIUM
H#Z-0500MV	ZS38K4E	5/8	1-1/8	6x30	32.0	460	MEDIUM
H#Z-0600MV	ZS45K4E	5/8	1-3/8	8-5/8x30	62.0	515	MEDIUM
H#Z-0750MV	ZS56K4E	5/8	1-3/8	8-5/8x30	62.0	645	MEDIUM
H#Z-1000MV	ZS75K4E	5/8	1-3/8	10-3/4x30	94.6	889	LARGE
H#Z-1300MV	ZS92K4E	7/8	1-5/8	12x30	115.0	1,087	LARGE
H#Z-1500MV	ZS11M4E	7/8	1-5/8	12x30	115.0	1,192	LARGE

**PERFORMANCE DATA -Air Cooled  
Copeland Scroll/ Medium Temperature-R404A**

UNIT MODEL	COMPRESSOR MODEL	AMB	5°F	SST	0°F	SST	5°F	SST	10°F	SST	15°F	SST	20°F	SST	25°F	SST	30°F	SST	35°F	SST	40°F	SST
		*F	MBH	KW	MBH	KW	MBH	KW	MBH	KW	MBH	KW	MBH	KW	MBH	KW	MBH	KW	MBH	KW	MBH	KW
H#Z-0200MS	ZS15K4E	90	10.6	1.8	11.7	1.8	12.9	1.9	14.2	2.0	15.4	2.1	16.9	2.2	18.2	2.3	19.8	2.3	21.3	2.5	23.1	2.5
		95	10.1	1.9	11.2	1.9	12.3	2.0	13.5	2.1	14.8	2.2	16.1	2.2	17.5	2.3	18.9	2.4	20.5	2.5	22.0	2.6
		105	9.2	2.0	10.2	2.1	11.2	2.2	12.3	2.3	13.4	2.3	14.6	2.4	15.9	2.5	17.1	2.6	18.5	2.7	20.1	2.8
H#Z-0250MS	ZS19K4E	90	13.3	2.1	14.9	2.1	16.4	2.2	18.1	2.3	19.8	2.4	21.7	2.5	23.7	2.6	25.6	2.7	27.9	2.8	30.2	2.9
		95	12.9	2.1	14.3	2.2	15.7	2.3	17.3	2.4	19.0	2.5	20.8	2.6	22.7	2.7	24.7	2.8	26.8	2.9	28.8	3.0
		105	11.8	2.3	13.0	2.4	14.4	2.5	15.8	2.6	17.3	2.7	19.0	2.8	20.7	2.9	22.3	3.0	24.2	3.1	26.2	3.2
H#Z-0300MS	ZS21K4E	90	14.8	2.1	16.4	2.2	18.1	2.3	19.9	2.4	21.8	2.5	23.7	2.6	25.9	2.7	28.2	2.8	30.7	2.9	33.0	3.1
		95	14.2	2.2	15.7	2.3	17.3	2.4	19.1	2.5	20.9	2.6	22.9	2.7	25.0	2.8	26.9	2.9	29.2	3.0	31.7	3.1
		105	13.0	2.4	14.4	2.5	15.8	2.6	17.3	2.7	19.0	2.8	20.7	2.9	22.6	3.0	24.5	3.1	26.6	3.2	28.8	3.3
H#Z-0350MS	ZS26K4E	90	17.9	2.7	19.8	2.8	21.9	2.9	24.1	3.0	26.2	3.2	28.7	3.3	31.0	3.4	33.8	3.6	36.4	3.7	39.5	3.9
		95	17.2	2.8	19.0	2.9	20.9	3.0	23.0	3.1	25.3	3.3	27.4	3.4	29.9	3.5	32.2	3.7	35.0	3.8	37.5	4.0
		105	15.8	3.0	17.5	3.1	19.2	3.3	21.0	3.4	22.8	3.5	24.9	3.7	27.1	3.8	29.2	4.0	31.7	4.1	-	-
H#Z-0400MS	ZS30K4E	90	21.0	3.0	23.4	3.1	26.0	3.2	28.8	3.4	31.4	3.5	34.5	3.7	37.7	3.8	41.0	4.0	44.1	4.2	47.7	4.4
		95	20.0	3.1	22.3	3.3	24.8	3.4	27.4	3.5	30.2	3.6	33.2	3.8	35.9	4.0	39.2	4.1	42.6	4.3	45.7	4.5
		105	18.3	3.4	20.1	3.6	22.2	3.7	24.5	3.8	27.0	4.0	29.6	4.1	32.5	4.3	35.5	4.4	38.6	4.6	41.5	4.8
H#Z-0500MS	ZS38K4E	90	25.6	3.9	28.3	4.0	31.2	4.2	34.1	4.4	37.4	4.5	40.9	4.7	44.2	5.0	48.2	5.2	51.8	5.4	55.6	5.7
		95	24.5	4.0	27.0	4.2	29.8	4.4	32.8	4.5	35.6	4.8	39.0	4.9	42.5	5.1	45.8	5.4	49.7	5.6	53.3	5.9
		105	22.2	4.5	24.4	4.6	26.9	4.8	29.5	5.0	32.3	5.2	35.3	5.4	38.5	5.6	41.3	5.8	44.8	6.0	48.0	6.3
H#Z-0600MS	ZS45K4E	90	31.0	4.6	34.3	4.8	37.5	5.0	41.2	5.2	45.2	5.4	49.4	5.6	53.4	5.9	58.2	6.1	62.6	6.4	67.9	6.6
		95	29.8	4.7	32.9	4.9	36.3	5.1	39.5	5.4	43.2	5.6	47.2	5.8	51.5	6.1	55.5	6.3	60.2	6.6	64.6	6.9
		105	27.3	5.1	30.1	5.4	33.1	5.6	36.3	5.8	39.6	6.0	43.2	6.3	46.5	6.5	50.4	6.8	54.6	7.0	58.4	7.3
H#Z-0750MS	ZS56K4E	90	36.1	6.1	39.9	6.3	43.7	6.6	48.0	6.9	52.2	7.2	57.1	7.4	61.7	7.8	66.5	8.1	72.3	8.4	77.6	8.7
		95	34.6	6.3	38.3	6.5	41.8	6.8	45.9	7.1	50.3	7.4	54.4	7.7	59.3	8.0	63.8	8.3	68.5	8.7	74.3	9.0
		105	31.6	6.7	34.8	7.0	38.2	7.3	41.9	7.5	45.7	7.8	49.3	8.2	53.6	8.5	57.4	8.8	62.2	9.1	-	-
H#Z-1000MS	ZS75K4E	90	51.2	8.4	57.3	8.8	63.1	9.3	69.9	9.7	76.2	10.2	83.3	10.7	89.8	11.2	97.1	11.7	103.4	12.3	110.4	12.7
		95	48.7	8.8	54.4	9.2	60.5	9.6	66.3	10.1	73.1	10.5	79.2	11.1	86.3	11.5	92.5	12.1	99.5	12.6	105.5	13.1
		105	44.6	9.3	49.4	9.8	54.1	10.3	59.8	10.7	65.9	11.2	71.4	11.8	78.0	12.2	83.6	12.8	90.2	13.3	-	-
H#Z-1300MS	ZS92K4E	90	64.0	10.2	70.8	10.6	77.5	11.1	85.3	11.6	93.6	12.0	101.6	12.6	110.9	13.0	119.6	13.6	129.9	14.1	139.4	14.7
		95	61.5	10.6	68.0	11.0	74.9	11.5	81.6	12.0	89.5	12.5	97.8	12.9	105.6	13.5	114.9	14.0	123.4	14.6	133.7	15.2
		105	56.2	11.3	62.0	11.8	68.1	12.3	74.7	12.8	81.7	13.3	89.1	13.8	95.8	14.4	104.0	15.0	112.7	15.5	120.7	16.2
H#Z-1500MS	ZS11M4E	90	71.9	12.8	79.5	13.4	87.7	13.9	95.6	14.6	104.8	15.1	113.6	15.8	123.9	16.4	133.5	17.1	143.4	17.8	153.7	18.6
		95	69.5	13.2	76.1	13.9	83.9	14.4	92.1	15.0	99.9	15.7	109.2	16.3	117.8	17.0	126.6	17.7	137.4	18.4	147.0	19.2
		105	63.4	14.1	69.9	14.8	76.8	15.4	83.2	16.1	90.8	16.8	99.0	17.4	106.3	18.2	115.3	18.8	-	-	-	-

\* MIN CONTROL BREAKER IS 15 A  
CUSTOMER MUST SUPPLY 2 LINE VOLTAGES (CONTROL LINE IS 208 V/3/60)

UNIT MODEL	COMPRESSOR MODEL	208V/1/60				208V/3/60				380V/3/50				460V/3/60*				575V/3/60*			
		COMP	FAN	MCA	MIN BRKR	COMP	FAN	MCA	MIN BRKR	COMP	FAN	MCA	MIN BRKR	COMP	FAN	MCA	MIN BRKR	COMP	FAN	MCA	CONT.
		RLA	FLA	A	A	RLA	FLA	A	A	RLA	FLA	A	A	RLA	FLA	A	A	RLA	FLA	A	A
H#Z-0200MS	ZS15K4E	13.6	2.5	22.5	25	9.3	2.5	17.1	20	4.3	2.5	10.9	15	4.3	15	2.5	6.1	-	-	-	-
H#Z-0250MS	ZS19K4E	16.4	2.5	26.0	30	9.7	2.5	17.6	20	5.0	2.5	11.8	15	5.0	15	2.5	6.1	-	-	-	-
H#Z-0300MS	ZS21K4E	16.4	2.5	26.0	30	11.1	2.5	19.4	20	5.7	2.5	12.6	15	5.7	15	2.5	6.1	4.3	15	2.5	6.1
H#Z-0350MS	ZS26K4E	20.7	2.5	31.4	40	13.6	2.5	22.5	25	7.1	2.5	14.4	15	7.1	15	2.5	6.1	5.0	15	2.5	6.1
H#Z-0400MS	ZS30K4E	26.8	5.0	41.5	50	15.0	5.0	26.8	30	8.2	5.0	18.3	20	8.2	15	5.0	8.6	6.8	15	5.0	8.6
H#Z-0500MS	ZS38K4E	31.8	5.0	47.8	50	21.4	5.0	34.8	40	9.6	5.0	20.0	25	9.6	15	5.0	8.6	7.9	15	5.0	8.6
H#Z-0600MS	ZS45K4E	-	-	-	-	23.9	5.0	37.9	40	9.3	5.0	19.6	20	9.3	15	5.0	8.6	7.9	15	5.0	8.6
H#Z-0750MS	ZS56K4E	-	-	-	-	30.9	5.0	46.6	50	16.2	5.0	28.3	30	16.2	25	5.0	8.6	11.8	15	5.0	8.6
H#Z-1000MS	ZS75K4E	-	-	-	-	44.9	10.0	69.1	70	21.7	10.0	40.1	50	21.7	30	10.0	13.6	16.6	25	10.0	13.6
H#Z-1300MS	ZS92K4E	-	-	-	-	54.4	10.0	81.0	90	25.8	10.0	45.3	50	25.8	40	10.0	13.6	20.6	30	10.0	13.6
H#Z-1500MS	ZS11M4E	-	-	-	-	60.0	10.0	88.0	90	28.2	10.0	48.3	50	28.2	40	10.0	13.6	22.5	30	10.0	13.6

UNIT MODEL	COMPRESSOR MODEL	REF. LINE CONNECTIONS		RCVR STD DIAxHGT	RCVR CAP R-404A LBS.	EST. SHIP WGT. [LBS]	CABINET SIZE
		LIQ OD	SUCT OD				
H#Z-0200MS	ZS15K4E	1/2	1-1/8	6x18	16.7	263	SMALL
H#Z-0250MS	ZS19K4E	1/2	1-1/8	6x23	21.4	381	MEDIUM
H#Z-0300MS	ZS21K4E	1/2	1-1/8	6x23	21.4	381	MEDIUM
H#Z-0350MS	ZS26K4E	1/2	1-1/8	6x23	21.4	384	MEDIUM
H#Z-0400MS	ZS30K4E	5/8	1-1/8	6x30	27.9	450	MEDIUM
H#Z-0500MS	ZS38K4E	5/8	1-1/8	6x30	27.9	460	MEDIUM
H#Z-0600MS	ZS45K4E	5/8	1-3/8	8-5/8x30	53.9	515	MEDIUM
H#Z-0750MS	ZS56K4E	5/8	1-3/8	8-5/8x30	53.9	645	MEDIUM
H#Z-1000MS	ZS75K4E	5/8	1-3/8	10-3/4x30	82.3	889	LARGE
H#Z-1300MS	ZS92K4E	7/8	1-5/8	12x30	100.1	1,087	LARGE
H#Z-1500MS	ZS11M4E	7/8	1-5/8	12x30	100.1	1,192	LARGE

**PERFORMANCE DATA -Air Cooled  
Copeland Scroll/ Low Temperature-R22**

H#Z-0200LV	ZF06K4E	AMB	-40°F	SST	-35°F	SST	-30°F	SST	-25°F	SST	-20°F	SST	-15°F	SST	-10°F	SST	-5°F	SST	0°F	SST
		*F	MBH	KW	MBH	KW	MBH	KW	MBH	KW	MBH	KW	MBH	KW	MBH	KW	MBH	KW	MBH	KW
		90	4.3	1.5	4.9	1.5	5.5	1.5	6.2	1.6	7.0	1.6	7.9	1.6	8.9	1.7	9.9	1.7	11.0	1.8
		95	4.2	1.6	4.8	1.6	5.4	1.6	6.1	1.7	6.9	1.7	7.8	1.7	8.7	1.7	9.7	1.8	10.8	1.8
		105	4.1	1.7	4.6	1.8	5.2	1.8	5.9	1.8	6.6	1.9	7.4	1.9	8.3	1.9	9.3	1.9	10.3	2.0
H#Z-0250LV	ZF08K4E	90	5.4	1.9	6.1	1.9	7.0	2.0	7.9	2.0	8.9	2.0	10.0	2.1	11.2	2.1	12.4	2.2	13.8	2.2
		95	5.3	2.0	6.0	2.0	6.8	2.1	7.7	2.1	8.7	2.1	9.8	2.2	10.9	2.2	12.1	2.3	13.5	2.3
		105	5.1	2.2	5.8	2.3	6.5	2.3	7.4	2.3	8.3	2.4	9.3	2.4	10.3	2.5	11.5	2.5	12.8	2.6
H#Z-0300LV	ZF09K4E	90	6.1	1.9	6.9	1.9	7.9	2.0	8.9	2.1	9.9	2.1	11.1	2.2	12.3	2.3	13.7	2.3	15.1	2.4
		95	5.9	2.0	6.8	2.0	7.7	2.1	8.7	2.1	9.7	2.2	10.8	2.3	12.0	2.4	13.3	2.4	14.7	2.5
		105	5.6	2.2	6.4	2.3	7.3	2.3	8.2	2.4	9.2	2.4	10.2	2.5	11.4	2.6	12.6	2.6	13.9	2.7
H#Z-0350LV	ZF11K4E	90	7.5	2.1	8.5	2.2	9.6	2.3	10.8	2.4	12.1	2.4	13.4	2.6	14.9	2.6	16.5	2.8	18.2	2.9
		95	7.3	2.2	8.3	2.3	9.3	2.4	10.5	2.5	11.7	2.6	13.0	2.7	14.5	2.8	16.0	2.9	17.6	3.0
		105	6.9	2.5	7.8	2.6	8.8	2.6	9.9	2.7	11.1	2.8	12.3	2.9	13.7	3.0	15.1	3.2	16.5	3.3
H#Z-0400LV	ZF13K4E	90	8.6	2.6	9.7	2.7	11.0	2.8	12.3	2.9	13.8	3.0	15.3	3.1	17.0	3.2	18.8	3.4	20.7	3.5
		95	8.3	2.7	9.5	2.8	10.7	2.9	12.0	3.0	13.4	3.1	14.9	3.2	16.5	3.4	18.3	3.5	20.1	3.6
		105	7.9	2.9	8.9	3.0	10.1	3.1	11.3	3.2	12.6	3.3	14.0	3.5	15.5	3.6	17.2	3.7	19.0	3.9
H#Z-0500LV	ZF15K4E	90	10.7	3.2	12.2	3.2	13.8	3.3	15.5	3.4	17.4	3.5	19.5	3.6	21.6	3.8	24.0	3.9	26.5	4.1
		95	10.5	3.3	11.9	3.4	13.4	3.5	15.1	3.6	17.0	3.7	19.0	3.8	21.0	3.9	23.4	4.1	25.7	4.2
		105	9.9	3.6	11.3	3.7	12.7	3.8	14.3	3.9	16.0	4.0	17.9	4.1	19.8	4.3	22.0	4.4	24.2	4.6
H#Z-0600LV	ZF18K4E	90	12.4	3.9	14.1	4.0	16.0	4.1	18.0	4.2	20.2	4.3	22.5	4.5	25.1	4.7	27.8	4.9	30.7	5.1
		95	12.1	4.1	13.8	4.2	15.5	4.3	17.5	4.4	19.7	4.5	21.9	4.7	24.5	4.9	27.1	5.1	29.9	5.3
		105	11.4	4.5	13.0	4.6	14.7	4.7	16.5	4.8	18.6	4.9	20.7	5.1	23.0	5.3	25.5	5.5	28.0	5.7
H#Z-0750LV	ZF24K4E	90	15.0	5.0	17.1	5.2	19.3	5.4	21.7	5.5	24.4	5.7	27.3	5.9	30.3	6.1	33.7	6.3	37.2	6.6
		95	14.7	5.1	16.6	5.3	18.8	5.5	21.2	5.7	23.8	5.9	26.6	6.1	29.5	6.4	32.8	6.6	36.2	6.8
		105	13.9	5.4	15.8	5.6	17.9	5.9	20.1	6.1	22.5	6.4	25.2	6.6	27.9	6.9	31.0	7.1	34.1	7.4
H#Z-1000LV	ZF33K4E	90	21.8	6.2	24.5	6.4	27.4	6.8	30.8	7.1	34.5	7.3	38.4	7.7	42.9	8.0	47.4	8.4	52.4	8.8
		95	21.7	6.4	24.2	6.7	26.9	7.0	30.1	7.3	33.7	7.6	37.4	8.0	41.7	8.3	46.1	8.7	50.9	9.1
		105	21.4	6.9	23.4	7.2	25.8	7.6	28.6	7.9	31.8	8.3	35.2	8.7	39.1	9.0	43.1	9.4	47.5	9.9

\* MIN CONTROL BREAKER IS 15 A  
CUSTOMER MUST SUPPLY 2 LINE VOLTAGES (CONTROL LINE IS 208 V/3/60)

UNIT MODEL	COMPRESSOR MODEL	208V/1/60				208V/3/60				380V/3/50				460V/3/60*				575V/3/60*			
		COMP	FAN	MCA	MIN BRKR	COMP	FAN	MCA	MIN BRKR	COMP	FAN	MCA	MIN BRKR	COMP	COMP	FAN	CONT.	COMP	COMP	FAN	CONT.
		RLA	FLA	A	A	RLA	FLA	A	A	RLA	FLA	A	A	RLA	BRKR	FLA	MCA	RLA	BRKR	FLA	MCA
H#Z-0200LV	ZF06K4E	13.6	2.5	22.5	25	9.3	2.5	17.1	20	4.3	2.5	10.9	15	4.3	15	2.5	6.1	-	-	-	-
H#Z-0250LV	ZF08K4E	16.4	2.5	26.0	30	9.7	2.5	17.6	20	5.0	2.5	11.8	15	5.0	15	2.5	6.1	-	-	-	-
H#Z-0300LV	ZF09K4E	16.4	2.5	26.0	30	11.1	2.5	19.4	20	5.7	2.5	12.6	15	5.7	15	2.5	6.1	4.3	15	2.5	6.1
H#Z-0350LV	ZF11K4E	20.7	2.5	31.4	40	13.6	2.5	22.5	25	7.1	2.5	14.4	15	7.1	15	2.5	6.1	5.0	15	2.5	6.1
H#Z-0400LV	ZF13K4E	26.8	2.5	39.0	40	15.0	2.5	24.3	25	8.2	2.5	15.8	20	8.2	15	2.5	6.1	6.8	15	2.5	6.1
H#Z-0500LV	ZF15K4E	31.8	5.0	47.8	50	21.4	5.0	34.8	40	9.6	5.0	20.0	25	9.6	15	5.0	8.6	7.9	15	5.0	8.6
H#Z-0600LV	ZF18K4E	-	-	-	-	23.9	5.0	37.9	40	9.3	5.0	19.6	20	9.3	15	5.0	8.6	7.9	15	5.0	8.6
H#Z-0750LV	ZF24K4E	-	-	-	-	30.9	5.0	46.6	50	16.2	5.0	28.3	30	16.2	25	5.0	8.6	11.8	15	5.0	8.6
H#Z-1000LV	ZF33K4E	-	-	-	-	44.9	5.0	64.1	70	21.7	5.0	35.1	40	21.7	30	5.0	8.6	16.6	25	5.0	8.6

UNIT MODEL	COMPRESSOR MODEL	REF. LINE CONNECTIONS		RCVR STD DIAxHGT	RCVR CAP R-22 LBS.	EST. SHIP WGT. [LBS]	CABINET SIZE
		LIQ OD	SUCT OD				
H#Z-0200LV	ZF06K4E	3/8	7/8	6x12	12.8	247	SMALL
H#Z-0250LV	ZF08K4E	3/8	7/8	6x12	12.8	256	SMALL
H#Z-0300LV	ZF09K4E	1/2	1-1/8	6x18	19.2	357	SMALL
H#Z-0350LV	ZF11K4E	1/2	1-1/8	6x18	19.2	360	SMALL
H#Z-0400LV	ZF13K4E	1/2	1-1/8	6x18	19.2	377	SMALL
H#Z-0500LV	ZF15K4E	1/2	1-1/8	6x23	24.6	455	MEDIUM
H#Z-0600LV	ZF18K4E	5/8	1-3/8	6x23	24.6	466	MEDIUM
H#Z-0750LV	ZF24K4E	5/8	1-3/8	6x30	32.0	600	MEDIUM
H#Z-1000LV	ZF33K4E	5/8	1-3/8	8-5/8x30	62.0	645	MEDIUM

**PERFORMANCE DATA -Air Cooled  
Copeland Scroll/ Low Temperature-R404A**

	AMB °F	-40°F MBH	SST KW	-35°F MBH	SST KW	-30°F MBH	SST KW	-25°F MBH	SST KW	-20°F MBH	SST KW	-15°F MBH	SST KW	-10°F MBH	SST KW	-5°F MBH	SST KW	0°F MBH	SST KW
H#Z-0200LS ZF06K4E	90	4.7	1.5	5.3	1.5	6.0	1.5	6.8	1.5	7.6	1.6	8.5	1.6	9.4	1.7	10.3	1.8	11.4	1.8
	95	4.5	1.6	5.1	1.6	5.8	1.6	6.6	1.6	7.3	1.7	8.1	1.7	9.0	1.8	9.9	1.8	10.9	1.9
	105	4.1	1.8	4.7	1.8	5.3	1.8	6.0	1.8	6.7	1.8	7.5	1.9	8.2	1.9	9.1	2.0	10.0	2.1
H#Z-0250LS ZF08K4E	90	5.9	1.8	6.7	1.9	7.5	1.9	8.4	2.0	9.4	2.0	10.5	2.1	11.6	2.2	12.8	2.3	14.1	2.3
	95	5.7	1.9	6.4	2.0	7.2	2.0	8.1	2.1	9.0	2.1	10.0	2.2	11.1	2.3	12.3	2.4	13.5	2.4
	105	5.1	2.2	5.9	2.2	6.6	2.3	7.4	2.3	8.2	2.4	9.1	2.4	10.1	2.5	11.1	2.6	12.2	2.7
H#Z-0300LS ZF09K4E	90	6.6	1.9	7.5	1.9	8.4	2.0	9.4	2.1	10.5	2.1	11.7	2.2	12.9	2.3	14.2	2.4	15.6	2.5
	95	6.3	2.0	7.2	2.0	8.1	2.1	9.0	2.2	10.1	2.2	11.2	2.3	12.4	2.4	13.7	2.5	14.9	2.6
	105	5.8	2.2	6.6	2.3	7.4	2.3	8.2	2.4	9.2	2.5	10.2	2.5	11.2	2.6	12.4	2.7	13.6	2.8
H#Z-0350LS ZF11K4E	90	8.0	2.3	9.0	2.5	10.1	2.5	11.3	2.6	12.6	2.7	13.9	2.8	15.4	2.9	16.9	3.1	18.6	3.2
	95	7.7	2.5	8.6	2.6	9.7	2.7	10.8	2.8	12.1	2.9	13.4	3.0	14.7	3.1	16.2	3.2	17.7	3.3
	105	7.0	2.7	7.8	2.8	8.8	2.9	9.8	3.0	10.9	3.1	12.1	3.2	13.2	3.4	14.6	3.5	16.0	3.6
H#Z-0400LS ZF13K4E	90	8.6	2.8	9.9	2.9	11.1	3.0	12.6	3.1	14.0	3.3	15.7	3.4	17.3	3.5	18.9	3.7	20.7	3.8
	95	8.2	2.9	9.4	3.0	10.6	3.2	11.9	3.3	13.3	3.4	14.8	3.5	16.3	3.7	17.8	3.8	19.7	4.0
	105	7.7	3.3	8.6	3.4	9.6	3.5	10.8	3.6	11.9	3.8	13.1	3.9	14.5	4.0	15.8	4.2	17.4	4.3
H#Z-0500LS ZF15K4E	90	11.5	3.2	13.0	3.3	14.7	3.4	16.4	3.6	18.3	3.7	20.4	3.8	22.7	3.9	24.8	4.1	27.4	4.3
	95	11.0	3.3	12.5	3.4	14.1	3.6	15.8	3.7	17.5	3.8	19.5	4.0	21.6	4.1	23.9	4.3	26.1	4.5
	105	10.0	3.6	11.4	3.7	12.8	3.9	14.4	4.0	16.0	4.2	17.8	4.3	19.5	4.5	21.5	4.7	23.6	4.8
H#Z-0600LS ZF18K4E	90	13.4	3.9	15.2	4.1	17.1	4.2	19.3	4.4	21.4	4.6	23.8	4.8	26.2	5.0	28.9	5.2	31.6	5.4
	95	12.9	4.1	14.6	4.3	16.5	4.4	18.5	4.6	20.5	4.8	22.8	5.0	25.0	5.2	27.6	5.4	30.1	5.6
	105	12.0	4.4	13.5	4.6	15.2	4.8	17.0	5.0	18.9	5.2	20.7	5.4	22.8	5.6	24.8	5.9	27.1	6.1
H#Z-0750LS ZF24K4E	90	16.2	4.9	18.4	5.1	20.8	5.3	23.4	5.5	26.2	5.7	28.9	6.0	32.1	6.3	35.2	6.5	38.8	6.8
	95	15.5	5.0	17.7	5.3	20.0	5.5	22.5	5.7	25.1	5.9	27.7	6.2	30.7	6.5	33.9	6.7	37.0	7.0
	105	14.3	5.3	16.3	5.6	18.4	5.8	20.6	6.1	23.0	6.4	25.5	6.6	28.2	6.9	30.7	7.2	33.7	7.5
H#Z-1000LS ZF33K4E	90	22.7	6.9	26.0	7.2	29.2	7.6	33.0	7.9	36.9	8.2	40.8	8.6	45.3	8.9	49.6	9.4	54.2	9.8
	95	21.7	7.2	24.9	7.5	28.1	7.9	31.6	8.2	35.4	8.5	39.1	8.9	43.3	9.3	47.4	9.7	52.1	10.1
	105	19.8	7.7	22.8	8.1	25.7	8.5	28.9	8.8	32.3	9.2	35.8	9.6	39.2	10.0	43.1	10.4	46.7	10.9

\* MIN CONTROL BREAKER IS 15 A  
CUSTOMER MUST SUPPLY 2 LINE VOLTAGES (CONTROL LINE IS 208 V/3/60)

UNIT MODEL	COMPRESSOR MODEL	208V/1/60				208V/3/60				380V/3/50				460V/3/60*				575V/3/60*			
		COMP RLA	FAN FLA	MCA A	MIN BRKR A	COMP RLA	FAN FLA	MCA A	MIN BRKR A	COMP RLA	FAN FLA	MCA A	MIN BRKR A	COMP RLA	COMP BRKR A	FAN FLA	CONT. MCA A	COMP RLA	COMP BRKR A	FAN FLA	CONT. MCA A
		H#Z-0200LS	ZF06K4E	13.6	2.5	22.5	25	9.3	2.5	17.1	20	4.3	2.5	10.9	15	4.3	15	2.5	6.1	-	-
H#Z-0250LS	ZF08K4E	16.4	2.5	26.0	30	9.7	2.5	17.6	20	5.0	2.5	11.8	15	5.0	15	2.5	6.1	-	-	-	-
H#Z-0300LS	ZF09K4E	16.4	2.5	26.0	30	11.1	2.5	19.4	20	5.7	2.5	12.6	15	5.7	15	2.5	6.1	4.3	15	2.5	6.1
H#Z-0350LS	ZF11K4E	20.7	2.5	31.4	40	13.6	2.5	22.5	25	7.1	2.5	14.4	15	7.1	15	2.5	6.1	5.0	15	2.5	6.1
H#Z-0400LS	ZF13K4E	26.8	2.5	39.0	40	15.0	2.5	24.3	25	8.2	2.5	15.8	20	8.2	15	2.5	6.1	6.8	15	2.5	6.1
H#Z-0500LS	ZF15K4E	31.8	5.0	47.8	50	21.4	5.0	34.8	40	9.6	5.0	20.0	25	9.6	15	5.0	8.6	7.9	15	5.0	8.6
H#Z-0600LS	ZF18K4E	-	-	-	-	23.9	5.0	37.9	40	9.3	5.0	19.6	20	9.3	15	5.0	8.6	7.9	15	5.0	8.6
H#Z-0750LS	ZF24K4E	-	-	-	-	30.9	5.0	46.6	50	16.2	5.0	28.3	30	16.2	25	5.0	8.6	11.8	15	5.0	8.6
H#Z-1000LS	ZF33K4E	-	-	-	-	44.9	5.0	64.1	70	21.7	5.0	35.1	40	21.7	30	5.0	8.6	16.6	25	5.0	8.6

UNIT MODEL	COMPRESSOR MODEL	REF. LINE CONNECTIONS		RCVR STD DIAxHGT	RCVR CAP R-404A LBS.	EST. SHIP WGT. [LBS]	CABINET SIZE
		LIQ OD	SUCT OD				
H#Z-0200LS	ZF06K4E	3/8	7/8	6x12	11.1	247	SMALL
H#Z-0250LS	ZF08K4E	3/8	7/8	6x12	11.1	256	SMALL
H#Z-0300LS	ZF09K4E	1/2	1-1/8	6x18	16.7	357	SMALL
H#Z-0350LS	ZF11K4E	1/2	1-1/8	6x18	16.7	360	SMALL
H#Z-0400LS	ZF13K4E	1/2	1-1/8	6x18	16.7	377	SMALL
H#Z-0500LS	ZF15K4E	1/2	1-1/8	6x23	21.4	455	MEDIUM
H#Z-0600LS	ZF18K4E	5/8	1-3/8	6x23	21.4	466	MEDIUM
H#Z-0750LS	ZF24K4E	5/8	1-3/8	6x30	27.9	600	MEDIUM
H#Z-1000LS	ZF33K4E	5/8	1-3/8	8-5/8x30	53.9	645	MEDIUM

## RECEIVER STANDARD AND OPTIONS

Selection:

- 1 - Select the base option (Standard Base or Heavy Duty Base) for the condensing unit.
- 2 - Determine the cabinet size for condensing unit, which can be found in the performance data sheet and it is based on the compressor model.
- 3 - Determine the standard receiver, which can be found in the performance data sheet and it is based on the compressor model.
- 4 - Choose one of the receiver options available for oversize receiver.

<b>STANDARD BASE</b>			
<b>CABINET SIZE</b>	<b>RECEIVER DIA.* x HEIGHT*</b>		
	<b>STD</b>	<b>OPT 1</b>	<b>OPT 2</b>
<b>SMALL</b>	6 x 12	6 x 18	-
<b>SMALL</b>	6 x 18	-	-
<b>MEDIUM</b>	6 x 23	6 x 30	8 5/8 x 30
<b>MEDIUM</b>	6 x 30	8 5/8 x 30	-
<b>MEDIUM</b>	8 5/8 x 30	-	-
<b>LARGE</b>	8 5/8 x 30	10 3/4 x 30	12 3/4 x 30
<b>LARGE</b>	10 3/4 x 30	12 3/4 x 30	-
<b>LARGE</b>	12 3/4 x 30	-	-

<b>HEAVY DUTY BASE</b>					
<b>CABINET SIZE</b>	<b>RECEIVER DIA.* x HEIGHT*</b>				
	<b>STD</b>	<b>OPT 1</b>	<b>OPT 2</b>	<b>OPT 3</b>	<b>OPT 4</b>
<b>SMALL</b>	6 x 12	6 x 18	6 x 23	6 x 30	8 5/8 x 30
<b>SMALL</b>	6 x 18	6 x 23	6 x 30	8 5/8 x 30	-
<b>MEDIUM</b>	6 x 23	6 x 30	8 5/8 x 30	10 3/4 x 30	10 3/4 x 38
<b>MEDIUM</b>	6 x 30	8 5/8 x 30	10 3/4 x 30	10 3/4 x 38	-
<b>MEDIUM</b>	8 5/8 x 30	10 3/4 x 30	10 3/4 x 38	-	-
<b>LARGE</b>	8 5/8 x 30	10 3/4 x 30	10 3/4 x 38	-	-
<b>LARGE</b>	10 3/4 x 30	10 3/4 x 38	-	-	-
<b>LARGE</b>	10 3/4 x 38	-	-	-	-

## RECEIVER SIZE AND CAPACITY

<b>RECEIVER SIZE*</b>		<b>CAPACITY - 90% FULL</b>	
		<b>R22 [LBS]</b>	<b>R-404A / R507 [LBS]</b>
<b>A</b>	<b>6 x 12</b>	12.8	11.1
<b>B</b>	<b>6 x 18</b>	19.2	16.7
<b>C</b>	<b>6 x 23</b>	24.6	21.4
<b>D</b>	<b>6 x 30</b>	32.0	27.9
<b>E</b>	<b>8 5/8 x 30</b>	62.0	53.9
<b>F</b>	<b>10 3/4 x 30</b>	94.6	82.3
<b>G</b>	<b>10 3/4 x 38</b>	122.0	106.2
<b>H</b>	<b>12 3/4 x 30</b>	115.0	100.1

\* DIMENSIONS ARE IN INCHES.



## DEFROST KITS

COND UNIT VOLTAGE	ELECTRIC DEFROST KIT **		EVAPORATOR HEATERS				EVAPORATOR MOTORS			
			GROUP A		GROUP B		DEFROST VOLTAGE	NUMBER OF CONTACTORS	MAX. AMPS	EVAP. VOLTAGE
			NUMBER OF CONTACTORS	MAX. AMPS	NUMBER OF CONTACTORS	MAX. AMPS				
	W/ FUSES	W/ BREAKER								
208/1/60	EDF-D-1A	EDB-D-1A	1	16	0	0	208/1/60	1	12	208/1/60
208/1/60	EDF-D-1B	EDB-D-1B	1	20	0	0	208/1/60	1	12	208/1/60
208/1/60	EDF-D-1C	EDB-D-1C	1	40	0	0	208/1/60	1	12	208/1/60
208/1/60	EDF-D-2A	EDB-D-2A	1	48	0	0	208/1/60	1	12	208/1/60
208/3/60	EDF-K-1D	EDB-K-1D	1	12	0	0	208/1/60	1	12	208/1/60
208/3/60	EDF-K-1E	EDB-K-1E	1	16	0	0	208/1/60	1	12	208/1/60
208/3/60	EDF-K-1F	EDB-K-1F	1	20	0	0	208/1/60	1	12	208/1/60
208/3/60	EDF-K-1G	EDB-K-1G	1	28	0	0	208/1/60	1	12	208/1/60
208/3/60	EDF-K-1H	EDB-K-1H	1	32	0	0	208/1/60	1	12	208/1/60
208/3/60	EDF-K-2B	EDB-K-2B	1	24	0	0	208/3/60	1	12	208/1/60
208/3/60	EDF-K-2C	EDB-K-2C	1	40	0	0	208/3/60	1	12	208/1/60
208/3/60	EDF-K-2D	EDB-K-2D	1	48	0	0	208/3/60	1	12	208/1/60
208/3/60	EDF-K-3A	EDB-K-3A	1	48	0	0	208/3/60	1	12	208/3/60
208/3/60	EDF-K-4A	EDB-K-4A	2	48	0	0	208/3/60	1	12	208/3/60
208/3/60	EDF-K-4B	EDB-K-4B	4	48	0	0	208/3/60	2	12	208/3/60
208/3/60	EDF-K-4C	EDB-K-4C	1	48	1	24	208/3/60	1	12	208/3/60
208/3/60	EDF-K-4D	EDB-K-4D	2	48	2	24	208/3/60	2	12	208/3/60
208/3/60	EDF-K-4E	EDB-K-4E	1	48	1	40	208/3/60	1	12	208/3/60
208/3/60	EDF-K-4F	EDB-K-4F	2	48	2	40	208/3/60	2	12	208/3/60
460/3/60	EDF-M-2B*	EDB-M-2B*	1	24	0	0	208/3/60	1	12	208/1/60
460/3/60	EDF-M-2C*	EDB-M-2C*	1	40	0	0	208/3/60	1	12	208/1/60
460/3/60	EDF-M-2D*	EDB-M-2D*	1	48	0	0	208/3/60	1	12	208/1/60
460/3/60	EDF-M-3A*	EDB-M-3A*	1	48	0	0	208/3/60	1	12	208/3/60
460/3/60	EDF-M-4A*	EDB-M-4A*	2	48	0	0	208/3/60	1	12	208/3/60
460/3/60	EDF-M-4B*	EDB-M-4B*	4	48	0	0	208/3/60	2	12	208/3/60
460/3/60	EDF-M-4C*	EDB-M-4C*	1	48	1	24	208/3/60	1	12	208/3/60
460/3/60	EDF-M-4D*	EDB-M-4D*	2	48	2	24	208/3/60	2	12	208/3/60
460/3/60	EDF-M-4E*	EDB-M-4E*	1	48	1	40	208/3/60	1	12	208/3/60
460/3/60	EDF-M-4F*	EDB-M-4F*	2	48	2	40	208/3/60	2	12	208/3/60
460/3/60	EDF-M-3B	EDB-M-3B	1	12	0	0	460/1/60	1	12	460/1/60
460/3/60	EDF-M-3C	EDB-M-3C	1	16	0	0	460/1/60	1	12	460/1/60
460/3/60	EDF-M-3L	EDB-M-3L	1	20	0	0	460/1/60	1	12	460/1/60
460/3/60	EDF-M-3D	EDB-M-3D	1	24	0	0	460/1/60	1	12	460/1/60
460/3/60	EDF-M-3M	EDB-M-3M	1	28	0	0	460/1/60	1	12	460/1/60
460/3/60	EDF-M-3N	EDB-M-3N	1	32	0	0	460/1/60	1	12	460/1/60
460/3/60	EDF-M-3E	EDB-M-3E	1	36	0	0	460/1/60	1	12	460/1/60
460/3/60	EDF-M-3O	EDB-M-3O	1	40	0	0	460/1/60	1	12	460/1/60
460/3/60	EDF-M-3F	EDB-M-3F	1	48	0	0	460/1/60	1	12	460/1/60
460/3/60	EDF-M-3G	EDB-M-3G	1	12	0	0	460/3/60	1	12	460/3/60
460/3/60	EDF-M-3H	EDB-M-3H	1	16	0	0	460/3/60	1	12	460/3/60
460/3/60	EDF-M-3P	EDB-M-3P	1	20	0	0	460/3/60	1	12	460/3/60
460/3/60	EDF-M-3I	EDB-M-3I	1	24	0	0	460/3/60	1	12	460/3/60
460/3/60	EDF-M-3Q	EDB-M-3Q	1	28	0	0	460/3/60	1	12	460/3/60
460/3/60	EDF-M-4O	EDB-M-4O	2	28	0	0	460/3/60	1	12	460/3/60
460/3/60	EDF-M-3R	EDB-M-3R	1	32	0	0	460/3/60	1	12	460/3/60
460/3/60	EDF-M-4P	EDB-M-4P	2	32	0	0	460/3/60	1	12	460/3/60
460/3/60	EDF-M-4Q	EDB-M-4Q	3	32	0	0	460/3/60	2	12	460/3/60
460/3/60	EDF-M-3S	EDB-M-3S	1	36	0	0	460/3/60	1	12	460/3/60
460/3/60	EDF-M-4R	EDB-M-4R	2	36	0	0	460/3/60	1	12	460/3/60
460/3/60	EDF-M-4S	EDB-M-4S	3	36	0	0	460/3/60	2	12	460/3/60
460/3/60	EDF-M-4T	EDB-M-4T	4	36	0	0	460/3/60	2	12	460/3/60
460/3/60	EDF-M-3J	EDB-M-3J	1	40	0	0	460/3/60	1	12	460/3/60
460/3/60	EDF-M-4H	EDB-M-4H	2	40	0	0	460/3/60	1	12	460/3/60
460/3/60	EDF-M-4I	EDB-M-4I	3	40	0	0	460/3/60	2	12	460/3/60
460/3/60	EDF-M-4J	EDB-M-4J	4	40	0	0	460/3/60	2	12	460/3/60
460/3/60	EDF-M-3K	EDB-M-3K	1	48	0	0	460/3/60	1	12	460/3/60
460/3/60	EDF-M-4G	EDB-M-4G	2	48	0	0	460/3/60	1	12	460/3/60
460/3/60	EDF-M-4K	EDB-M-4K	3	48	0	0	460/3/60	2	12	460/3/60
460/3/60	EDF-M-4L	EDB-M-4L	4	48	0	0	460/3/60	2	12	460/3/60
460/3/60	EDF-M-4M	EDB-M-4M	1	48	1	40	460/3/60	1	12	460/3/60
460/3/60	EDF-M-4N	EDB-M-4N	2	48	2	40	460/3/60	2	12	460/3/60
COND UNIT VOLTAGE	AIR DEFROST KIT **		DESCRIPTION				EVAPORATOR MOTORS			
	W/ FUSES	W/ BREAKER					NUMBER OF CONTACTORS	MAX. AMPS	EVAP. VOLTAGE	
ALL	AD-0	-	ONLY AIR DEFROST TIMER				-	-	-	
208/1/60	ADF-D-A	ADB-D-A	AIR DEFROST TIMER W/ FAN CONTACTOR				1	12	208/1/60	
208/3/60	ADF-K-A	ADB-K-A	AIR DEFROST TIMER W/ FAN CONTACTOR				1	12	208/1/60	
208/3/60	ADF-K-B	ADB-K-B	AIR DEFROST TIMER W/ FAN CONTACTOR				1	12	208/3/60	
460/3/60	ADF-M-A*	ADB-M-A*	AIR DEFROST TIMER W/ FAN CONTACTOR				1	12	208/1/60	
460/3/60	ADF-M-B*	ADB-M-B*	AIR DEFROST TIMER W/ FAN CONTACTOR				1	12	208/3/60	
460/3/60	ADF-M-C	ADB-M-C	AIR DEFROST TIMER W/ FAN CONTACTOR				1	12	460/1/60	
460/3/60	ADF-M-D	ADB-M-D	AIR DEFROST TIMER W/ FAN CONTACTOR				1	12	460/3/60	

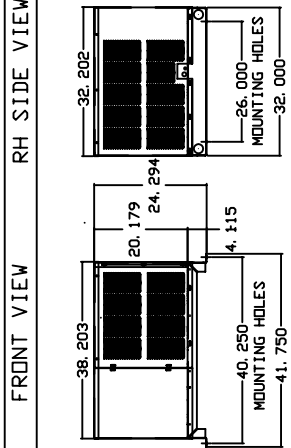
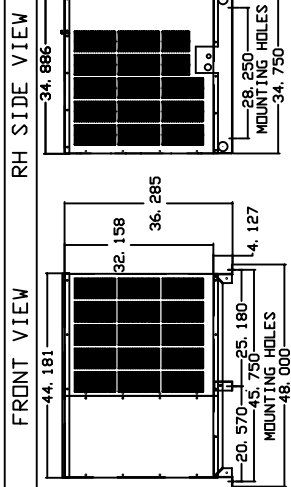
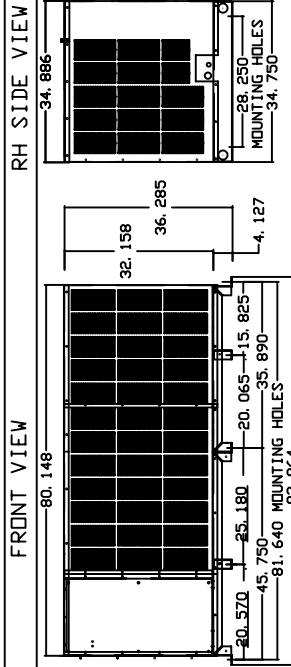
\* THE CUSTOMER MUST SUPPLY 460/3/60 OR 575/3/60 FOR THE COMPRESSOR PLUS AN ADDITIONAL 208/3/60 FOR DEFROST

\*\* FOR 575V/3/60, EDF-M BECAMES EDF-P AND EDB-M BECAMES EDB-P

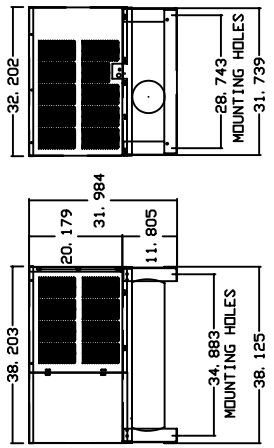
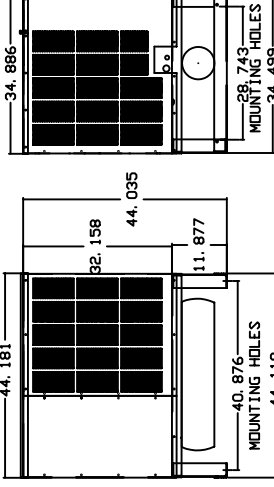
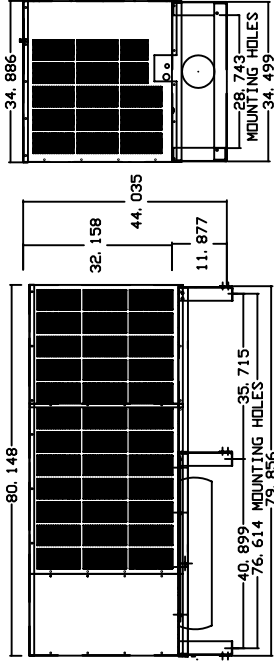
LARGE UNITS

MEDIUM UNITS

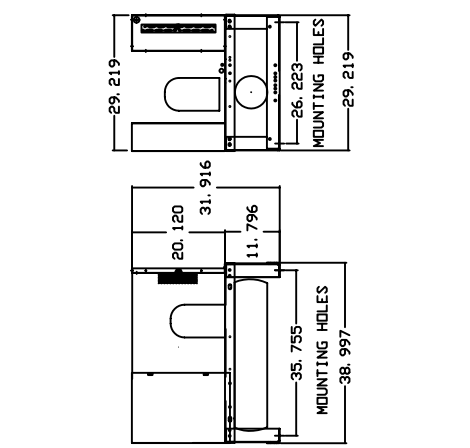
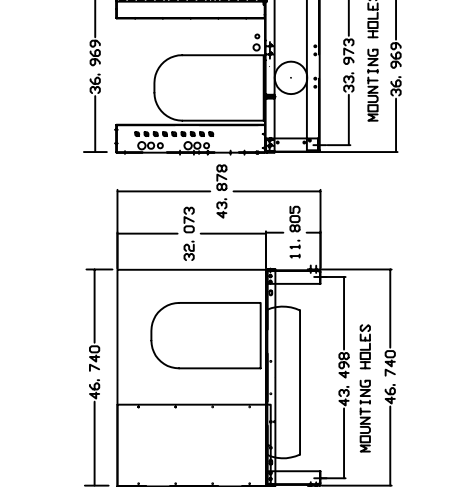
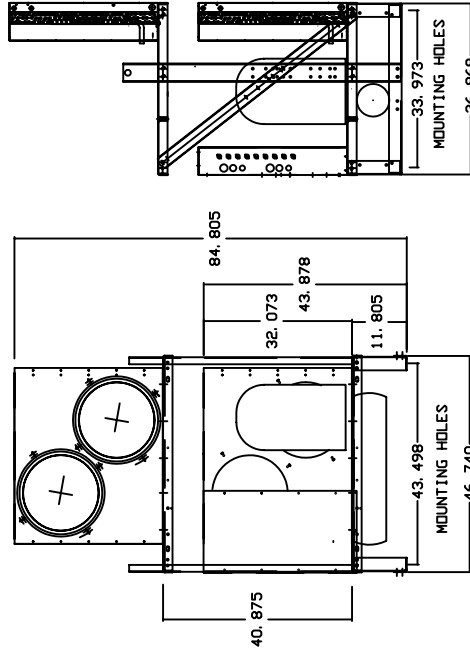
SMALL UNITS



STANDARD  
BASE  
INDOOR &  
OUTDOOR



HEAVY DUTY  
BASE  
OUTDOOR



HEAVY DUTY  
BASE  
INDOOR