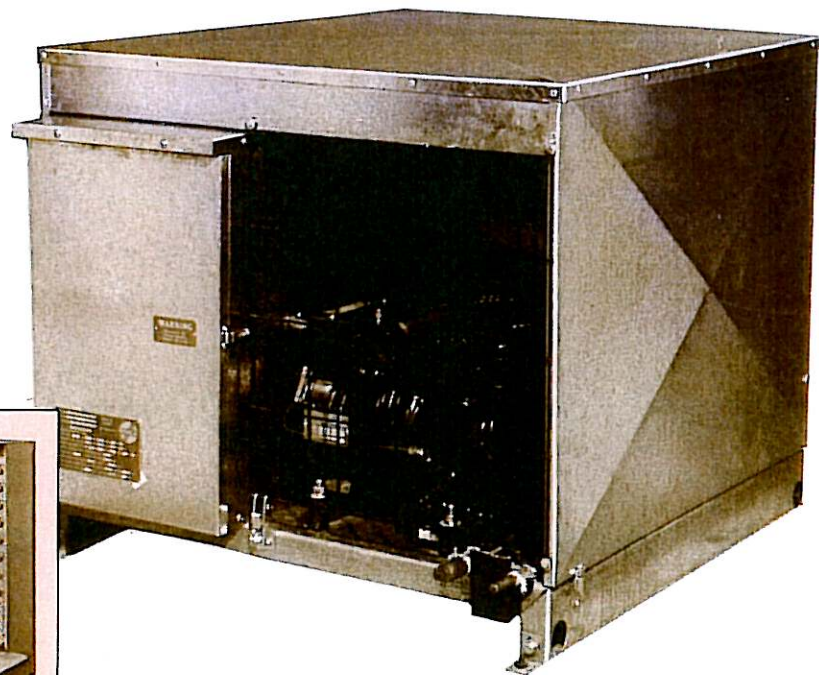
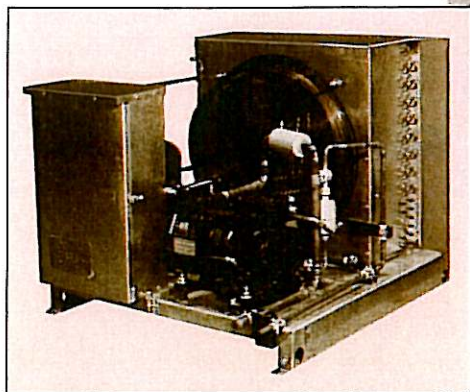


OLA

KRACK

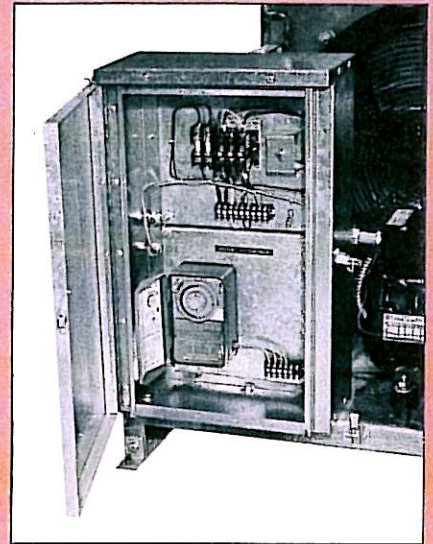
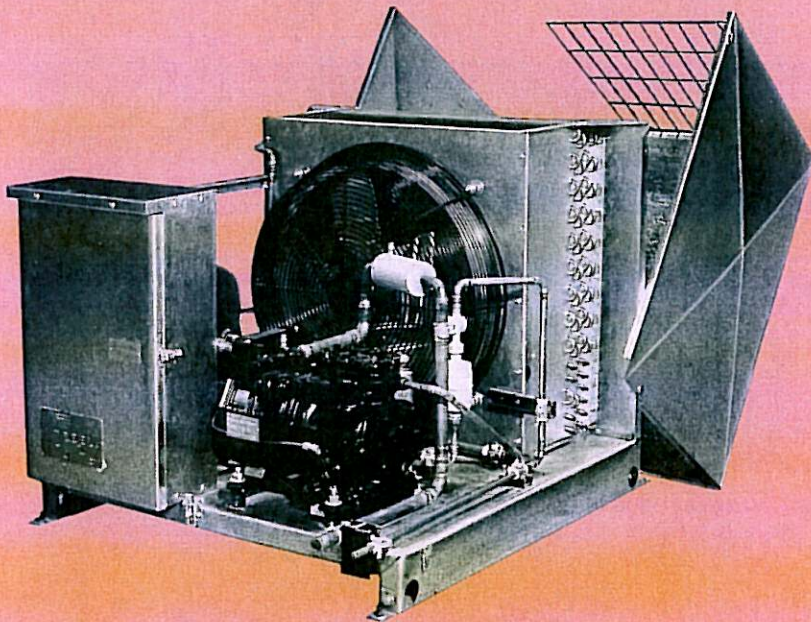
KCU Outdoor Condensing Unit



*KCU Outdoor Air-Cooled Condensing Systems
2 H.P. thru 20 H.P. High, Medium, and Low
Temperature Applications Using
R-12, R-22, R-502 Refrigerants.
Also Available as Indoor Units.*



STANDARD FEATURES



Control panel with defrost option

Krack KCU Series outdoor air cooled condensing units are available in an economical, low profile configuration for high, medium and low temperature applications from 2 to 20 HP in 230/1, 230/3, or 460/3 electrical options. All units feature an easy access hinged weatherproof housing and convenient, externally accessible control enclosure. The KCU Series is also available as an indoor unit without an enclosure. Our new KCU Series delivers traditional Krack quality and value at a competitive price.

Standard KCU features:

- Semi-hermetic compressor
- High/low pressure control
- Oil safety control
- Crankcase heater
- Generously sized vertical receiver
- Convenient hinged galvanized steel outdoor housing
- Liquid line drier and sight glass assembly with isolation valves
- Suction line filter
- Factory wired electric control panel with fused contactors
- Fan cycling control (2 fan model)
- Sub-Cooling Circuit in Condenser
- Control Circuit to be 230/1

Options:

- Accumulator
- Fused disconnect
- Liquid line solenoid valve
- Oil separator
- Capacity modulation
- Electric defrost kit
- Air defrost timer kit
- Insulated receiver
- Low ambient head pressure controls

Applicable Standards

The units are constructed in accordance with ARI, ASME, ANSI-B9, ASHRAE, UL, and the National Electric Code.

Shipment

The units are pressure tested and evacuated to 500 microns. Units are shipped with a dry nitrogen and refrigerant holding charge.

We reserve the right to change or revise specifications and product design in connection with any feature of our products. Such changes do not entitle buyer to corresponding changes, improvements, additions or replacements for equipment previously sold or shipped.

CAPACITY DATA

R12 MEDIUM TEMPERATURE

BTUH AT 95°F/35°C AMBIENT						
KCU MODEL	COMPRESSOR	NOMINAL HP	25°F	20°F	10°F	0°F
			-3.9°C	-6.7°C	-12.2°C	-17.8°C
KCU020-M1	ERJ 0200	2	17000	13800	11000	8500
KCU030-M1	NRD 0310	3	28000	25500	20500	16000
KCU050-M1	2DA0500	5	42900	38400	31300	24250
KCU075-M1	3DB 0750	7.5	64000	57500	47000	36000
KCU100-M1	3DS 1000	10	85000	76500	64000	50000
KCU150-M1	4DH 1500	15	118000	110000	90000	71000

R22 HIGH TEMPERATURE

BTUH AT 95°F/35°C AMBIENT						
KCU MODEL	COMPRESSOR	NOMINAL HP	40°F	30°F	20°F	10°F
			-4.4°C	-1.1°C	-6.7°C	-12.2°C
KCU020-H2	ERA 0200	2	22000	17000	13000	9000
KCU030-H2	ERF 0310	3	33700	26400	22200	17000
KCU050-H2	NRA 0500	5	57000	48000	38000	30000
KCU075-H2	2DA0750	7.5	92800	74700	64200	50300
KCU100-H2	3DB 1000	10	131500	110000	90000	72000
KCU150-H2	3DS 1500	15	181200	152300	130000	105000

R502 MEDIUM TEMPERATURE

BTUH AT 95°F/35°C AMBIENT						
KCU MODEL	COMPRESSOR	NOMINAL HP	25°F	20°F	10°F	0°F
			-3.9°C	-6.7°C	-12.2°C	-17.8°C
KCU020-M5	ERC 0200	2	19500	17500	14000	11500
KCU030-M5	3RA 0310	3	32500	29500	24000	19000
KCU050-M5	NRM 0500	5	50000	47000	37500	31000
KCU075-M5	2DA0750	7.5	70400	63400	53550	42350
KCU100-M5	3DB 1000	10	102000	95000	78000	65000
KCU150-M5	3DS 1500	15	133000	120000	105000	85000

R502 LOW TEMPERATURE

BTUH AT 95°F/35°C AMBIENT							
KCU MODEL	COMPRESSOR	NOMINAL HP	0°F	-10°F	-20°F	-30°F	-40°F
			-17.8°C	-23°C	-28.9°C	-34.4°C	-40°C
KCU020-L5	EAV 0200	2	14000	11500	9200	7200	5000
KCU030-L5	NRD 0310	3	24000	19000	14500	10500	8200
KCU050-L5	2DA0600	5	39750	31200	25200	20400	15000
KCU075-L5	3DB 0750	7.5	54000	43000	36000	28000	21000
KCU100-L5	3DS 1000	10	72000	60000	49000	38000	28000
KCU150-L5	4DL 1500	15	101000	82000	66000	52000	39000
KCU200-L5	4DT 2200	20	120000	100000	85000	65000	52000

*Insert Voltage Code

A = 230/1/60—Available 2, 3, 5 hp only

K = 230/3/60

M = 460/3/60

KCU SPECIFICATIONS

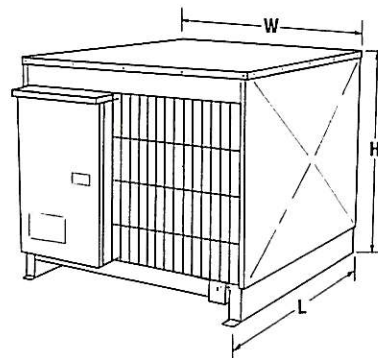
KCU MODEL	CONNECTIONS		ELECTRICAL 230-3			ELECTRICAL 230/208-1			ELECTRICAL 460-3			APPROX SHIP WEIGHT	RECEIVER CAPACITY	
	LIQ	SUCT	COMP	RLA	COND AMPS 230-3	MCA	COMP	RLA	COND AMPS 230-1	MCA	COMP			RLA
020-M1	1/2	7/8	6.3	3.2	11.1		10.1	3.0	15.7	3.4	1.6	7.0	580	28
030-M1	5/8	7/8	14.3	3.2	21.1		21.1	3.0	29.4	7.3	1.6	11.9	620	39
050-M1	5/8	1 1/8	22.3	3.2	31.1		32.3	3.0	43.4	10.4	1.6	15.7	780	39
075-M1	5/8	1 5/8	31.5	3.2	42.6					16.1	1.6	22.9	820	65
100-M1	7/8	2 1/8	42.1	6.4	59.1					18.6	3.2	27.6	1080	92
150-M1	7/8	2 1/8	61.4	6.4	83.1					30.7	3.2	46.7	1200	107
020-H2	1/2	5/8	6.6	3.2	11.5	10.4		3.0	16.0	3.5	1.6	7.2	580	25
030-H2	5/8	5/8	11.7	3.2	17.9	17.0		3.0	24.3	6.4	1.6	10.7	620	35
050-H2	5/8	3/4	19.2	3.2	27.2	34.3		3.0	45.9	9.6	1.6	15.7	780	35
075-H2	5/8	1 1/8	32.0	3.2	43.2					14.1	1.6	20.4	820	59
100-H2	7/8	1 1/8	43.6	6.4	60.9					20.0	3.2	29.3	1080	82
150-H2	7/8	1 5/8	59.6	6.4	80.9					29.0	3.2	40.6	1200	98
020-M5	1/2	7/8	6.8	3.2	11.7	10.9		3.0	16.6	3.6	1.6	7.2	580	26
030-M5	5/8	7/8	13.1	3.2	19.6	18.8		3.0	26.5	6.6	1.6	11.0	620	37
050-M5	5/8	1 1/8	24.3	3.2	33.6	36.5		3.0	48.7	12.1	1.6	17.9	780	37
075-M5	5/8	1 5/8	32.0	3.2	43.2					14.1	1.6	20.4	820	62
100-M5	7/8	2 1/8	43.6	6.4	60.9					20.0	3.2	29.3	1080	85
150-M5	7/8	2 1/8	59.6	6.4	80.9					29.0	3.2	40.6	1200	102
020-L5	1/2	7/8	6.6	3.2	11.1	10.1		3.0	15.7	3.4	1.6	7.0	580	26
030-L5	1/2	7/8	14.3	3.2	21.1	21.1		3.0	29.4	7.3	1.6	11.9	620	37
050-L5	5/8	1 1/8	28.8	3.2	39.2					10.2	1.6	15.5	780	37
075-L5	5/8	1 5/8	31.5	3.2	42.6					16.1	1.6	22.9	820	62
100-L5	5/8	2 1/8	42.1	6.4	59.1					18.6	3.2	27.6	1080	85
150-L5	7/8	2 1/8	60.0	6.4	83.1					30.7	3.2	41.8	1200	102
200-L5	7/8	2 1/8	71.4	6.4	95.7					31.7	3.2	48.0	1240	102

MCA = MINIMUM CIRCUIT AMPACITY
RLA = Rated Load AMPS

DIMENSIONS

KCU HP	L *	W **	H
2, 3	40	35 1/2	30 1/2
5, 7.5	44	44	38
10, 15, 20	44	76	38

* Add 4" to L for control panel and refrigerant connections.
** Add 4" to W for base mounting angle.



Krack Corporation

401 S. Rohlwing Road (Route 53) • Addison, Illinois 60101
Phone: (708) 629-7500 • FAX (708) 629-0168