

RECORD UNDER KP SECTION

CUSTOMER MILWAUKEE REFRIG.

JOB NO. 430417-01

MODEL KPDS36-25-25LC2

REMARKS 460V POWER
115V CONTROL
ED CONTROLS IN KP UNIT

ENGINEERING REQUEST ENTERED
IN ENGINEERING RECORD BOOK

MODEL NO.
SERIAL NO.
PANEL MODEL NO.

KRACK
CORP.
ADDISON, IL



FOR REFRIGERATION USE ONLY

COMPRESSOR-1 LRA RLA VOLTS HZ PH
COMPRESSOR COOLING FAN FLA VOLTS HZ PH
CONDENSER FAN MOTOR (EACH) HP FLA VOLTS HZ PH
MAXIMUM EVAPORATOR TEMPERATURE °F

REFRIGERANT - TOTAL CHARGE LBS.

MINIMUM CIRCUIT AMPACITY VOLTS AMPS

MAXIMUM OVERCURRENT PROTECTIVE DEVICE VOLTS AMPS

REMOTE CONDENSER MINIMUM DESIGN

PRESSURE HIGH SIDE PSIG LOW SIDE PSIG MFG

5484-K

FOR REFRIGERATION USE ONLY

COMPRESSOR-2 LRA RLA VOLTS HZ PH
COMPRESSOR COOLING FAN FLA VOLTS HZ PH
MAXIMUM EVAPORATOR TEMPERATURE °F

REFRIGERANT - TOTAL CHARGE LBS.

MINIMUM CIRCUIT AMPACITY VOLTS AMPS

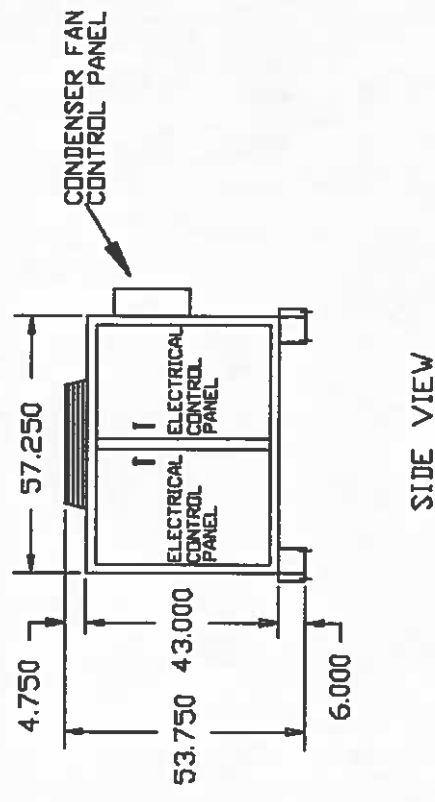
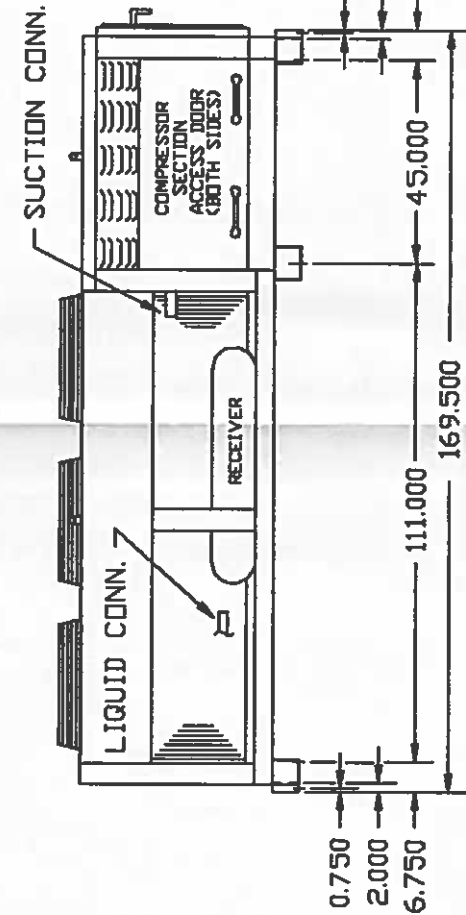
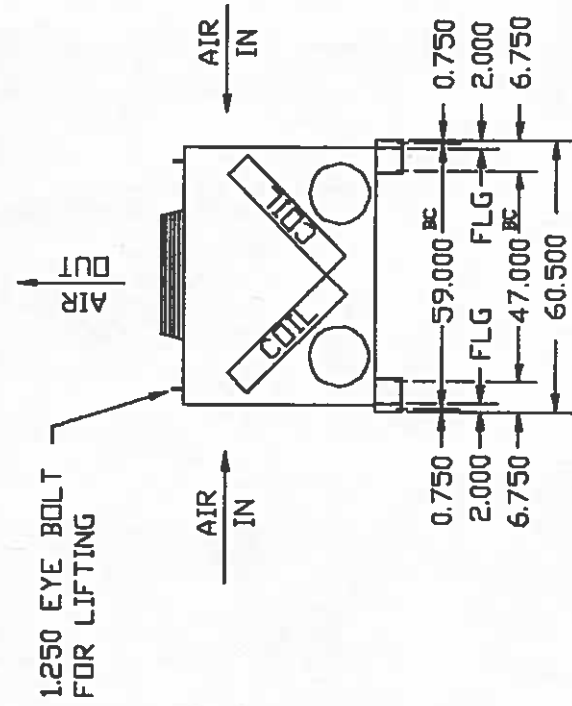
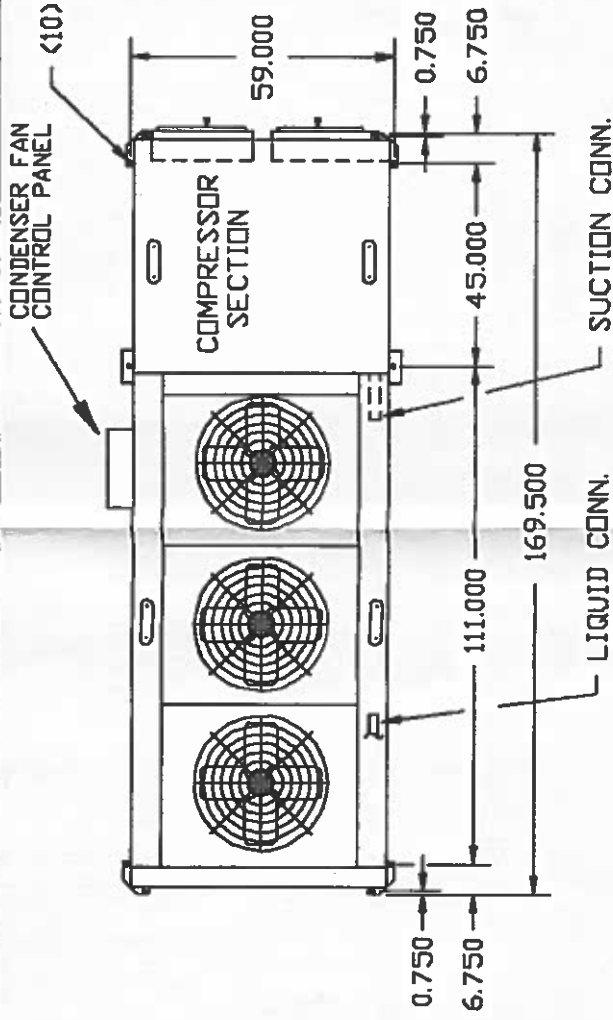
MAXIMUM OVERCURRENT PROTECTIVE DEVICE VOLTS AMPS

REMOTE CONDENSER MINIMUM DESIGN

PRESSURE HIGH SIDE PSIG LOW SIDE PSIG MFG

5485-K

(10) 0.750 ϕ MOUNTING HOLES



FRONT VIEW

SIDE VIEW

SIDE VIEW

CONSTRUCTION:

- FRAME: PAINTED ANGLE IRON
- HOUSING: GALVANIZED STEEL
- COIL: COPPER TUBE, ALUMINUM FINS
- FAN GUARDS: COATED WIRE

FURNISHED ITEMS:

- SUCTION ACCUMULATOR
- SIGHT GLASS
- FILTER DRIER
- WINTER CONTROL
- COMPOUND COOLING

JOB NO.:	430417-01	NO.	CHANGE DESCRIPTION	DATE	CK'D
CUSTOMER	6023	REVISIONS			
P.O.:					
CUSTOMER NAME:	MILWARD REFRIGERATION				
JOB NAME:					

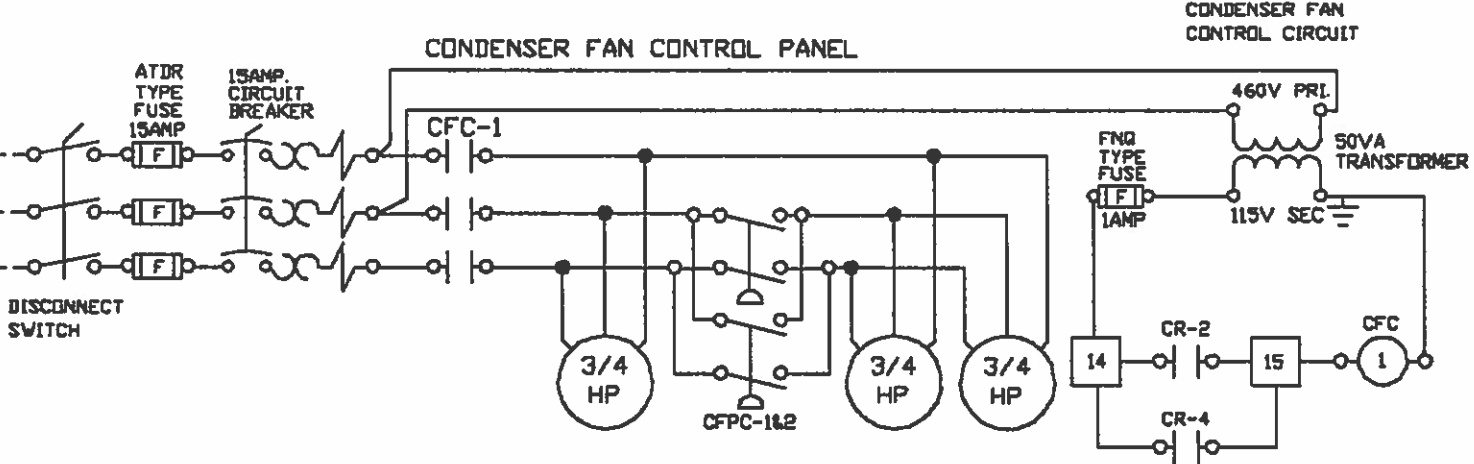
TAG UNIT:	FREEZER				
MODEL:	KPDS36-25-25LC2				
ITEM NO.:	D4430417-01				
NO. REQS:	2	DATE:	11-10-1992	DRAWN:	JCM
SHEET	1	OF	2		
TOLERANCE:	± 0.500				

KRACK CORP.

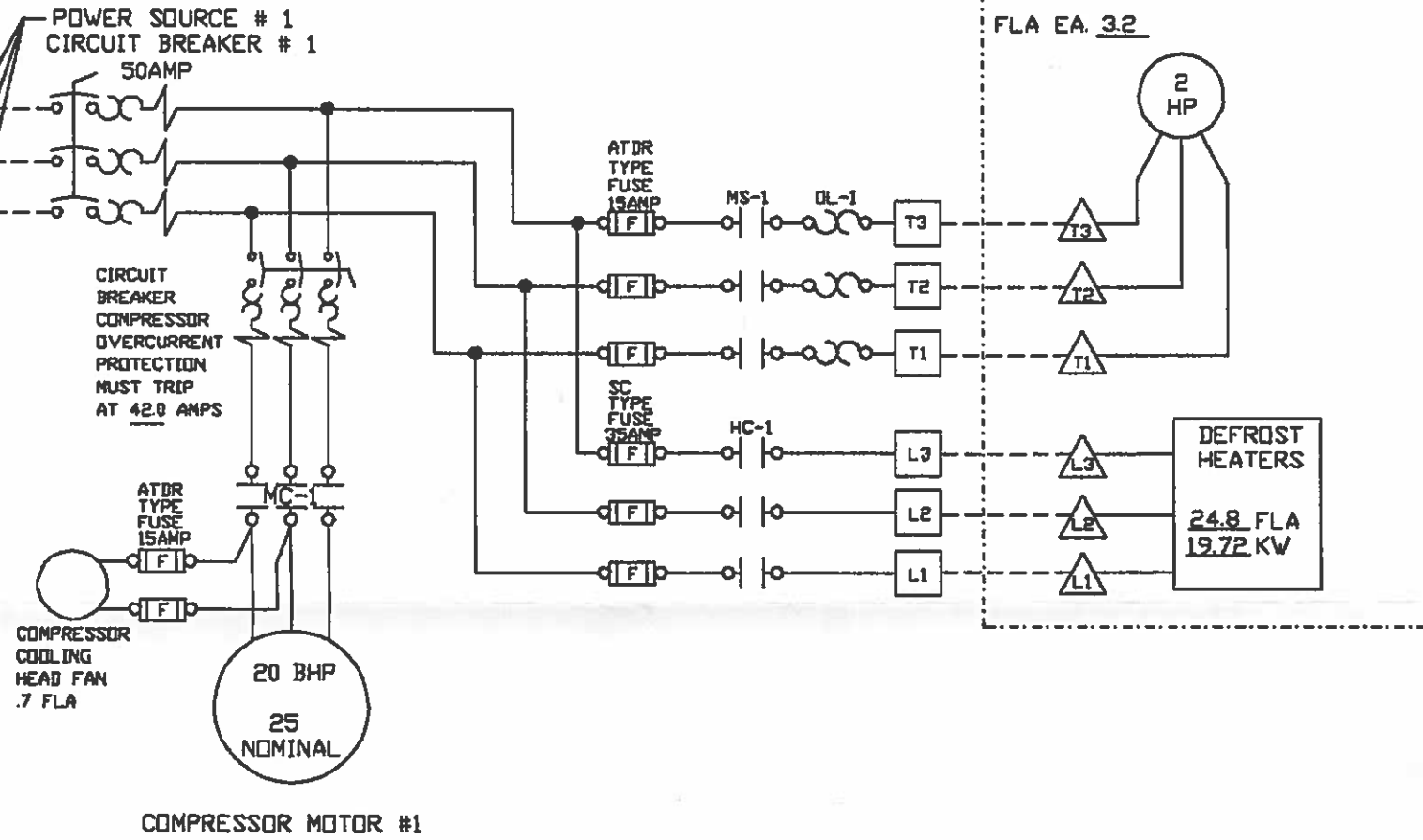
MODEL	FINS/INCH	ROWS DEEP	CONDENSER FAN MOTORS			REFRIGERANT	TEMPERATURE		EACH SYSTEM		WEIGHT LBS TOTAL			
			QTY	H.P.	R.P.M. 60HZ		VOLTAGE	FULL LOAD AMPS. EACH	AMBIENT	SUCTION		BTU/HR	CONNECTION	SUCTION LIQUID ODS
KPDS36-25/25LC2	8	6	3	3/4	850	460/3/60	1.6	R-22	95°F	-24°F	82808	2.625	0.875	4100

CAUTION: THIS UNIT MUST BE SUPPLIED FROM A 277/480V 3PHASE POWER SUPPLY

POWER 460/60/3
 L1 L2 L3 GROUND LUG CONDENSING UNIT POWER WIRING

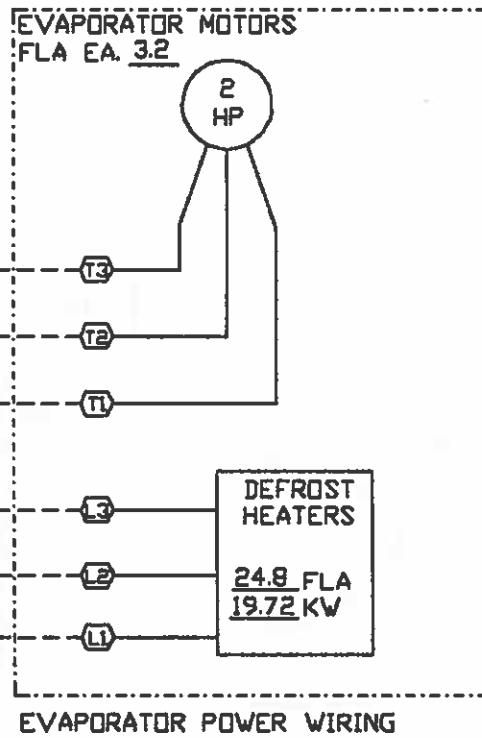


◇ EVAPORATOR COOLING UNIT # 1 SYSTEM # 1



ALL MOTORS THERMALLY PROTECTED AND PROTECTED UNDER PRIMARY SINGLE PHASING

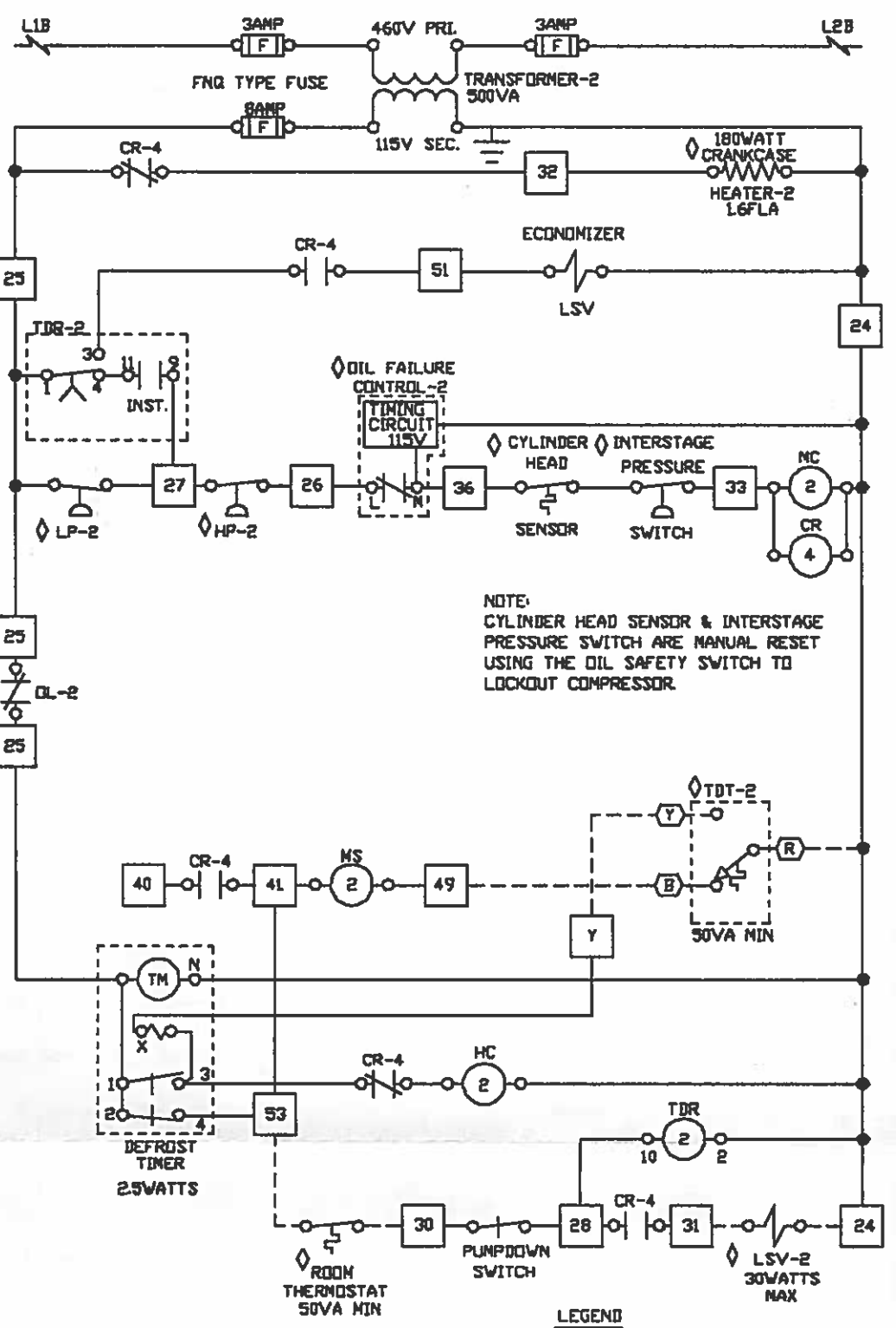
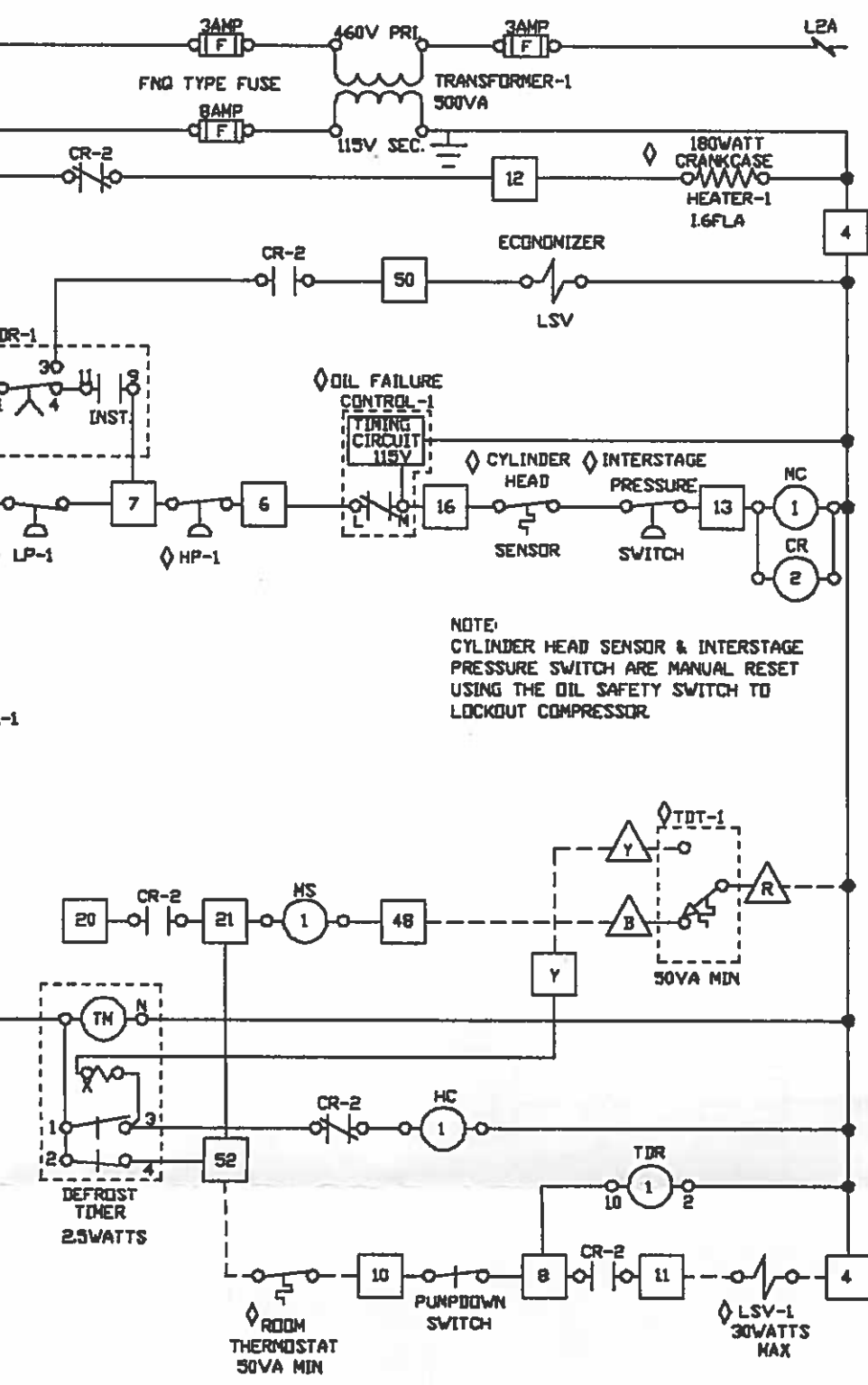
EVAPORATOR COOLING UNIT # 2 SYSTEM # 2



EVAPORATOR POWER WIRING

CONTROL WIRING DIAGRAM SYSTEM # 1

CONTROL WIRING DIAGRAM SYSTEM # 2



NOTE: CYLINDER HEAD SENSOR & INTERSTAGE PRESSURE SWITCH ARE MANUAL RESET USING THE OIL SAFETY SWITCH TO LOCKOUT COMPRESSOR.

NOTE: CYLINDER HEAD SENSOR & INTERSTAGE PRESSURE SWITCH ARE MANUAL RESET USING THE OIL SAFETY SWITCH TO LOCKOUT COMPRESSOR.

-1

IMPORTANT NOTES:

- 1 - WIRE SYSTEM LIQUID SOLENOID VALVE AS SHOWN IN ORDER THAT IT WILL BE DE-ENERGIZED IN THE EVENT THE EVAPORATOR FANS ARE OFF OR THE COMPRESSOR IS OFF ON ANY ONE OF ITS SAFETY PROTECTIVE DEVICES.
- 2 - EVAPORATOR FANS WIRED TO RUN CONTINUOUSLY EXCEPT DURING DEFROST. TO HAVE EVAPORATOR FANS CYCLE WITH CONDENSING UNIT MOVE JUMPER BETWEEN 21 & 32 TO 20 & 32 AND 41 & 53 TO 40 & 53

- LEGEND
- CR - CONTROL RELAY
 - CFC - CONDENSER FAN MOTOR CONTACTOR
 - MC - MOTOR CONTACTOR
 - TDR - TIME DELAY RELAY
 - MS - MOTOR STARTER CONTACTOR
 - LSV - LIQUID SOLENOID VALVE
 - HC - HEATER CONTACTOR
 - HP - HIGH PRESSURE SWITCH
 - LP - LOW PRESSURE SWITCH
 - TDT - DEFROST TERMINATION & FAN DELAY THERMOSTAT
 - X - WIRE SPLICE
 - ◇ - NOT IN CONTROL PANEL
 - - TERMINAL IN CONDENSOR UNIT CONTROL PANEL
 - △ - TERMINAL IN EVAPORATOR JUNCTION BOX SYSTEM # 1
 - - TERMINAL IN EVAPORATOR JUNCTION BOX SYSTEM # 2
 - WIRING BY OTHERS
 - ⊞ - ITEMS FURNISHED BY OTHERS
 - CFCPC - CONDENSER FAN PRESSURE CONTROL

460/60/3 POWER WIRING CONDENSING UNIT					
CIRCUIT BREAKER	COMPRESSOR MOTOR		CONDENSER FANS (TOTAL)		ELECT. PANEL MODEL NO.
FLA	FLA	LRA	FLA	LRA	
35.0	30	173	4.8	28.8	F450/F450A

JOB NO.:	430417-02-03			
CUSTOMER P.O.:	6023			
CUSTOMER NAME:	MILWARD REFRIGERATION			
JOB NAME:				
TAG UNIT:	FREEZER			
MODEL:	KPDS36-25-25LC2&(2)PCC1L-218-3-2-EDL			
ITEM NO.:	DF 4430417-02-03			
NO. REQ'D:	2	DATE:	11-10-92	DRAWN:
SHEET:	2 OF 2			JCM
TOLERANCE:	± 0.500			
KRACK CORP.				REV. 1