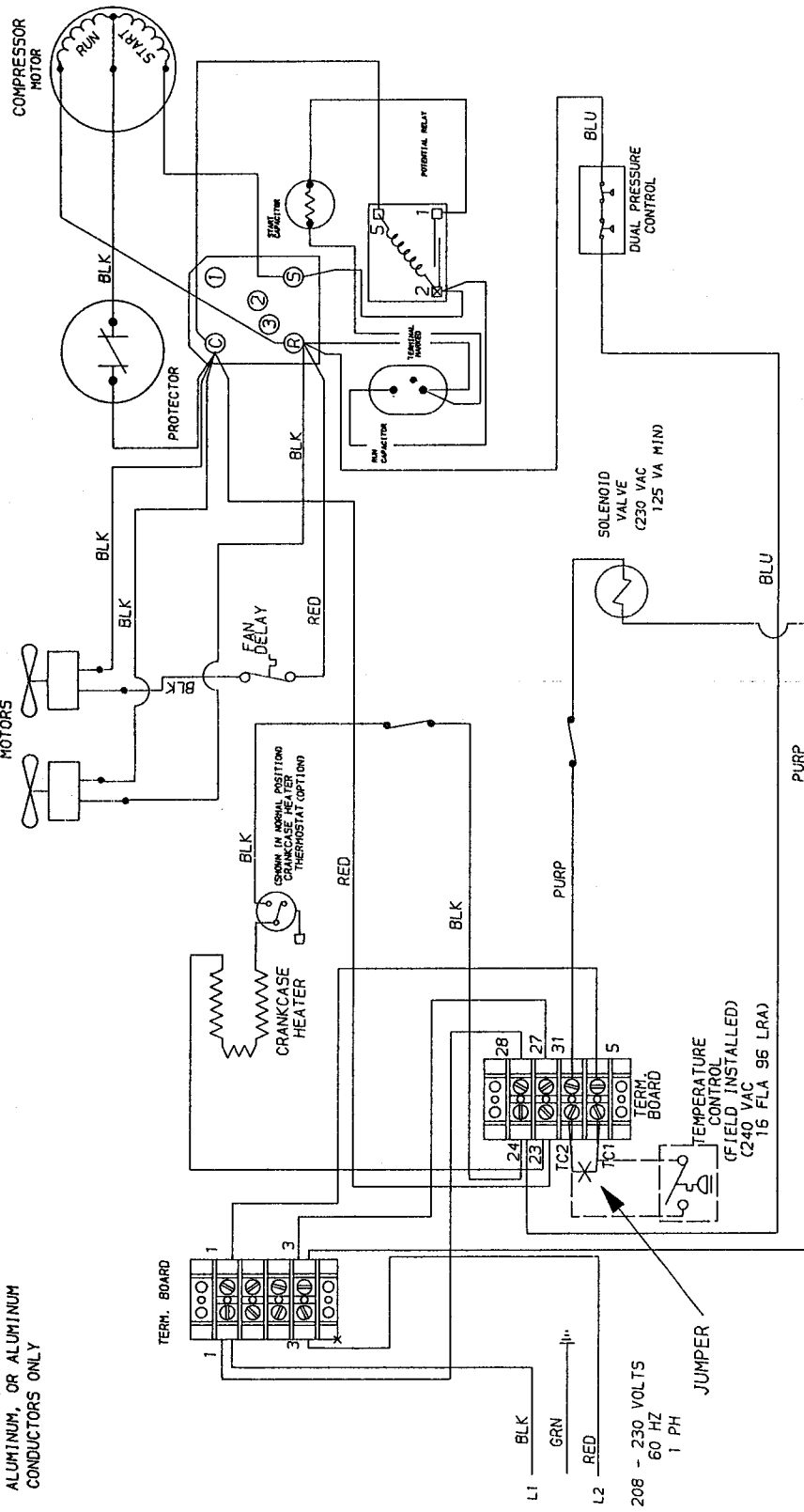


USE H.A.C.R. TYPE BREAKER

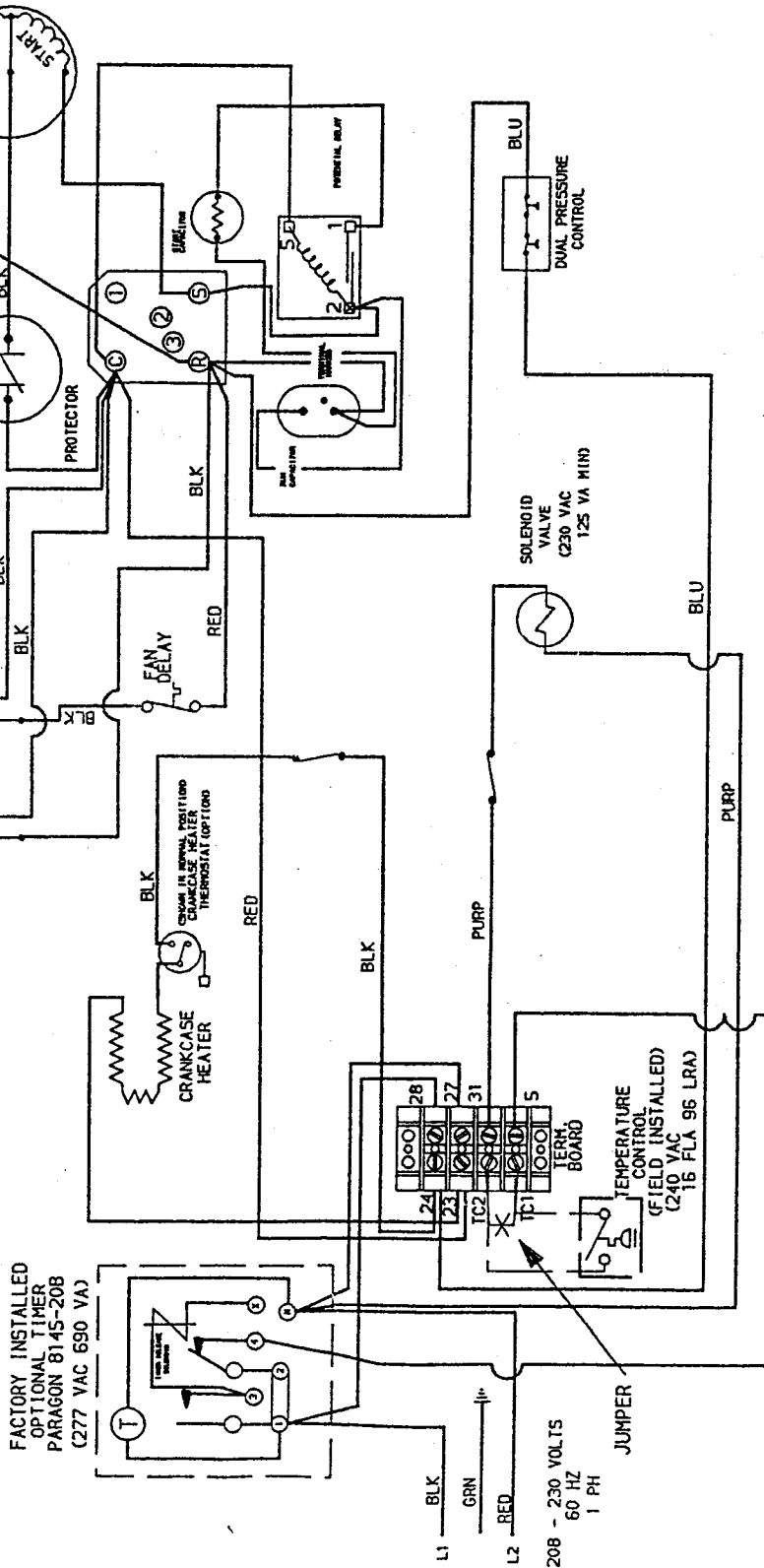
NOTE:
USE COPPER, COPPER CLAD
ALUMINUM, OR ALUMINUM
CONDUCTORS ONLY



<p>NOTE: REMOVE JUMPER FROM TERM. BOARD WHEN TEMP. CONT. IS USED</p>		<p>MODEL LPM01002FP</p>	
<p>WIRING LEGEND</p> <p>FACTORY WIRING —</p> <p>FIELD WIRING —</p>	<p>WIRING DIAGRAM</p> <p>TITLE</p>	<p>XXXXXXXXXX</p> <p>XXXXXXXXXX</p> <p>XXXXXXXXXX</p> <p>XXXXXXXXXX</p>	<p>XXXXXXXXXX</p> <p>XXXXXXXXXX</p> <p>XXXXXXXXXX</p> <p>XXXXXXXXXX</p>
<p>WIRING DIAGRAM</p> <p>TYPE CODE X</p> <p>DATE 06/69</p> <p>DWG. NUMBER M100-1700</p> <p>REV. X</p>		<p>HUSSEMAN</p> <p>6 LOWMEVILLE, N.Y. 12078</p>	<p>XXXXXXXXXX</p> <p>XXXXXXXXXX</p> <p>XXXXXXXXXX</p> <p>XXXXXXXXXX</p>

USE H.A.C.R TYPE BREAKER

NOTE:
USE COPPER, COPPER CLAD
ALUMINUM, OR ALUMINUM
CONDUCTORS ONLY



HUSSELMANN
Glenview, Ill., N.Y. 12070

WIRING DIAGRAM

REV. DATE SPEC'D BY XXX

TYPE CODE X

DWG. NUMBER M100-1691

REV. REV. X

FINISH XXXXXXXXXXXXX

DIE NO. XXXX-XXXX

E.C.N. XXXX

DATE

BY

SIZE XXXXXXXXXXXXX

XXXXXX-XX

MATERIAL

SHEET SIZE B

UNLESS OTHERWISE SPECIFIED:
FRACTIONAL & 1/32"
DECIMAL & 0.031"
ANGULAR & 1°
WELD LOCATION 1/8" 1/8"

SCALE:

NOTE:
REMOVE JUMPER FROM
TERM. BOARD WHEN
TEMP. CONT. IS USED

MODEL LPM01002FP

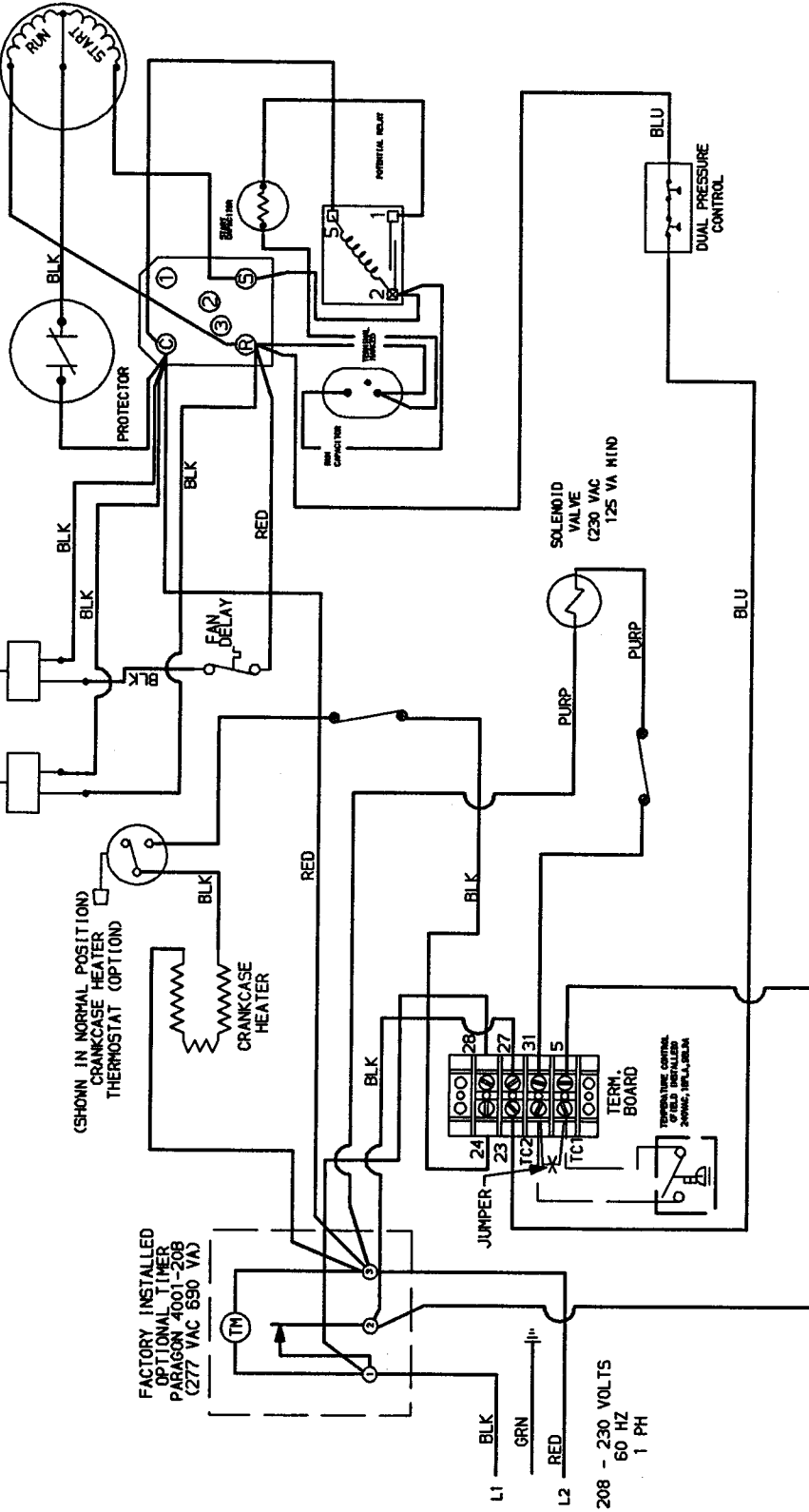
WIRING LEGEND

FACTORY WIRING ———

FIELD WIRING ———

USE H.A.C.R. TYPE BREAKER

NOTE: USE COPPER, COPPER CLAD ALUMINUM, OR ALUMINUM CONDUCTORS ONLY



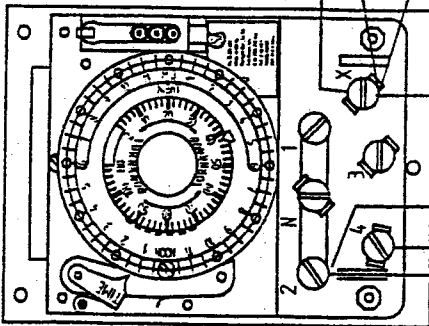
NOTE: REMOVE JUMPER FROM TERMINAL BOARD WHEN TEMP. CONT. IS USED

WIRING LEGEND

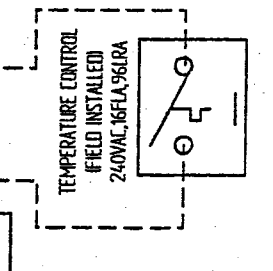
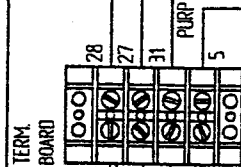
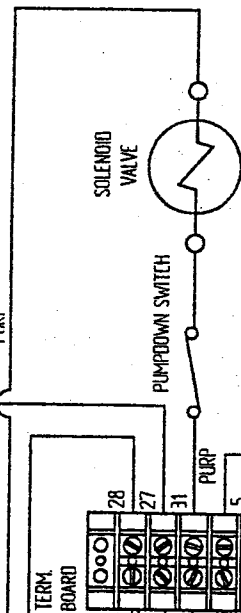
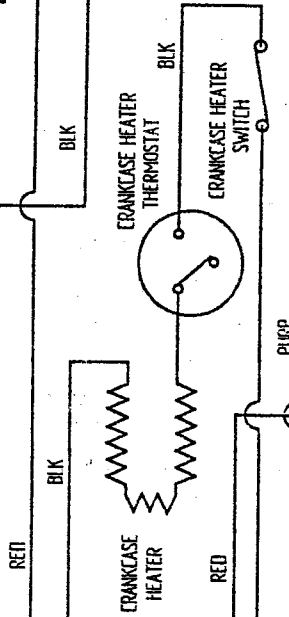
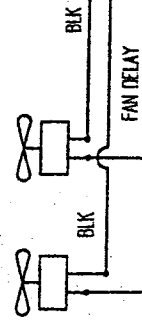
FACTORY WIRING	—
FIELD WIRING	—

<p>HUSSELMANN</p> <p>Glenview, Ill., U.S.A. 60045</p>	<p>TITLE</p> <p>WIRING DIAGRAM</p>	<p>DESIGN</p> <p>S.S. 12-87</p>	<p>DWG. NUMBER</p> <p>M100-1693</p>	<p>REV.</p>
<p>TO ORDER USE THE FOLLOWING SPECIFICATIONS:</p> <p>FUNCTIONAL: 1/2"Ø</p> <p>EXTERNAL: 1/4"Ø</p> <p>INTERNAL: 1/8"Ø</p> <p>ANGLE: 1"Ø</p> <p>SOLENOID VALVE: 1/2"Ø</p> <p>SCALE: NONE</p> <p>USE:</p>	<p>SHEET SIZE</p> <p>B</p>	<p>MATERIAL:</p>	<p>FINISH:</p>	<p>MODEL</p> <p>LPM01002FP</p>
<p>REV.</p>	<p>DATE</p>	<p>BY</p>	<p>E.C.N.</p>	

PARAGON 8045-208
208-240 V.
60 HZ, 1 Ph



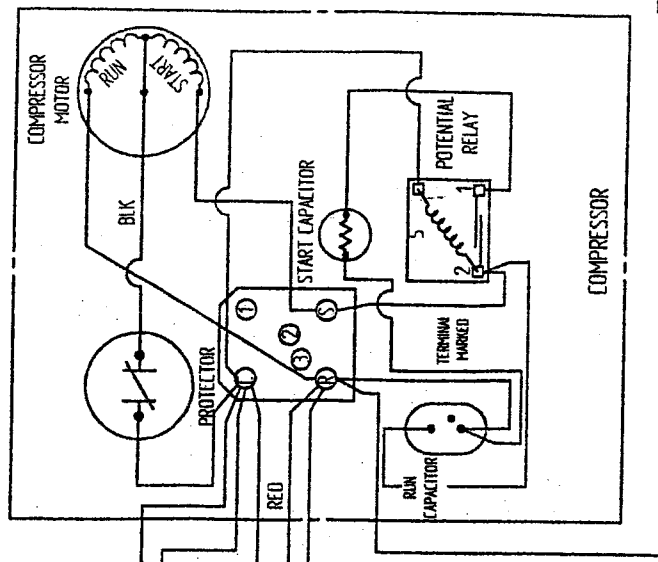
CONDENSER FANS



208-230V
60 HZ
1 Ph

BLK
RED
GRN

NOTE: REMOVE JUMPER WHEN
TEMP. CONT. IS USED



DUAL PRESS.
CONTROL



USE HACR TYPE BREAKER

NOTE: USE COPPER COPPER CLAD,
OR ALUMINUM CONDUCTORS ONLY

FACTORY WIRING
FIELD WIRING

- LPH00752VP LPM00772MP
- LPH01002VP LPM01002VP
- LPH01252VP LPM00522JP
- LPH01502VP LPM00752JP

REV'D #	REV DATE	REV BY	REASON
A	7/15/99	JFB	REPLACED ORIGINAL 1" HOLE LOCATION & SPACING
APPROVED BY			
REV A - LABELLED COMPRESSOR WIRING			
DESIGNED BY	5004	CHK'D BY	
DRAWN BY		SCALE	
FILE NUMBER		DATE	
APPROVED BY		REV'D #	

HUSSMANN
GLOWERSVILLE, NY 12078

WIRING DIAGRAM

M100-1805 A