

SC SERIES

Bulletin: SC-876
Supersedes: SC-474

KRACK

SC Series Semi-Circular Unit Coolers



For + 34°F and above walk-in coolers
UL Listed — NSF Approved

Selection. Eight models in the Krack SC Series provide a range of capacities from 4800 to 24,000 BTUH/10°TD. Air flow range is 720 to 3600 CFM.

Coils are constructed of copper tubing with aluminum fins. Tubes are staggered in the direction of air flow for maximum rates of air turbulence and high rates of heat transfer.

Frost Prevention Feature. Coil circuiting is based on the counter-flow principle and coil is designed to pick up superheat in the bottom row of tubes to prevent frost-up at the bottom of the coil.

Low Velocity Air discharges horizontally in a 180° arc from the unit which can be placed close to the wall to permit more product storage.

Cabinets and Drain Pans. Unit panels, including hinged drain pan are constructed of aluminum. Double wall constructed drain pan retards sweating.

Aluminum Fans are designed for slow speed operation and high capacity.

Motors for SC-360 thru SC-1075 are open type for 115 or 230 volt, single phase, 50 or 60 Hertz.

Motors for SC-1400 and SC-1800 are totally enclosed for 115 or 230/1/60. Fifty Hertz is available at additional cost, longer delivery time. All motors have built-in thermal overload protection.

Cleanable Electrostatic Air Filters are standard and their use promotes cleaner coil operation.

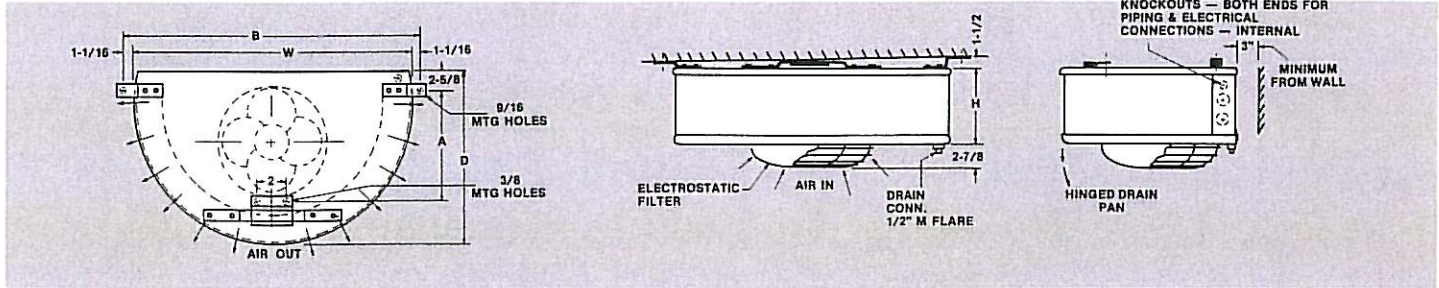
Suction Liquid Heat Exchangers are available as accessory item. Shipped loose.

CERTIFIED CAPACITY RATINGS

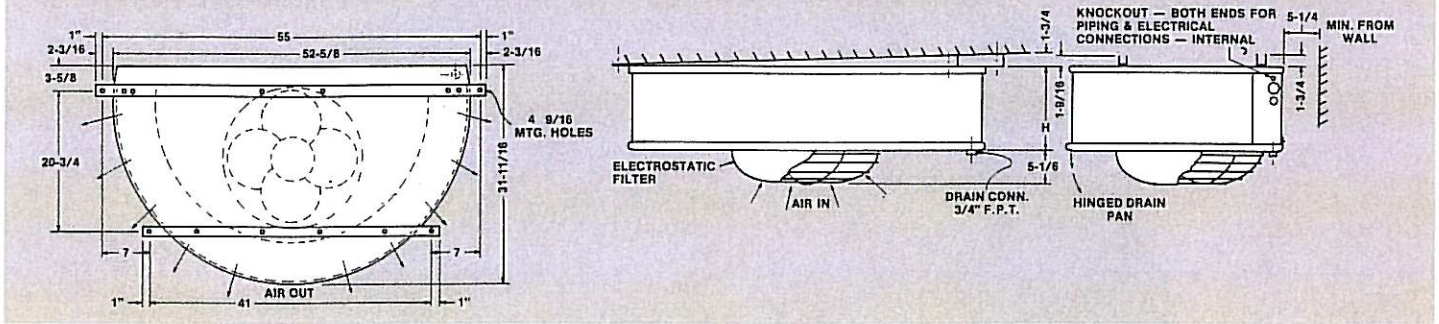


SPECIFICATIONS

MODELS SC-360 to SC-1075



MODELS SC-1400 and 1800



MODEL	CAPACITY		AIR DATA		REFRIG. CHARGE LBS.	MOTOR DATA			RELATIVE SOUND LEVELS
	BTU/HR 10° TD	CFM	THROW FEET	HP		115/60/1 FLA	RPM		
SC-360	4,800	720	12	3.2	1/20	1.6	1550	60	
SC-450	6,000	880	15	4.1	1/20	1.6	1550	60	
SC-550	7,350	1090	18	4.9	1/10	2.7	1550	61	
SC-685	9,150	1310	20	5.7	1/10	2.7	1550	61	
SC-875	11,750	1710	25	7.7	1/6	4.9	1050	61	
SC-1075	14,350	2115	30	10.2	1/6	4.9	1050	62	
SC-1400	18,700	3350	30	12.2	1/4	5.0	1150	62.5	
SC-1800	24,000	3600	30	15.6	1/2	7.8	1150	63	

MODEL	DIMENSIONS (IN.)					CONNECTION SIZES (IN.)			SHIPPING WT. (LBS.) APPROX.
	H	W	D	A	B	LIQUID F.F.L.	SUCTION O.D.S.	EQUALIZER M.F.L.	
SC-360	6 ⁵ / ₈	38 ³ / ₈	23 ¹ / ₂	14 ³ / ₄	40 ¹ / ₄	1/2	5/8	—	64
SC-450	8	38 ³ / ₈	23 ¹ / ₂	14 ³ / ₄	40 ¹ / ₄	1/2	5/8	—	70
SC-550	9 ³ / ₈	38 ³ / ₈	23 ¹ / ₂	14 ³ / ₄	40 ¹ / ₄	1/2*	3/4	1/4	76
SC-685	10 ³ / ₄	38 ³ / ₈	23 ¹ / ₂	14 ³ / ₄	40 ¹ / ₄	1/2*	3/4	1/4	80
SC-875	9 ³ / ₈	46 ³ / ₈	27 ⁵ / ₈	19 ¹ / ₄	48 ¹ / ₂	1/2*	3/4	1/4	105
SC-1075	12 ¹ / ₈	46 ³ / ₈	27 ⁵ / ₈	19 ¹ / ₄	48 ¹ / ₂	1/2*	3/4	1/4	142
SC-1400	12 ¹ / ₈	52 ⁵ / ₈	31 ¹¹ / ₁₆	—	—	1/2*	1 ¹ / ₈	1/4	187
SC-1800	14 ¹ / ₈	52 ⁵ / ₈	31 ¹¹ / ₁₆	—	—	1/2*	1 ¹ / ₈	1/4	210

1) The capacity ratings were selected to correspond with competitive equipment of similar design. Those persons accustomed to using "Krack Certified Rating" should apply a .75 factor to get actual capacities as obtained by using ASHRAE 25 test procedures.

2) DERATE ABOVE RATINGS BY 12% FOR 50 HERTZ.

3) These relative sound level values represent the sound that may be expected at a distance of 6 ft. from the unit in a room having a combination of hard and soft surfaces. The actual sound reading is dependent upon the installation and type of room.

*Multi-outlet, pressure-type refrigerant distributor. Externally equalized thermostatic expansion valve required.

We reserve the right to change or revise specifications and product design in connection with any feature of our products. Such changes do not entitle the buyer to corresponding changes, improvements, additions or replacements for equipment previously sold or shipped.



Krack Corporation

401 S. Rohlwing Road (Route 53) • Addison, Illinois 60101
Phone: (312) 629-7500 • Telex: 72-1435 • Cable: KRACKOIL